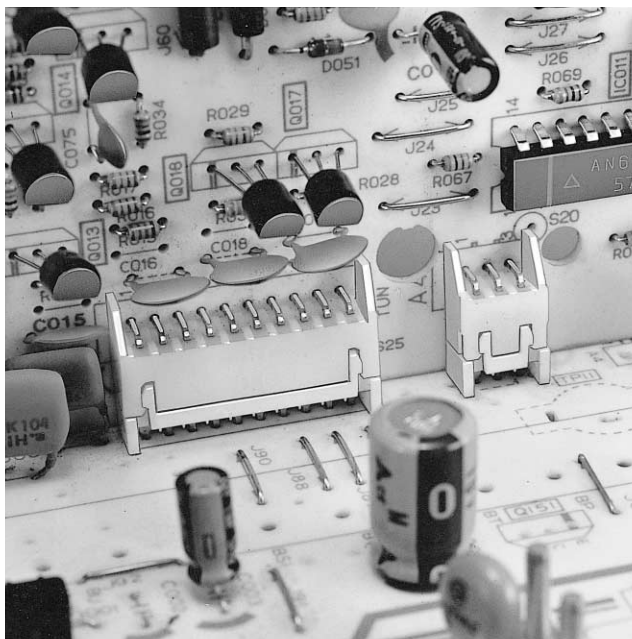
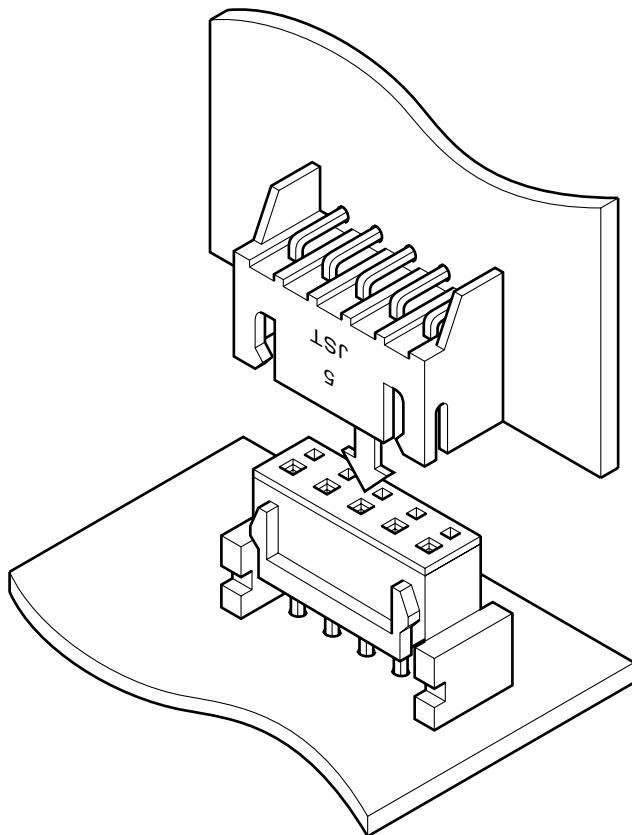


**JST**

# JQ CONNECTOR

*Board-to-board connectors***2.5mm  
(.098") pitch**

***This 2.5mm (.098") pitch connector is used to interconnect printed circuit boards. It easily resists distortion during mating, thus ensuring reliable contact, even under adverse conditions.***



## Features

### • **High contact pressure**

This vibration-resistant, double-beam contact provides high contact pressure and thus eliminates contact bounce during vibration or shock.

### • **Box-shaped shroud**

The four-sided shrouded header prevents the socket housing from being misinserted or distorted during mating. The slots in the header's shroud fit snugly into the receptacle housing, guaranteeing a vibration-proof coupling. And the serrated square posts are pressure-fit to prevent flux from entering during soldering.

### • **Secure locking on printed circuit boards**

The solder tails of both the plug and receptacle have board retention features. This ensures secure mounting and accurate location during soldering.

### • **Vertical, horizontal and parallel mounting**

Both top-entry and side-entry receptacles and shrouded headers are available, thus allowing printed circuit boards to be connected vertically, horizontally or parallel to the mother board.

### • **Interchangeability**

The shrouded header is interchangeable with the XH wire-to-board crimp style connectors, the NR and NRD wire-to-board insulation displacement connectors.


## Specifications

- Current rating: 3A AC, DC
- Voltage rating: 250V AC, DC
- Temperature range: -25°C to +85°C  
(including temperature rise in applying electrical current)
- Contact resistance: Initial value/10m Ω max.  
After environmental testing/20m Ω max.
- Insulation resistance: 1,000M Ω min.
- Withstanding voltage: 1,000V AC/minute
- Applicable PC board thickness: 1.6mm(.063")
- \* Contact JST if Lead-Free product is required.
- \* Refer to "General Instruction and Notice when using Terminals and Connectors" at the end of this catalog.
- \* Contact JST for details.

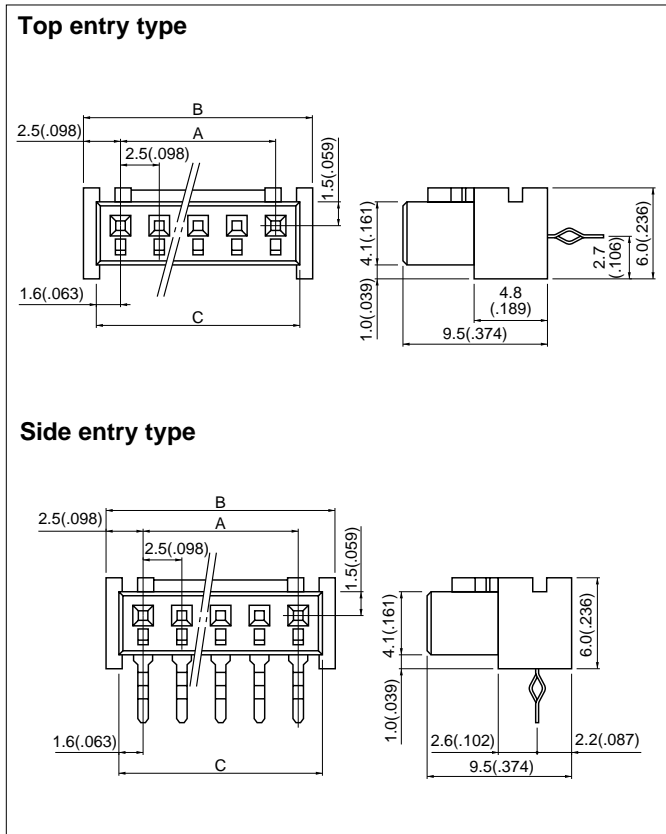
## Standards

 Recognized E60389

 Certified LR20812

 R75085

## Receptacle



Cir- cuits	Model No.		Dimensions mm(in.)			Q'ty / box	
	Top entry type	Side entry type	A	B	C	Top entry type	Side entry type
3	<b>03JQ-BT</b>	<b>03JQ-ST</b>	5.0( .197)	10.0( .394)	8.2( .323)	500	500
4	<b>04JQ-BT</b>	<b>04JQ-ST</b>	7.5( .295)	12.5( .492)	10.7( .421)	500	500
5	<b>05JQ-BT</b>	<b>05JQ-ST</b>	10.0( .394)	15.0( .591)	13.2( .520)	500	500
6	<b>06JQ-BT</b>	<b>06JQ-ST</b>	12.5( .492)	17.5( .689)	15.7( .618)	500	500
7	<b>07JQ-BT</b>	<b>07JQ-ST</b>	15.0( .591)	20.0( .787)	18.2( .717)	250	250
8	<b>08JQ-BT</b>	<b>08JQ-ST</b>	17.5( .689)	22.5( .886)	20.7( .815)	200	250
9	<b>09JQ-BT</b>	<b>09JQ-ST</b>	20.0( .787)	25.0( .984)	23.2( .913)	200	250
10	<b>10JQ-BT</b>	<b>10JQ-ST</b>	22.5( .886)	27.5(1.083)	25.7(1.012)	250	250
11	<b>11JQ-BT</b>	<b>11JQ-ST</b>	25.0( .984)	30.0(1.181)	28.2(1.110)	250	250
12	<b>12JQ-BT</b>	<b>12JQ-ST</b>	27.5(1.083)	32.5(1.280)	30.7(1.209)	200	200
13	<b>13JQ-BT</b>	<b>13JQ-ST</b>	30.0(1.181)	35.0(1.378)	33.2(1.307)	200	200
15	<b>15JQ-BT</b>	<b>15JQ-ST</b>	35.0(1.378)	40.0(1.575)	38.2(1.504)	100	100

### Material and Finish

Contact: Phosphor bronze, tin-plated  
Housing: Nylon 66, UL94V-0, natural

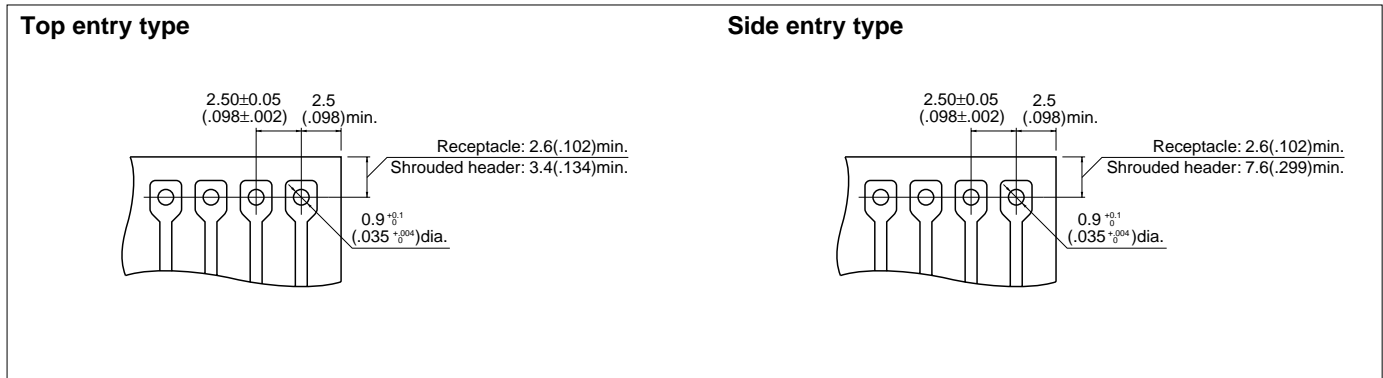
Note: 13JQ-BT, 13JQ-ST, 15JQ-BT & 15JQ-ST are not TÜV approved.

## Shrouded header

The through-hole type shrouded headers are interchangeable with the XH crimp style connectors, the NR and NRD insulation displacement connectors.

# JQ CONNECTOR

## PC board layout (viewed from soldering side)



Note:  
 1. Tolerances are non-cumulative:  $\pm 0.05\text{mm} (\pm .002")$  for all centers.  
 2. Hole dimensions differ according to the kind of PC board and piercing method. The dimensions above should serve as a guideline.  
 Contact JST for details.

## Assembly layout

		Receptacle	
		Top entry type	Side entry type
Shrouded header	Top entry type B( )B-XH-A		
	Side entry type S( )B-XH-A-1		