

# CMKS-L DIES CONSTRUCTION SHEET

# JST

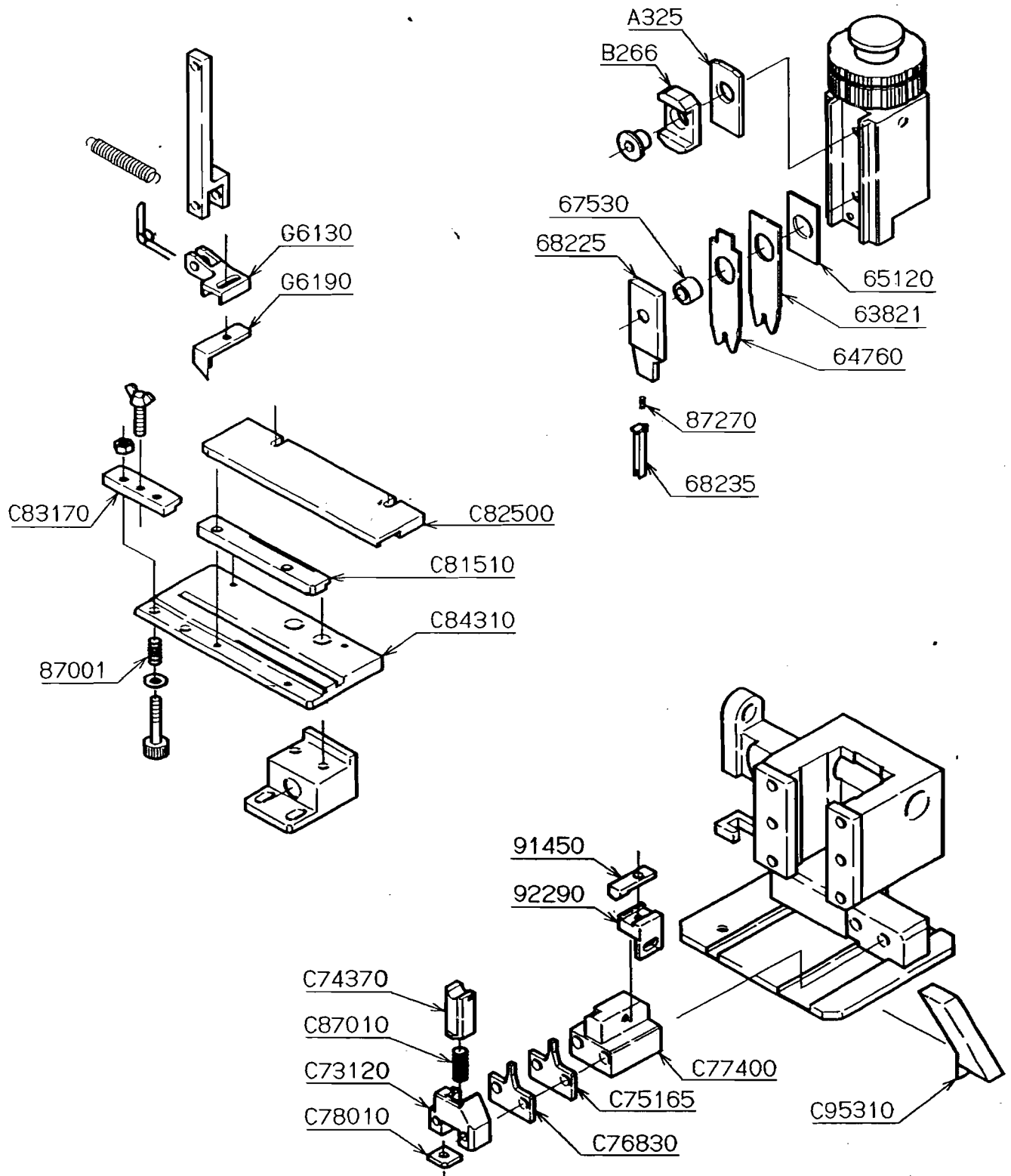
Terminal/Contact Model No.	SEH-001T-P0.6		Die set Model No.	SEH-001-06		
			Applicator Model No.	CMKS-L		
			Crimp shape (wire)	N-1.4		
			Crimp shape (ins)	N-1.8		
Clearance between Crimper (B) and Shear blade					0.1	
Description		No.	Description		No.	
Crimper (A)		63821	Crimper anvil (A)		C75165	
Crimper (B)		64760	Crimper anvil (B)		C76830	
Spacer (A)		65120				
Spacer (B)						
Spacer (C)						
Punch		68225	Spacer		C77400	
Die holder		67530	Shear blade		C74370	
Spring			Shear blade supporter		C73120	
Wire block		A325	Shear blade base		C78010	
Insulation block		B266	Shear blade spring		C87010	
Wire hold punch		68235	Feed finger		G6190	
Wire hold punch spring		87270	Feed finger holder		G6130	
Guide plate (L)		C81510	Stripper		91450	
Guide plate (R)		C82500	Stripper bracket		92290	
Feed plate		C84310	Stripper pin			
Pressure plate		C83170				
Pressure spring(2pcs)		87001	Scrap cover		C95310	
Wire and Crimp height				Remarks		
Wire		Crimp height (mm)				
Type	Size	Wire	Ins			
UL1007	#30	0.57~0.62	1.4			
UL1007	#28	0.60~0.65	1.5			
UL1007	#26	0.65±0.05	1.5			
UL1007	#24	0.70±0.05	1.6			
UL1007	#22	0.75±0.05	1.7			
		Prepared by	H. Fujii		Issue date	Oct 01, 1996



Side-Feeding Applicator  
CMKS-L  
Die Set Assembly.

Applicable  
terminal/  
contact

SEH-001-06



Date	Drawn by
------	----------