

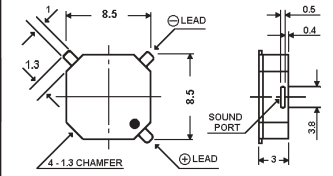
Electro Acoustic Transducers

Surface Mount Electro-Acoustic Transducers

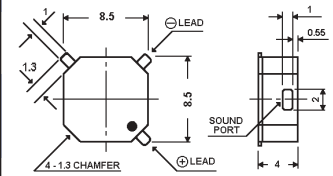
Part Number	Rated Voltage (VDC)	Operating Voltage (VDC)	Max. Current (mA)*	Coil Resistance (Ohms)	SPL Output (dB) @10CM (Min.)*	Resonant Frequency (Hz)*	Operating Temperature
BST0803SM-03	3.6	2.5 - 4.5	100	16 ± 3	85dB min (typ 91)	2730Hz	-30° to +70°C
BST0803SM-05	5	4 - 6	90	32 ± 3	85dB min (typ 91)	2730Hz	-30° to +70°C
BST0803SM-03-4T	3.6	2.5 - 4.5	100	16 ± 3	85dB min (typ 91)	2730Hz	-30° to +70°C
BST0803SM-05-4T	5	4 - 6	90	32 ± 3	85dB min (typ 91)	2730Hz	-30° to +70°C
BST0804SM-03	3.6	2.5 - 4.5	100	16 ± 3	87dB min (typ 92)	2730Hz	-30° to +70°C
BST0804SM-05	5	4 - 6	90	32 ± 3	87dB min (typ 92)	2730Hz	-30° to +70°C
BST0804SM-03-4T	3.6	2.5 - 4.5	100	16 ± 3	87dB min (typ 92)	2730Hz	-30° to +70°C
BST0804SM-05-4T	5	4 - 6	90	32 ± 3	87dB min (typ 92)	2730Hz	-30° to +70°C
BRT0903SM-01-GW	1.5	1.2 - 1.7	90	6 ± 1	85dB min (typ 90)	2731Hz	-20° to +60°C
BRT0903SM-03-GW	3.6	2.5 - 4.5	90	16 ± 3	87dB min (typ 95)	2731Hz	-20° to +60°C
BRT0903SM-05-GW	5	4 - 6	70	32 ± 5	87dB min (typ 95)	2731Hz	-20° to +60°C
BRT0904SM-01-GW	1.5	1.2 - 1.7	90	6 ± 1	85dB min (typ 90)	2731Hz	-20° to +60°C
BRT0904SM-03-GW	3.6	2.5 - 4.5	100	16 ± 3	87dB min (typ 95)	2731Hz	-20° to +60°C
BRT0904SM-05-GW	5	4 - 6	70	32 ± 5	87dB min (typ 95)	2731Hz	-20° to +60°C
BST0904SM-03-4T	3.6	2.5 - 4.5	100	16 ± 3	85dB min (typ 95)	2670Hz	-30° to +70°C
BST0905SM-03	3.6	2.5 - 4.5	100	16 ± 3	85dB min (typ 95)	2670Hz	-30° to +70°C
BST1003SM-03A	3.6	2 - 4.5	90	16 ± 3	85dB min (typ 91)	2700Hz	-20° to +60°C
BST1003SM-03B	3.6	2 - 4.5	90	16 ± 3	85dB min (typ 91)	3000Hz	-20° to +60°C
BST1206SM-01-GW	1.5	1 - 2	30	15 ± 7.5	70dB min	2048Hz	-40° to +70°C
BST1307SM-01	1.5	1 - 2	40	15 ± 3	85dB min	2400Hz	-20° to +70°C
BST1307SM-05	5	4 - 7	40	45 ± 5	85dB min	2400Hz	-20° to +70°C
BST1307SM-12	12	8 - 16	40	140 ± 14	85dB min	2400Hz	-20° to +70°C
BST1310SM-01	1.5	1 - 2	40	15 ± 3	85dB min	2400Hz	-20° to +70°C
BST1310SM-05	5	4 - 7	40	45 ± 5	85dB min	2400Hz	-20° to +70°C
BST1310SM-12	12	8 - 16	40	140 ± 14	85dB min	2400Hz	-20° to +70°C
BST1310SM-01-C	1.5	1.4 - 3	20	not applicable	75dB min	2400 ± 400Hz	-20° to +70°C
BST1310SM-05-C	5	3 - 7	30	w/built-in circuit	90dB min	2400 ± 300Hz	-20° to +70°C
BST1310SM-12-C	12	8 - 16	30		90dB min	2400 ± 300Hz	-20° to +70°C
BST1403SM-01	1.5	1.2 - 1.7	80	9 ± 2	85dB min (typ 92)	3200Hz	-20° to +70°C
BST1403SM-03	3	3 - 4.5	90	18 ± 2	85dB min (typ 92)	3200Hz	-20° to +70°C
BST1403SM-05	5	4 - 6	70	43 ± 3	85dB min (typ 92)	3200Hz	-20° to +70°C

*Value Applying Resonant Frequency (1/2 Duty, Square Wave)

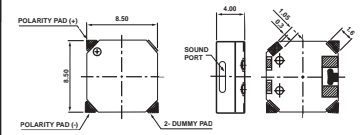
BST0803SM Series



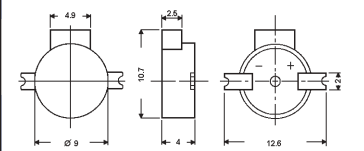
BST0804SM Series



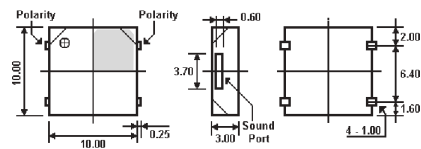
BST0804SM-4T Series



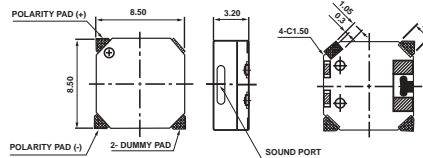
BST0904SM-GW Series



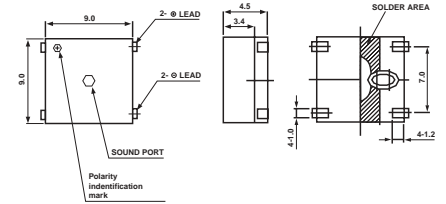
BST1003SM Series



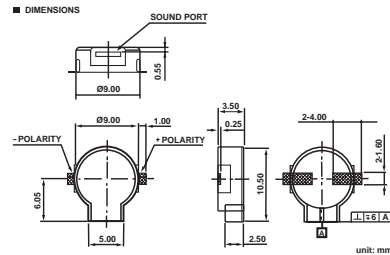
BST0803SM-4T Series



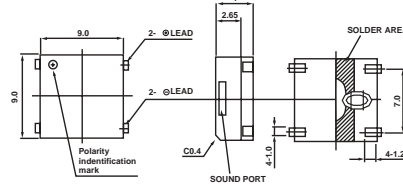
BST0905SM-03 Series



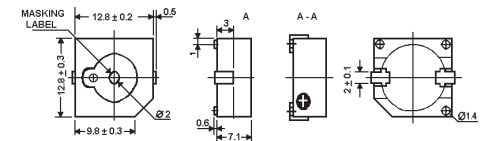
BRT0903SM-GW Series



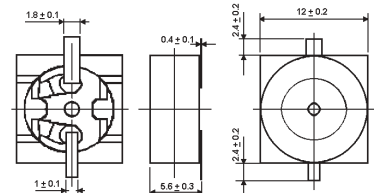
BST0904SM-03-4T Series



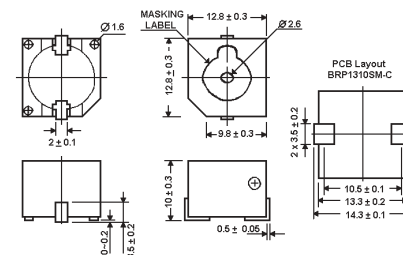
BST1307SM Series



BST1206SM Series



BST1310SM/BST1310SM-C Series



BST1403SM Series

