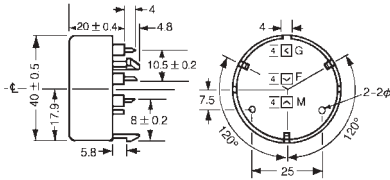


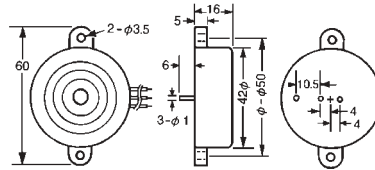
Piezo Buzzers - Self-Drive

Part Number	Resonant Frequency (Hz)	Electrostatic Capacity (pf)	Max Input Voltage	Terminal Type	Operating Temperature	Sound Pressure Level
BRP4016P-30	3200 ± 500Hz	30,000 ± 30%	30Vp-p	3 Pins	-20° to +60°C	95dB @30cm9Vp-p
BRP4216L-30	3000 ± 500Hz	25,000 ± 30%	30Vp-p	3 Leadwires	-20° to +60°C	85dB @1M15Vp-p
BRP4216P-30	3000 ± 500Hz	25,000 ± 30%	30Vp-p	3 Pins	-20° to +60°C	85dB @1M15Vp-p

BRP4016P Series



BRP4216 Series



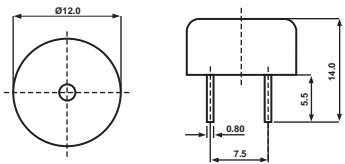
Piezo Electric Alarms

Piezo Electric Alarms with Internal Circuitry

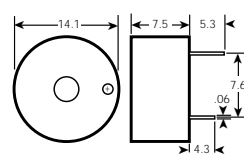
Part Number	Rated Voltage (VDC)	Operating Voltage (VDC)	Max. Current (mA)	Min. Sound Output Level	Terminal Type	Tone Mode Pulse/Second	Frequency	Operating Temperature
BRP1209P-12-C	12	2.5 - 15	8	75dB @ 30cm	2 Pins	Continuous	5000 ± 500Hz	-20° to +70°C
BRP1408P-12-CS*	12	3 - 16	7	80dB @ 30cm	2 Pins	Continuous	4000 ± 500Hz	-40° to +120°C
BRP1514P-05-C	5	1 - 12	15	83dB @ 10cm	2 Pins	Continuous	4000 ± 500Hz	-20° to +60°C
BRP1514P-12-C	12	1 - 18	20	85dB @ 10cm	2 Pins	Continuous	4000 ± 500Hz	-20° to +60°C
BRP2211P-12-C	12	3 - 15	4.5	75dB @ 30cm	2 Pins	Continuous	4000 ± 500Hz	-20° to +70°C
BRP2211P-12-CS	12	3 - 15	4.5	75dB @ 100cm	2 Pins	Continuous	4000 ± 500Hz	-30° to +110°C
BRP2212L-12-C	12	3 - 15	4.5	90dB @ 30cm	2 Leadwires	Continuous	4000 ± 500Hz	-10° to +60°C
BRP2212P-12-C	12	3 - 15	4.5	90dB @ 30cm	2 Pins	Continuous	4000 ± 500Hz	-10° to +60°C
BRP2307L-12-C	12	3 - 24	5	75dB @ 30cm	2 Leadwires	Continuous	4000 ± 500Hz	-20° to +70°C

*Indicates Wave Solderable and Washable

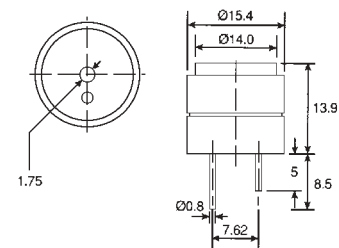
BRP1209P-12-C Series



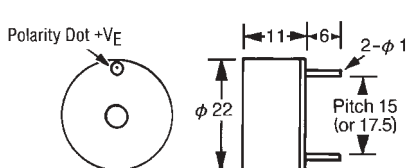
BRP1408P-12-CS Series



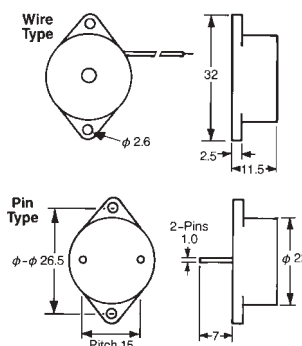
BRP1514P-C Series



BRP2211P-12-C/CS Series



BRP2212L-12-C Series



BRP2307L-12-C Series

