

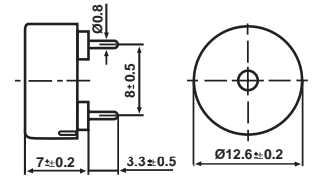
# Piezo Electric Alarms - External Drive

## Piezo Electric Alarms - External Drive

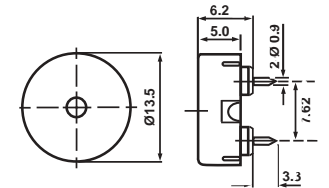
Part Number	Resonant Frequency (Hz)	Electrostatic Capacity (pf)	Max Input Voltage	Terminal Type	Operating Temperature	Sound Pressure Level
BRP1207P-30 BRP1207P-30-TR*	4000 ± 500Hz 4000 ± 500Hz	12,000 ± 30% 12,000 ± 30%	30Vp-p 30Vp-p	2 Pins 2 Pins	-20° to +60°C -20° to +60°C	70dB @10cm 3Vp-p 70dB @10cm 3Vp-p
BRP1305P-25	4000 ± 500Hz	11,000 ± 30%	25Vp-p	2 Pins	-30° to +85°C	80dB @10cm 10Vp-p
BRP1404L-30	4800 ± 500Hz	11,000 ± 30%	30Vp-p	2 Flying Leadwires	-30° to +80°C	85dB @10cm 10Vp-p
BRP1407P-20	4096Hz	10,000 ± 30%	20Vp-p	2 Pins	-20° to +70°C	80dB @10cm 5Vp-p
BRP1704L-30	4000 ± 1000Hz	10,000 ± 30%	30Vp-p	2 Leadwires	-20° to +60°C	80dB @10cm 9Vp-p
BRP1708P-30	4500 ± 500Hz	8000 ± 30%	30Vp-p	2 Pins	-20° to +60°C	95dB @30cm 10Vp-p
BRP2207P-30	4000 ± 500Hz	12,000 ± 30%	30Vp-p	2 Pins	-40° to +120°C	95dB @30cm 10Vp-p
BRP2211P-30	2000 ± 500Hz	19,000 ± 30%	30Vp-p	2 Pins	-20° to +85°C	75dB @10cm 3Vp-p
BRP2304FL-40	5000 ± 500Hz	15,000 ± 30%	40Vp-p	2 Flying Wires	-20° to +60°C	70dB @30cm 12Vp-p
BRP2304L-30	5500 ± 500Hz	12,000 ± 30%	30Vp-p	2 Leadwires	-20° to +60°C	80dB @10cm 10Vp-p
BRP2311P-30-WP*	2500 ± 500Hz	24,000 ± 30%	30Vp-p	2 Long Pins	-20° to +60°C	85dB @30cm 12Vp-p
BRP2405L-30	4000 ± 500Hz	17,000 ± 30%	30Vp-p	2 Leadwires	-20° to +70°C	80dB @10cm 10Vp-p
BRP2406L-30	3000 ± 500Hz	30,000 ± 30%	30Vp-p	2 Leadwires	-20° to +70°C	85dB @10cm 3Vp-p
BRP2407L-30 BRP2407P-30	5600 ± 600Hz 5600 ± 600Hz	10,000 ± 30% 10,000 ± 30%	30Vp-p 30Vp-p	2 Leadwires 2 Pins	-20° to +60°C -20° to +60°C	90dB @30cm 10Vp-p 90dB @30cm 10Vp-p
BRP2711P-30	5600 ± 600Hz	10,000 ± 30%	30Vp-p	2 Pins	-20° to +60°C	90dB @30cm 10Vp-p
BRP3005L-30	4500 ± 500Hz	20,000 ± 30%	30Vp-p	2 Pins	-20° to +60°C	95dB @30cm 10Vp-p
BRP3006P-30	1300 ± 500Hz	45,000 ± 30%	30Vp-p	2 Pins	-20° to +60°C	75dB @30cm 12Vp-p
BRP3008P-30 BRP3008P-30-LF	4600 ± 500Hz 2800 ± 500Hz	20,000 ± 30% 20,000 ± 30%	30Vp-p 30Vp-p	2 Pins 2 Pins	-20° to +60°C -20° to +60°C	90dB @10cm 5Vp-p 95dB @10cm 30Vp-p
BRP3009P-30	2000 ± 500Hz	45,000 ± 30%	30Vp-p	2 Pins	-20° to +60°C	85dB @10cm 12Vp-p
BSP2226FV-30	2000 ± 500Hz	18,000 ± 30%	30Vp-p	2 Fast-on	-20° to +70°C	70dB @10cm 3Vp-p
BSP3206FV-30	3000 ± 500Hz	16,000 ± 30%	30Vp-p	2 Fast-on	-20° to +60°C	95dB @30cm 10Vp-p

\*Model BRP1207P-30-TR on tape and reel with 5mm pin spacing  
\*Model BRP2311P-30-WP is waterproof

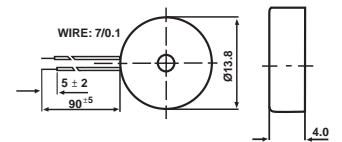
### BRP1207P-30 + BRP1207P-30-TR Series



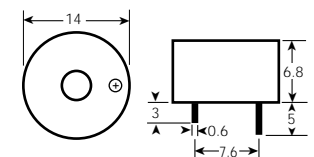
### BRP1305P-25 Series



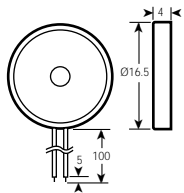
### BRP1404L-30 Series



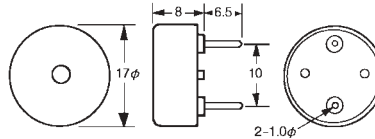
### BRP1407P-20 Series



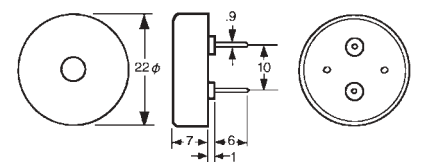
### BRP1704L-30 Series



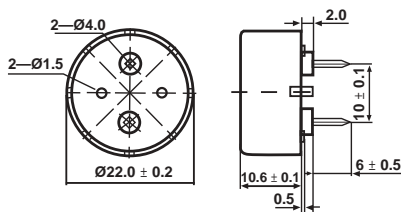
### BRP1708P-30 Series



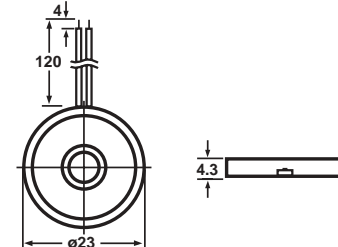
### BRP2207P-30 Series



### BRP2211P-30 Series



### BRP2304FL-40 Series



### BRP2304L-30 Series

