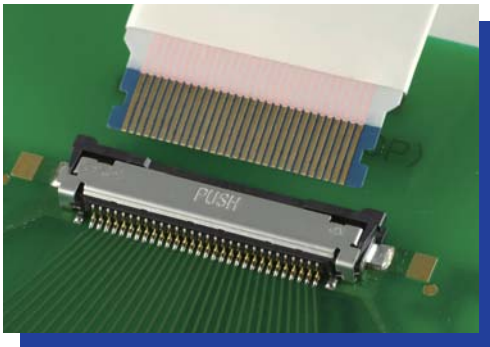


EVAFLEX® 5-VS

0.5mm Pitch Horizontal Type
Non-ZIF Type



EVAFLEX® 5-VS is designed for footprint compatibility with CABLINE®-VS which is VESA standard (Notebook PC FPD, LED Backlight) connector, such alternative concept is possible to support both shielded FFC/FPC and coaxial cable without PCB design change.*1

Moreover, EVAFLEX® 5-VS supports more than 5Gbps high speed signal of internal connection by optimized design of the contact and GND's shape and arrangement.

【Features】

■ High speed transmission

Supports several kind of specifications
(eDP™ / HDMI® / USB / S-ATA / PCIe®)

■ Shield characteristics

Excellent EMI / EMC performance due to metal shell and GND

■ Easy, reliable, high productivity

High productivity is provided by an easy and reliable mating operation by Non-ZIF and auto lock structures

■ Audible click and tactile feel

Insures proper mating and positive locking of FFC/FPC*2

■ Higher reliable connection

Highly reliable contact by I-PEX's unique W-point contact structure

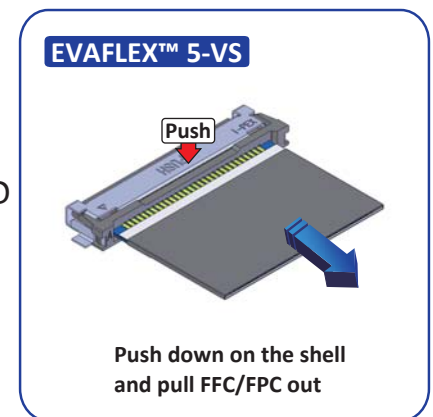
■ High retention force lock structure

Prevents the FFC/FPC from losing connection during high shock and vibration situations

■ GND Cable

Contact : Bottom / Signal contact : Top

【FFC/FPC Un-locking method】



【Number of Positions】

10p, 15p, 20p, 24p, 30p, 40p

【Applicable cable】

Impedance matching Shield FFC / FPC*3
Non-Shielded FFC / FPC*3

【Ordering Code】

20535-0 ****** **E-02**
① ②

①	POS.	10: 10pos	15: 15pos	20: 20pos	24: 24pos	30: 30pos	40: 40pos
②	Packaging	E	Emboss Tape				

*1 : May require some changes due to environmental condition. Please contact us in advance.

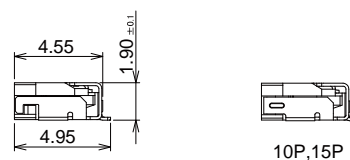
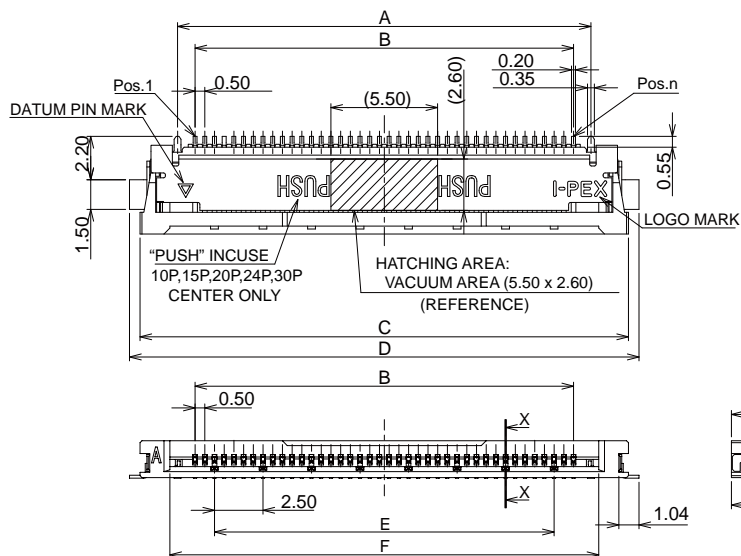
*2 : By a combination of FFC/FPC, audible click and tactile feel change may occur.

*3 : Please contact us for the FFC/FPC drawing and specification.

POS.	A	B	C	D	E	F	G
10	6.30	4.50	10.17	11.25	2.50	7.10	9.30
15	8.80	7.00	12.67	13.75	5.00	9.60	11.80
20	11.30	9.50	15.17	16.25	7.50	12.10	14.30
24	13.30	11.50	17.17	18.25	7.50	14.10	16.30
30	16.30	14.50	20.17	21.25	12.50	17.10	19.30
40	21.30	19.50	25.17	26.25	17.50	22.10	24.30

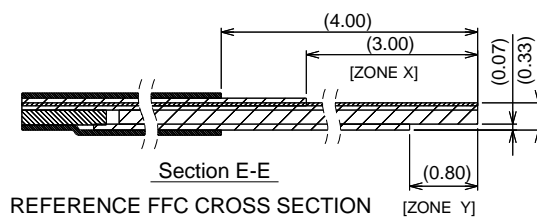
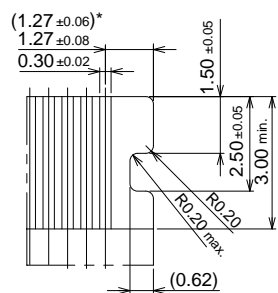
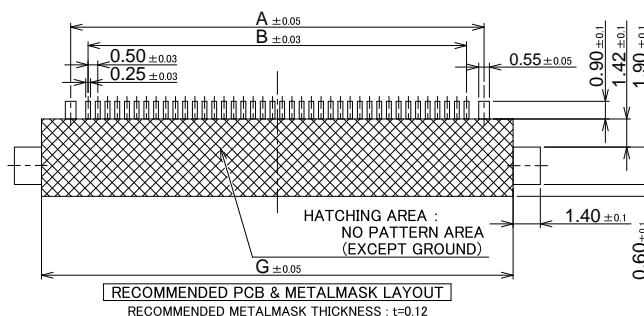
【Material / Finish】

Parts	Material	Plating / Color
HOUSING	HEAT RESISTING PLASTICS UL94V-0	BLACK
CONTACT	COPPER ALLOY	Au
SHELL	COPPER ALLOY	Sn

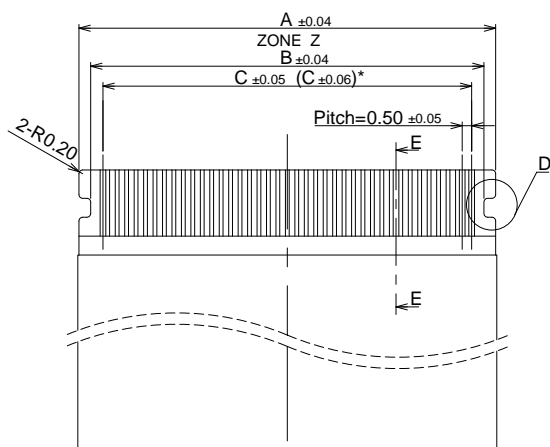


RECOMMENDED FFC DIMENSION

POS.	A	B	C
10P	7.04	5.80	4.50
15P	9.54	8.30	7.00
20P	12.04	10.80	9.50
24P	14.04	12.80	11.50
30P	17.04	15.80	14.50
40P	22.04	20.80	19.50



REFERENCE FFC CROSS SECTION



DETAIL D

