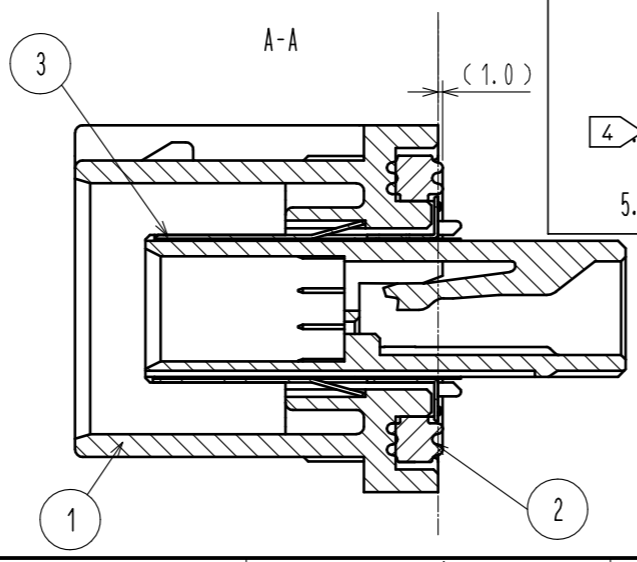
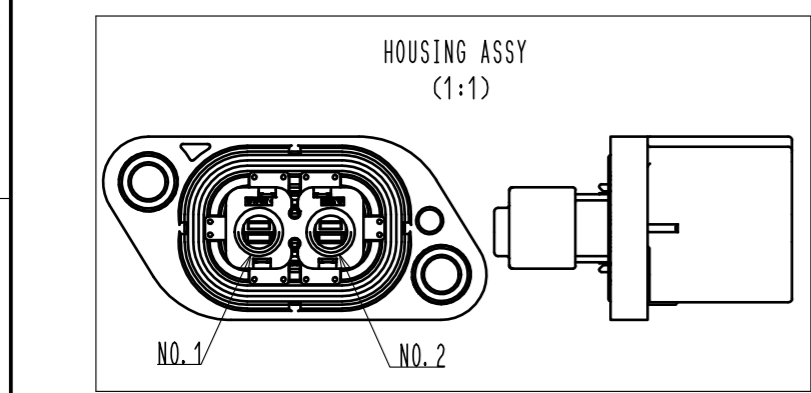
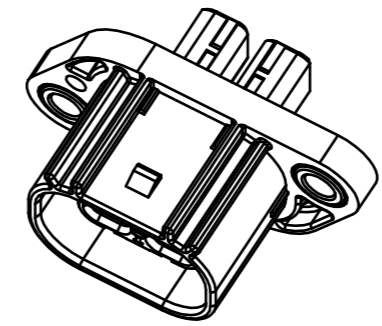
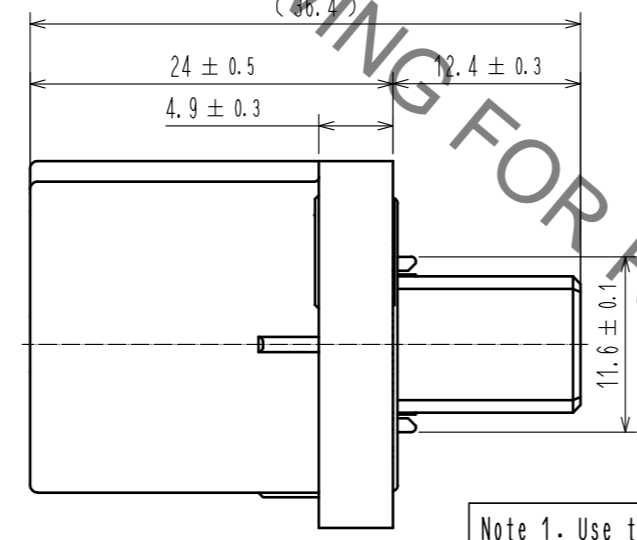
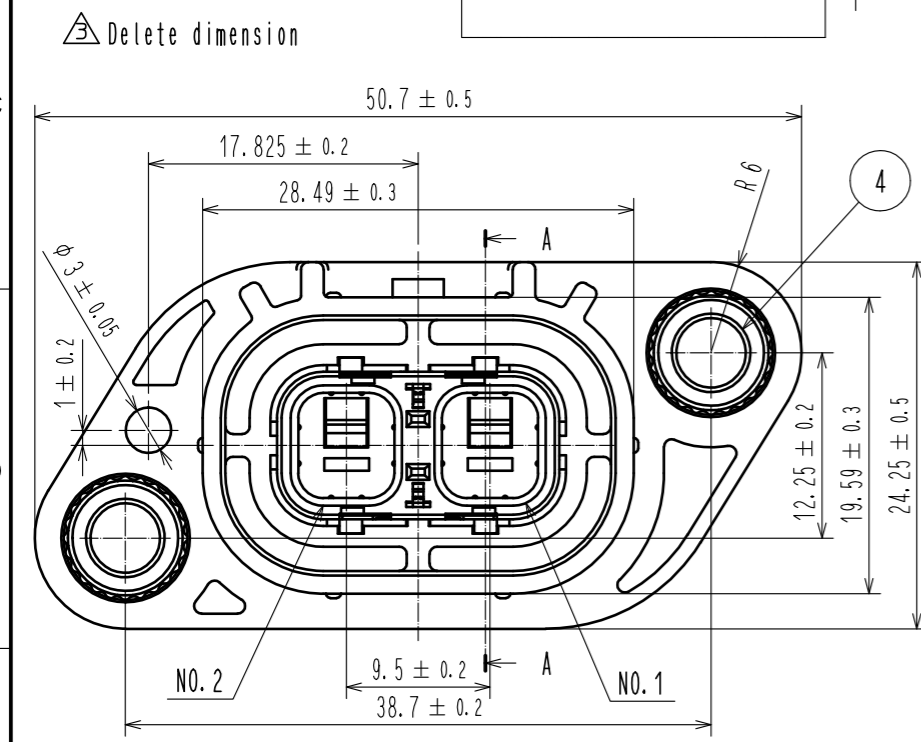
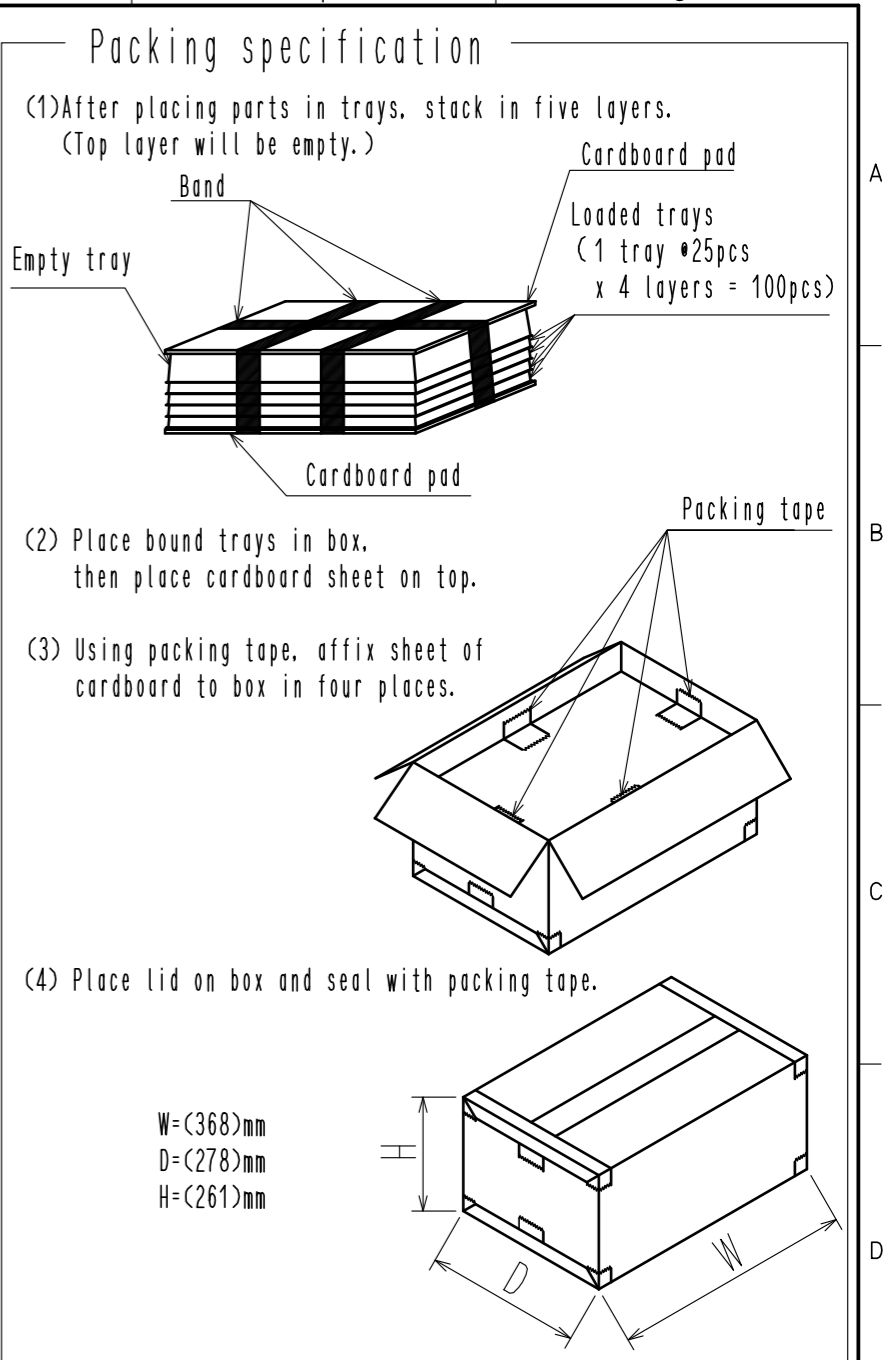
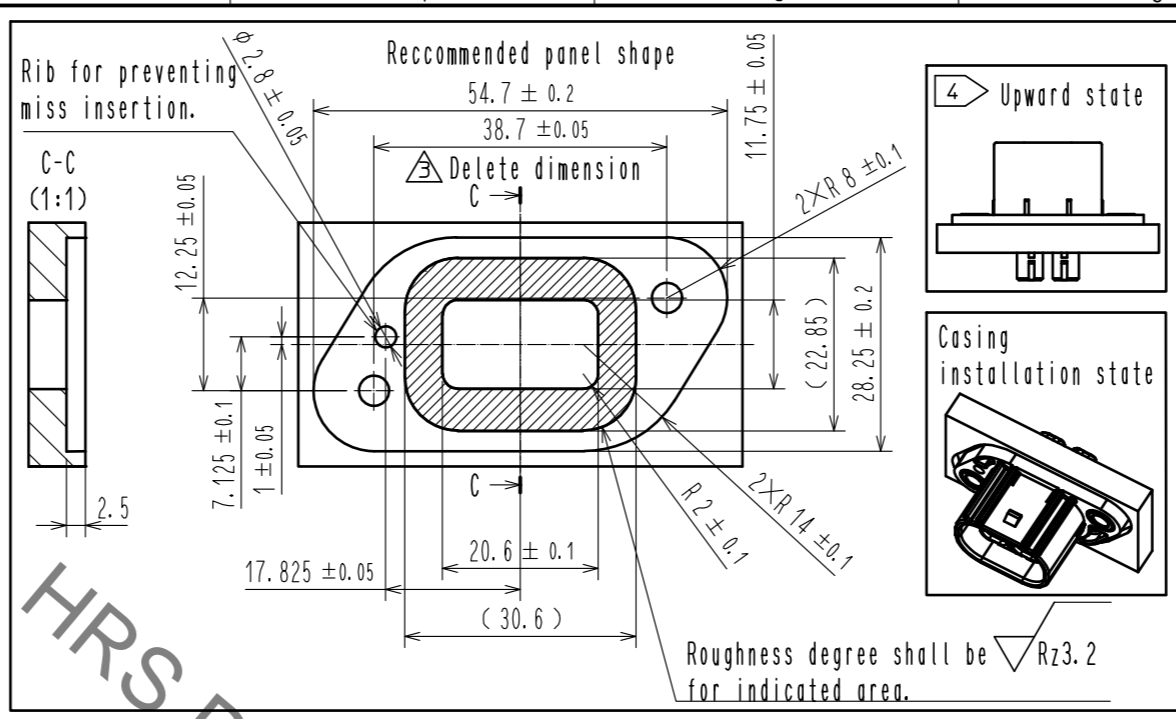
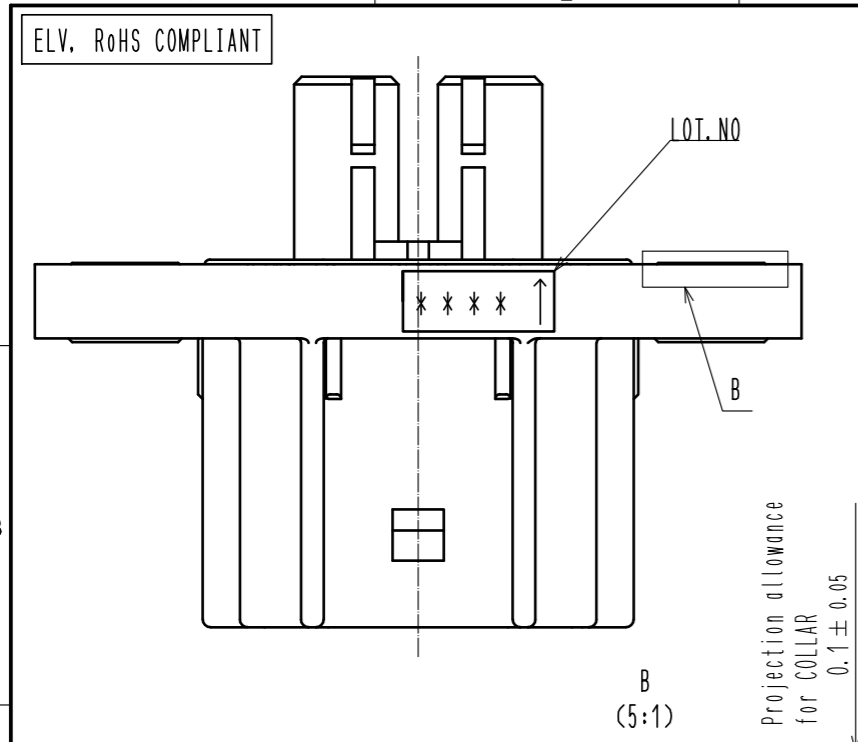


Jan.1.2020 Copyright 2020 HIROSE ELECTRIC CO., LTD. All Rights Reserved.  
 In case of consideration for using Automotive equipment / device which demand high reliability, kindly contact our sales window correspondents.



Note 1. Use the M4 size screw for fixing to panel. Fastening torque shall be  $2.4N \cdot m \pm 20\%$ .  
 2. Counter part is HVH-280-2/2S-HU(CL778-0504-0-00)  
 3. Following parts are available.  
 HOLDER : HVH-280-2/2P-HO(CL778-0506-0-00)  
 POWER CRIMP CONTACT : HVH-280-1214PCF(CL778-0501-0-00)  
 CHECK CRIMP CONTACT : ZE05-2022SCF(CL752-2001-0-00)  
 4. When installing the connector facing upwards, make it into a casing shape in which water does not collect.  
 5. Assembly procedure refer to ETAD-T0573-00

2	SILICONE	WHITE	4	SWCH	SURFACE : NICKEL PLATING 5μm MIN		
1	PBT	ORANGE, UL94 V-0	3	SUS	SURFACE : TIN PLATING 1μm MIN UNDER PLATING: NICKEL PLATING 0.5μm MIN		
NO.	MATERIAL	FINISH . REMARKS	NO.	MATERIAL	FINISH . REMARKS		
UNITS	mm	SCALE	COUNT	DESCRIPTION OF REVISIONS	DESIGNED	CHECKED	DATE
		2 : 1	2	DIS-T-00003442	TS. SHIMIZU	AH. EDASHIGE	18. 07. 26
APPROVED : HK. UMEHARA		16. 11. 28		DRAWING NO. EDC-367811-00-00			
CHECKED : HK. UMEHARA		16. 11. 28		PART NO. HVH-280-2/2P-HU			
DESIGNED : KO. NAKAMURA		16. 11. 28		CODE NO. CL778-0500-0-00			
DRAWN : KO. NAKAMURA		16. 11. 28					