

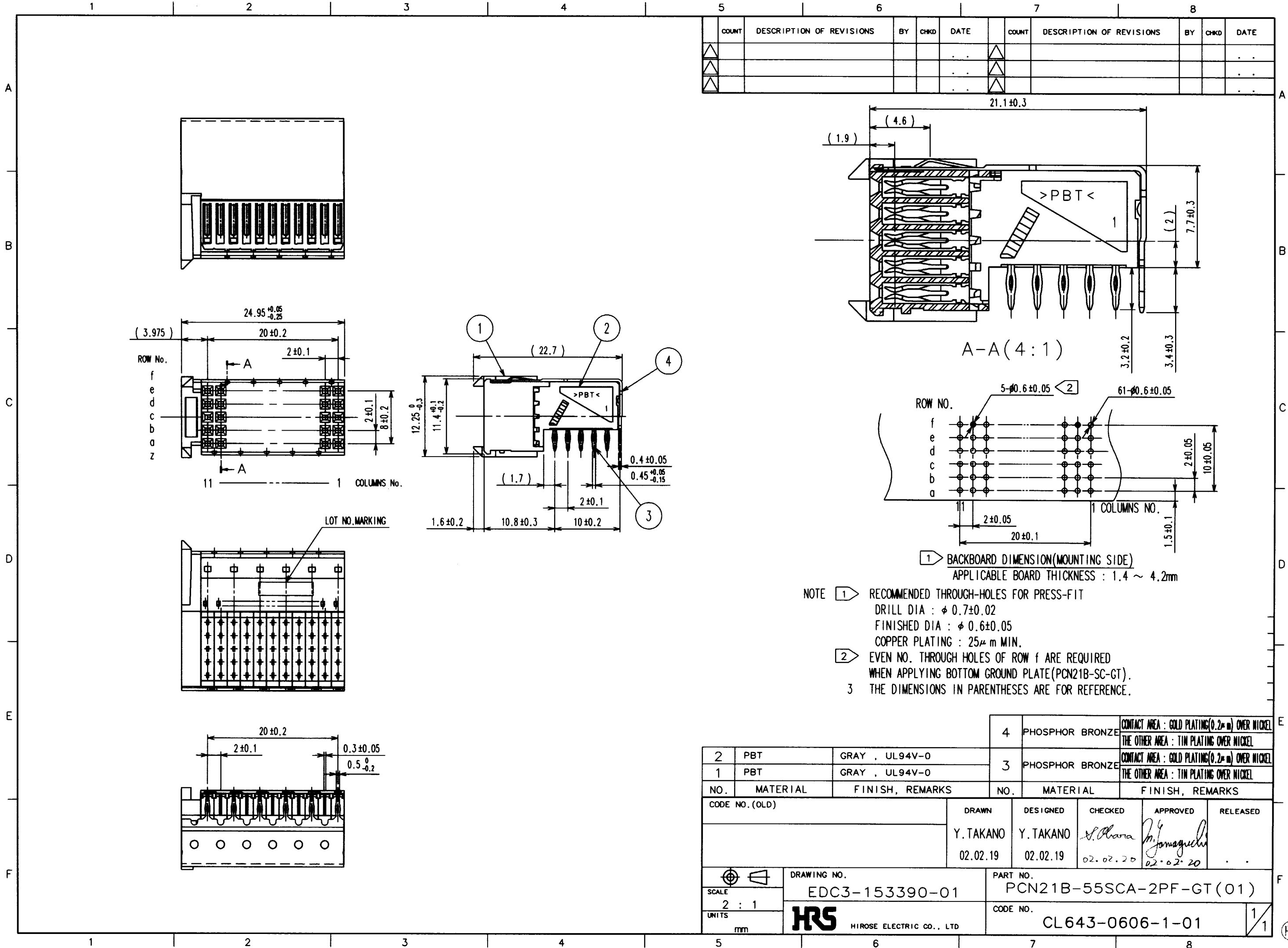
2011/12/15 04:07:02 CAROL TRIBBLE

DRAWING FOR REFERENCE: This is subject to change without notice

COUNT	DESCRIPTION OF REVISIONS	BY	CHKD	DATE	COUNT	DESCRIPTION OF REVISIONS	BY	CHKD	DATE
△ 1	RE-F-08353	N.S	S.O	03.04.11	△				
△					△				
APPLICABLE STANDARD		IEC61076-4-101							
RATING	OPERATING TEMPERATURE RANGE	-55 °C TO +85 °C			STORAGE TEMPERATURE RANGE	-10 °C TO +60 °C			
	VOLTAGE	AC 300 V			OPERATING HUMIDITY RANGE	95 %MAXIMUM (NON-CONDENSING)			
	CURRENT	1.5 A							
<b>SPECIFICATIONS</b>									
ITEM		TEST METHOD			REQUIREMENTS			QT	AT
<b>CONSTRUCTION</b>									
GENERAL EXAMINATION		VISUALLY AND BY MEASURING INSTRUMENT.			ACCORDING TO DRAWING.			X	X
MARKING		CONFIRMED VISUALLY.						X	X
<b>ELECTRIC CHARACTERISTICS</b>									
CONTACT RESISTANCE		100 mA (DC OR 1000 Hz).			30 mΩ MAX. (1)			X	X
INSULATION RESISTANCE		100 V DC.			10 <sup>4</sup> MΩ MIN.			X	---
VOLTAGE PROOF		750 V AC FOR 1 min.			NO FLASHOVER OR BREAKDOWN.			X	X
<b>MECHANICAL CHARACTERISTICS</b>									
MECHANICAL OPERATION		500 TIMES INSERTIONS AND EXTRACTIONS.			① CONTACT RESISTANCE: 40 mΩ MAX. ② NO DAMAGE, CRACK AND LOOSENESS OF PARTS.			X	---
VIBRATION		FREQUENCY 10 TO 500 Hz, SINGLE AMPLITUDE 0.35 mm, 50 m/s <sup>2</sup> FOR 3 DIRECTIONS UNDER 10 CYCLES.			① NO ELECTRICAL DISCONTINUITY OF 1 μs. ② CONTACT RESISTANCE: 40 mΩ MAX.			X	---
SHOCK		490 m/s <sup>2</sup> DURATION OF PULSE 11ms AT 3 TIMES FOR 3 DIRECTIONS.			③ NO DAMAGE, CRACK AND LOOSENESS OF PARTS.			X	---
<b>ENVIRONMENTAL CHARACTERISTICS</b>									
RAPID CHANGE OF TEMPERATURE		TEMPERATURE -55 → 5~35 → +125 → 5~35 °C TIME 30 → MAX 5 → 30 → MAX 5min UNDER 5 CYCLES.			① CONTACT RESISTANCE: 40 mΩ MAX. ② INSULATION RESISTANCE: 10 <sup>3</sup> MΩ MIN. ③ NO FLASHOVER OR BREAKDOWN. ④ NO DAMAGE, CRACK AND LOOSENESS OF PARTS.			X	---
DAMP HEAT (STEADY STATE)		EXPOSED AT +40 ± 2 °C, 90~95 %, 96 h.						X	---
DRY HEAT		EXPOSED AT +125 °C, 16 h.						X	---
COLD RESISTANCE		EXPOSED AT -55 °C, 96 h.						X	---
CORROSION SALT MIST		EXPOSED IN 5% SALT WATER SPPLY FOR 48 h.			① CONTACT RESISTANCE: 40 mΩ MAX ② NO HEAVY CORROSION.			X	---
SULPHUR DIOXIDE △		EXPOSED IN 10 ppm FOR 96 h.						X	---
<b>REMARKS</b>									
NOTE(1) INITIAL RESISTANCE IS 30mΩ FOR THIS PRODUCT BECAUSE OF ITS LARGE BULK RESISTANCE OWING TO THE LONG CONTACTS.				DRAWN	DESIGNED	CHECKED	APPROVED	RELEASED	
				Y.TAKANO 02.02.19	Y.TAKANO 02.02.19	S.OBARA 02.02.20	M.YAMAGUCHI 02.02.20		
Notes QT : Qualification Test AT : Assurance Test X : Applicable Test									
<b>HS</b>		HIROSE ELECTRIC CO., LTD.			SPECIFICATION SHEET			PART NO. PCN21B-55SCA-2PF-GT(01)	
CODE NO.(OLD)		DRAWING NO			CODE NO.			1/1	
CL		ELC4 - 153390-01			CL643 - 0606 - 1- 01				

TO  
PCM  
PCK

TO  
PCM



COUNT	DESCRIPTION OF REVISIONS	BY	CHKD	DATE	COUNT	DESCRIPTION OF REVISIONS	BY	CHKD	DATE

- NOTE
- 1 RECOMMENDED THROUGH-HOLES FOR PRESS-FIT  
 DRILL DIA : φ 0.7±0.02  
 FINISHED DIA : φ 0.6±0.05  
 COPPER PLATING : 25μm MIN.
  - 2 EVEN NO. THROUGH HOLES OF ROW f ARE REQUIRED WHEN APPLYING BOTTOM GROUND PLATE(PCN21B-SC-GT).
  - 3 THE DIMENSIONS IN PARENTHESES ARE FOR REFERENCE.

NO.	MATERIAL	FINISH, REMARKS	NO.	MATERIAL	FINISH, REMARKS
2	PBT	GRAY, UL94V-0	4	PHOSPHOR BRONZE	CONTACT AREA : GOLD PLATING(0.2μm) OVER NICKEL THE OTHER AREA : TIN PLATING OVER NICKEL
1	PBT	GRAY, UL94V-0	3	PHOSPHOR BRONZE	CONTACT AREA : GOLD PLATING(0.2μm) OVER NICKEL THE OTHER AREA : TIN PLATING OVER NICKEL

CODE NO. (OLD)	DRAWN	DESIGNED	CHECKED	APPROVED	RELEASED
	Y. TAKANO 02.02.19	Y. TAKANO 02.02.19	S. Ohara 02.02.20	M. Yamaguchi 02.02.20	

SCALE	DRAWING NO.	PART NO.
2 : 1	EDC3-153390-01	PCN21B-55SCA-2PF-GT(01)
UNITS	CODE NO.	
mm	CL643-0606-1-01	