

M12 panel feed through/PCB angled D-coded

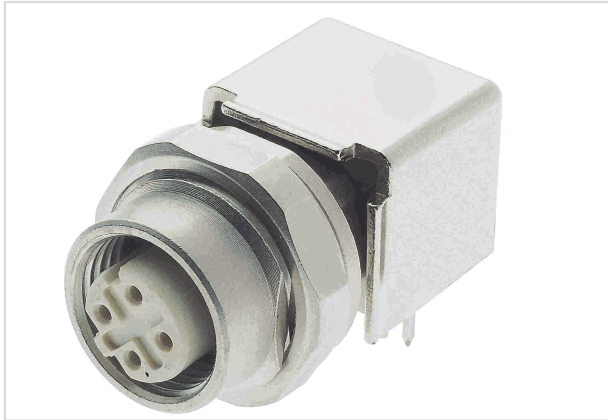


Image is for illustration purposes only. Please refer to product description.

Part number	21 03 381 4430
Specification	M12 panel feed through/PCB angled D-coded
HARTING eCatalogue	https://b2b.harting.com/21033814430

Identification

Category	Connectors
Series	Circular connectors M12
Element	PCB adapter
Specification	Angled for rear mounting

Version

Termination method	Reflow soldering termination (THR)
Gender	Female
Locking type	Screw locking
Shielding	Shielded
Number of contacts	4
Coding	D-coding
Details	Coding bottom left = Cable entry direction on the angled connector: to the right

Technical characteristics

Rated current	4 A
Rated voltage	50 V
Rated impulse voltage	1.5 kV
Pollution degree	3
Transmission characteristics	Cat. 5 Class D up to 100 MHz
Overvoltage category	III
Insulation resistance	$>10^8 \Omega$



Pushing Performance

Technical characteristics

Contact resistance	≤10 mΩ
Tightening torque	2 Nm Lock nut
Ambient temperature	-40 ... +85 °C
Mating cycles	≥100
Degree of protection acc. to IEC 60529	IP67 mated condition
Isolation group	I (600 ≤ CTI)

Material properties

Material (insert)	Liquid crystal polymer (LCP)
Material (contacts)	Copper alloy
Surface (contacts)	Gold plated
Material (hood/housing)	Zinc die-cast
RoHS	compliant with exemption
RoHS exemptions	6(c): Copper alloy containing up to 4 % lead by weight
ELV status	compliant with exemption
China RoHS	50
REACH Annex XVII substances	No
REACH ANNEX XIV substances	No
REACH SVHC substances	Yes
REACH SVHC substances	Lead
ECHA SCIP number	0d7d3693-d625-47ab-934a-d241bf72c86e

Specifications and approvals

Specifications	IEC 61076-2-101
UL / CSA	UL 1977 ECBT2.E235076 CSA-C22.2 No. 182.3 ECBT8.E235076
PROFINET	Yes

Commercial data

Packaging size	10
Net weight	25.16 g
Country of origin	Romania
European customs tariff number	85366990



Pushing Performance

Commercial data

eCl@ss

27460201 PCB connector (board connector)