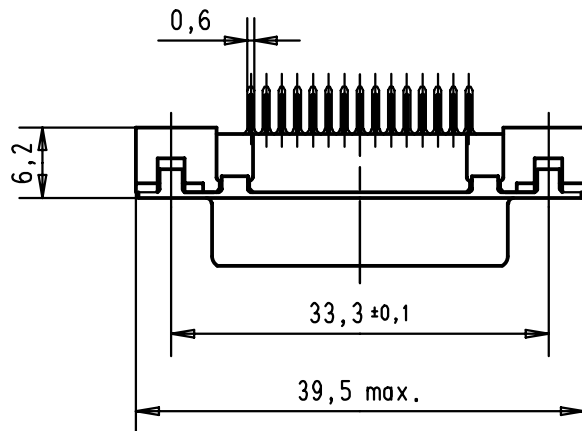
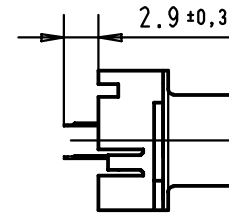
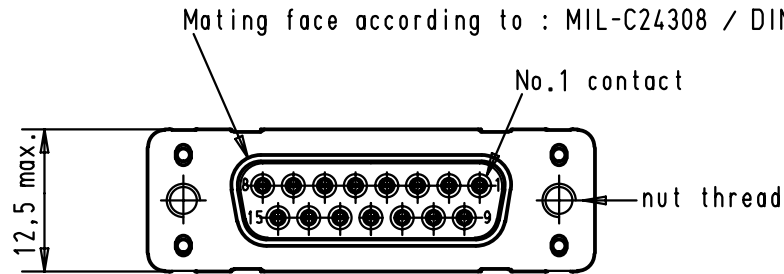
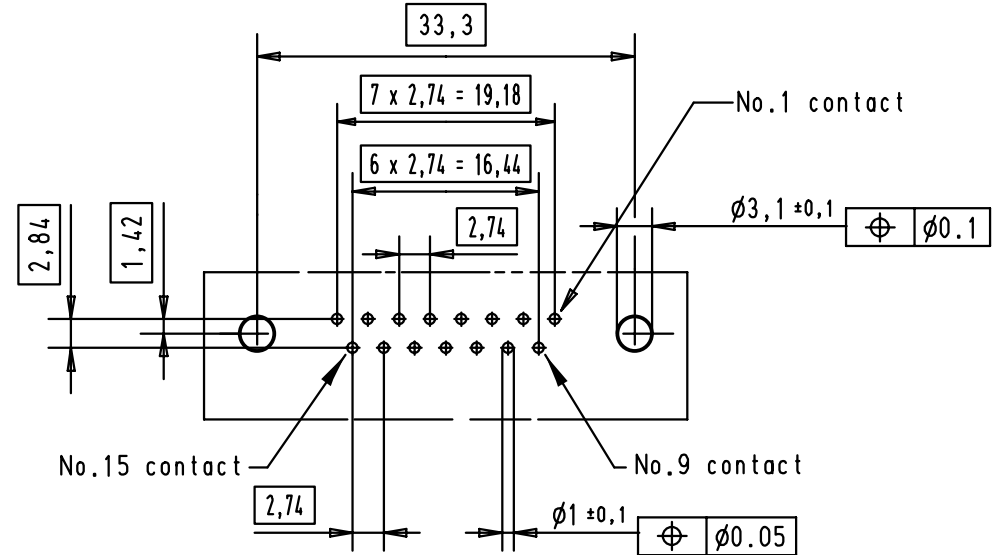


5 4 3 2 1



Printed board layout component side

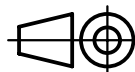



D

C

B

A

09 66 211 6501	M3	2								 All Dim. in mm Orig. Size DIN A 4	D-sub, 15 poles, female, straight, with solder pins 2.9, and nuts.	Maßstab/ Scale 1,5:1
09 66 211 7501	M3	3				Detail.	05/03/02	CV				
09 66 211 5501	M3	0,76 µm Au				Insp.						
09 66 211 6502	4-40 UNC	2				Stand.						
09 66 211 7502	4-40 UNC	3				HARTING EURL F-95972 Paris				TB 09 66 211 x50x	Blatt/ Page 2	
09 66 211 5502	4-40 UNC	0,76 µm Au	29723	05/03/02	CV	Part number Nut thread Performance level Mod. Dat. Name						