



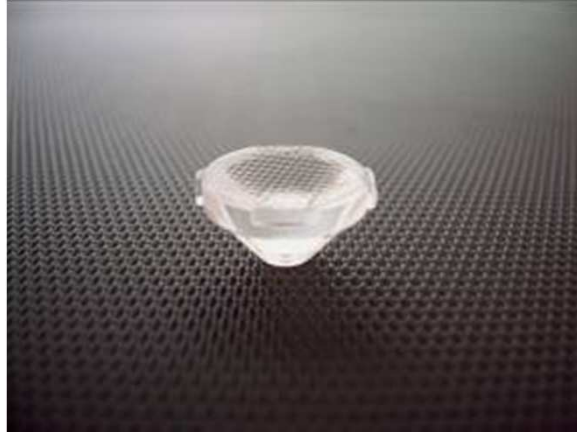
# DATA SHEET

## GLVA1B\*01 Series

Component of the simpleLED® Program

\* Preliminary

## GLVA1B\*01 LENS FOR LUXEON REBEL & REBEL ES



- Lens material optical grade PMMA with high UV and temperature resistance (105°C/220°F). Lens holder molded of high quality black PC.
- High optical efficiency, up to 90%.
- Integrated holder with small position pins, see drawing below for more details.
- Very small and compact dimensions: Diameter 13.5 mm, height 7.3 mm

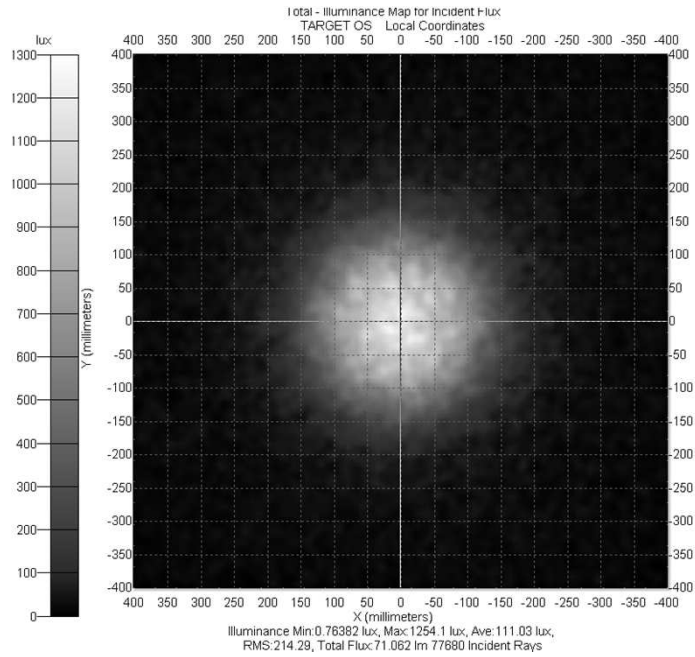
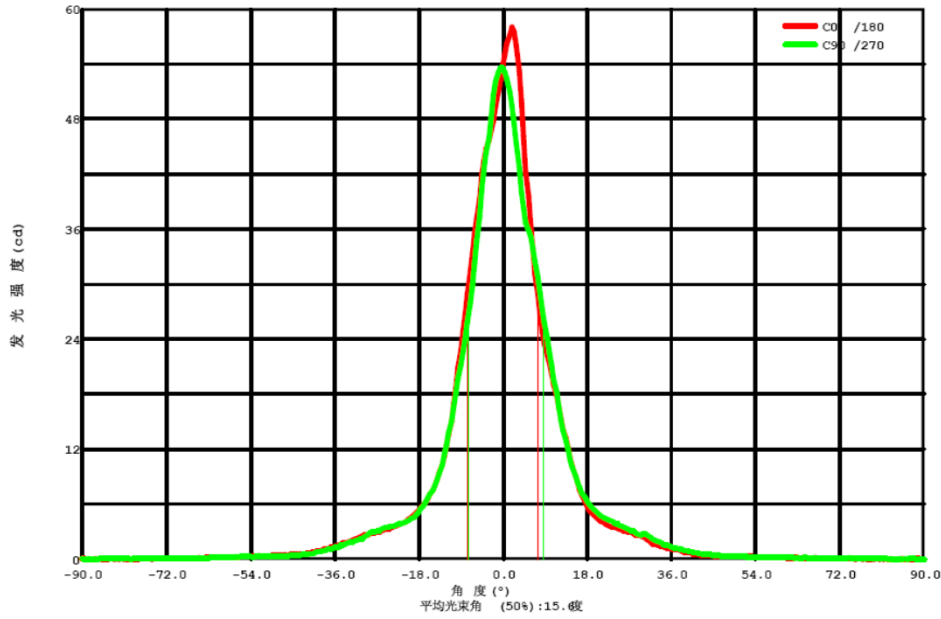
## LENS TYPES

No.	LED	BRAND		SIZE	REBEL	REBEL ES	HOLDER
1	LUXEON Rebel ES	GL	GLVA1BS01	Ø13.5x7.3mm	15°	22°	Yes
2			GLVA1BN01	Ø13.5x7.3mm	27°	27°	Yes
3			GLVA1BF01	Ø13.5x7.3mm	38°	43°	Yes
4			GLVA1BW01	Ø13.5x7.3mm	TBA	TBA	Yes

\* Preliminary

## RELATIVE INTENSITY OF GLVA1BS01

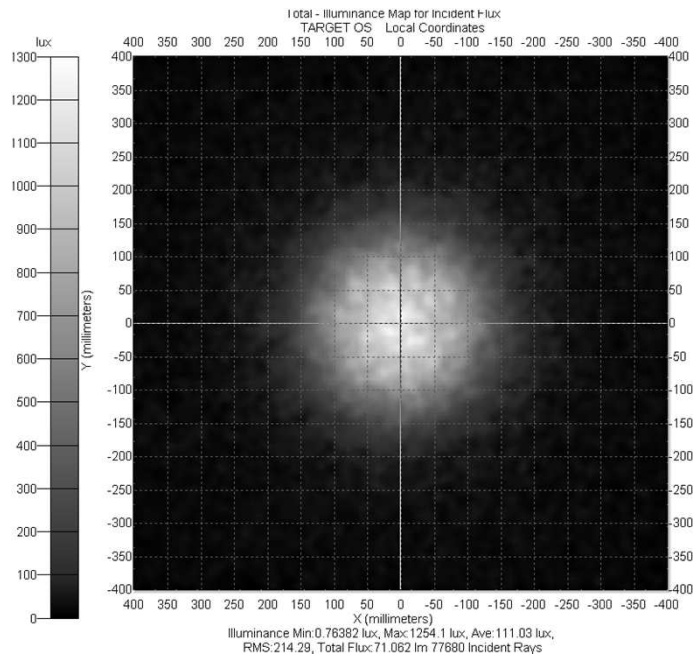
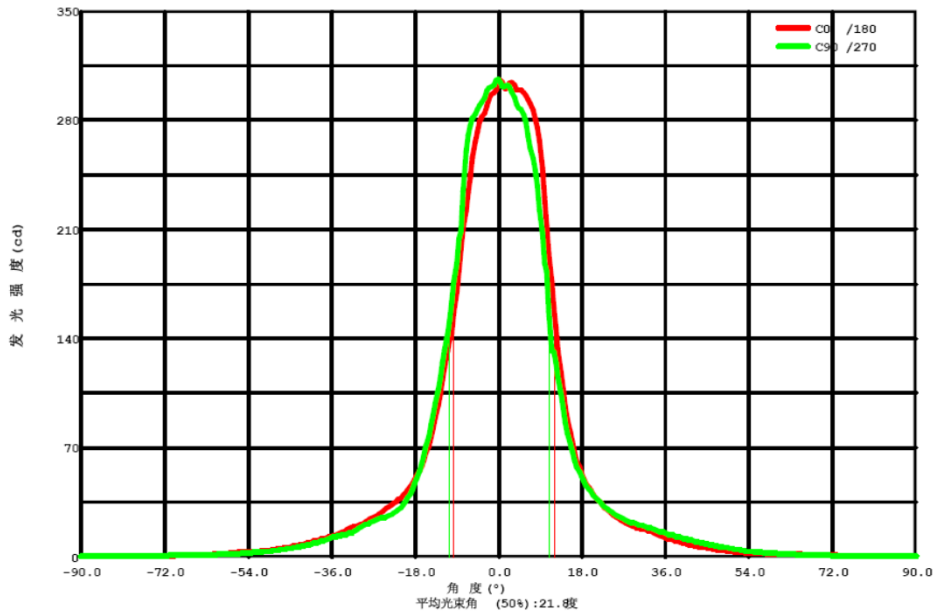
- FOR LUXEON REBEL



\* Preliminary

## RELATIVE INTENSITY OF GLVA1BS01

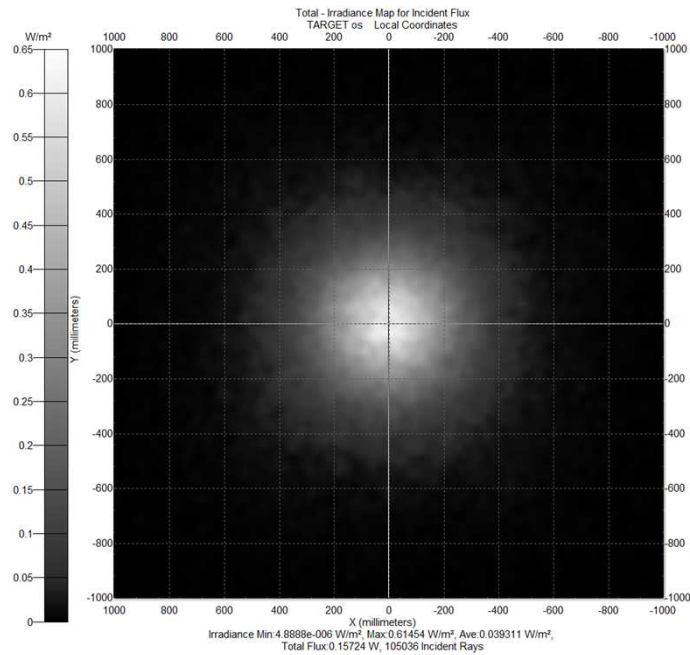
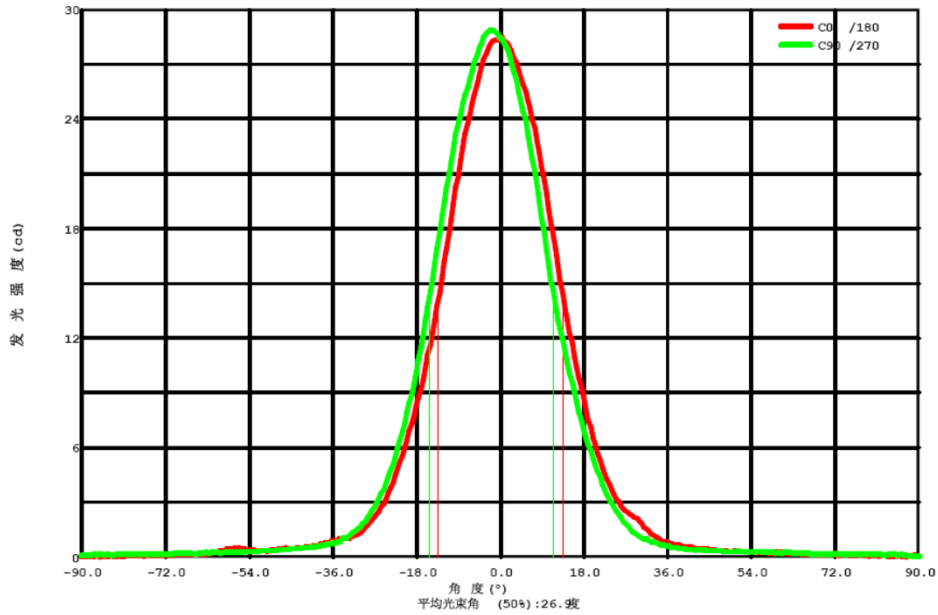
- FOR LUXEON REBEL ES



\* Preliminary

## RELATIVE INTENSITY OF GLVA1BN01

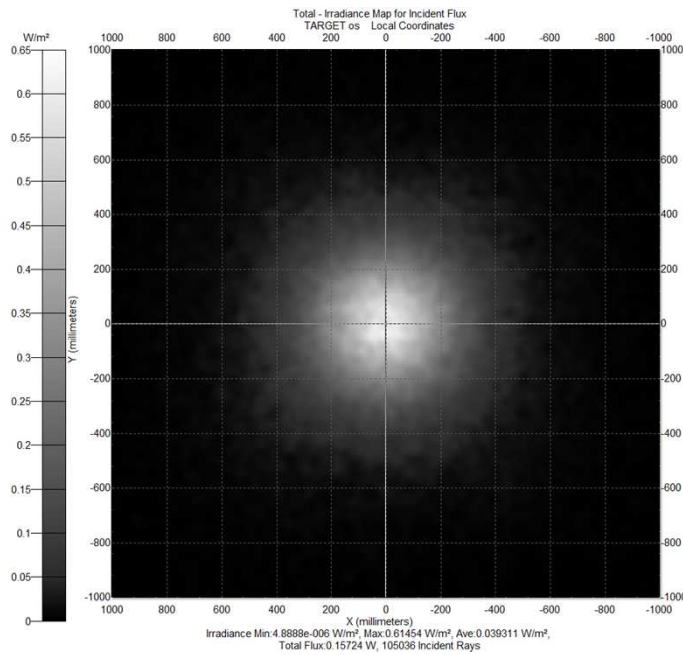
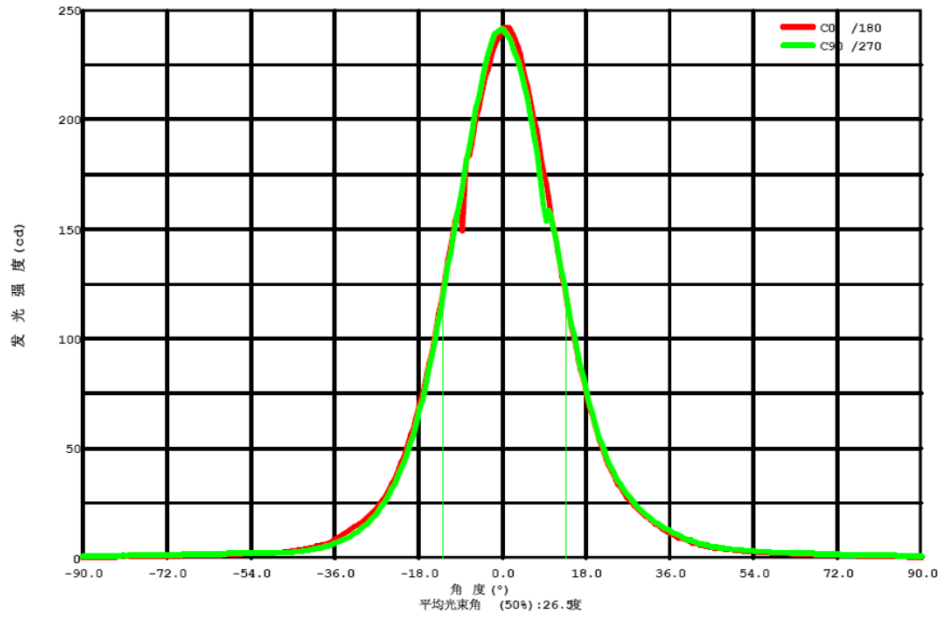
- FOR LUXEON REBEL



\* Preliminary

# RELATIVE INTENSITY OF GLVA1BN01

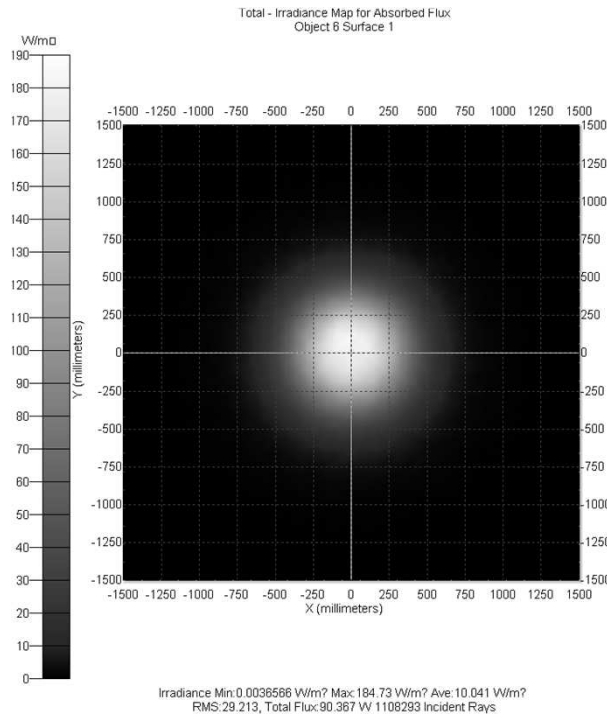
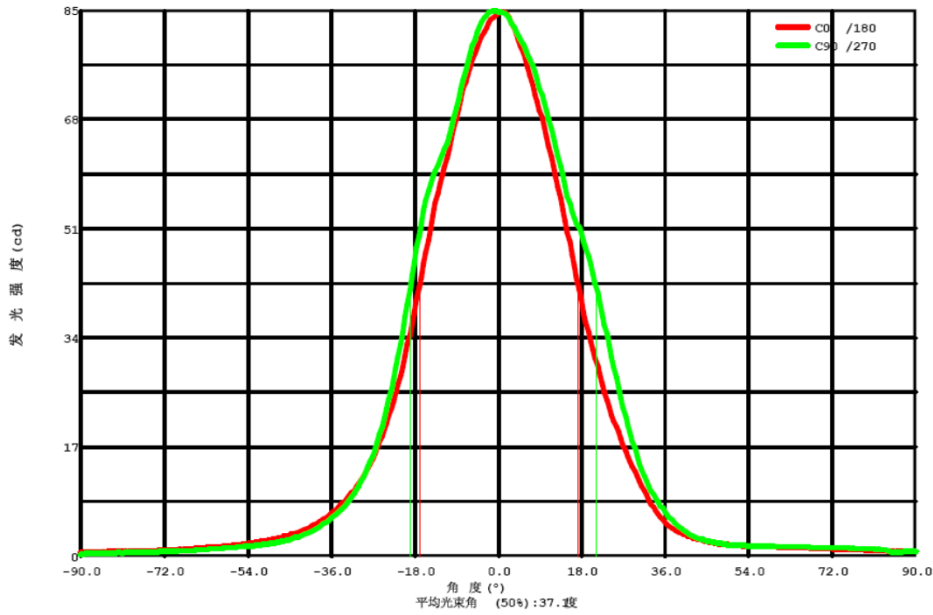
- FOR LUXEON REBEL ES



\* Preliminary

# RELATIVE INTENSITY OF GLVA1BF01

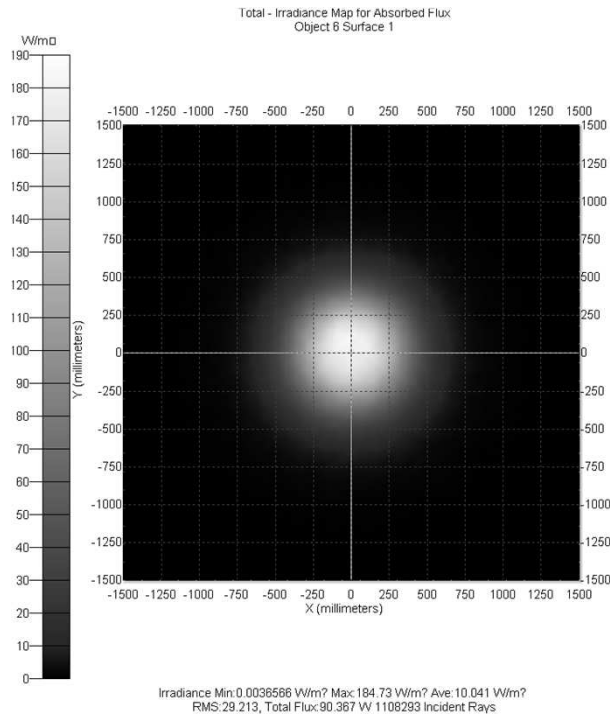
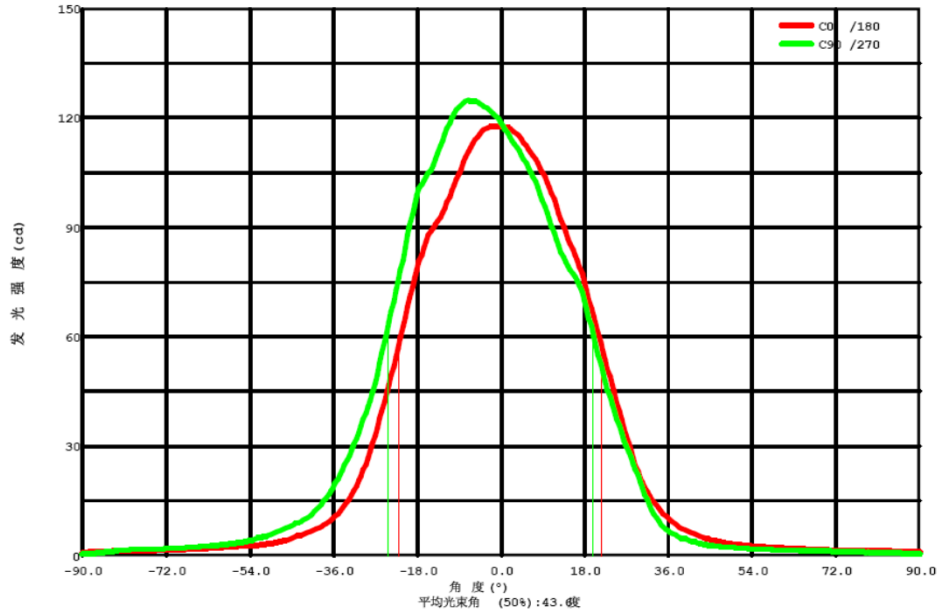
- FOR LUXEON REBEL



\* Preliminary

# RELATIVE INTENSITY OF GLVA1BF01

- FOR LUXEON REBEL ES

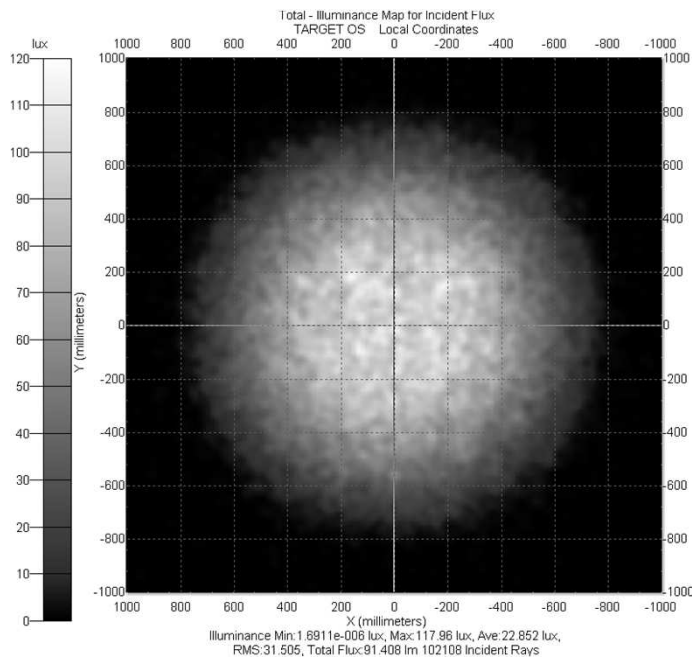
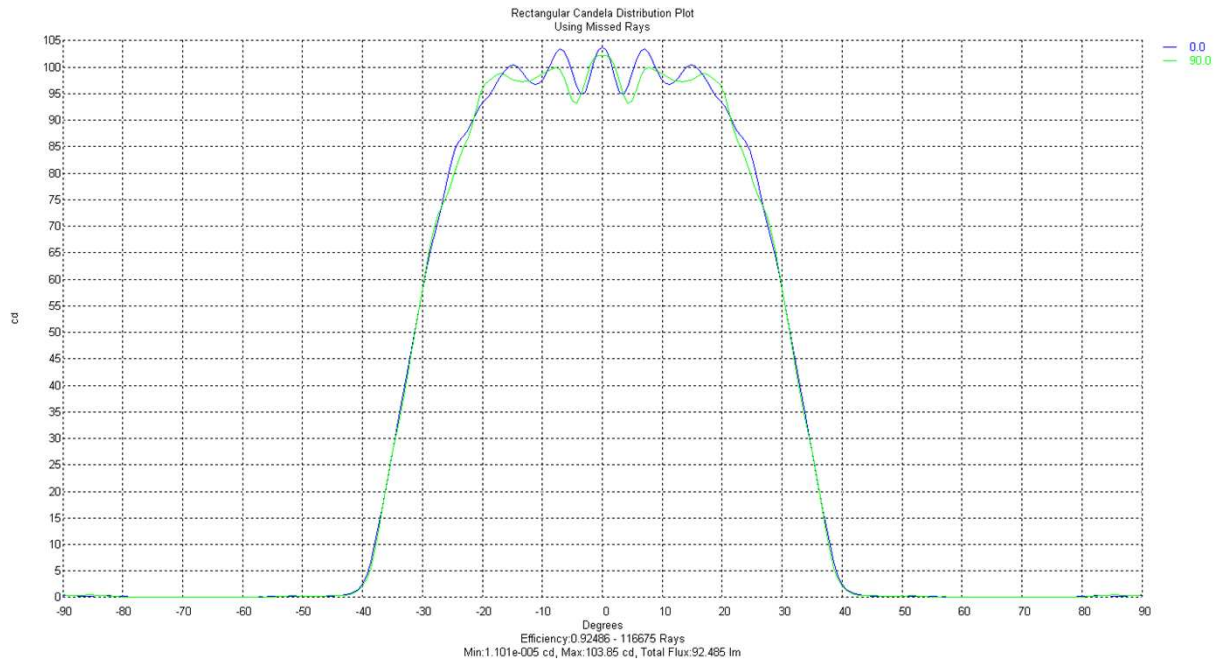


\* Preliminary



# RELATIVE INTENSITY OF GLVA1BW01

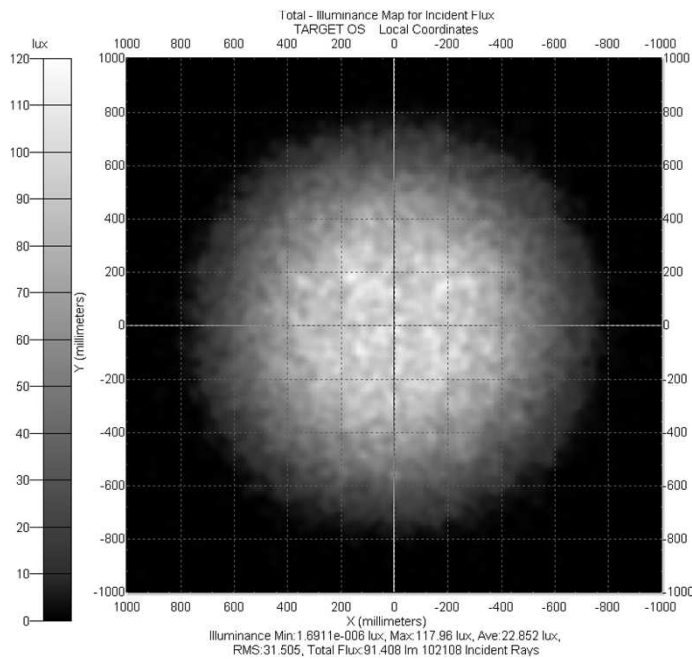
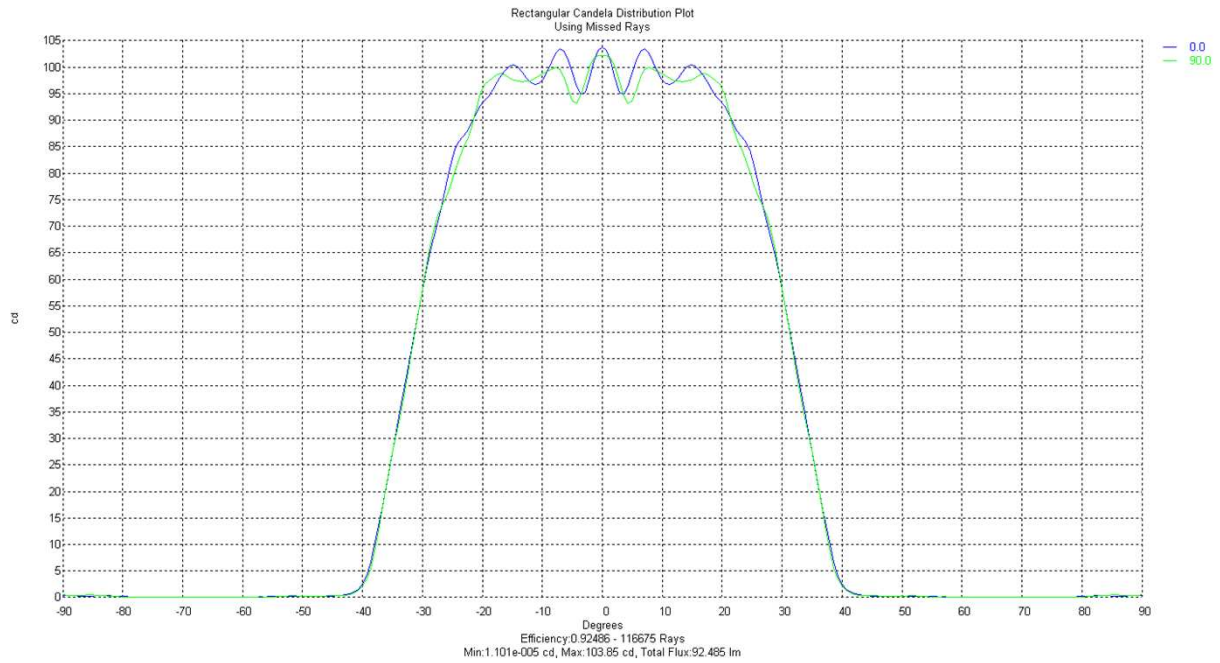
- FOR LUXEON REBEL



\* Preliminary

# RELATIVE INTENSITY OF GLVA1BF01

- FOR LUXEON REBEL ES

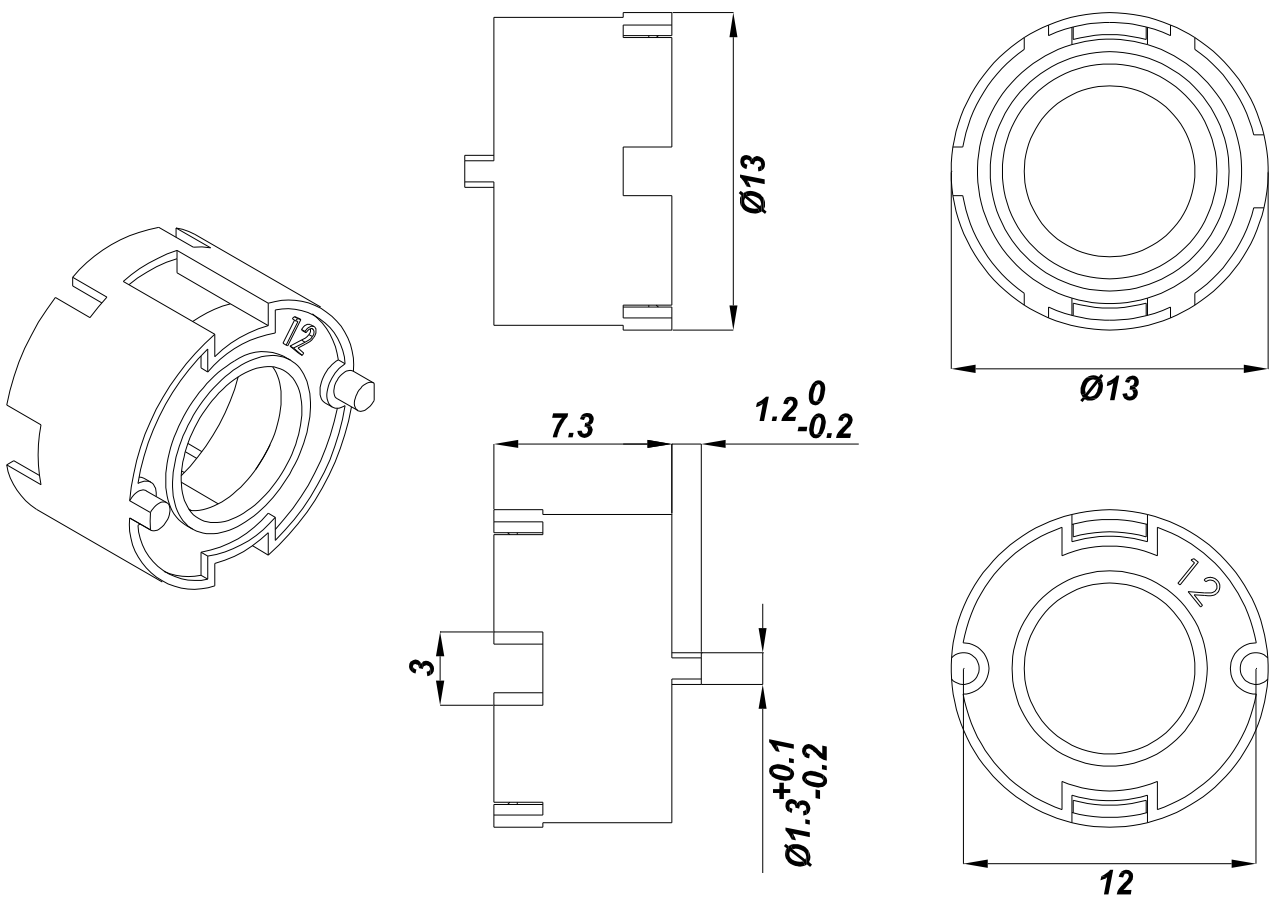


\* Preliminary

## MECHANICAL DRAWINGS

2D drawing with dimensions:

( Unit: mm)



\* Preliminary