



DATA SHEET

GLV91S70701 Series

Part of the simpleLED® Program

simpleLED® GLV91S70701 SERIES

The light engine series consist of 6 high power LUXEON® Rebel ES Royal Blue LEDs. It is engineered to provide customers with the flexibility to select the optimal light source for their applications. Customers also have the option of modifying their light engine by selecting their preferred LUXEON® Rebel LED, optic and/or connector that best suits the application.

FEATURES & BENEFITS

- 3 year manufacturer (GL-Lighting) warranty
- High-reliability LED sources
- Wide operational temperature range
- Multiple configurable options
- Multiple optic options
- Wide range of drive current
- 6 LEDs in series
- Short lead time
- CE certified, UL-Recognized Components

TYPICAL APPLICATIONS

- Display lighting
- Recessed down lighting

Note: All specifications are subject to change without notice.

simpleLED® GLV91S70701 ROYAL BLUE SERIES

PARAMETER		CONDITIONS
PCB		FR4
Finish		White
Size		Length 70mm x Width 70mm
Source Type		LUXEON® Rebel LXML-PR02-1000
Connector	20	20cm UL1007 20Awg Solid Wire
Thermal Resistance (p-n junction to Tp)		Rth= 21 K/W (FR4)
Radiometric Power (Without Optics) Tj=25°C @700mA		Typ. 6180mW
Wavelength		445.0nmλ<math><455.0\text{nm}</math>
Radiant Efficacy		49%
Tp Maximum Temperature		80 °C

ELECTRICAL CHARACTERISTICS

PARAMETER	MIN	TYPICAL	MAX
Forward Voltage (V) @700mA & Tj=25°C	15	18	21
Power Consumption @700mA (W)	10.5	12.6	14.7
Driving Current	100mA	700mA	1000mA

ENVIRONMENTAL CHARACTERISTICS

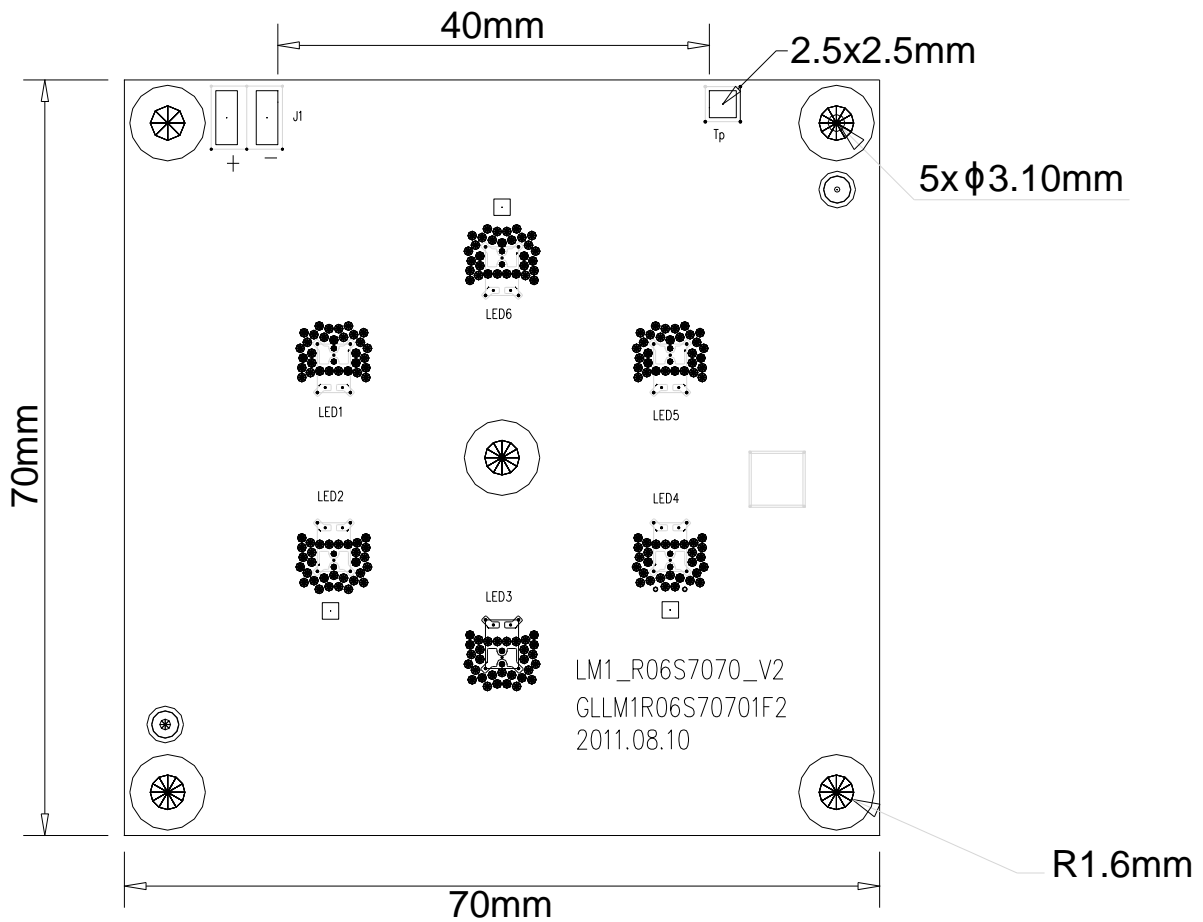
PARAMETER	MIN	MAX
Storage Temperature (°C)	-40	+135
Tj Temperature (°C)	-40	+80

Note: All specifications are subject to change without notice.

MECHANICAL DRAWINGS (GLV91S70701 / FR4)

2D drawing with dimensions:

(Unit: mm)



Note: All specifications are subject to change without notice.

PART NUMBERING & ORDERING INFORMATION

<p>1. PRODUCT SERIES</p> <p>GLV91S70701</p> <p>Square FR4 with 6 LEDs in series</p>	<p>3. LED TYPE</p> <p>LG - LXML LUXEON® REBEL ES</p>	<p>5. CCT</p> <p>00N- Royal Blue</p>
<p>2. CONNECTOR TYPE</p> <p>20 – 20cm UL1007 20Awg Solid Wire</p>	<p>4. NUMBER OF LED</p> <p>6 - 6 LEDs</p>	<p>6. FLUX BIN</p> <p>A – Min.1000mW~1050mW and up @700mA</p>

Part Number :

GLV91S70701 / AA – BB CC DDD E

| | | | | |
 1 2 3 4 5 6

Note: All specifications are subject to change without notice.

COMPANY INFORMATION

About Future Lighting Solutions

Future Lighting Solutions (www.futurelightingsolutions.com) is a leading provider of LED lighting components and support services for solid-state lighting products and installations, including engineering expertise, concept development, full system solutions and online tools that accelerate quality application development. The company is a division of Future Electronics.

About simpleLED®

Future Lighting Solutions simpleLED program has over 500 combinations of LUXEON® LED & Optic configurations, enabling you to select the right Light Engine for your application, eliminate prototyping delays and accelerating time to market. Additional benefits include UL recognized quality and a 3 year warranty. Visit our website and start innovating.

CONTACT DETAILS

In North America:

1-888-LUXEON2

Americas@futurelightingsolutions.com

In Europe:

00-800-44FUTURE

Europe@futurelightingsolutions.com

In Asia:

+800-LUMILEDS

Asia@futurelightingsolutions.com

In Japan:

+81-0120-667-013

Japan@futurelightingsolutions.com

Note: All specifications are subject to change without notice. Warranty provided by the manufacturer, GL-Lighting.