

CAB606RF: SMA SEALED PLUG TO SMA SEALED JACK WITH O-RING, BOTH BRASS, IP68/69K, ALSR-100 CABLE, 6GHz

- SPECIFICATIONS :
- 1. BRASS SMA SEALED PLUG, RATED TO IP68/69K, P/N: RFCT-SMA111-B-M-ALS-S (W/SILICONE GASKET)
  - 2. COAXIAL CABLE, ALSR-100\*, COLOR: BLACK. (SPECIFICATION EQUIVALENT TO LMR-100®)
  - 3. BRASS SMA SEALED JACK WITH O-RING RATED TO IP68/69K, P/N: RFCT-SMA112-B-F-ALS-S (W/ SILICONE O-RING).
  - 4. ALSO APPLICABLE FOR BULKHEAD-MOUNT (WASHER&NUT PROVIDED)

- ENVIRONMENTAL:
- A. SMA SEALED PLUG AND SMA SEALED JACK TESTED TO THE FOLLOWING SPECIFICATION:
- i. IP6X - DUST TIGHT - NO PARTICLE INGRESS.
  - ii. IPX8 WATERPROOF FOR 48 HOURS AT 1 METER UNDERWATER.
  - iii. IPX9K WATER SPRAY, 14-16L PER MINUTE, AT 8,000 ~ 10,000 KPA, AT 100-150MM DISTANCE FOR 30 SECONDS.

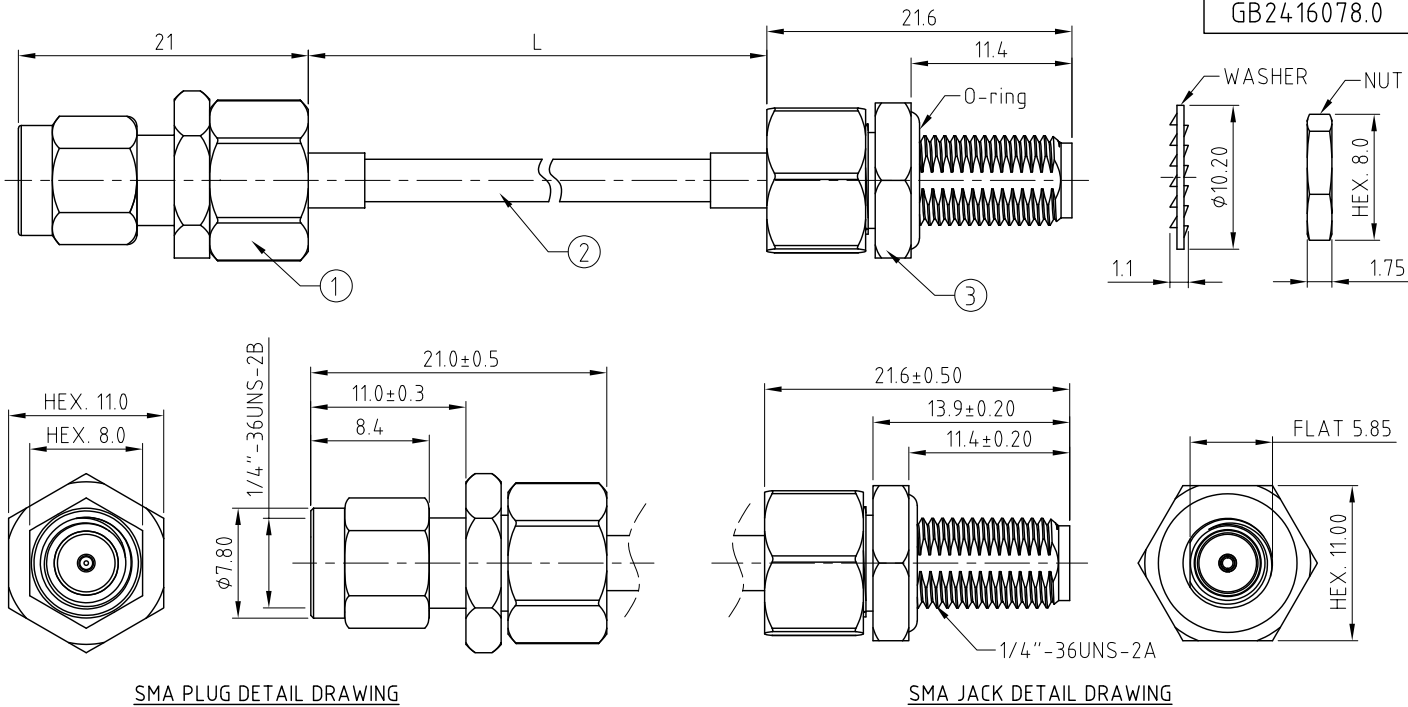
- NOTES:
- 1. WORKING FREQUENCY RANGE: DC-6GHz.
  - 2. OPERATING TEMPERATURE: -40°C TO +85°C.
  - 3. IMPEDANCE: 50 OHM.

HOW TO ORDER  
CAB606RF - X X X X - X - 1

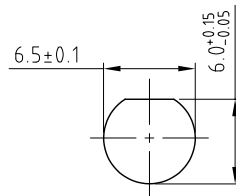
"L" LENGTH IN MM:  
eg: 500MM = 0500  
MIN. 0050, MAX. 5000,  
STANDARD = 0152(6-inch),  
0304(12-inch), 0609(24-inch),  
0914(36-inch)  
Tolerance: 50mm: ±2mm.  
51-200mm: ±5mm.  
201-500mm: ±7mm.  
501-999mm: ±10mm.  
≥1000mm: ± (L x 0.02)mm.

CABLE SIZE:  
1 = ALSR-100 CABLE, COLOR: BLACK

WASHER AND NUT OPTIONS:  
BLANK = SEPARATELY PACKED (STANDARD)  
A = ALL ASSEMBLED WITH CONNECTOR



Patent Pending  
GB2416077.2  
GB2416078.0



RECOMMENDED SMA JACK MOUNTING HOLE  
APPLICABLE PANEL THICKNESS:  
MIN. 0.7MM ~ MAX. 3.2MM

