

[Download Datasheet](#)

### MC116-NA

4G



Air Interface: 4G

Region: North America

Based on Qualcomm platform, the Fibocom MC116-NA module adopts LCC+LGA form factor and is pin-to-pin compatible with the Fibocom LTE Cat 4 module NL668. Fibocom's MC116-NA module supports LTE FDD frequency bands, with a theoretical downlink peaking at 10 Mbps and an uplink of 5 Mbps. Additionally, the Fibocom MC116-EUL module is backward compatible with WCDMA/ GSM frequency bands, which helps to reduce the complexity of deployment.

The module supports Windows, Linux and Android operating systems. With a rich extension of interfaces including SIM 1.8V/3.0V, USB2.0, UART, I2C etc., the LTE Cat 1 module MC116 can be widely applied in IoT scenarios such as telematics, smart payments, public security, asset tracking and so on.

### Product Specifications

#### Basic Features

#### Package

LCC+LGA

#### Dimension (mm)

32.0 x 29.0 x 2.4

#### LTE FDD

Hi there! 🙋  
 What can we help you today?

Stock Code: 300638

Chinese Contact Us Log In



### Product recommendation



#### MC116-EUL

LTE Cat 1 Modules

[Learn More >](#)



#### NL668-AM

LTE Cat 4 Modules

[Learn More >](#)



#### MA510-GL

LTE Cat M Modules

[Learn More >](#)

### Step Forward

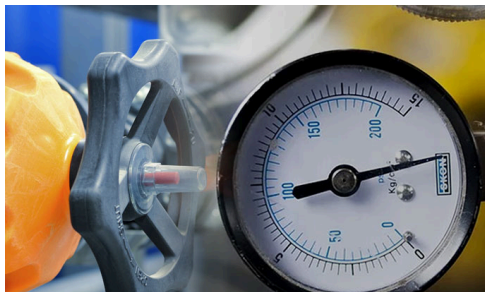
Get Started with  
Fibocom Embedded Intelligence

[Contact Us](#)

### Related IoT Applications



Smart Grid



Smart Meter



Smart POS

Hi there! 🙋  
What can we help you today?

Copyright 2024 Fibocom Wireless Inc.

[Compliance Policies](#) [Careers](#) [Contact Us](#)

Hi there! 🙋  
What can we help you today?