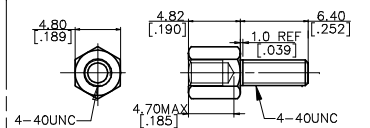


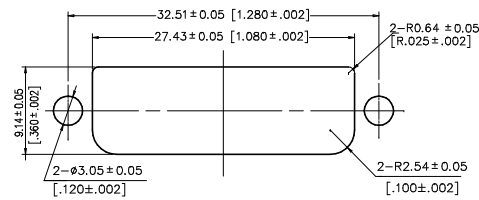
RECOMMENDED FEMALE SCREW LOCK FOR QH1112*-DB8F-4F



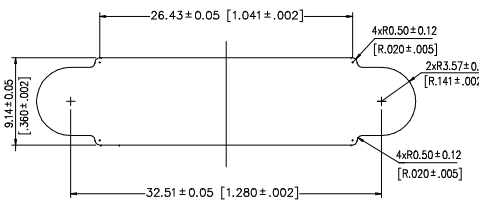
RECOMMENDED FEMALE SCREW LOCK FOR QH1112*-DB8E-PF

PART NO.: QH1112*-DB8*-#F

- EXTENSION CODE
- DB8E-4F: W/O FEMALE SCREW LOCK
- LEAD FREE, DIGITAL TYPE, TOTAL: 24 PIN.
- DB8F-4F: W/FEMALE SCREW LOCK
- LEAD FREE, DIGITAL TYPE, TOTAL: 24 PIN.
- DB8E-PF: W/ FEMALE SCREW LOCK, BUT UNLOADED AND PACKED WITH CONNECTOR
- LEAD FREE, DIGITAL TYPE, TOTAL: 24 PIN.
- GOLD PLATED THICKNESS AT CONTACT AREA:
 - 1 = GOLD FLASH
 - 2 = 20u" gold plating
 - 3 = 30u" gold plating
- NO. OF CONTACT POSITIONS: 12 = 24 POS. (FOR DIGITAL CONTACT)
- TERMINATION TYPE: 1 = FEMALE
- BODY TYPE: 1 = RIGHT ANGLE PCB MOUNT

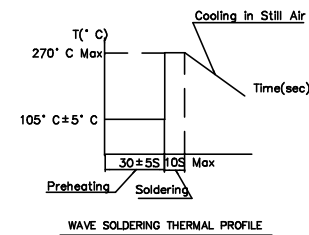


RECOMMEND PANEL CUT-OUT 'A'

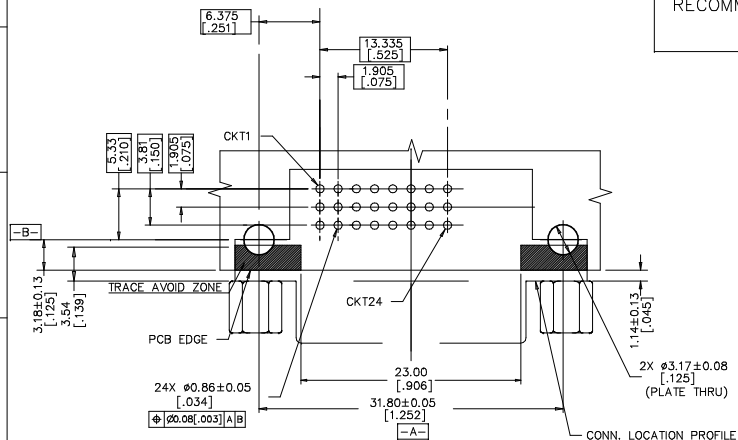


RECOMMEND PANEL CUT-OUT 'B'

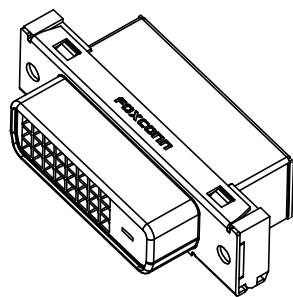
- NOTES:
- BASE UPON DDWG DVI REV. 1.0 STANDARD.
 - ELECTRICAL CHARACTERISTICS:
 - CONTACT CURRENT RATING: 1.5 A.
 - CONTACT RESISTANCE:
 - INITIAL: 20 MILLIOHMS MAXIMUM, PER CONTACT MATED PAIR.
 - AFTER CONDITIONING: 10 MILLIOHMS MAXIMUM CHANGE.
 - DIELECTRIC WITHSTANDING VOLTAGE: 500±50 V DC.
 - INSULATION RESISTANCE: 1 GEGAOhm MINIMUM.
 - MECHANICAL CHARACTERISTICS:
 - CONNECTOR MATING & UNMATING FORCES:
 - MATING FORCE: 4.5 Kgf MAXIMUM.
 - UNMATING FORCE: 1~4 Kgf.
 - DURABILITY: 100 CYCLES
 - CONNECTOR INSERTION (TO PCB) & SEPARATION (FROM PCB) FORCE:
 - INSERTION: 2 Kgf MAXIMUM.
 - SEPARATION: 0.8 Kgf MINIMUM.
 - TEMPERATURE RATING: -20~85°C.
 - CONTACT RETENTION FORCE: 0.5Kgf MINIMUM.
 - ENDURANT TWISTING FORCE OF THE SCREW: 5Kgf-cm MAXIMUM.
 - RECOMMENDED THICKNESS OF PCB: 1.57±0.08 [.062±.003].
 - "ROHS" COMPLIANT.
 - RECOMMENDED PROCESS:



WAVE SOLDERING THERMAL PROFILE



P.C.B LAYOUT (COMPONENT SIDE VIEW)
P.C.B THICKNESS: 1.57±0.08 [.062±.003]
UNSPECIFIED TOLERANCE ±0.05 [.002]



TYPE	QH1112*-DB8F-4F	W/ FSL	B
TYPE II	QH1112*-DB8E-PF	W/ FSL, BUT UNLOADED AND PACKED WITH CONNECTOR	A
TYPE I	QH1112*-DB8E-4F	W/O FSL	A
TYPE	P/N	CHARACTER	PANEL CUT-OUT

ITEM	DESCRIPTION	Q'TY	MATERIAL	TREATMENT	REMARK
7	FEMALE SCREW LOCK (FSL)	2	METAL	NICKEL PLATED	SEE PART NO.
6	HOUSING	1	THERMOPLASTIC UL 94V-0	MOLDED COLOR: IVORY	
5	SPACER	1	THERMOPLASTIC UL 94V-0	MOLDED COLOR: IVORY	
4	DIGITAL CONTACT	24	COPPER ALLOY	50u" MIN. NICKEL UNDERPLATED; GOLD PLATED AT CONTACT AREA; 100u" MIN. Sn ALLOY (LEAD FREE) PLATED AT SOLDER TAIL.	
3	BOARD LOCK	2	STEEL	NICKEL PLATED OVERALL; TIN PLATED OVER NICKEL	
2	FRONT SHELL	1	STEEL	NICKEL PLATED	
1	REAR SHELL	1	STEEL	NICKEL PLATED	

X. ±	X'. ±	UNITS mm [INCH]	NAME (INTENDED USE)	FOXCONN
.X ±	.X' ±	MAT'L	CUSTOMER	HON HAI PRECISION IND. CO., LTD. TAIPEI, TAIWAN, R.O.C.
.XX ± 0.25 [0.010]	.XX' ±	N/A	PART NO. (INTENDED USE)	TITLE: DVI RECEPTACLE CONN. (DIGITAL)
.XXX ±	.XXX' ±	FINISH	QH1112*-DB8*-#F	DWG NO.: 301-0000-****
		N/A	APPD: Corel Zhu 7/27'11	
		Q'TY	CHKD: J W Gu 7/27'11	
		N/A	DR: QianCheng 7/27'11	

THESE DRAWINGS AND SPECIFICATIONS ARE THE PROPERTY OF HON HAI PRECISION IND. CO., LTD. AND SHALL NOT BE REPRODUCED COPIED OR USED IN ANY MANNER WITHOUT THE PRIOR WRITTEN CONSENT OF HON HAI PRECISION IND. CO., LTD.

SCALE	SHEET	REV.
1:1	1/1	X1