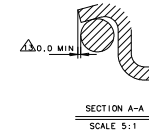
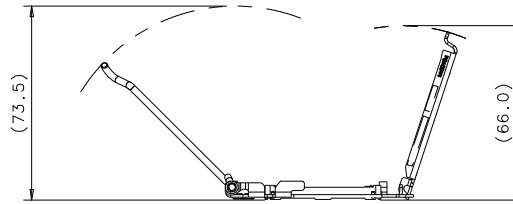


IDEAS GENERATED DRAWING, DO NOT CHANGE BY HAND.

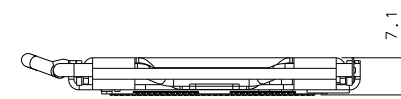
NOTES:

1. ALL DIMENSIONS ARE IN MILLIMETERS.
2. DIMENSIONING AND TOLERANCING PER ASME Y14.5M-1994.
3. MATERIAL : PLASTIC PARTS THERMOPLASTIC, UL94V-0;
CONTACT COPPER ALLOY;
PLATING 10u* Min. Au AND 20u* Min Pd/Ni PLATED ON CONTACT AREA
SAM METAL PARTS STAINLESS STEEL;
SOLDER BALL LEADED FOR PE12070*-3742-01N
LEAD FREE FOR PE12072*-3742-01F
PICKUP CAP THERMOPLASTIC, UL94V-0;
4. THICKNESS OF SOCKET (FROM SEATING PLANE TO PCB):
3.80±0.20 AFTER SOLDERING PROCESS
5. USER INTERFACE :
A) ACTUATION BY LOAD LEVER WITH HAND;
B) LEVER LIFT-UP TO OPEN & PUSH-DOWN TO LOCK;
C) FASTEN THE SOCKET WITH M3.5 SCREW BEFORE CPU INSERTION;
CONTACT TIP COPLANARITY : 0.20mm MAX.;
CONTACT TIP T.P. : 0.20mm MAX.;
- △ DATE CODE AND SOCKET NAME LOCATED APPROXIMATELY:
SOCKET C32 FOR LEAD
LF SOCKET C32 FOR LEAD FREE
- △ SOCKET CENTER OF GRAVITY MARK POSITION;
- △ PIN 1 INDICATOR MARK LOCATED APPROXIMATELY;
10. HARMFUL MATERIAL CONTROL FOLLOWS DOC. NO. *EPI12* RoHS COMPLAINT;
11. PLEASE CONTACT FOXCONN SALES REPRESENTATIVE TO VERIFY PRODUCT DETAILS & AVAILABILITY.
12. P/N: PE12072B-3742-01F
- △ LOAD LEVER IS NOT ALLOWED TO EXCEED LATCH OF SUPPORT PLATE.

REV.	ECN. NO.	APPD.
A	HC060728	Dickie
B	BC097062406	Nick Lin
C	BC100150700	Nick Lin
D	BC110014454	Nick Lin
E	BC-12-0013955	Dickie
F	BC-12-0017717	Dickie

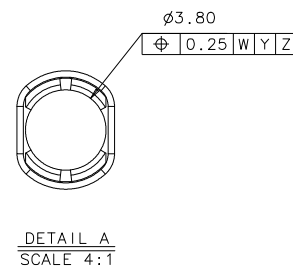
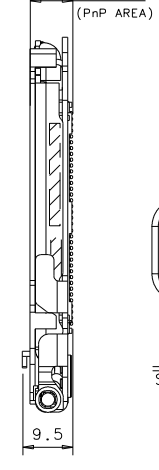
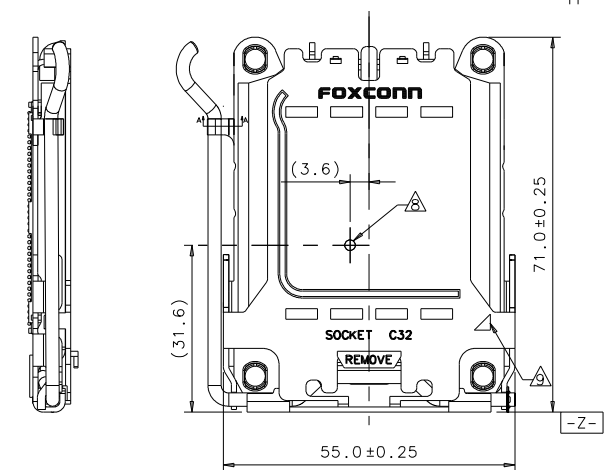
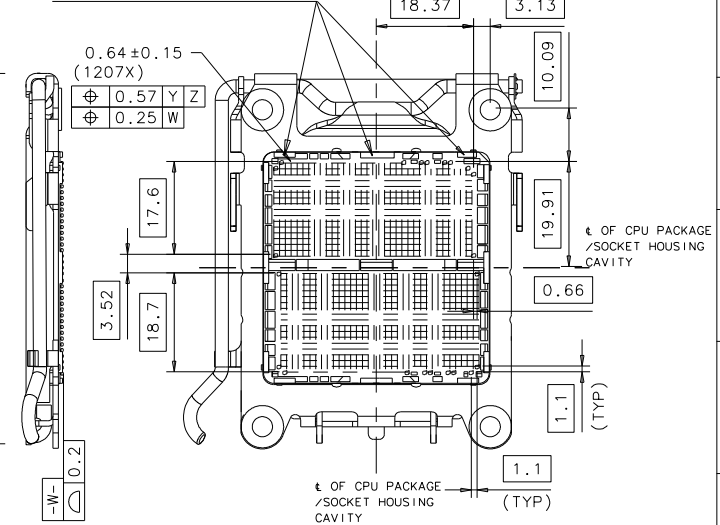


KEEP OUT HEIGHT
SCALE 1:2



6. (73.5)
7. (66.0)
8. (57.9)
9. (55.0±0.25)
10. (21.5)
11. (43)
12. (6.8)
13. (36.8)
14. (71.0±0.25)
15. (60)
16. (70.0)
17. (14.6)
18. (64.1)
19. (31.6)
20. (3.6)
21. (71.0±0.25)
22. (9.5)
23. (55.0±0.25)
24. (1.62^{+0.10}/_{-0.08})
25. (8.0)
26. (PnP AREA)
27. (3.80)
28. (0.25 W Y Z)
29. (0.2)
30. (0.64±0.15 (1207X))
31. (0.57 Y Z)
32. (0.25 W)
33. (18.37)
34. (3.13)
35. (10.09)
36. (17.6)
37. (19.91)
38. (0.66)
39. (3.52)
40. (18.7)
41. (1.1)
42. (1.1 (TYP))
43. (1.1 (TYP))

S/O HEIGHT = 0.53±0.05



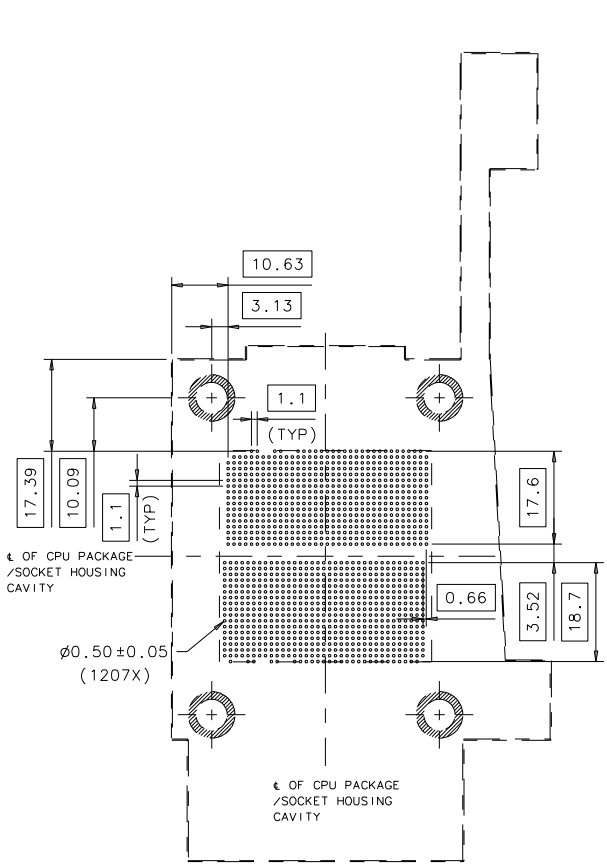
X. ±	X. ° ± 1°	UNITS	mm	NAME (INTENDED USE)	FOXCONN
.X ± 0.20	.X ° ±	MAT'L		SOCKET C32	HON HAI PRECISION IND. CO., LTD. TAIPEI, TAIWAN, R.O.C.
.XX ± 0.10	.XX ° ±	FINISH		PART NO. (INTENDED USE) PE12072B-3742-01F	TITLE: CUSTOMER DRAWING FOR SOCKET C32
.XXX ±	.XXX ° ±	Q'TY		APPD: Dickie Huang	DWG NO.: 351-0000-1046
THESE DRAWINGS AND SPECIFICATIONS ARE THE PROPERTY OF HON HAI PRECISION IND. CO., LTD. AND SHALL NOT BE REPRODUCED, COPIED OR USED IN ANY MANNER WITHOUT THE PRIOR WRITTEN CONSENT OF HON HAI PRECISION IND. CO., LTD.				CHKD: Bill Her	SCALE SHEET REV. 1/1 1/3 F
				DR: Bruce Lee 03/07'12	

IDEAS GENERATED DRAWING, DO NOT CHANGE BY HAND.

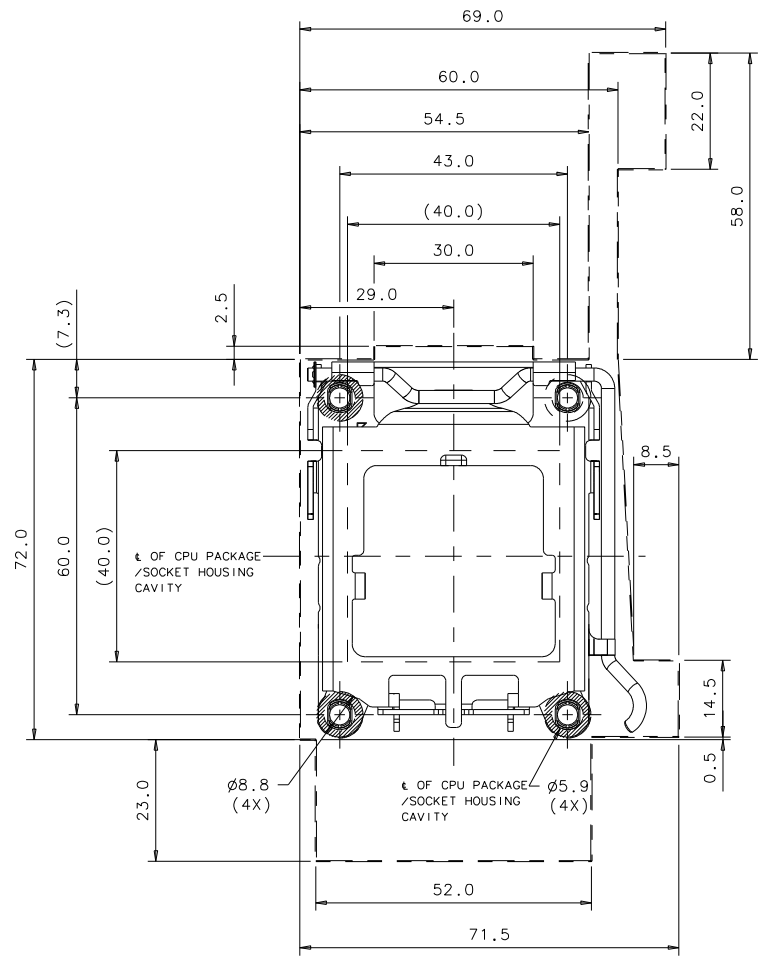
REV.	ECN. NO.	APPD.

A
B
C
D
E

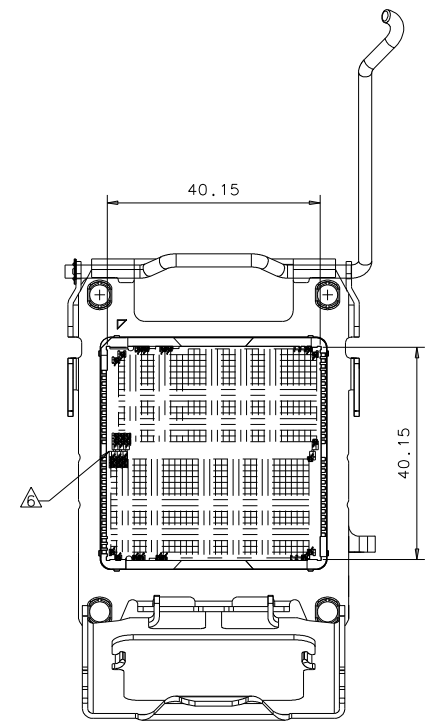
A
B
C
D
E



RECOMMENDED PCB PAD LAYOUT



RECOMMENDED PCB KEEPOUT

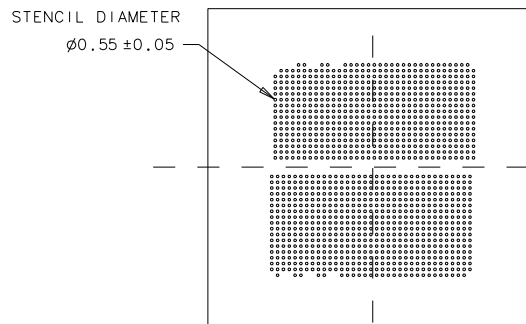


CONTACT ARRANGEMENT

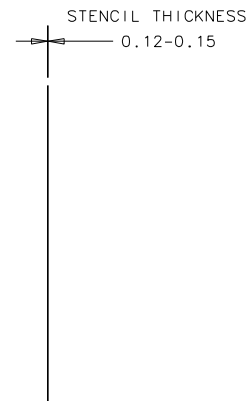
X. ±	X. ° ±	UNITS	mm	NAME (INTENDED USE)	FOXCONN HON HAI PRECISION IND. CO., LTD. TAIPEI, TAIWAN, R.O.C.
.X ± 0.20	.X ° ±	MAT'L		SOCKET C32	
.XX ± 0.10	.XX ° ±	FINISH		PART NO. (INTENDED USE)	TITLE: CUSTOMER DRAWING FOR SOCKET C32
.XXX ±	.XXX ° ±				PE12072B-3742-01F
THESE DRAWINGS AND SPECIFICATIONS ARE THE PROPERTY OF HON HAI PRECISION IND. CO., LTD. AND SHALL NOT BE REPRODUCED, COPIED OR USED IN ANY MANNER WITHOUT THE PRIOR WRITTEN CONSENT OF HON HAI PRECISION IND. CO., LTD.				APPD: Dickie Huang	DWG NO.: 351-0000-1046
				CHKD: Bill Her	SCALE SHEET REV.
				DR: Bruce Lee 03/07'12	1/1 2/3 F

IDEAS GENERATED DRAWING, DO NOT CHANGE BY HAND.

REV.	ECN. NO.	APPD.



RECOMMENDED STENCIL



REFERENCE SMT SOLDER BALL TEMPERATURE PROFILE

- 1.SOAK TIME: 60-90 SEC BETWEEN 150~218 DEGREE
- 2.TIME ABOVE LIQUIDUS: 40-120 SEC ABOVE 218 DEGREE
- 3.PEAK TEMP.: 230-250 DEGREE
- 4.TEMPERATURE SLOPE:
 - A.RAMP-UP RATE: 3 DEGREE/SEC MAX
 - B.RAMP-DOWN RATE: 3 DEGREE/SEC MAX
- 5.RECOMMENDED Sn/Ag/Cu TYPE SOLDER PASTE: KESTER R907 (USE NO-CLEAN FLUX ONLY)

X. ±	X. ° ±	UNITS mm	NAME (INTENDED USE)	FOXCONN HON HAI PRECISION IND. CO., LTD. TAIPEI, TAIWAN, R.O.C.						
.X ± 0.20	.X ° ±	MAT'L	SOCKET C32							
.XX ± 0.10	.XX ° ±	FINISH	PART NO. (INTENDED USE)	TITLE: CUSTOMER DRAWING FOR SOCKET C32						
.XXX ±	.XXX ° ±		PE12072B-3742-01F	DWG NO.:	351-0000-1046					
THESE DRAWINGS AND SPECIFICATIONS ARE THE PROPERTY OF HON HAI PRECISION IND. CO., LTD. AND SHALL NOT BE REPRODUCED, COPIED OR USED IN ANY MANNER WITHOUT THE PRIOR WRITTEN CONSENT OF HON HAI PRECISION IND. CO., LTD.			APPD: Dickie Huang	<table border="1"> <tr> <td>SCALE</td> <td>SHEET</td> <td>REV.</td> </tr> <tr> <td>1/1</td> <td>3/3</td> <td>F</td> </tr> </table>	SCALE	SHEET	REV.	1/1	3/3	F
			SCALE		SHEET	REV.				
			1/1		3/3	F				
Q'TY	CHKD: Bill Her									
	DR: Bruce Lee 03/07'12									