

Datasheet

Vela IF310

Version 0.1

PRELIMINARY

Revision History

Version	Date	Notes	Contributors	Approver
1.0	25 Oct 2025	Preliminary release	Jacky Kuo	

PRELIMINARY

Contents

1	Scope.....	6
2	General Description	6
3	Features Summary	7
4	Specifications	8
5	Frequency Reference	9
6	Block Diagram.....	10
7	Electrical Characteristics	11
7.1	Absolute Maximum Ratings	11
7.2	Recommended Operating Conditions.....	11
7.3	General DC Electrical Characteristics	11
8	RF Characteristics.....	12
8.1	Bluetooth Radio Characteristics.....	12
8.2	Transmitter and Receiver Current Consumption.....	13
9	Host Interface Specifications	14
9.1	High-Speed UART Specifications	14
9.2	PCM Interface.....	14
10	Power-up sequence and timing.....	16
11	Module Mechanical and PCB Footprint.....	16
11.1	Integrated Antenna Variant Mechanical Definition	16
11.2	MHF4 Connector Variant Mechanical Definition	17
11.3	Trace Pin Variant Mechanical Definition	17
11.4	Module PCB Footprint	18
12	Module Pin Definition.....	19
13	Reference Schematic Design.....	22
14	Flashing Firmware – EZ Serial or HCI Firmware	23
15	RF Layout Design Guidelines	24
15.1	General Consideration	24
15.2	Layout Recommendations for Integrated Antenna Variant	24
16	Application Note for Surface Mount Modules	25
16.1	Introduction	25
16.2	Module Packaging Configuration.....	25
16.3	Module Shipping	29
16.4	Labeling	30
16.5	Required Storage Conditions	31
16.5.1	Prior to Opening the Dry Packing	31
16.5.2	After Opening the Dry Packing	31
16.5.3	Temporary Storage Requirements after Opening	31
16.6	Baking Conditions.....	31

16.7	Surface Mount Conditions	32
16.7.1	Soldering	32
16.7.2	Cautions When Removing the SIP from the Platform for RMA.....	33
16.7.3	Precautions for Use.....	33
17	Reliability Test.....	34
17.1	Climatic And Dynamic Reliability Test	34
17.2	Reliability MTBF Prediction	35
18	Regulatory	36
18.1	Certified Antennas for the Vela IF310	36
19	Ordering Information	37
19.1	General Comments.....	37
20	Bluetooth Qualification Process	38
20.1	Overview	38
20.2	Scope	38
20.3	Qualification Steps When Referencing multiple existing designs, (unmodified) - Option 2a in the QPRDv3.....	38
20.4	Example Design Combinations.....	40
20.5	Qualify More Products.....	40
21	453-00171 Integrated Chip Antenna Performance	41
21.1	Summary of Antenna Performance	41
21.2	2.4GHz Radiated Performance and Peak Gain	41
22	Additional Information	44

Tables

Table 1: Product ordering information	6
Table 2: Vela IF310 series wireless module features	7
Table 3: Vela IF310 Specifications.....	8
Table 22: Climatic and Dynamic Reliability Test Results for Vela IF310 Modules.....	34
Table 23: MTBF Predictions for Vela IF310 Modules.....	35
Table 24: Vela IF310 Certifications	36
Table 25: Certified Antennas for Vela IF310 Modules.....	36
Table 26: Vela IF310 Ordering Part Numbers.....	37

1 Scope

This document describes the key hardware aspects of the Ezurio Vela IF310 Series wireless modules providing high-speed 4-wire UART interface for Bluetooth® / Bluetooth® LE connections. This document is intended to assist device manufacturers and related parties with the integration of this radio into their host devices. Data in this document is drawn from several sources and includes information found in the Infineon CYW55310 data sheet issued on February 21, 2023, along with other documents provided by Infineon.

Note: The information in this document is subject to change. Please contact Ezurio to obtain the most recent version of this document.



2 General Description

Built on Infineon’s AIROC™ CYW55310, the Vela IF310 brings together Bluetooth Classic (BR/EDR) and the full Bluetooth 6.0 LE feature set—including LE Audio with LC3, Isochronous Channels, Auracast, LE Coded & 2 MPHY and Advertising Extensions—so you can refresh legacy Classic designs and embrace the latest LE Audio opportunities with one module.

A 192 MHz ARM® Cortex-M33, integrated audio interfaces, up to +10 dBm output power and a very flexible HCI UART interface for a variety of hosted/hostless SW architecture options deliver a low-risk, fast-to-market platform for demanding medical or industrial audio and data applications.

Engineered for high-reliability environments, the Vela IF310 is the answer to connectivity challenges where failure is not an option. Whether it’s minimizing downtime in clinical settings or ensuring interference-resistant audio in industrial spaces, this module is built to perform. Its rugged -40 °C to +85 °C operation, robust security features including TrustZone® and CryptoCell-312, and versatile footprint options reflect Ezurio’s commitment to dependable, application-ready solutions. Combined with our personal, hands-on support through every stage of development, the Vela IF310 doesn’t just deliver technology—it delivers peace of mind.

Table 1: Product ordering information

Part	Description
453-00390R	Module, Vela IF310, Integrated Antenna, Tape and Reel
453-00390C	Module, Vela IF310, Integrated Antenna, Cut Tape
453-00391R	Module, Vela IF310, MHF4, Tape and Reel
453-00391C	Module, Vela IF310, MHF4, Cut Tape
453-00392R	Module, Vela IF310, Trace Pin, Tape and Reel
453-00392C	Module, Vela IF310, Trace Pin, Cut Tape
453-00390-K1	Development Kit, Module, Vela IF310, Integrated Antenna
453-00391-K1	Development Kit, Module, Vela IF310, MHF4

3 Features Summary

The Ezurio Vela IF310 series device features are described in [Table 2](#).

Table 2: Vela IF310 series wireless module features

Feature	Description
Variants	<ul style="list-style-type: none"> • Integrated Ignion antenna variant • MHF4 connector variant • Trace Pin variant
Bluetooth subsystem	<ul style="list-style-type: none"> • Complies with Bluetooth® core specification version 6.0 • Includes support for basic data rate (BR), EDR 2 Mbps and 3 Mbps, extended synchronous connection-oriented • Bluetooth® LE 1 Mbps, 2 Mbps and LE Long Range (LE-LR) • Up to 10dBm EIRP output power • Excellent receiver sensitivity (-108 dBm for Bluetooth® LE-LR-S8 125 Kbps)
Microcontroller (MCU)	<ul style="list-style-type: none"> • Powerful Arm® Cortex®-M33 core • Bluetooth® stack in ROM allowing standalone operation without any external MCU • 2-MB on-chip ROM memory for program storage and boot ROM • 768-KB on-chip RAM memory for data scratch-pad and patch RAM code • AES-128 security system
Peripherals	<ul style="list-style-type: none"> • Up to 22 GPIOs • TDM, I2S, PCM and UART interfaces • I2C¹ and Wi-Fi coexistence¹ supports • HFP codec interface controller: <ul style="list-style-type: none"> ▪ Supported by PCM and I2S transports and bidirectional operations. ▪ Supported by PCM <ul style="list-style-type: none"> ➢ Sample rates 8k for NBS and 16k for wideband speech (WBS) supported. ➢ Sample width is limited to 16-bits. ➢ Synchronization clock width of 1 or 3 (short or long). ➢ Bit clocks of 128k, 256k, 512k, 1024k and 2048k. ▪ Support by I2S <ul style="list-style-type: none"> ➢ Support bit clocks of 256k (NBS) and 512k (WBS). • A2DP codec controller: <ul style="list-style-type: none"> ▪ Supported by I2S transport in a single direction, either in or our but not both. ▪ Two channels, left and right. Mono is not support. ▪ Sample rate: 44.1k or 48k. ▪ Sample width is limited to 16-bits. ▪ Supports bit clocks of 32 times the sample rate, 1.4112M (44.1k) or 1.536M (48k) and not adjustable.
Power management	<ul style="list-style-type: none"> • On-chip power-on reset (POR) • Integrated buck (DC-DC) and low drop out (LDO) regulators • On-chip software-controlled power management unit • On-chip 32 kHz low power oscillator (LPO) with optional external 32 kHz crystal oscillator support

Note¹, The I²C interface and the Wi-Fi coexistence pins are multiplexed with the BT_GPIO pins. In the default firmware configuration, both functions cannot be supported.

4 Specifications

Table 3: Vela IF310 Specifications

Feature	Description						
Physical Interface	84-pin LGA package (Including 4 thermal ground pads under the package)						
Bluetooth/BLE Interface	Host Controller Interface (HCI) using high speed UART						
Main Chip	Infineon CYW55310IUBGT 143-pin WLGA package (Including 4 thermal ground pads under the package)						
Input Voltage Requirements	3.3V Typ., 3.0V Min., 4.8V Max.						
I/O Signalling Voltage	Set to 1.8V only, by the power domains connected to VDDIO						
Operating Temperature	-40° to +85°C (-40° to +185°F)						
Operating Humidity	Less than 85% RH (non-condensing)						
Storage Temperature	-40° to +125°C (-40° to +257°F)						
Storage Humidity	Less than 60% RH (non-condensing)						
MSL (Moisture Sensitivity Level)	4 (module), N/A (DVK)						
Maximum Electrostatic Discharge	4kV Indirect application (In compliance with EN 301489)						
Size - mm	All variants: 16mm x 12mm x 1.9 mm						
Weight - g (oz.)	0.0003g (Integrated Antenna) 0.0001g (MHF4)						
Bluetooth Media	Frequency Hopping Spread Spectrum (FHSS)						
Bluetooth Standards	Bluetooth Core 6.0 (at point of launch)						
Bluetooth Data Rates Supported	1, 2, 3 Mbps, 500 Kbps, 125 Kbps						
Bluetooth Modulation	GFSK @ 1 Mbps (BR) $\pi/4$ -DQPSK @ 2 Mbps (EDR) 8-DPSK @ 3 Mbps (EDR) GFSK @ LE-1 Mbps, LE-2 Mbps, LE-LR-500 Kbps, LE-LR-125 Kbps						
Regulatory Certifications	FCC, IC, CE, UKCA, RCM, Japan, and Korea, Bluetooth SIG						
Compliance	<table border="0"> <tr> <td>ACMA AS/NZS 2772.2:2016 Amd 1:2018 AS/NZS 4268:2017+Amd 1:2021</td> <td>FCC FCC Part 15, Subpart B, Class B 47 CFR FCC Part 2.1091 47 CFR FCC Part 15.247</td> </tr> <tr> <td>CE EN 62479:2010 EN 50663:2017 EN 300 328 V2.2.2 EN 62368-1</td> <td>Japan Article 2 Paragraph 1 Item 19</td> </tr> <tr> <td>EMC ICES-003 Issue 7, Class B EN 301 489-1 V2.2.3 EN 301 489-17 V3.2.4</td> <td>Korea TBD</td> </tr> </table>	ACMA AS/NZS 2772.2:2016 Amd 1:2018 AS/NZS 4268:2017+Amd 1:2021	FCC FCC Part 15, Subpart B, Class B 47 CFR FCC Part 2.1091 47 CFR FCC Part 15.247	CE EN 62479:2010 EN 50663:2017 EN 300 328 V2.2.2 EN 62368-1	Japan Article 2 Paragraph 1 Item 19	EMC ICES-003 Issue 7, Class B EN 301 489-1 V2.2.3 EN 301 489-17 V3.2.4	Korea TBD
ACMA AS/NZS 2772.2:2016 Amd 1:2018 AS/NZS 4268:2017+Amd 1:2021	FCC FCC Part 15, Subpart B, Class B 47 CFR FCC Part 2.1091 47 CFR FCC Part 15.247						
CE EN 62479:2010 EN 50663:2017 EN 300 328 V2.2.2 EN 62368-1	Japan Article 2 Paragraph 1 Item 19						
EMC ICES-003 Issue 7, Class B EN 301 489-1 V2.2.3 EN 301 489-17 V3.2.4	Korea TBD						
Certifications	Bluetooth® SIG Qualification						
Warranty	One Year Warranty						

All specifications are subject to change without notice

5 Frequency Reference

The Vela IF310 module **requires** a 32.768 KHz reference oscillator for the sleep clock. An external 32.768 KHz precision oscillator which meets the requirements listed in **Table 4 must be used**.

Table 4: External 32.768 KHz sleep clock specification

Parameter	LPO clock	Unit
Nominal input frequency	32.768	KHz
Frequency accuracy	±250	ppm
Duty cycle	30-70	%
Input signal amplitude	200-3300	mV, p-p
Signal type	Square-wave or sine-wave	-
Input impedance	> 100 K	Ω
	< 5	pF
Clock jitter (during initial startup)	< 10000	ppm

6 Block Diagram

The Vela IF310 uses Infineon's CYW55310 chipset, which is highly integrated. The module provides three types of RF connectivity options: RF connector type (, PCB printed antenna type, and Trace pin type , to accommodate different application needs. In addition, its simplified external circuitry helps reduce overall product size. The module only requires two power inputs, 3.3V and 1.8V, a 32.768 kHz signal, and a "BT_REG_ON" control signal. Vela IF310 provides a wide range of comprehensive interfaces to meet customer application requirements and achieves a highly integrated module in an ultra-compact size (12 mm x 16 mm).

Figure 1 shows the block diagram of the Vela IF310 module.

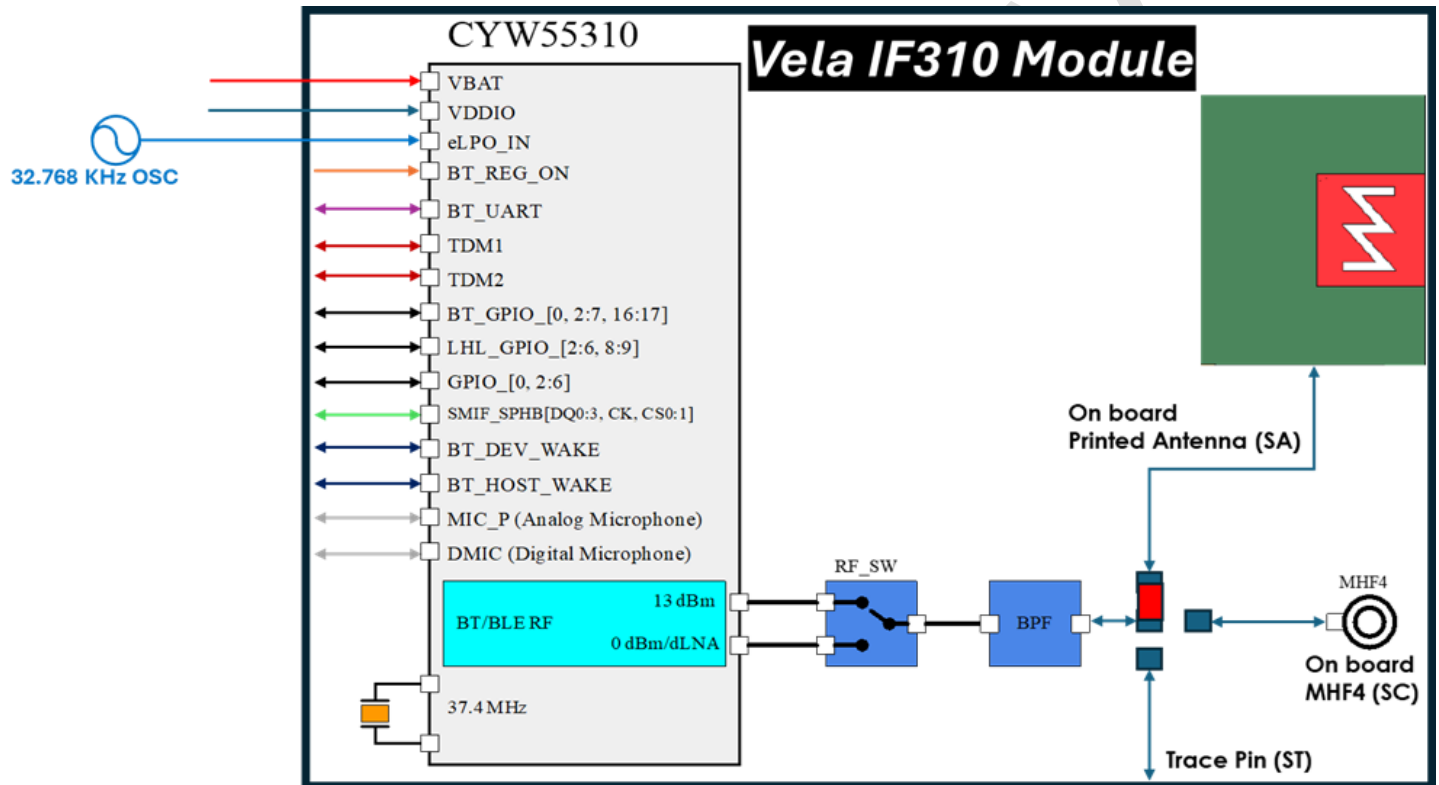


Figure 1: Vela IF310 Module Block diagram

7 Electrical Characteristics

7.1 Absolute Maximum Ratings

Table 5 summarizes the absolute maximum ratings, and Table 6 lists the recommended operating conditions for the Vela IF310 series wireless module. Absolute maximum ratings are the values beyond which permanent damage to the device may occur. Operating the device outside the specified maximum ratings or recommended operating conditions may cause damage and void the warranty.

Note: Maximum rating for signals follows the supply domain of the signals.

Table 5: Absolute maximum ratings

Symbol	Parameter	Minimum	Typical	Maximum	Unit
VBAT	Power supply for Internal Regulators	-0.5		6.0	V
VDDIO	DC supply voltage for digital I/O	-0.5		2.2	V

7.2 Recommended Operating Conditions

Table 6: Recommended operating conditions

Symbol (Domain)	Parameter	Min	Typ	Max	Unit
VBAT	Power supply for Internal Regulators	3.0 ²	3.3	4.8	V
VDDIO	DC supply voltage for digital I/O	1.71	1.8	1.89	V
T-ambient	Ambient temperature	-40	25	85	°C

Note²: IF310 is functional across this range of voltage. Optimal RF performance specified in the data sheet, however, is guaranteed only for 3.13 V < VBAT < 3.5 V.

7.3 General DC Electrical Characteristics

Table 7 list the general DC electrical characteristics over recommended operating conditions (unless otherwise specified).

Table 7: General DC electrical characteristics (VDDIO supply voltage operating range is defined in Table 6)

Symbol	Parameter	Min	Typ	Max	Unit
Digital I/O pins ³	Input high voltage (VIH)	0.65 x VDDIO	–	–	V
	Input low voltage (VIL)	–	–	0.35 x VDDIO	
	Output high voltage @ 2 mA (VOH)	VDDIO-0.4V	–	–	
	Output low voltage @ 2 mA (VOL)	–	–	0.45	
BT_REG_ON pins	Input high voltage	1.2	–	VBAT	V
	Input low voltage	–	–	0.3	

Note³: Programmable 2 mA to 16 mA drive strength. Default is 10 mA.

8 RF Characteristics

8.1 Bluetooth Radio Characteristics

Table 8 through Table 11 describe the Bluetooth Basic Rate (BR) / EDR / BLE transmitter performance and receiver performance, and current consumption conditions at 25°C.

Table 8: Basic Rate (BR) and EDR transmitter performance (VBAT = 3.3V, VDDIO = 1.8V)

Test Parameter	Conditions	Min	Typ	Max	Bluetooth Spec.	Unit
Frequency Range	–	2402	–	2480	$2400 \leq f \leq 2480$	MHz
TX Output Power ⁴ (Test at MHF4 connector)	BR	–	5.5 4.5 5	7.6 6.5	~ +20	dBm
	EDR 2M	–	2.5	4		
	EDR 3M	–	2.5	4		
Max EIRP	–	–	–	10	–	dBm

Table 9: Basic Rate (BR) receiver performance (VBAT = 3.3V, VDDIO = 1.8V)

Test Parameter	Conditions	Min	Typ	Max	Bluetooth Spec.	Unit
Frequency Range	–	2402	–	2480	$2400 \leq f \leq 2480$	MHz
RX Sensitivity ^{5,6}	GFSK, BER $\leq 0.1\%$, 1 Mbps	–	-91	-89.5	≤ -70	dBm
Maximum Input	–	–	–	-20	≥ -20	dBm

Table 10: Enhanced Data Rate (EDR) receiver performance (VBAT = 3.3V, VDDIO = 1.8V)

Test Parameter	Conditions	Min	Typ	Max	Bluetooth Spec.	Unit
Frequency Range	–	2402	–	2480	$2400 \leq f \leq 2480$	MHz
RX Sensitivity ^{5,6}	$\pi/4$ -DQPSK, BER $\leq 0.01\%$, 2 Mbps	–	-93.5	-92	≤ -70	dBm
	8-DPSK, BER $\leq 0.01\%$, 3 Mbps	–	-87.5	-86	≤ -70	dBm

Table 11: Bluetooth LE RF Specifications (VBAT = 3.3V, VDDIO = 1.8V)

Parameter	Conditions	Min	Typ	Max	Unit
Frequency range	–	2402	–	2480	MHz
Rx sensitivity ^{5,6}	GFSK, 30.8% PER, 1 Mbps	–	-97	-95.5	dBm
	GFSK, 30.8% PER, 2 Mbps	–	-93.5	-92	
	GFSK, 30.8% PER, 500 Kbps (S = 2)	–	-102	-100.5	
	GFSK, 30.8% PER, 125 Kbps (S = 8)	–	-107	-105.5	
TX Output Power ⁴ (Test at MHF4 connector)	1 Mbps	–	5.5 4.5 5	7.6 6.5	dBm
	2 Mbps	–	5.5 4.5 5	7.6 6.5	
	500 Kbps (S = 2)	–	5.5 4.5 5	7.6 6.5	
	125 Kbps (S = 8)	–	5.5 4.5 5	7.6 6.5	
Max EIRP	–	–	–	10	dBm

Note⁴: The Bluetooth LE TX power cannot exceed 10 dBm EIRP specification limit. The front-end losses and antenna gain/loss must be factored in so as not to exceed the limit.

Note⁵: Dirty TX is off.

Note⁶: Tolerance could be up to +/- 2.5 dB across operating temperature.

8.2 Transmitter and Receiver Current Consumption

All measured current consumption values are based on the specifications in Section 8.1:

- BR/EDR TX current consumption is measured at the “Max” output power defined in [Table 8](#).
- BR/EDR RX current consumption measurement is performed with the DUT in continuous receiving mode.
- LE and LE-LR TX current consumption is measured at the “Max” output power defined in [Table 11](#).
- LE and LE-LR RX current consumption measurement is performed with the DUT in continuous receiving mode.

Table 12: Bluetooth and Bluetooth LE current consumption

Operating Mode	Data Rate	VBAT = 3.3V	VDDIO = 1.8V	Unit
Transmitter	DH5	19.31	0.1	mA
	2DH5	19.67	0.1	
	3DH5	19.67	0.1	
	LE 1 Mbps	17.36	0.1	
	LE 2 Mbps	15.34	0.1	
	LE-LR 500 Kbps	15.14	0.1	
	LE-LR 125 Kbps	20.14	0.1	
Receiver	DH5	9.26	0.1	mA
	2DH5	9.34	0.1	
	3DH5	9.35	0.1	
	LE 1 Mbps	9.91	0.1	
	LE 2 Mbps	10.25	0.1	
	LE-LR 500 Kbps	10.89	0.1	
	LE-LR 125 Kbps	10.89	0.1	

Note: Current consumption is measured at average of the TX-on time

9 Host Interface Specifications

9.1 High-Speed UART Specifications

The Vela IF310 UART is a standard 4-wire interface (RX, TX, RTS, and CTS) with adjustable baud rates from 9600 bps to 4.0 Mbps. The UART supports the Bluetooth® HCI UART specification. The default baud rate is 115.2 Kbaud.

Table 13: UART timing specifications

Reference	Characteristics	Min	Typ	Max	Units
1	Delay time, BT_UART_CTS_N low to BT_UART_TXD valid	–	–	1.5	
2	Setup time, BT_UART_CTS_N high before midpoint of stop bit	–	–	0.5	Bit periods
3	Delay time, midpoint of stop bit to BT_UART_RTS_N high	–	–	0.5	

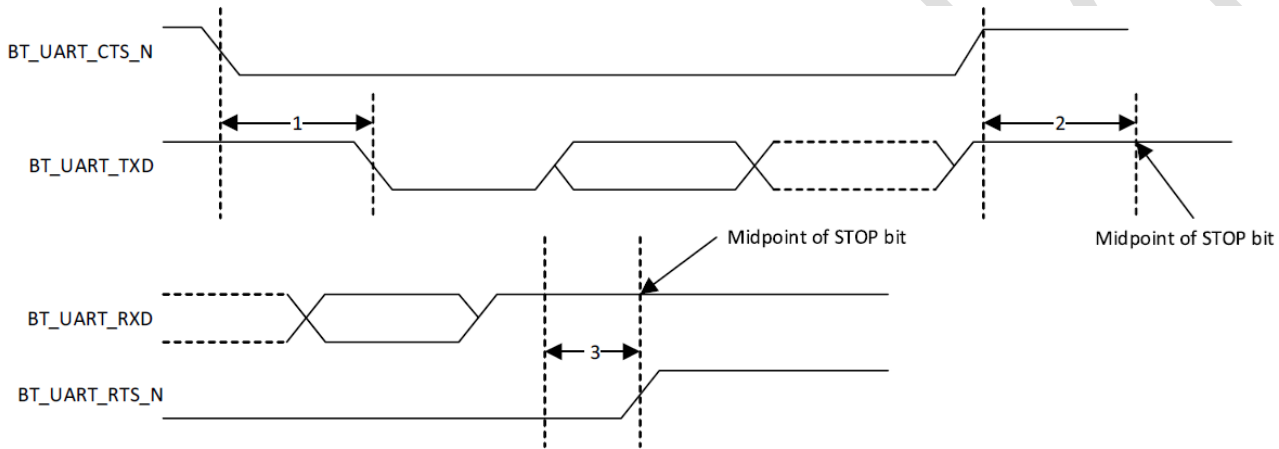


Figure 2: UART timing diagram

9.2 PCM Interface

The Vela IF310 supports two independent PCM interfaces that share the pins with the I2S interfaces. The PCM interface can connect to linear PCM codec devices in master/slave mode. In master mode, IF310 generates the BT_PCM_CLK and BT_PCM_SYNC signals, and in slave mode, these signals are provided by another master on the PCM interface and are inputs to IF310.

Figure 3 and Table 13 show the PCM timing diagram and specifications in the Master mode, while Figure 4 and Table 14 show the PCM timing and specifications in the Slave mode.

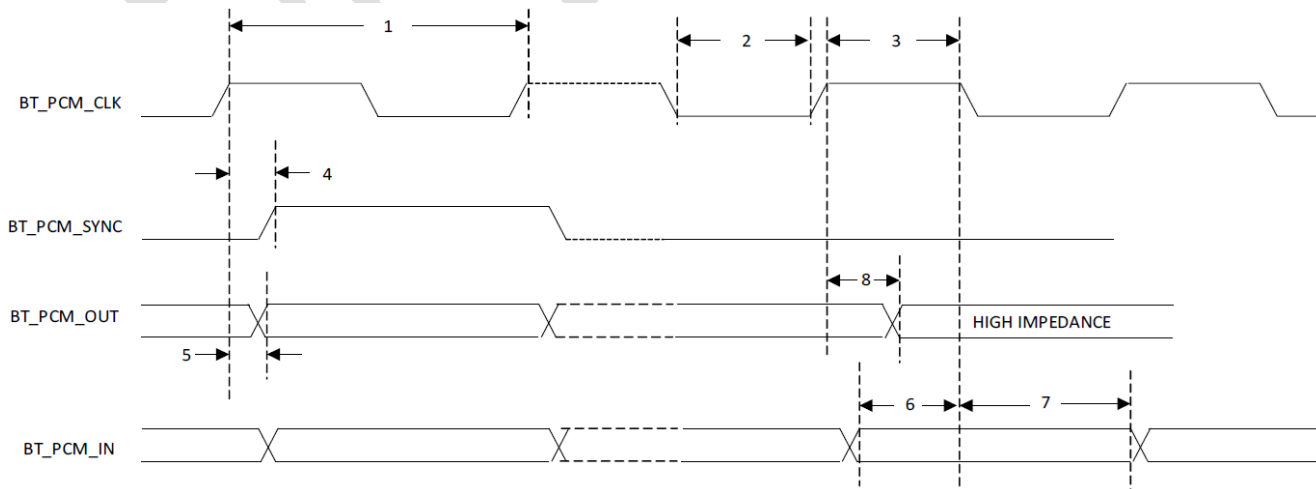


Figure 3: PCM timing diagram (Short frame sync, master mode)

Table 14: PCM interface timing specifications (Short frame sync, master mode)

Reference	Characteristics	Min	Typ	Max	Units
1	PCM bit clock frequency	—		12.0	MHz
2	PCM bit clock LOW	41		—	ns
3	PCM bit clock HIGH	41		—	
4	BT_PCM_SYNC delay	0		25.0	
5	BT_PCM_OUT delay	0	—	25.0	
6	BT_PCM_IN setup	8.0		—	
7	BT_PCM_IN hold	8.0		—	
8	Delay from rising edge of BT_PCM_CLK during last bit period to BT_PCM_OUT becoming high impedance	0		25.0	

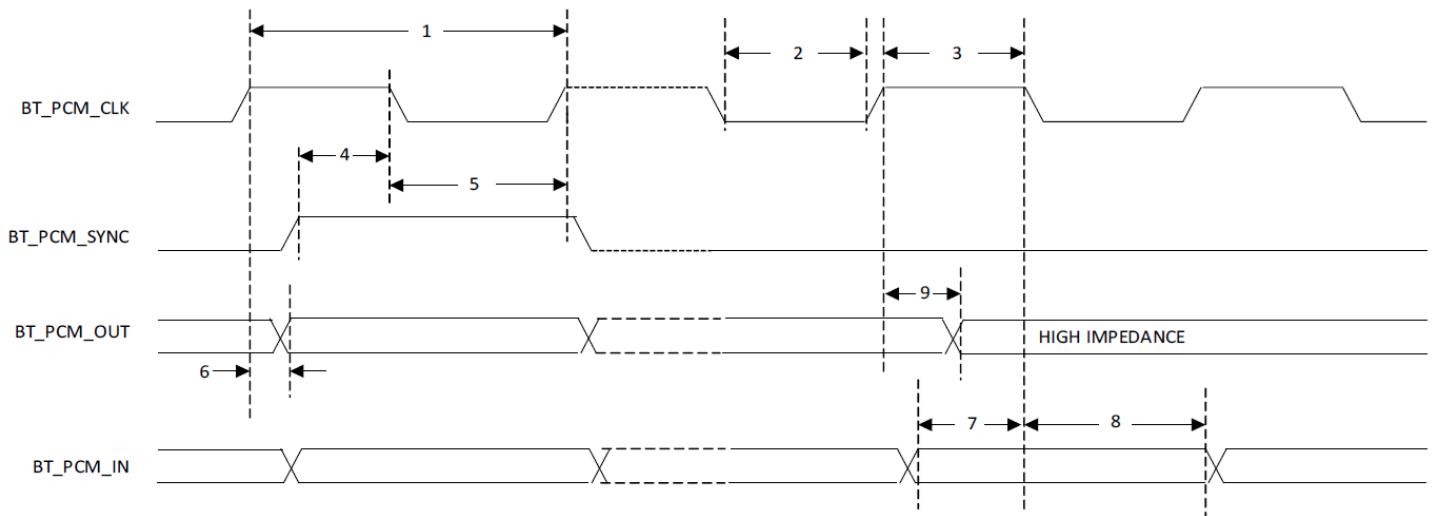


Figure 2: PCM timing diagram (Short frame sync, slave mode)

Table 15: PCM interface timing specifications (Short frame sync, slave mode)

Reference	Characteristics	Min	Typ	Max	Units
1	PCM bit clock frequency	—		12.0	MHz
2	PCM bit clock LOW	41.0		—	ns
3	PCM bit clock HIGH	41.1		—	
4	BT_PCM_SYNC setup	8.0		—	
5	BT_PCM_SYNC hold	8.0		—	
6	BT_PCM_OUT delay	0	—	25.0	
7	BT_PCM_IN setup	8.0		—	
8	BT_PCM_IN hold	8.0		—	
9	Delay from rising edge of BT_PCM_CLK during last bit period to BT_PCM_OUT becoming high impedance	0		25.0	

17.2 Reliability MTBF Prediction

Table 5: MTBF Predictions for Vela IF310 Modules

Ezurio Part Number	Environment	Standard	Test Result 45 °C (Hours)
453-00390R	Ground, Fixed, Uncontrolled	Telcordia Issue 3	
453-00390C			
453-00391R			
453-00391C			
453-00392R			
453-00392C			
453-00390R	Mobile, Fixed, Uncontrolled	Telcordia Issue 3	
453-00390C			
453-00391R			
453-00391C			
453-00392R			
453-00392C			

Ezurio Part Number	Environment	Standard	Test Result 85 °C (Hours)
453-00390R	Ground, Fixed, Uncontrolled	Telcordia Issue 3	
453-00390C			
453-00391R			
453-00391C			
453-00392R			
453-00392C			
453-00390R	Mobile, Fixed, Uncontrolled	Telcordia Issue 3	
453-00390C			
453-00391R			
453-00391C			
453-00392R			
453-00392C			

18 Regulatory

Full regulatory information on the Vela IF310, including the Regulatory Information Guide, grants, and test reports are available on the [Vela IF310 product page](#) (coming soon).

The Vela IF310 holds current certifications in the following countries:

Table 6: Vela IF310 Certifications

Country/Region	Regulatory ID
USA (FCC)	SQG-VELAIF310
EU (ETSI)	N/A (No ID Number Required)
UKCA	N/A (No ID Number Required)
Canada (ISED)	3147A-VELAIF310
Japan (MIC)	201-250863
Australia (RCM)	N/A
New Zealand (RCM)	N/A
Korea	R-C-EZU1-VELAIF310

18.1 Certified Antennas for the Vela IF310

Table 7: Certified Antennas for Vela IF310 Modules

Model	MPN	Manufacturer	Type	Connector	Peak Gain (2400 – 2500 MHz)
NanoBlue	EBL2400A1-10MH4L	Ezurio (Laird Connectivity)	PCB Antenna	IPEX MHF4	2 dBi
FlexPIFA	001-0022	Ezurio (Laird Connectivity)	Planar Inverted-F Type	IPEX MHF4	2 dBi
EDA-8709-2G4C1-B27-CY	EDA-8709-2G4C1-B27-CY (Ezurio Part#0600-00057)	MAG.LAYERS	Dipole	IPEX MHF4	2.32 dBi
mFlexPIFA	EFA2400A3S-10MH4L	Ezurio (Laird Connectivity)	Planar Inverted-F Type	IPEX MHF4	2 dBi
i-FlexPIFA	EFG2401A3S-10MH4L	Ezurio (Laird Connectivity)	PIFA	IPEX MHF4	2 dBi
PCB Trace	NN00-101	IGNION	Printed Antenna	N/A	3.2 dBi

19 Ordering Information

Table 8: Vela IF310 Ordering Part Numbers

Part	Description
453-00390R	Module, Vela IF310, Integrated Antenna, Tape and Reel
453-00390C	Module, Vela IF310, Integrated Antenna, Cut Tape
453-00391R	Module, Vela IF310, MHF4, Tape and Reel
453-00391C	Module, Vela IF310, MHF4, Cut Tape
453-00392R	Module, Vela IF310, Trace Pin, Tape and Reel
453-00392C	Module, Vela IF310, Trace Pin, Cut Tape
453-00390-K1	Development Kit, Module, Vela IF310, Integrated Antenna
453-00391-K1	Development Kit, Module, Vela IF310, MHF4

19.1 General Comments

This is a preliminary datasheet. Please check with Ezurio for the latest information before commencing a design. If in doubt, ask. For additional information visit [Vela IF310 product page](#).

20 Bluetooth Qualification Process

20.1 Overview

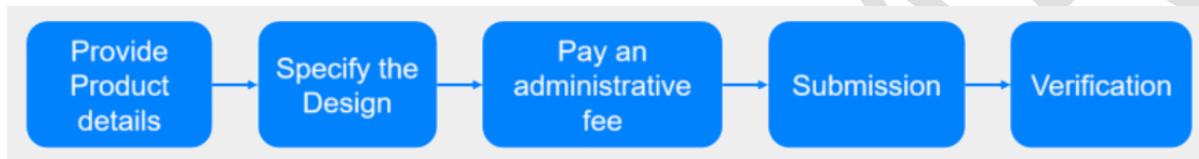
The Bluetooth Qualification Process promotes global product interoperability and reinforces the strength of the Bluetooth® brand and ecosystem to the benefit of all Bluetooth SIG members. The Bluetooth Qualification Process helps member companies ensure their products that incorporate Bluetooth technology comply with the Bluetooth Patent & Copyright License Agreement and the Bluetooth Trademark License Agreement (collectively, the Bluetooth License Agreement) and Bluetooth Specifications.

The Bluetooth Qualification Process is defined by the [Qualification Program Reference Document \(QPRD\) v3](#).

To demonstrate that a product complies with the Bluetooth Specification(s), each member must for each of its products:

- Identify the product, the design included in the product, the Bluetooth Specifications that the design implements, and the features of each implemented specification
- Complete the Bluetooth Qualification Process by submitting the required documentation for the product under a user account belonging to your company

The Bluetooth Qualification Process consists of the phases shown below:



To complete the Qualification Process the company developing a Bluetooth End Product shall be a member of the Bluetooth SIG. To start the application please use the following link: [Apply for Adopter Membership](#)

20.2 Scope

This guide is intended to provide guidance on the Bluetooth Qualification Process for End Products that reference multiple existing designs, that have not been modified, (refer to Section 3.2.2.1 of the [Qualification Program Reference Document v3](#)).

For a Product that includes a new Design created by combining two or more unmodified designs that have DNs or QDIDs into one of the permitted combinations in Table 3.1 of the QPRDv3, a Member must also provide the following information:

- DNs or QDIDs for Designs included in the new Design
- The desired Core Configuration of the new Design (if applicable, see Table 3.1 below)
- The active TCRL Package version used for checking the applicable Core Configuration (including transport compatibility) and evaluating test requirements

Any included Design must not implement any Layers using withdrawn specification(s).

When creating a new Design using Option 2a, the Inter-Layer Dependency (ILD) between Layers included in the Design will be checked based on the latest TCRL Package version used among the included Designs.

For the purposes of this document, it is assumed that the member is combining unmodified Core-Controller Configuration and Core-Host Configuration designs, to complete a Core-Complete Configuration.

20.3 Qualification Steps When Referencing multiple existing designs, (unmodified) – Option 2a in the QPRDv3

For this qualification option, follow these steps:

1. To start a listing, go to: <https://qualification.bluetooth.com/>
2. Select **Start the Bluetooth Qualification Process**.
3. Product Details to be entered:
 - Project Name (this can be the product name or the Bluetooth Design name).
 - Product Description
 - Model Number

- Product Publication Date (the product publication date may not be later than 90 days after submission)
 - Product Website (optional)
 - Internal Visibility (this will define if the product will be visible to other users prior to publication)
 - If you have multiple End Products to list then you can select 'Import Multiple Products', firstly downloading and completing the template, then by 'Upload Product List'. This will populate Qualification Workspace with all your products.
4. Specify the Design:
- Do you include any existing Design(s) in your Product? Answer Yes, I do.
 - Enter the multiple DNs or QDIDs used in your, (for Option 2a two or more DNs or QDIDs must be referenced)
 - Select 'I'm finished entering DN's
 - Once the DNs or QDIDs are selected they will appear on the left-hand side, indicating the layers covered by the design (should show Core-Controller and Core Host Layers covered).
 - What do you want to do next? Answer, 'Combine unmodified Designs'.
 - The Qualification Workspace Tool will indicate that a new Design will be created and what type of Core-Complete configuration is selected.
 - An active TCRL will be selected for the design.
 - Perform the Consistency Check, which should result in no inconsistencies
 - If there are any inconsistencies these will need to be resolved before proceeding
 - Save and go to Test Plan and Documentation
5. Test Plan and Documentation
- a. As no modifications have been made to the combined designs the tool should report the following message:
'No test plan has been generated for your new Design. Test declarations and test reports do not need to be submitted. You can continue to the next step.'
 - b. Save and go to Product Qualification fee
6. Product Qualification Fee:
- It's important to make sure a Prepaid Product Qualification fee is available as it is required at this stage to complete the Qualification Process.
 - Prepaid Product Qualification Fee's will appear in the available list so select one for the listing.
 - If one is not available select 'Pay Product Qualification Fee', payment can be done immediately via credit card, or you can pay via Invoice. Payment via credit will release the number immediately, if paying via invoice the number will not be released until the invoice is paid.
 - Once you have selected the Prepaid Qualification Fee, select 'Save and go to Submission'
7. Submission:
- Some automatic checks occur to ensure all submission requirements are complete.
 - To complete the listing any errors must be corrected
 - Once you have confirmed all design information is correct, tick all of the three check boxes and add your name to the signature page.
 - Now select 'Complete the Submission'.
 - You will be asked a final time to confirm you want to proceed with the submission, select 'Complete the Submission'.
 - Qualification Workspace will confirm the submission has been submitted. The Bluetooth SIG will email confirmation once the submission has been accepted, (normally this takes 1 working day).
8. Download Product and Design Details (SDoC):
- a. You can now download a copy of the confirmed listing from the design listing page and save a copy in your Compliance Folder

For further information, please refer to the following webpage:

<https://www.bluetooth.com/develop-with-bluetooth/qualification-listing/>

20.4 Example Design Combinations

The following gives an example of a design possible under option 2a:

Ezurio Controller Subsystem + AIROC™ Bluetooth Host Software Stack (Ezurio Vela IF310-based design)

Design Name	Owner	Declaration ID	QD ID	Link to listing on the SIG website
Vela IF310	Ezurio			
AIROC™ Bluetooth Host Software Stack	Infineon	D065385	223736	https://qualification.bluetooth.com/ListingDetails/194929

20.5 Qualify More Products

If you develop further products based on the same design in the future, it is possible to add them free of charge. The new product must not modify the existing design i.e add ICS functionality, otherwise a new design listing will be required.

To add more products to your design, select 'Manage Submitted Products' in the [Getting Started](#) page, Actions, Qualify More Products. The tool will take you through the updating process.

21 453-00171 Integrated Printed Antenna Performance

The following are details and plots of the measured radiation performance of the antenna on the Vela IF310 module with integrated printed antenna (part numbers 453-00171R and 453-00171C).

21.1 Summary of Antenna Performance

Technical Feature	2400 MHz – 2500 MHz
Average Efficiency	>60 %
Peak Gain	3.2
VSWR	< 3:1
Radiation Pattern	Omnidirectional
Polarization	Linear
Weight (approx.)	0 g.
Temperature	-40 to +125°C
Impedance	50 Ω
Dimensions (L x W x H)	2.5 mm x 2.4 mm x 0.6 mm

Note: The result is measured with Ezurio DVK part # 453-00171-K1.

21.2 2.4GHz Radiated Performance and Peak Gain

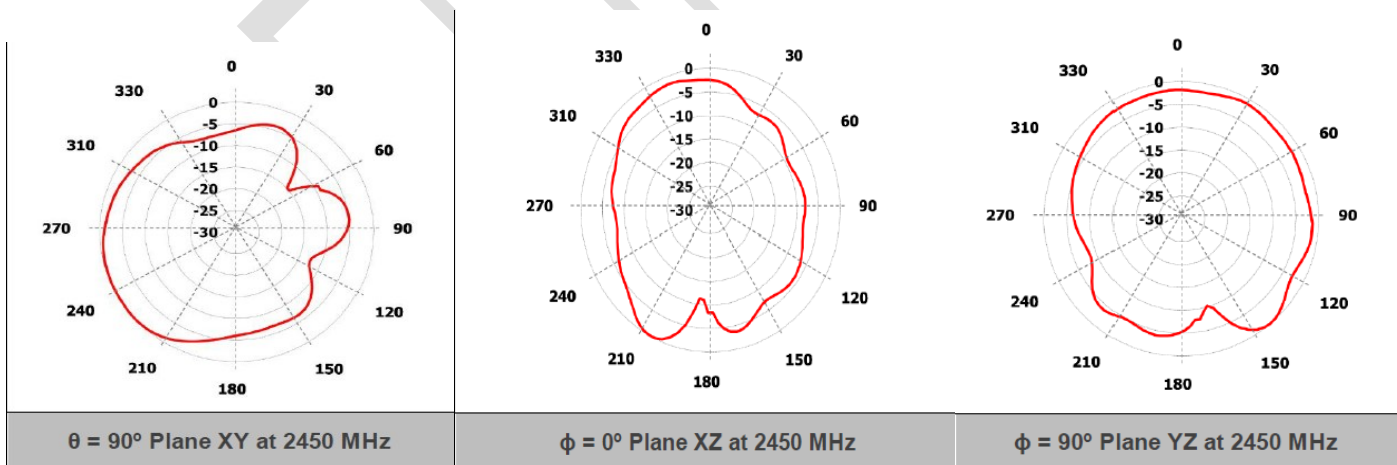
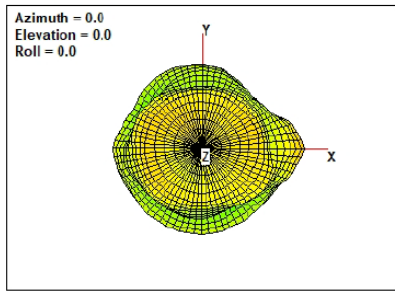
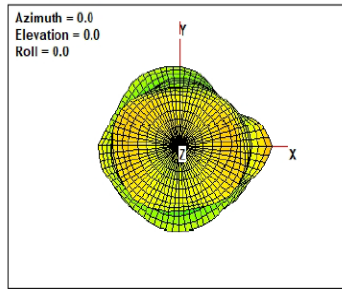


Figure 16: 2450 MHz radiation pattern

2402MHz



2440MHz



2480MHz

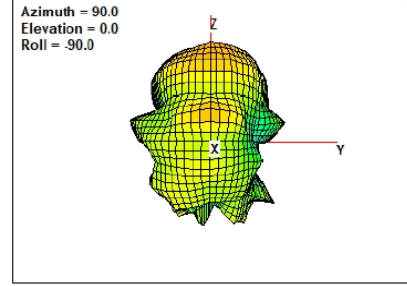
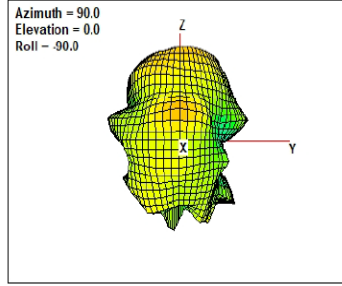
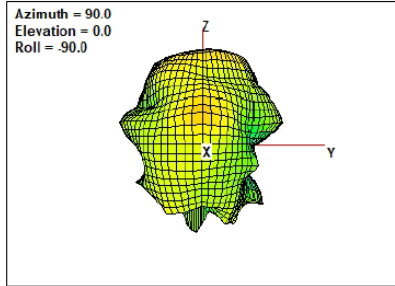
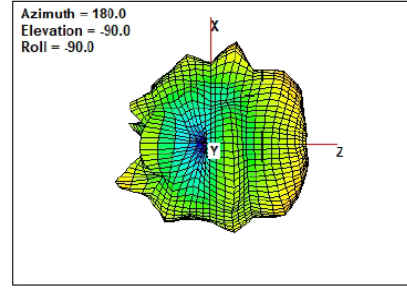
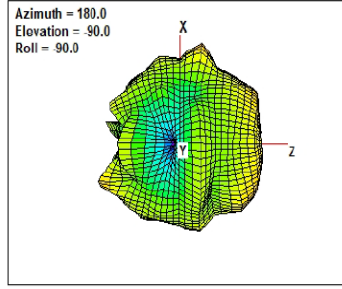
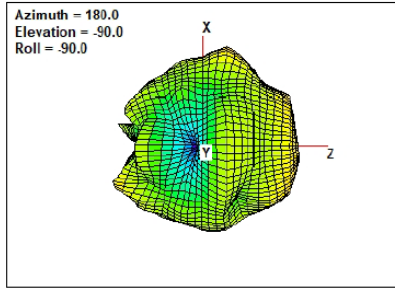
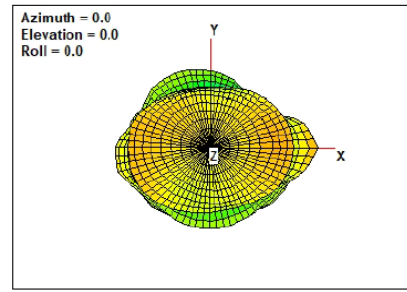


Figure 32: 2402 MHz 3D pattern

Figure 33: 2440 MHz 3D pattern

Figure 34: 2480 MHz 3D pattern

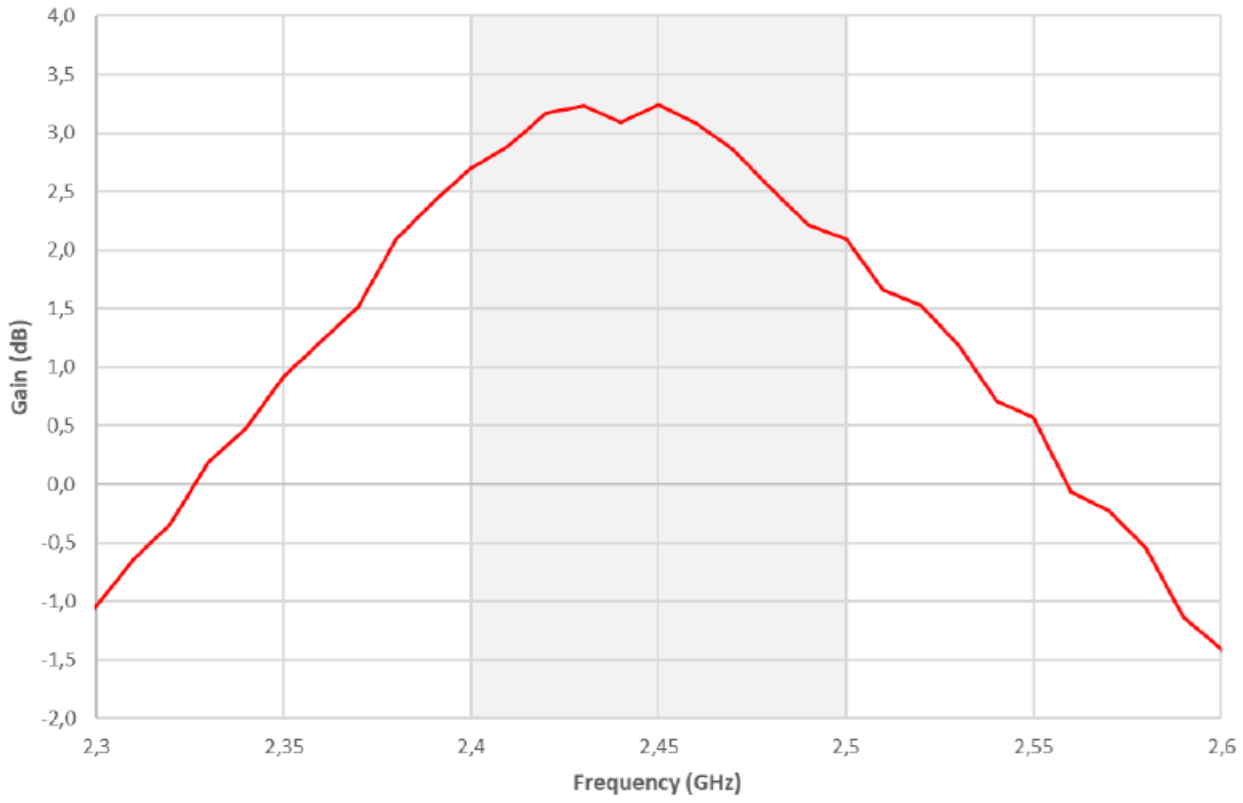


Figure 17: Peak Gain

PRELIMINARY

22 Additional Information

Please contact your local sales representative or our support team for further assistance:

Headquarters	Ezurio 50 S. Main St. Suite 1100 Akron, OH 44308 USA
Website	http://www.ezurio.com
Technical Support	http://www.ezurio.com/resources/support
Sales Contact	http://www.ezurio.com/contact

Note: Information contained in this document is subject to change.

Ezurio's products are subject to standard [Terms & Conditions](#).

© Copyright 2025 Ezurio All Rights Reserved. Any information furnished by Ezurio and its agents is believed to be accurate but cannot be guaranteed. All specifications are subject to change without notice. Responsibility for the use and application of Ezurio materials or products rests with the end user since Ezurio and its agents cannot be aware of all potential uses. Ezurio makes no warranties as to non-infringement nor as to the fitness, merchantability, or sustainability of any Ezurio materials or products for any specific or general uses. Ezurio or any of its affiliates or agents shall not be liable for incidental or consequential damages of any kind. All Ezurio products are sold pursuant to the Ezurio Terms and Conditions of Sale in effect from time to time, a copy of which will be furnished upon request. Nothing herein provides a license under any Ezurio or any third-party intellectual property right. Ezurio and its associated logos are trademarks owned by Ezurio and/or its affiliates.