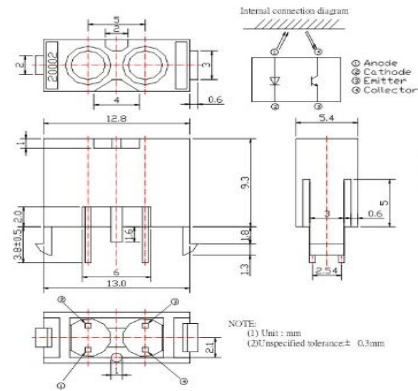


Optical Switch | Reflective Type



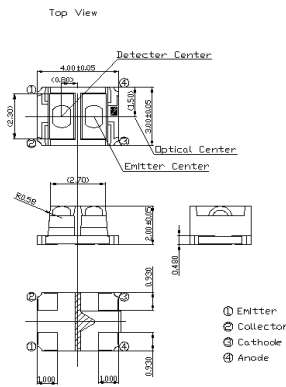
UNIT : mm



Product	Dimension (mm)	V <sub>F_Typ</sub> (V)	V <sub>F_Max</sub> (V)	V <sub>CE(SAT)_Max</sub> (V)	I <sub>C(ON)_Min</sub> (mA)	Gap Distance (mm)	I <sub>CEO_Max.</sub> (nA)
ITR20002	12.8x5.5x9.3	1.2	1.5	0.4	0.04	100	100



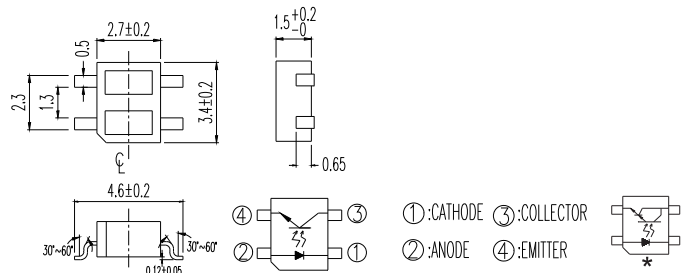
UNIT : mm



Product	Dimension (mm)	V <sub>F_Typ</sub> (V)	V <sub>F_Max</sub> (V)	V <sub>CE(SAT)_Max</sub> (V)	I <sub>C(ON)_Min</sub> (mA)	Gap Distance (mm)	I <sub>CEO_Max.</sub> (nA)
ITR1502SR40A/TR8	4.0x3.0x2.0	1.2	1.4	N/A	0.06	100	100

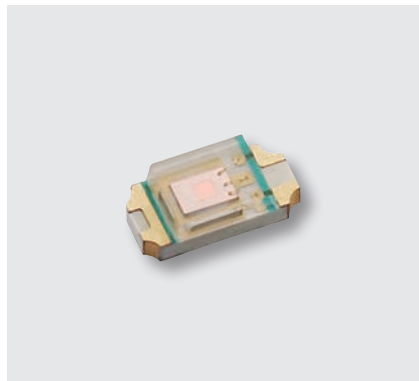


UNIT : mm

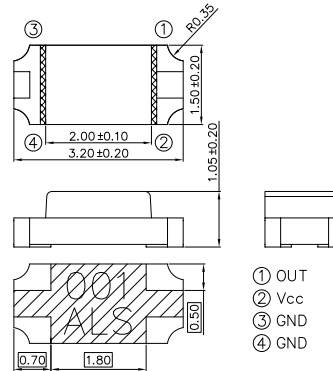


Product	Dimension (mm)	V <sub>F_Typ</sub> (V)	V <sub>F_Max</sub> (V)	V <sub>CE(SAT)_Max</sub> (V)	I <sub>C(ON)_Min</sub> (mA)	Gap Distance (mm)	I <sub>CEO_Max.</sub> (nA)
ITR8307/TR8	4.6x3.4x1.5	1.2	1.6	0.4	0.1	100	100
ITR8307/L24/TR8	4.6x3.4x1.5	1.2	1.6	1	0.5	100	100

Optical Sensors | Ambient Light Sensor | Analog



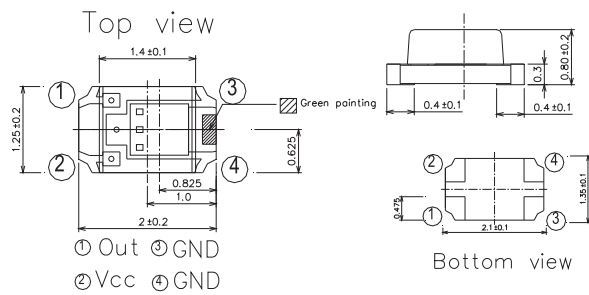
UNIT : mm



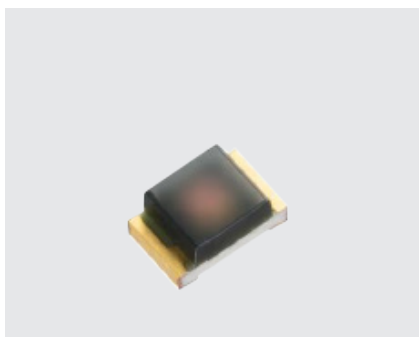
Product	Dimension (mm)	Supply Voltage, Vdd(V)	Peak Sensitivity Wavelength, λp(nm)	Photo current Ev=100lux, Iph(μA)	Max. Dark Current, ID_Max (μA)
ALS-PDIC15-21C/L230/TR8	3.2x1.5x1.1	2.5~5.5	590	36~95	0.1



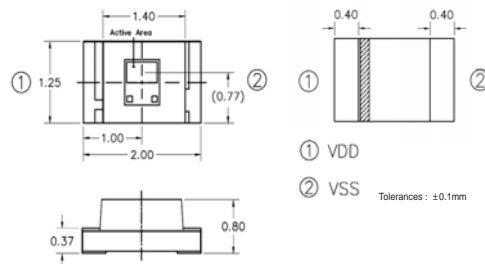
UNIT : mm



Product	Dimension (mm)	Supply Voltage, Vdd(V)	Peak Sensitivity Wavelength, λp(nm)	Photo current Ev=100lux, Iph(μA)	Max. Dark Current, ID_Max (μA)
ALS-PDIC17-55C/TR8	2x1.25x0.8	1.8~5.5	590	27~54	0.1



UNIT : mm



Product	Dimension (mm)	Supply Voltage, Vdd(V)	Peak Sensitivity Wavelength, λp(nm)	Photo current Ev=100lux, Iph(μA)	Max. Dark Current, ID_Max (μA)
ALS-PDIC17-51B/L758/TR8	2x1.25x0.8	2~5.5	570	29~55	0.03