



EVERLIGHT ELECTRONICS CO.,LTD.

DEVICE NUMBER : DLE-912-127
ECN : _____

REV : 1.2
PAGE : 1/5

1.8mm Round Subminiature "Z-Bend" Lead LEDs

PART NO. : 91-21SRC/TR10

Features :

- Package in 12mm tape on 7" diameter reels.
- Compatible with automatic placement equipment.
- Compatible with infrared and vapor phase reflow solder process.
- IC compatible.
- EIA std package.
- Mono-color type.

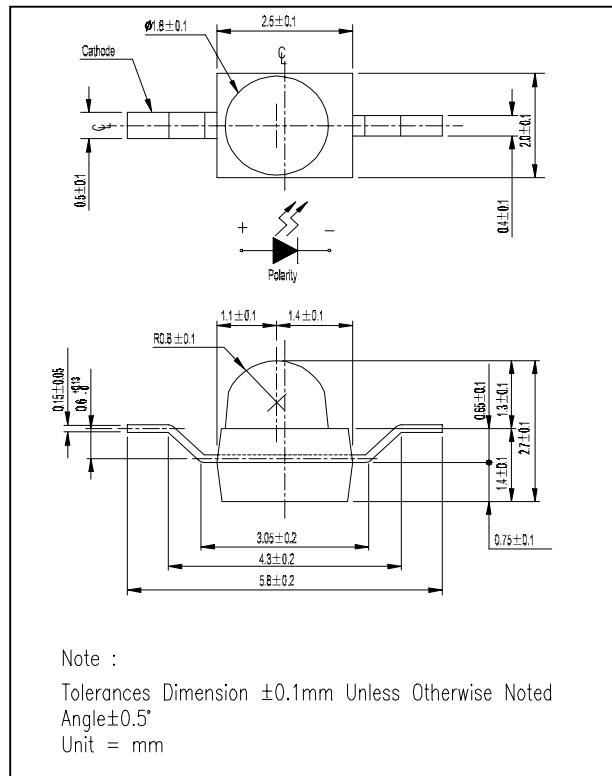
Descriptions :

- The 91-21 SMD taping is much smaller than leaded components. Thusenable smaller board size.Higher packing density. Reduced storage space and finally smaller equipment to be obtained.
- Besides, light weight makes them ideal for miniature application, etc.
- Furthermore by automation assembly machines the accuracy is anticipated.

Applications :

- Small indicator for outdoor applications.
- Flat backlight for LCD, switch and symbol.
- Indicator and backlight in office equipment.
- Indicator and backlight for battery driven equipment.
- Indicator and backlight for audio and video equipment.
- Automotive : backlighting in dashboard and switch.
- Telecommunication : indicator and backlighting in telephone and fax.
- General use.

Package Dimensions :



PART NO.	Chip		Lens Color
	Material	Emitted Color	
91-21SRC/TR10	GaAlAs	Super Red	Water Clear

OFFICE : NO. 25,Lane 76,Sec.3, Chung Yang Rd., Tucheng 236, Taipei, Taiwan, R.O.C.

TEL : 886-2-2267-2000,2267-9936

FAX : 886-2-2267-6244,22676189,22676306

<http://www.everlight.com>



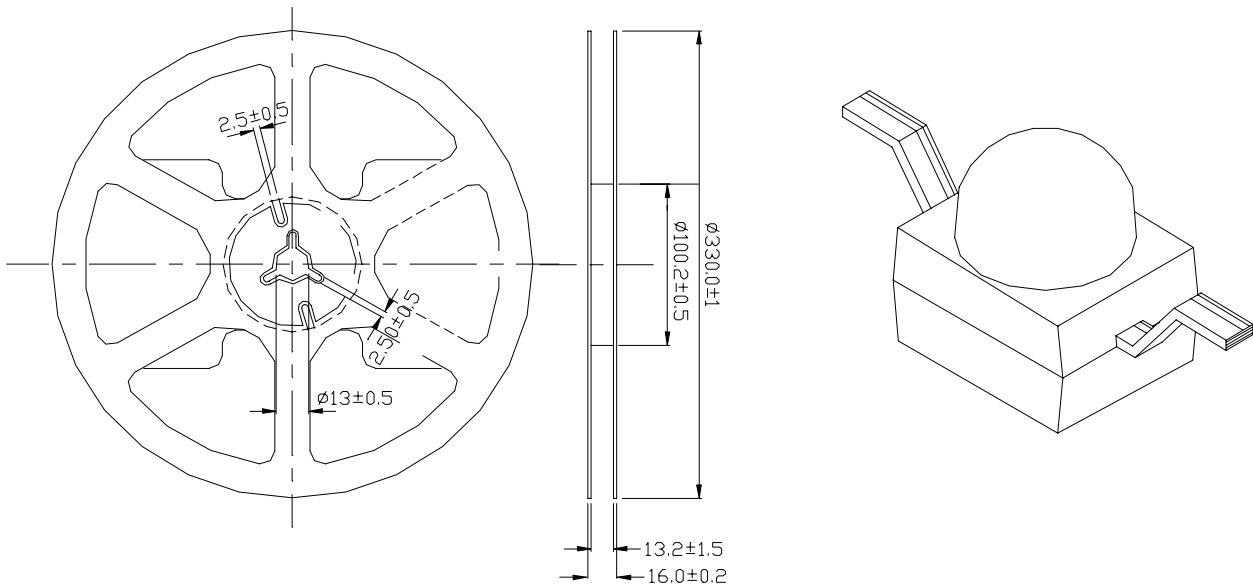
EVERLIGHT ELECTRONICS CO.,LTD.

DEVICE NUMBER : DLE-912-127 REV : 1.2
ECN : _____ PAGE : 2/5

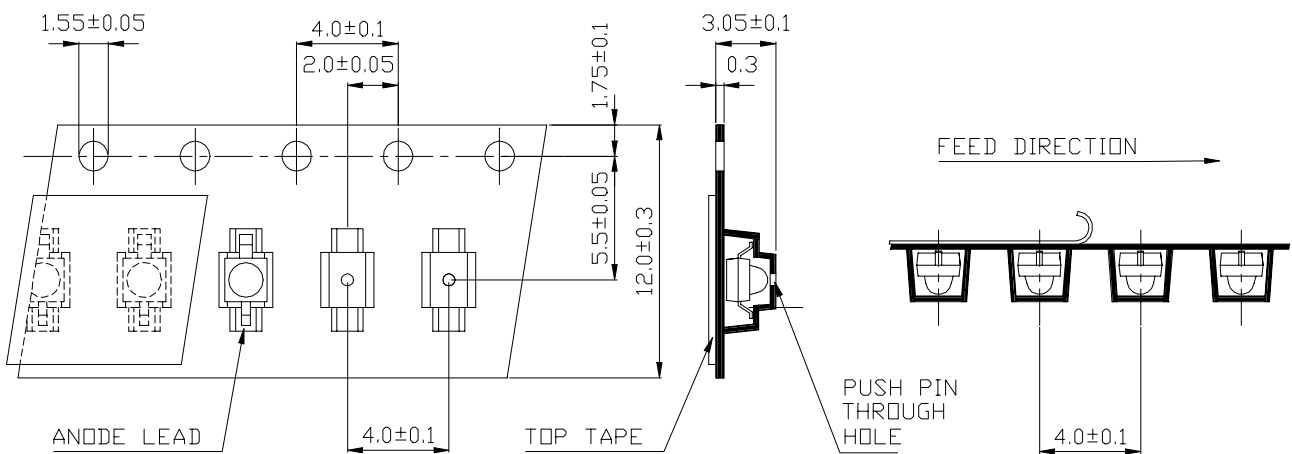
1.8mm Round Subminiature "Z-Bend" Lead LEDs

PART NO. : 91-21SRC/TR10

■ Package Dimensions



■ Loaded Quantity Per Reel 1000 Pcs/Reel



1. All dimensions are in millimeters.
2. Lead spacing is measured where the lead emerge from the package
3. Protruded resin under flange 1.5 mm (0.59") max.



EVERLIGHT ELECTRONICS CO.,LTD.

DEVICE NUMBER : DLE-912-127 REV : 1.2
ECN : _____ PAGE : 3/5

1.8mm Round Subminiature "Z-Bend" Lead LEDs

PART NO. : 91-21SRC/TR10

■ Absolute Maximum Ratings at Ta = 25°C

Parameter	Symbol	Rating	Unit
Reverse Voltage	V _R	5	V
Forward Current	I _F	40	mA
Operating Temperature	T _{opr}	-40 ~ +85	°C
Storage Temperature	T _{stg}	-40 ~ +100	°C
Soldering Temperature	T _{sol}	260 ± 5 for 5 sec	°C
Power Dissipation	P _d	110	mW
Peak Forward Current(Duty 1/10 @ 1KHZ)	I _F (Peak)	180	mA

■ Electronic Optical Characteristics :

Parameter	Symbol	MIN.	TYP.	MAX.	Unit	Condition
Luminous Intensity	I _v	70	110	----	mcd	I _f = 20mA
Viewing Angle	2θ 1/2	----	25	----	deg	
Peak Wavelength	λ _p	----	660	----	nm	
Dominant Wavelength	λ _d	----	643	----	nm	
Spectrum Radiation Bandwidth	△λ	----	20	----	nm	
Forward Voltage	V _F	1.5	1.7	2.4	V	
Reverse Current	I _R	----	----	10	μA	V _r =5V



EVERLIGHT ELECTRONICS CO.,LTD.

DEVICE NUMBER : DLE-912-127

REV : 1.2

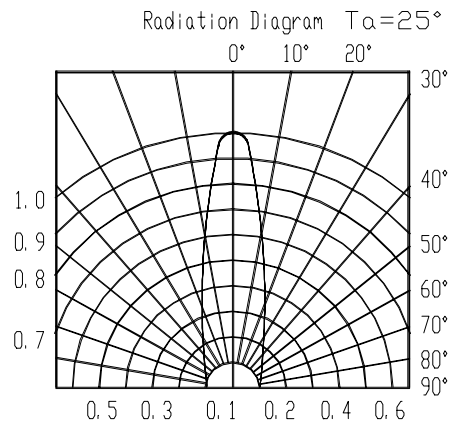
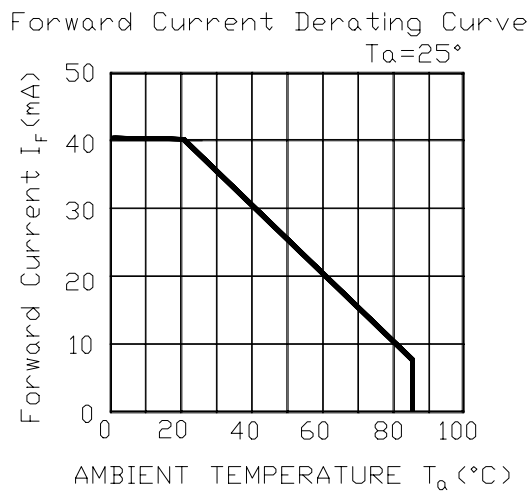
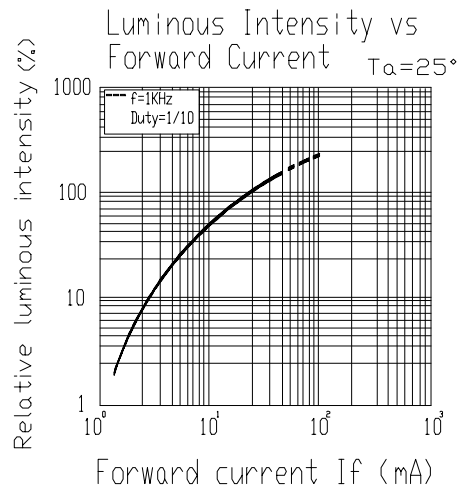
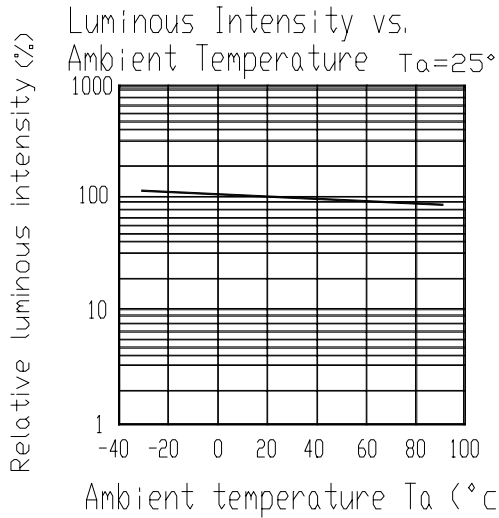
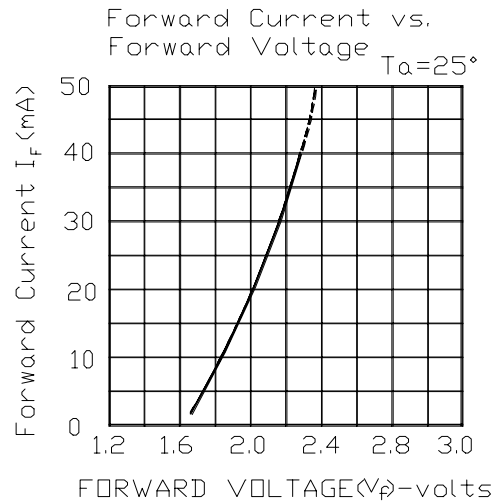
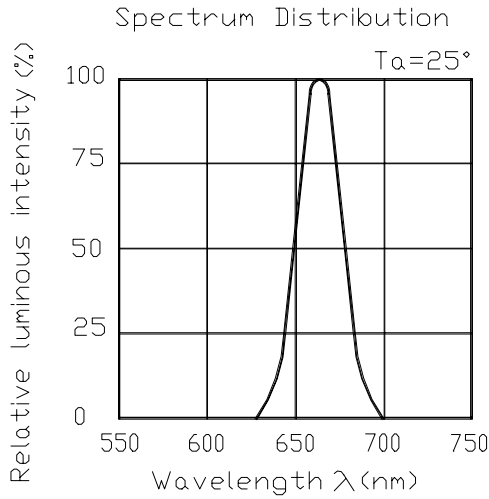
ECN : _____

PAGE : 4/5

1.8mm Round Subminiature "Z-Bend" Lead LEDs

PART NO. : 91-21SRC/TR10

Typical Electro-Optical Characteristic Curves





EVERLIGHT ELECTRONICS CO.,LTD.

DEVICE NUMBER : DLE-912-127 REV : 1.2
ECN : _____ PAGE : 5/5

1.8mm Round Subminiature "Z-Bend" Lead LEDs

PART NO. : 91-21SRC/TR10

■ Reliability Test Items And Conditions

NO.	Item	Test Conditions	Test Hours/ Cycle	Sample Size	Ac/Re
1	Solder Heat	TEMP. : 260°C ± 5 °C	5 SEC.	76 PCS	0/1
2	Temperature Cycle	H : +85°C 30 min. § 5 min. L : -55°C 30 min.	50 CYCLES	76 PCS	0/1
3	Thermal Shock	H : +100°C 5 min. § 10 sec. L : -10°C 30 min.	50 CYCLES	76 PCS	0/1
4	High Temperature Storage	TEMP. : +100°C	1000 HR.	76 PCS	0/1
5	Low Temperature Storage	TEMP. : -55°C	1000 HR.	76 PCS	0/1
6	DC Operating Life	IF = 20 mA	1000 HR.	76 PCS	0/1
7	High Temperature / High Humidity	85°C / 85% R H	1000 HR.	76 PCS	0/1