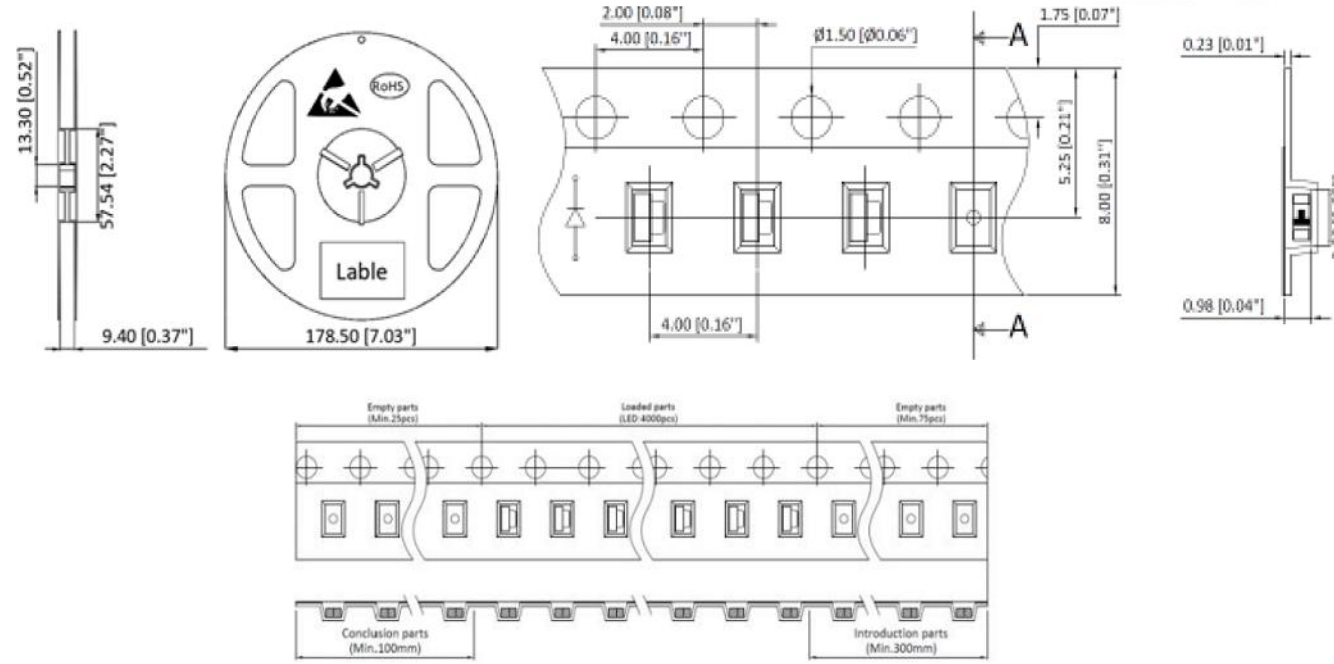


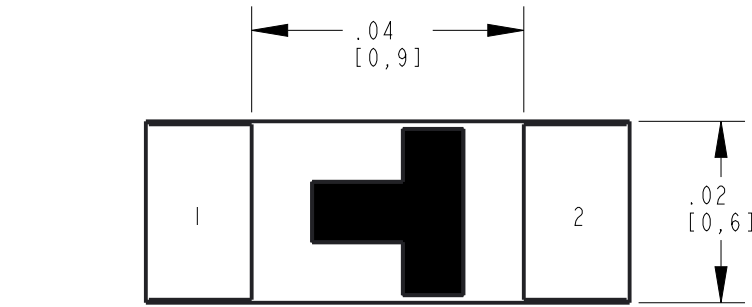
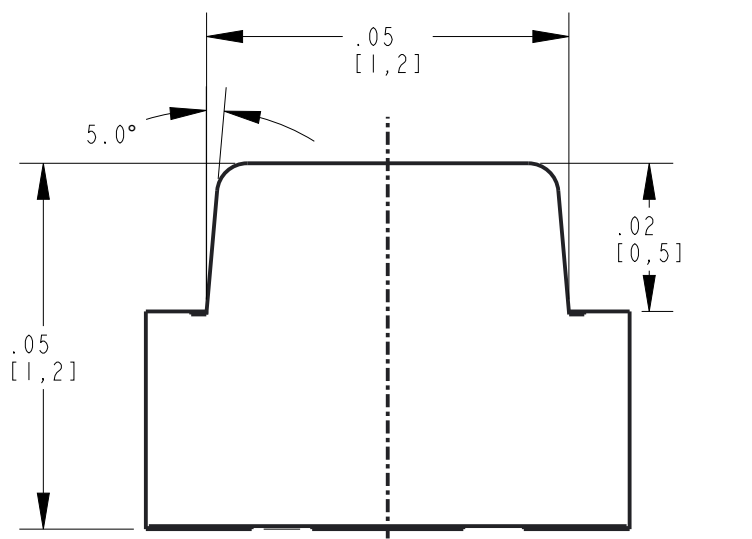
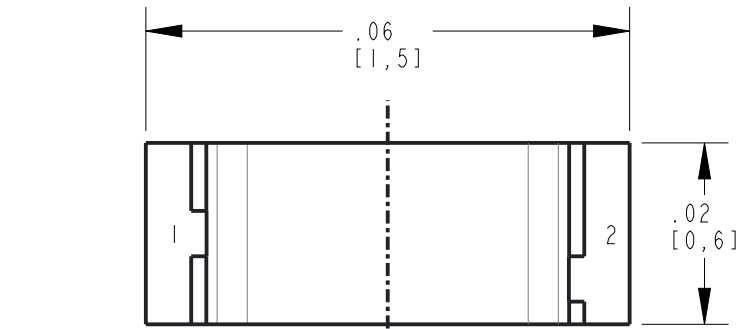
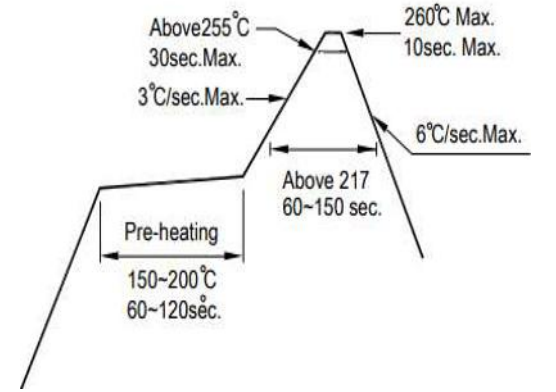
| REV | ECN NO | REVISIONS | DRN | CKD | APP | QA | CM | DATE |
|-----|--------|-------------|-----|-----|-----|----|----|---------|
| A | 122626 | NEW RELEASE | LD | CS | | | | 10-8-24 |

TAPE & REEL PACKAGING

TOLERANCE = ±.004"



SOLDER TEMPERATURE PROFILE



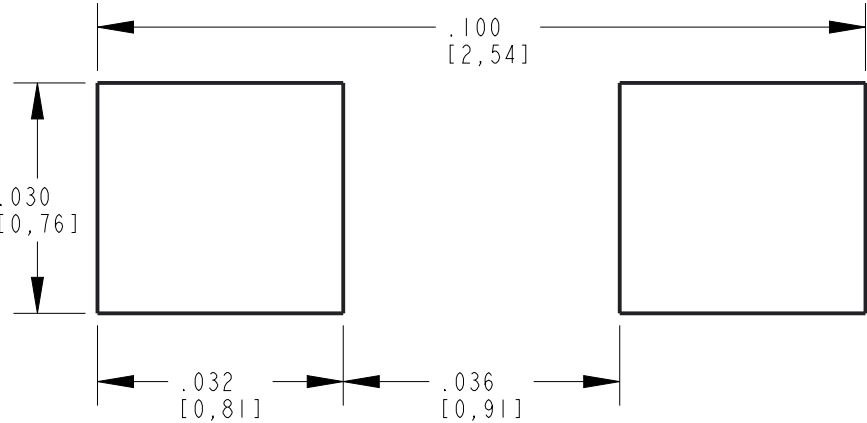
| DIALIGHT PART NUMBER | COLOR | LUMINOUS INTENSITY @ I _F = 20 mA (mcd) | | | FORWARD VOLTAGE @ I _F = 20 mA (V) | | | REVERSE CURRENT (µA) | DOM. WAVELENGTH @ I _F = 20 mA (nm) | | | VIEWING ANGLE (DEG) |
|----------------------|------------|---|-----|-----|--|-----|-----|----------------------|---|-----|-----|---------------------|
| | | MIN | TYP | MAX | MIN | TYP | MAX | | MIN | TYP | MAX | |
| 598-8D11-127F | RED | 66 | — | 190 | 1.8 | — | 2.4 | 10 | 630 | — | 640 | 120 |
| 598-8D21-127F | RED-ORANGE | 86 | — | 321 | 1.8 | — | 2.4 | 10 | 618 | — | 630 | |
| 598-8D31-127F | ORANGE | 112 | — | 321 | 1.8 | — | 2.4 | 10 | 600 | — | 610 | |
| 598-8D41-127F | YELLOW | 86 | — | 321 | 1.8 | — | 2.4 | 10 | 584 | — | 594 | |
| 598-8D61-127F | YEL-GRN | 30 | — | 112 | 1.8 | — | 2.4 | 10 | 566 | — | 576 | |
| 598-8D81-127F | TRUE GRN | 320 | — | 917 | 2.8 | — | 3.6 | 10 | 520 | — | 530 | |
| 598-8D91-127F | BLUE | 86 | — | 321 | 2.8 | — | 3.6 | 10 | 464 | — | 474 | |

| | COLOR | | | | | | | | UNITS |
|--|------------|------------|------------|------------|------------|------------|------------|-------------|-------|
| | RED | RED-ORANGE | ORANGE | YELLOW | YEL-GREEN | TRUE=GRN | BLUE | | |
| POWER DISSIPATION | 72 | 72 | 60 | 72 | 60 | 108 | 108 | mW | |
| DC FORWARD CURRENT | 30 | 30 | 25 | 30 | 25 | 30 | 30 | mA | |
| PEAK FORWARD CURRENT (1/10 DUTY CYCLE, 0.1 ms PULSE) | 125 | 125 | 125 | 125 | 125 | 125 | 125 | mA | |
| DERATE LINEARLY FROM 25°C | .33 | .33 | .33 | .33 | .33 | .33 | .33 | mA/°C | |
| REVERSE VOLTAGE | 5 | | | | | | | | V |
| OPERATING TEMPERATURE | -40 TO +85 | -40 TO +85 | -40 TO +80 | -40 TO +80 | -40 TO +80 | -40 TO +80 | -40 TO +80 | -20 to +85 | °C |
| STORAGE TEMPERATURE | -40 TO +85 | -40 TO +85 | -40 TO +85 | -40 TO +85 | -40 TO +85 | -40 TO +85 | -40 TO +85 | -30 to +100 | °C |
| SOLDERING TEMPERATURE, FOR 10 SEC | 260 | | | | | | | | °C |



ATTENTION:
OBSERVE PRECAUTIONS FOR
HANDLING ELECTROSTATIC
SENSITIVE DEVICES

RECOMMENDED PAD LAYOUT



NOTES:

- PARTS ARE TO BE SUPPLIED IN 8mm CARRIER TAPE ON 7" REEL 4000 PCS PER REEL.
- PIN NUMBERS ARE FOR REFERENCE ONLY, DESIGNATION NON-EXISTENT ON PART.
- THIS ASSEMBLY CONTAINS ELECTROSTATIC DISCHARGE SENSITIVE DEVICES (ESDS). MAINTAIN ALL PRECAUTIONARY MEASURES DURING ASSEMBLY, HANDLING AND STORAGE IN ACCORDANCE WITH IPC-A-610.
- THIS PRODUCT IS RoHS COMPLIANT. EACH BAG IS TO BE MARKED WITH RoHS COMPLIANT LABEL OR EQUIVALENT MARKINGS. LED MUST BE Pb FREE.
- MOISTURE SENSITIVITY LEVEL IS 3.

| | | |
|---|--------------------------|-----|
| THIS DRAWING AND THE CONTENTS HEREIN ARE CONFIDENTIAL AND THE SOLE PROPERTY OF DIALIGHT CORP. REPRODUCTION OF THIS DRAWING OR CONSTRUCTION OF ANY PARTS WITHIN THIS DRAWING ARE FORBIDDEN WITHOUT THE WRITTEN CONSENT OF DIALIGHT CORP. | | |
| DIALIGHT CORP. INTERNAL REFERENCE ONLY = 3D MODEL : 5988DXX127F-A.6 | | |
| SCALE: 40.000 | DRAWING NUMBER | REV |
| ALL DIM's: INCH (mm) | C-18784 | A |
| TOLERANCES: UNLESS OTHERWISE SPECIFIED | TITLE | |
| FRACTIONS: ±1/64 | 0605 RIGHT ANGLE SMD LED | |
| DECIMALS (.XX): ±.01 | MATERIAL | |
| DECIMALS (.XXX): ±.005 | Dialight | |
| DECIMALS (.XXXX): ±.0005 | 1501 ROUTE 34 SOUTH | |
| ANGLES: ±1° | FARMINGDALE, NJ 07727 | |
| FINISH | (732) 919-3119 | |
| FSCM 83330 | www.dialight.com | |
| SHEET 1 OF 1 | FAMILY TABLE: | |