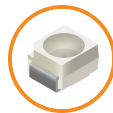
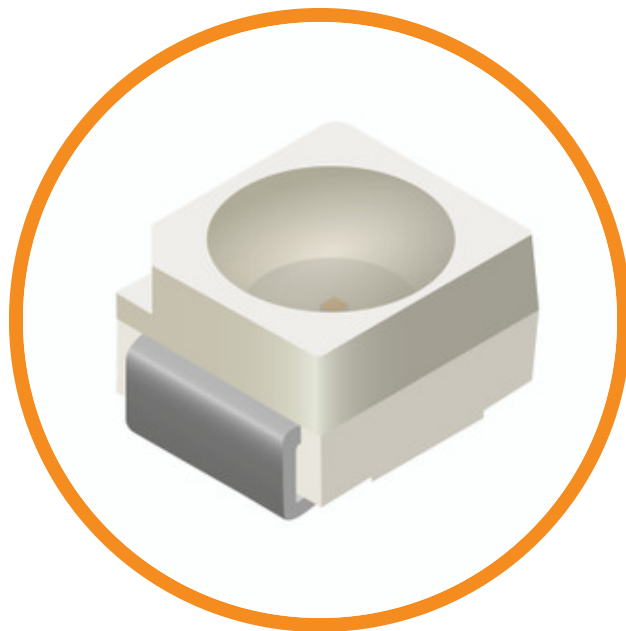




[Home](#) > [Circuit Board Indicators](#) > [Surface Mount LEDs](#) > [SM LED PLCC-4 R-G LC 7" RL](#)

597-7701-207LCF

SM LED PLCC-4 R-G LC 7" RL



[Datasheet](#)

[Check Stock](#)

[Samples](#)



Downloadable Resources

Check Stock

Specifications

Specifications

Series	597
Status	Active
Package	PLCC-4
Mounting Orientation	Top
Features	Low Current
Emitted Color	Red
Emitted Color 2	Green
Die 1	AllnGaP
Die 2	AllnGaP
Lens Color	Non-Tinted, Non-Diffused
Packaging Option	7" Reel
Quantity (per reel/sample)	2000
Peak Wavelength (nm) COLOR 1	643
Peak Wavelength (nm) COLOR 2	572
Dominant Wavelength (nm) COLOR 1 Typ	630



Intensity (mcd) COLOR 1 Min	4.5
Intensity (mcd) COLOR 1 Max	18
Forward Voltage (vdc) - Typ	1.8
Forward Voltage (vdc) - Max	2.2
Forward Voltage (vdc) COLOR 2 Typ	1.8
Forward Voltage (vdc) COLOR 2 Max	2.2
Reverse Current Intensity (uA)	10
Intensity (mcd) COLOR 2 Min	2.8
Continuous Forward Current (mA)	15
Peak Forward Current (mA)	100
Junction Temp (°C)	125
Reverse Voltage (V)	12

About Us

[Company Overview](#)

[EAX Login](#)

[Business Partners Policy](#)

Products & Solutions

[Circuit Board Indicators](#)

[Optopipe® Light Pipes](#)

[Panel Mount Indicators](#)