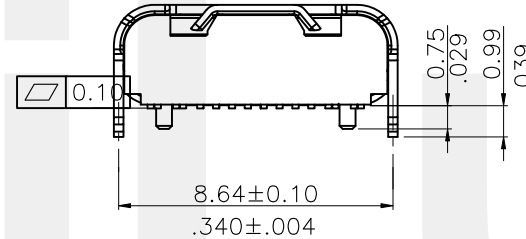
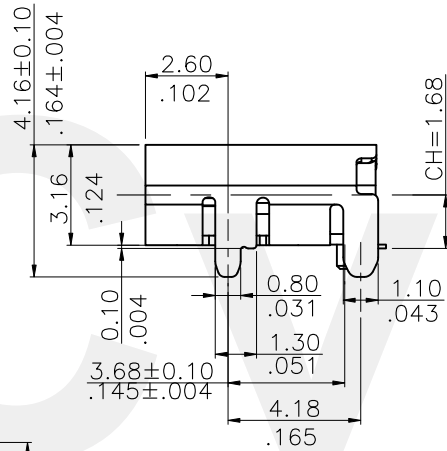
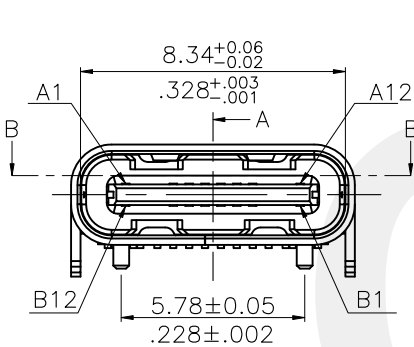
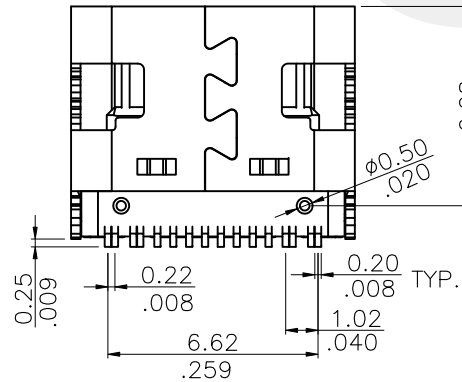


SECTION B-B



SECTION A-A



MATERIAL:

- 1.HOUSING: LCP, GLASS FIBER FILLED, BK
- 2.CONTACT: COPPER ALLOY
- 3.SHIELD: STAINLESS STEEL

FINISH:

- CONTACT: SEE ORDER INFORMATION
- SHELL: NICKEL PLATING

Ordering Code:

CU32 16 S * S D L R 009 -NH
 ① ② ③ ④ ⑤ ⑥ ⑦ ⑧ ⑨

- ① Series No.CU32
- ② No of Circuits:16Pin
- ③ S= Socket
- ④ Plating option:
 A= Gold Flash plated on Contact area,
 Matte Tin plated on Solderails,
 Nickel underplating over all
 2= Gold flash over 50u" (1.27um)
 Nickel
- ⑤ Shell Material & Plating:
 S=SUS 304 Ni Plated
- ⑥ Contact Material: D=Copper Alloy
- ⑦ Insulator Material & Color option:
 L=Lcp Black
- ⑧ Packing R= Tape & Reel
- ⑨ -NH= For Lead Free wave or IR Reflow
 Processes & Halogen Free

Halogen-Free

RoHS Compliant

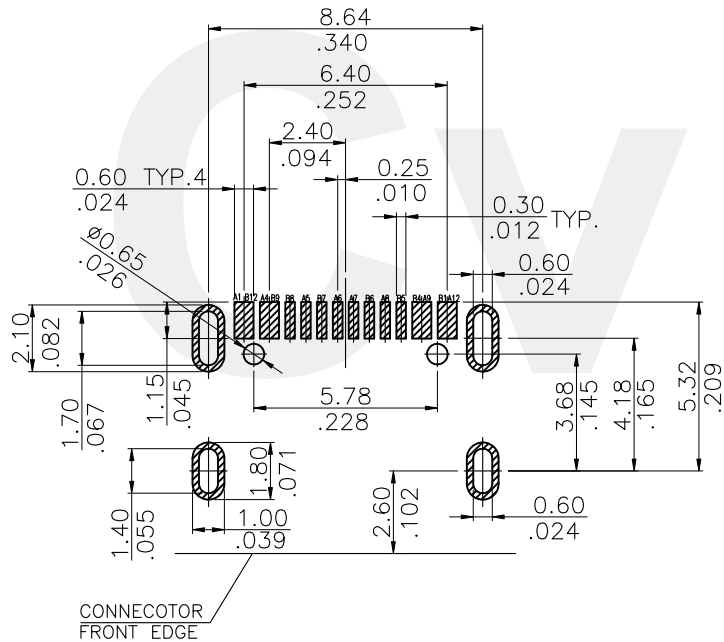
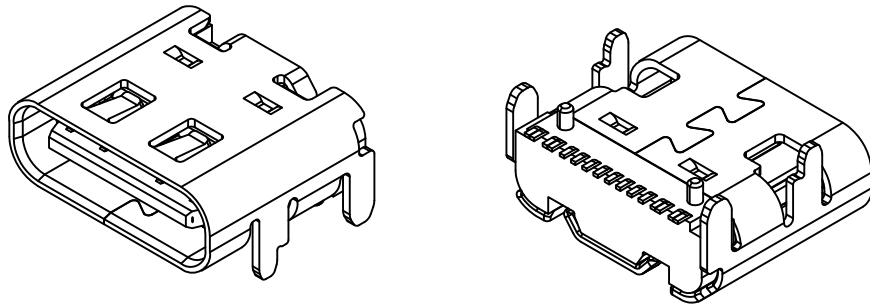
4					DATE	UNIT: mm / inch	TITLE: Type C/F 16 PIN CH=1.68mm
3					DRAWN BY: Annie	TOLERANCE UNLESS OTHERWISE SPECIFIED	SMT TYPE TOP MOUNT TYPE
2					ENGINEER: Gavin	.X ± 0.25/.010 X' ± 4'	MATERIAL:
1	Annie	7.20	CHANGE ECND121024	CHECKED BY: Keny	07/20-21'	.XX ± 0.20/.008 X' ± 2'	FINISH:
SYM	NAME	DATE	REVISIONS	APPROVED BY: Keny	07/20-21'	.XXX ± 0.10/.004 .XX' ±	

CVILUX COUP
 2021.08.12
 ISSUED



瀚荃股份有限公司
 CviLux Corporation

DRAWING NO.	CU32S09SB	PART NO.	CU3216S*SDLR009-NH
SCALE	1 / 1	SHEET	1 OF 3



RECOMMENDED P.C.B. LAYOUT (T:1.00mm)
TOLERANCE ±0.05mm

USB TYPE-C FULL-FEATURED RECEPTACLE INTERFACE PIN ASSIGNMENTS

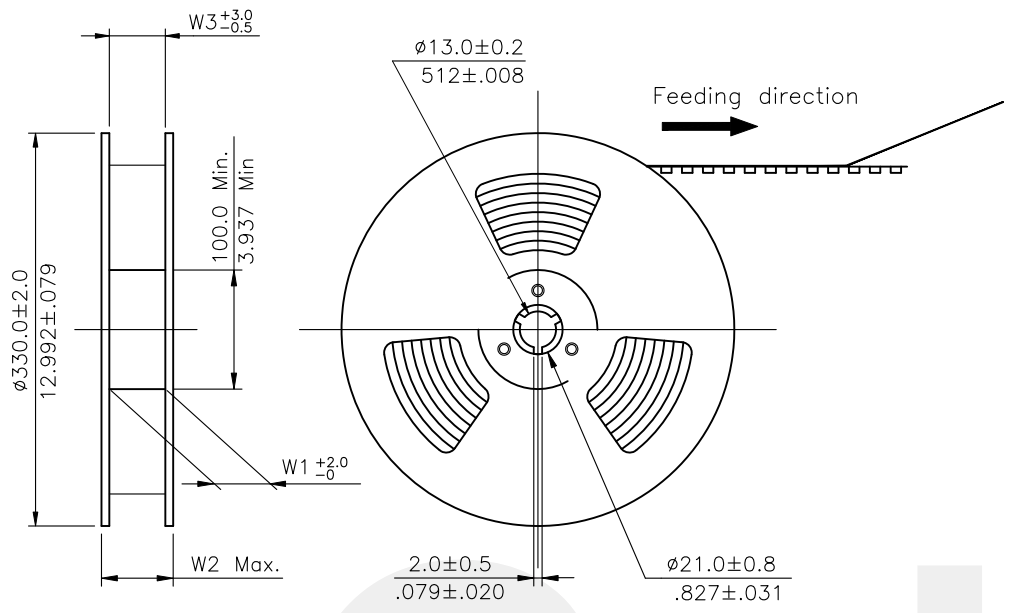
PIN	Signal Name	Description	PIN	Signal Name	Description
A1	GND	Ground return	B12	GND	Ground return
A2	X		B11	X	
A3			B10		
A4	Vbus	Bus Power	B9	VBUS	Bus Power
A5	CC1	Configuration Channel	B8	SBU2	Sideband Use(SBU)
A6	Dp1	Positive half of the USB 2.0 differential pair-Position 1	B7	Dn2	Negative half of the USB 2.0 differential pair-Position 2
A7	Dn1	Negative half of the USB 2.0 differential pair-Position 1	B6	Dp2	Positive half of the USB 2.0 differential pair-Position 2
A8	SBU1	Sideband Use(SBU)	B5	CC2	Configuration Channel
A9	VBUS	Bus Power	B4	VBUS	Bus Power
A10	X		B3	X	
A11			B2		
A12	GND	Ground return	B1	GND	Ground return

Halogen-Free RoHS Compliant



4					DATE	UNIT: mm / inch	TITLE: Type C/F 16 PIN CH=1.68mm SMT TYPE TOP MOUNT TYPE	瀚荃股份有限公司 CviLux Corporation
3				DRAWN BY: Annie	07/20-21'	TOLERANCE UNLESS OTHERWISE SPECIFIED	MATERIAL:	
2				ENGINEER: Gavin	07/20-21'	.X ± 0.25/010 X' ± 4'	FINISH:	
1	Annie	7.20	CHANGE ECND121024	CHECKED BY: Keny	07/20-21'	.XX ± 0.20/008 X' ± 2'		
SYM	NAME	DATE	REVISIONS	APPROVED BY: Keny	07/20-21'	.XXX ± 0.10/004 .XX' ±		DRAWING NO. CU32S09SB PART NO. CU3216S*SDLR009-NH
								SCALE 1 / 1 SHEET 2 OF 3

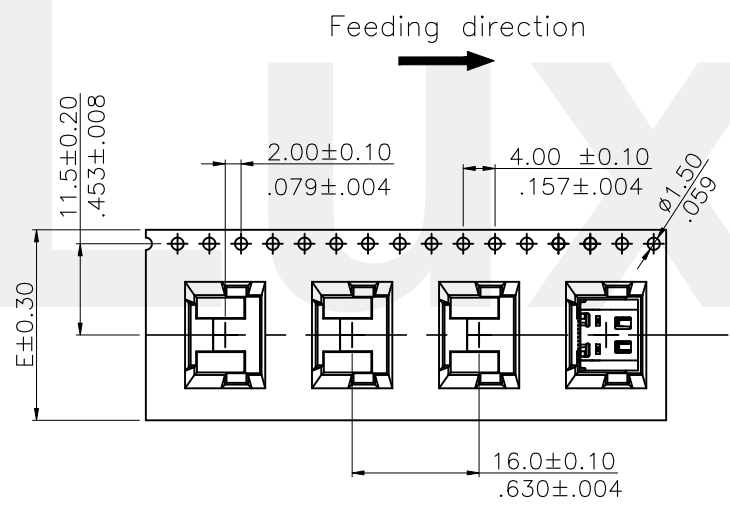
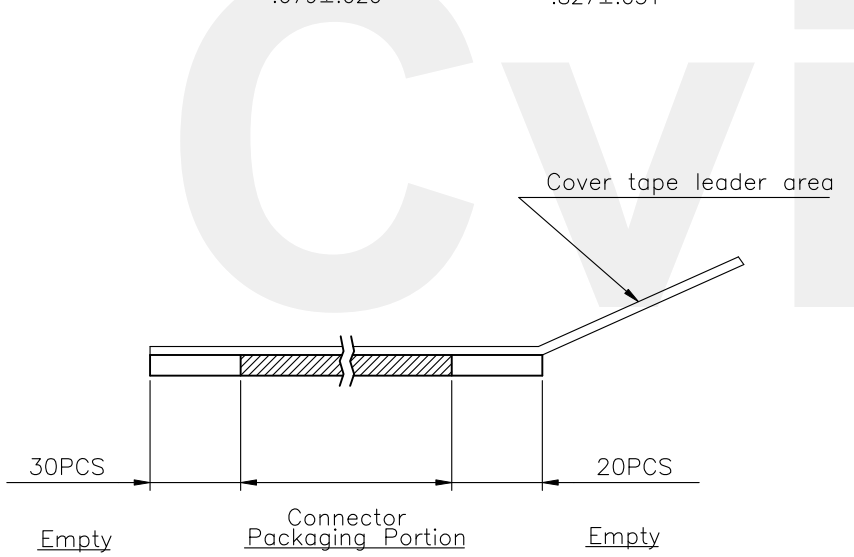
CVILUX COUP
 2021.08.12
 ISSUED



NOTE :

- * Reel Material : HIPS
- * Carrier Material : Clear, Conductive Polystyrene Alloy
- * Cover Tape Material : Polyester
- * Cover Tape Peel Strength : 0.1N – 1.3N
- * Carrier camber is within 1mm in 250mm
- * All dimensions meet EIA-481-B requirements.
- * Quantity : 800 PCS/Reel

Dimension				Packing (Reel/Carton)
E	W1	W2	W3	
24.0(.945)	24.5(.965)	30.5(1.201)	24.5(.965)	10



Halogen-Free RoHS Compliant

4					DATE	UNIT: mm / inch	TITLE: Type C/F 16 PIN CH=1.68mm SMT TYPE TOP MOUNT TYPE
3				DRAWN BY: Annie	07/20-21'	TOLERANCE UNLESS OTHERWISE SPECIFIED	MATERIAL:
2				ENGINEER: Gavin	07/20-21'		
1	Annie	7.20	CHANGE ECND121024	CHECKED BY: Keny	07/20-21'	.X ±	.X' ± 1'
						.XX ±	.X' ±
						.XXX ±	.X' ±
SYM	NAME	DATE	REVISIONS	APPROVED BY: Keny	07/20-21'		FINISH:



DRAWING NO.	CU32S09SE	PART NO.	CU3216S*SDLR009-NH
SCALE		SHEET	3 OF 3

CVILUX COUP
2021.08.12
ISSUED