

MATERIAL:

- 1.HOUSING: LCP, GLASS FIBER FILLED, BK
- 2.CONTACT: COPPER ALLOY (T=0.12mm)
- 3.GUARD PLATE:STAINLESS STEEL (T=0.10mm)
- 4.SHIELD: STAINLESS STEEL (T=0.30mm)

FINISH:

CONTACT: GOLD PLATING ON CONTACT AREA,
MATTE PLATING ON SOLDERTAILS,
NICKEL UNDERPLATING OVER ALL
SHELL: NICKEL PLATING

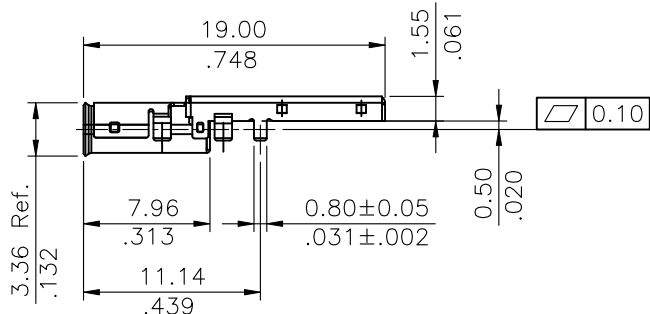
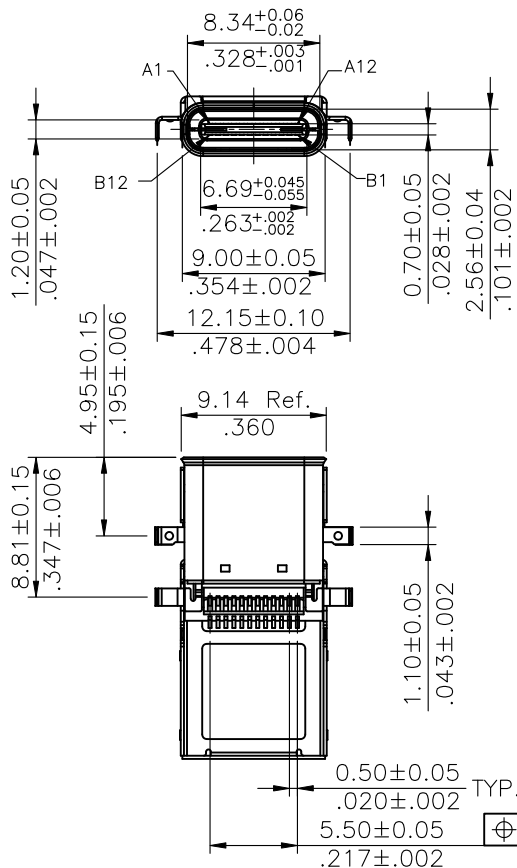
Ordering Code:

CU18 24 S * M 1 M P * R0 -LF -HC
① ② ③ ④ ⑤ ⑥ ⑦ ⑧ ⑨ ⑩ ⑪ ⑫

- ① Series No.
- ② No. of Circuits
- ③ S= Socket
- ④ Plating option:

A= Gold Flash plated on Contact area,
Matte Tin plated on Solderails,
Nickel underplating over all
B= 15u" gold plated on Contact area,
Matte Tin plated on Solderails,
Nickel underplating over all
C= 30u" gold plated on Contact area,
Matte Tin plated on Solderails,
Nickel underplating over all

- ⑤ Contact tail style:
M= Middle mount Side Entry Type
- ⑥ Insulator Color: 1= Black
- ⑦ Contact solder tail style: M= SMT Type
- ⑧ Shell Type: P= DIP+SMT
- ⑨ Transmission speeds:
△ 0= For Gen1(Gold 15u" Only)
1= For Gen2(Gold 30u" Only)
2= For USB 2.0(Gold Flash Only)
- ⑩ Packing Option: R0= Tape & Reel
- ⑪ -LF= For Lead Free IR Reflow Process
- ⑫ -HC= For High Current



| Part No. | Transmission speeds | Plating Code |
|-----------------------|---------------------|--------------|
| CU1824SAM1MP2R0-LF-HC | USB 2.0 | A:Gold Flash |
| CU1824SBM1MP0R0-LF-HC | Gen1 | B:15u" Gold |
| CU1824SCM1MP1R0-LF-HC | Gen2 | C:30u" Gold |

Lead Free Process

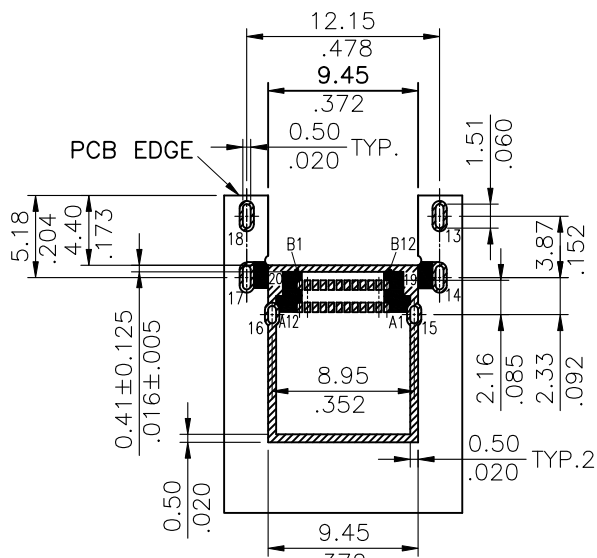
RoHS compliant

| | | | | | | | |
|-----|------|---------|------------|-------------------|----------|---|--|
| ④ | | | | | DATE | UNIT: mm / inch | TITLE: U.S.B TYPE C SOCKET SMT Middle mount Right angle |
| ③ | | | | DRAWN BY: Mark | 8/30-17' | TOLERANCE UNLESS OTHERWISE SPECIFIED | MATERIAL: |
| ② | | | | ENGINEER: Mark | 8/30-17' | | |
| ① | Mark | 8/29-17 | ECRD117003 | CHECKED BY: Andy | 8/30-17' | .X ± 0.25/.010 X' ± 4' | FINISH: |
| SYM | NAME | DATE | REVISIONS | APPROVED BY: Andy | 8/30-17' | .XX ± 0.20/.008 X' ± 2' | |
| | | | | | | .XXX ± 0.10/.004 .XX' ± | |



瀚荃股份有限公司
CviLux Corporation

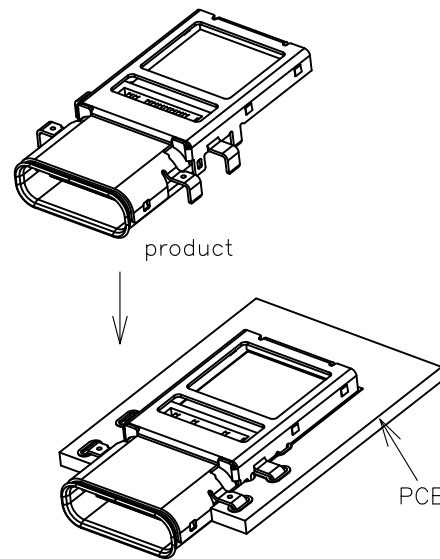
| | | | |
|-------------|----------|----------|-----------------------|
| DRAWING NO. | CU1827SB | PART NO. | CU1824S*M1MP0R0-LF-HC |
| SCALE | 2 / 1 | SHEET | 1 OF 3 |



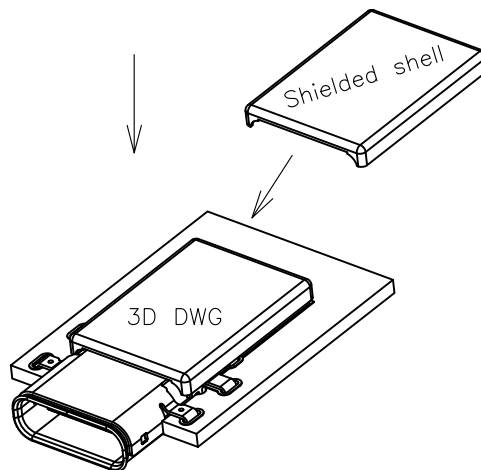
RECOMMENDED P.C.B. LAYOUT (T:1.00mm)
TOLERANCE UNSPECIFIED ±0.05mm

: The green paint on the copper foil

: Solder Area



Product welding PCB plate



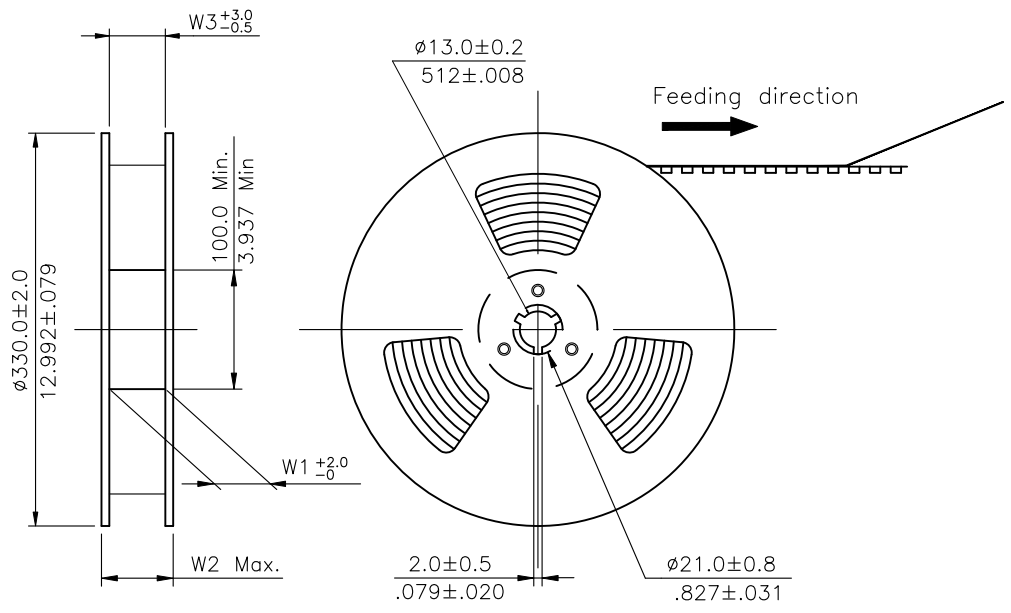
Installation of shielded shell after welding PCB

USB TYPE-C FULL-FEATURED RECEPTACLE INTERFACE PIN ASSIGNMENTS

| PIN | Signal Name | Description | PIN | Signal Name | Description |
|-----|-------------|---|-----|-------------|---|
| A1 | GND | Ground return | B12 | GND | Ground return |
| A2 | SSTXp1 | Positive half of first SuperSpeed TX differential pair | B11 | SSRXp1 | Positive half of first SuperSpeed RX differential pair |
| A3 | SSTXn1 | Negative half of first SuperSpeed TX differential pair | B10 | SSRXn1 | Negative half of first SuperSpeed RX differential pair |
| A4 | Vbus | Bus Power | B9 | VBUS | Bus Power |
| A5 | CC1 | Configuration Channel | B8 | SBU2 | Sideband Use(SBU) |
| A6 | Dp1 | Positive half of the USB 2.0 differential pair-Position 1 | B7 | Dn2 | Positive half of the USB 2.0 differential pair-Position 2 |
| A7 | Dn1 | Negative half of the USB 2.0 differential pair-Position 1 | B6 | Dp2 | Negative half of the USB 2.0 differential pair-Position 2 |
| A8 | SBU1 | Sideband Use(SBU) | B5 | CC2 | Configuration Channel |
| A9 | VBUS | Bus Power | B4 | VBUS | Bus Power |
| A10 | SSRXn2 | Negative half of second SuperSpeed RX differential pair | B3 | SSTXn2 | Negative half of second SuperSpeed TX differential pair |
| A11 | SSRXp2 | Positive half of second SuperSpeed RX differential pair | B2 | SSTXp2 | Positive half of second SuperSpeed TX differential pair |
| A12 | GND | Ground return | B1 | GND | Ground return |

Lead Free Process **RoHS Compliant**

| | | | | | | | | | |
|-----|------|----------|------------|-------------------|----------|---|--|--------------------------------|---------------------------------|
| 4 | | | | | DATE | UNIT: mm / inch | TITLE: U.S.B TYPE C SOCKET SMT Middle mount Right angle | 瀚荃股份有限公司 CviLux Corporation | |
| 3 | | | | DRAWN BY: Mark | 8/30-17' | TOLERANCE UNLESS OTHERWISE SPECIFIED | MATERIAL: | | |
| 2 | | | | ENGINEER: Mark | 8/30-17' | .X ± 0.25/.010 .X' ± 4' | FINISH: | | |
| 1 | Mark | 8/29-17' | ECRD117003 | CHECKED BY: Andy | 8/30-17' | .XX ± 0.20/.008 .X' ± 2' | | | |
| SYM | NAME | DATE | REVISIONS | APPROVED BY: Andy | 8/30-17' | .XXX ± 0.10/.004 .XX' ± | | | |
| | | | | | | | | DRAWING NO. CU1827SB | PART NO. CU1824S*MI1MPORO-LF-HC |
| | | | | | | | | SCALE 2 / 1 | SHEET 2 OF 3 |

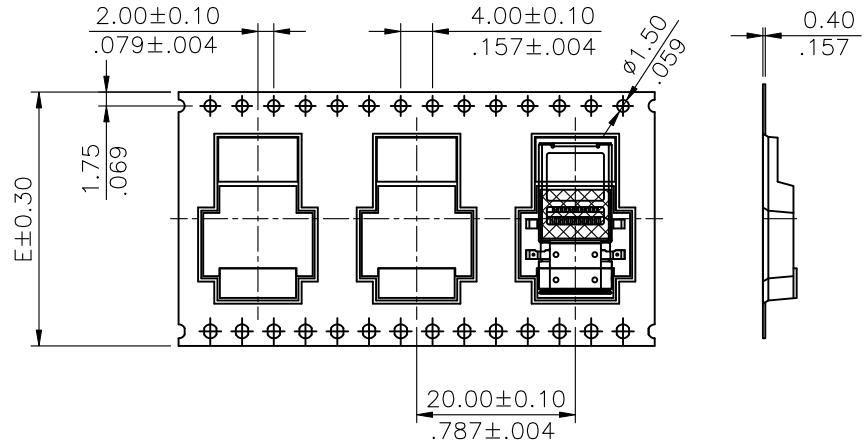
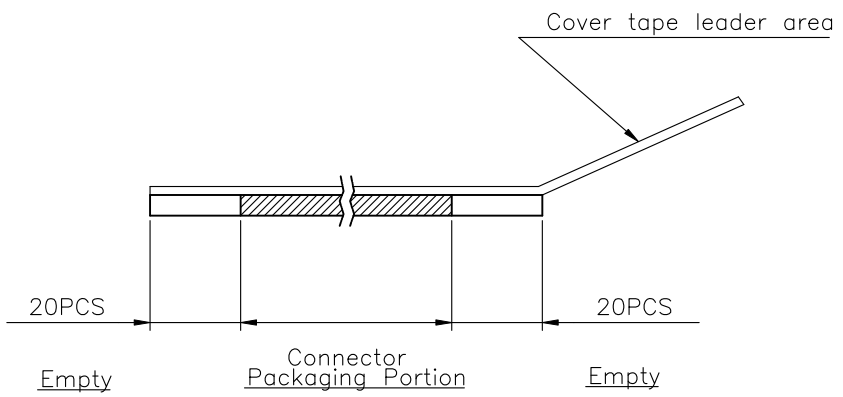


NOTE :


- * Reel Material : HIPS
- * Carrier Material : Clear, Conductive Polystyrene Alloy
- * Cover Tape Material : Polyester
- * Cover Tape Peel Strength : 0.1N – 1.3N
- * Carrier camber is within 1mm in 250mm
- * All dimensions meet EIA-481-B requirements.
- * Quantity : 700 PCS/Reel

| Dimension | | | | Packing (Reel/Carton) |
|-------------|-------------|-------------|-------------|--------------------------|
| E | W1 | W2 | W3 | |
| 32.0(1.260) | 32.5(1.280) | 38.5(1.516) | 32.5(1.280) | 8 |

Feeding direction
→



RoHS Compliant

| | | | | | | | | |
|-----|------|---------|------------|-------------------|----------|---|--|--|
| 4 | | | | | DATE | UNIT: mm / inch | TITLE: U.S.B TYPE C PLUG SMT MIDDLE MOUNT RIGHT ANGLE |  瀚荃股份有限公司 CviLux Corporation |
| 3 | | | | DRAWN BY: Mark | 8/30-17' | TOLERANCE UNLESS OTHERWISE SPECIFIED | MATERIAL: | |
| 2 | | | | ENGINEER: Mark | 8/30-17' | .X ± | .X' ± 1' | DRAWING NO. CU1827SB |
| 1 | Mark | 8/29-17 | ECRD117003 | CHECKED BY: Andy | 8/30-17' | .XX ± | .X' ± | PART NO. CU1824S*M1MPOR0-LF-HC |
| SYM | NAME | DATE | REVISIONS | APPROVED BY: Andy | 8/30-17' | .XXX ± | .XX' ± | SCALE |
| | | | | | | | | SHEET 3 OF 3 |