

Series OAC,(S)MOAC, X4OAC

AC Output Modules

- Status Indicating LED on X4 Series and 4A Fuse
- UL, CSA, and CE
- Zero Cross Switching

Solid state I/O switching modules deliver an electrically clean, photo-isolated, noise-free "output" interface from logic level control systems to external loads such as motors, valves, solenoids, etc. -- or an "input" interface from the load or sensors to microprocessor or computer-based logic level systems. Designed for long, reliable service in demanding industrial environments.

CRYDOM

Control over power

INPUT SPECIFICATIONS

	OAC5 (S)MOAC5 X4OAC5	OAC15 (S)MOAC15 X4OAC15	OAC24 (S)MOAC24 X4OAC24	OAC5A (S)MOAC5A X4OAC5A	OAC15A (S)MOAC15A X4OAC15A	OAC24A (S)MOAC24A X4OAC24A
Nominal Input Voltage [Vdc]	5	15	24	5	15	24
Min. Input Voltage @ pin 3 [Vdc] (X4 Series)	2.5 (4)	8.5 (10)	16.5 (18)	2.5 (4)	8.5 (10)	16.5 (18)
Max. Input Voltage @ pin 3 [Vdc] (X4 Series)	6.0 (7.5)	18.5 (20)	29.0 (30.5)	6.0 (7.5)	18.5 (20)	29.0 (30.5)
Must Turn Off Voltage [Vdc]	2.0	2.0	2.0	2.0	2.0	2.0
Typical Input Current [mAdc]	10	10	10	10	10	10
Max. Input Current [mAdc]	27	20	13.5	27	20	
Nominal Input Resistance [ohm]	240	900	2.2K	240	900	2.2K

OUTPUT SPECIFICATIONS

Nominal Line Voltage [Vrms]	120	120	120	240	240	240
Max. Line Voltage [Vrms]	140	140	140	280	280	280
Min. Line Voltage [Vrms]	12	12	12	24	24	24
Max. Peak Off-State Voltage [V peak]	400	400	400	600	600	600
Max. Off-State Leakage Current [mArms]	2.5	2.5	2.5	4.5	4.5	4.5
Static Off-State (dv/dt)[V/μs]	200	200	200	200	200	200
Max. On-State Current [Arms]	3	3	3	3	3	3
Min. On-State Current [mArms]	50	50	50	50	50	50
Max. One Cycle Surge [A peak]	100	100	100	100	100	100
Peak On-State Voltage [V peak]	1.6	1.6	1.6	1.6	1.6	1.6
Max. Turn-On Time [cycles]	1/2	1/2	1/2	1/2	1/2	1/2
Max Turn-Off Time [cycles]	1/2	1/2	1/2	1/2	1/2	1/2
Derating [mA per ° above 25° C]	33	33	33	33	33	33
Fuse Rating [fast-acting] (X4 Series Only)	4A	4A	4A	4A	4A	4A

© 2002 CRYDOM CORP Specifications subject to change without notice.



Series OAC, (S)MOAC, X4OAC

AC Output Modules

CRYDOM

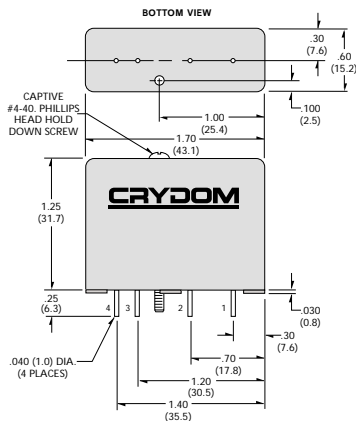
Control over power

GENERAL SPECIFICATIONS

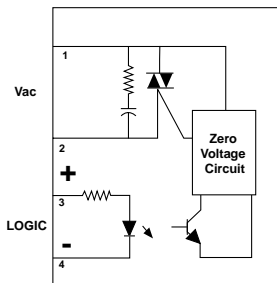
Operating temperature range	Ɖ30 to +80°C
Storage temperature range	Ɖ40 to +100°C
Isolation	4,000 Vrms
Capacitance input to output	8 pF
Line frequency range	47 to 63 Hz
Package Color	Black

WIRING & MECHANICAL DIAGRAMS

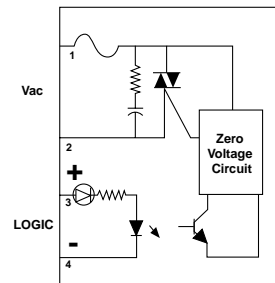
Standard Series, OAC



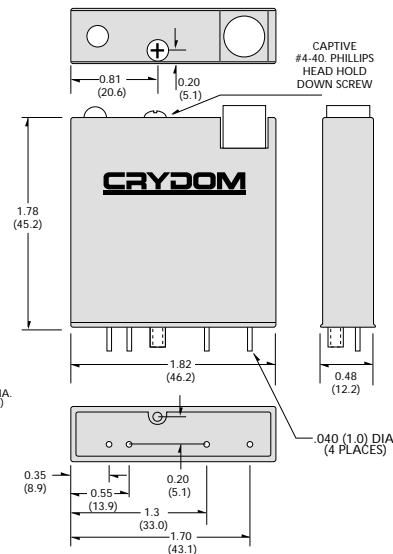
Standard and Mini Pack



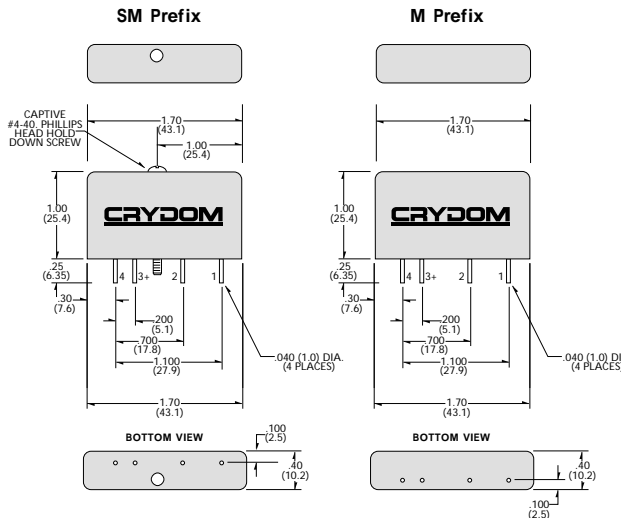
X4 Series



X4 Series, X4OAC



MINI-PACK Series, (S)MOAC



APPLICATION NOTES

- Do not install or remove modules in live (electrically hot) circuits. High voltage may be present.
- An externally located commutating diode must be installed across inductive loads
- I/O module boards also available

All dimensions are in inches (millimeters)

© 2002 CRYDOM CORP Specifications subject to change without notice.

