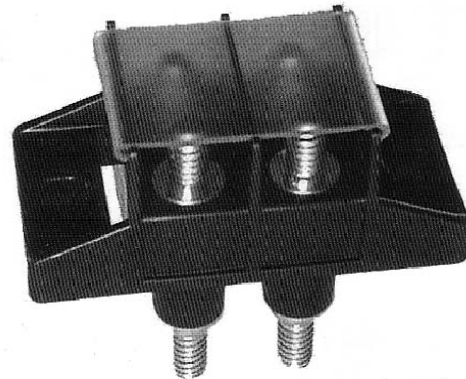


## Series C7021

### Power Feed Thru Terminal Block

MAGNUM® is pleased to introduce a UL and CUL recognized, power feed through terminal block. The C7021 Series block has rows of two 1/4-20 studs which are capable of accommodating the industry standard two-hole compression lugs on 5/8" centers. The block is rated at 300V and 175A when using both studs in parallel or 115A using a single stud per line.

The C7021 is manufactured using a durable UL 94V-0 thermoplastic in order to minimize barrier breakage. The block can be mounted using four #6 thread cutting screws that mount from the backside or using the optional mount ends to secure the block to the panel from the front. Additional hardware and optional dead-front covers (Part No. CSB7021-XX) are also available.



#### APPLICATIONS

The C7021 terminal block is intended for use in applications requiring up to 175A utilizing a 2-hole compression lug on 5/8" centers. It is ideal for use as an input/output block for telecommunications power panels, or anywhere in which -eliminating busbars would be an advantage.

#### SPECIFICATIONS

**Ratings:** 175A\* per pole, 300V.

**Center Spacing:** 0.690" (17.5mm)

**Wire Range:** AWG #2/0-8

**Number of Poles:** 2-6

**Bolt Hole Spacing:** 0.625" (15.88mm)

**Stud:** Standard 1/4-20 stud or optional M6 stud.

**Mounting:** Optional mounting ears.

**Stud Material:** Brass, Tin Plated.

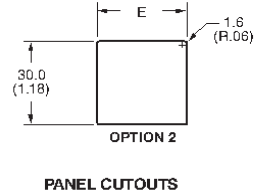
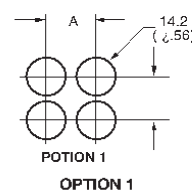
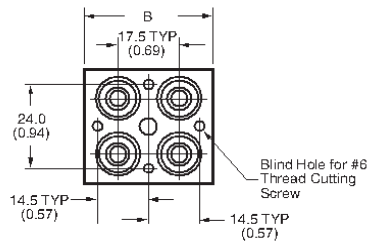
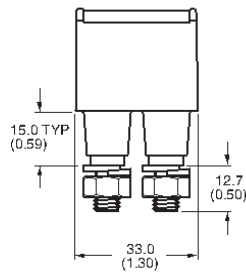
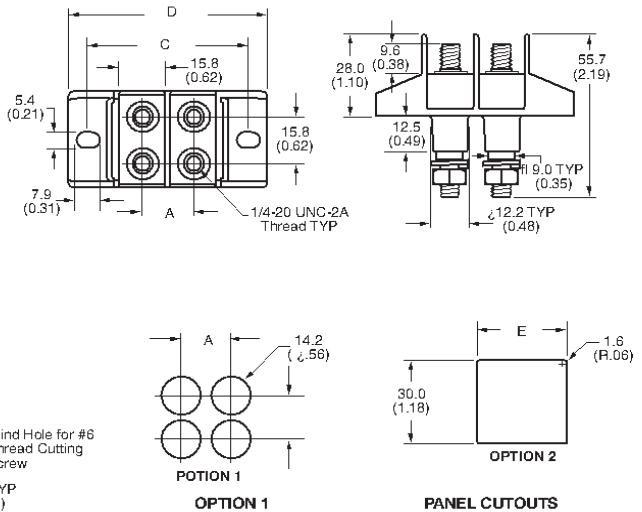
**Torque Rating:** 36 in-lb

**Operating Temperature:** 130°C

**Agency Information:** UL/CSA; CE Certified

\*175 achieved using both studs in parallel, 115A using a single stud per line.

Part No.	A	B	C	D	E
C7021-01-X					
C7021-02-X	17.5 (0.69)	-	54.4 (2.14)	67.3 (2.65)	31.8 (1.25)
C7021-03-X	34.9 (1.37)	-	70.9 (2.83)	84.8 (3.34)	49.2 (1.94)
C7021-04-X	52.3 (2.06)	-	89.3 (3.52)	102.2 (4.02)	66.7 (2.63)
C7021-05-X	69.8 (2.75)	-	106.8 (4.20)	119.7 (4.71)	84.2 (3.31)
C7021-06-X	87.2 (3.44)	-	124.2 (4.89)	134.1 (5.40)	101.7 (4.00)
C7021-01N-X					
C7021-02N-X	17.5 (0.69)	36.1 (1.42)	-	-	31.8 (1.25)
C7021-03N-X	34.9 (0.69)	53.5 (2.11)	-	-	49.2 (1.94)
C7021-04N-X	52.3 (2.06)	71.0 (2.80)	-	-	66.7 (2.63)
C7021-05N-X	69.8 (2.75)	88.4 (3.48)	-	-	84.2 (3.31)
C7021-06N-X	87.2 (3.44)	105.9 (4.17)	-	-	101.7 (4.00)



### Part Numbering System

Inches (Millimeters)

#### Series

C 7 0 2 1

#### Poles

— □ □

- 01 - 1 pole (2 studs)
- 02 - 2 pole (4 studs)
- 03 - 3 pole (6 studs)
- 04 - 4 pole (8 studs)
- 05 - 5 pole (10 studs)
- 06 - 6 pole (12 studs)

#### Mount Ends

□

- Blank - Mount ends
- N - No mount ends

#### Studs

□ □ —

- Blank - Standard
- 1/4 - 20 studs
- M6 - M6 studs

#### Hardware

□ □

- Blank - No hardware
- 0 - Bulk pack, one set
- 1 - Bulk pack, two sets
- 2 - Assembled, bottom
- 3 - Assembled, top
- 4 - Assembled, both sets