

## Series A1000 & Series CB1000

### Single Row Terminal Blocks

#### SPECIFICATIONS

**Rating:** 20A, 150V

**Center Spacing:** .325" (8.26 mm)

**Wire Range:** #14-22 AWG CU

**Screw Size:** #6-32 zinc plated phillslot wire-ready screws with a #2 driving recess.

**Torque Rating:** 9 in-lb.

**Base:** Standoffs are standard on CB1000 Series for easy flux washing.

**Distance Between Barriers:** .26" (6.6 mm)

**Recommended PCB Hole Diameter:** .070" (1.78 mm)

**Operating Temperature:** 105°C (221°F) max., -40°C (-40°F) min.

**Molded Material:** Black, UL Rated 94V0 Thermoplastic

**Breakdown Voltage:** 1600V

**Agency Information:** UL/CSA; IEC Compliance; CE Certified



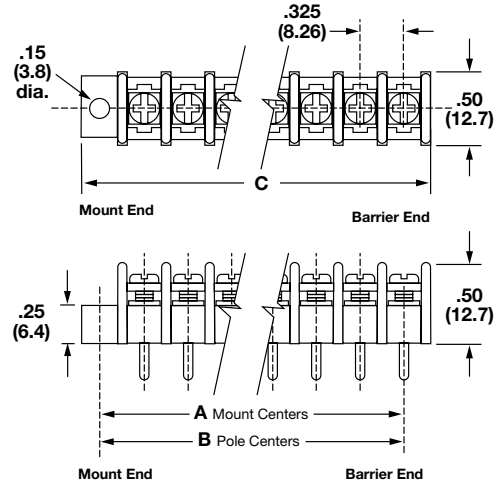
CB10210707



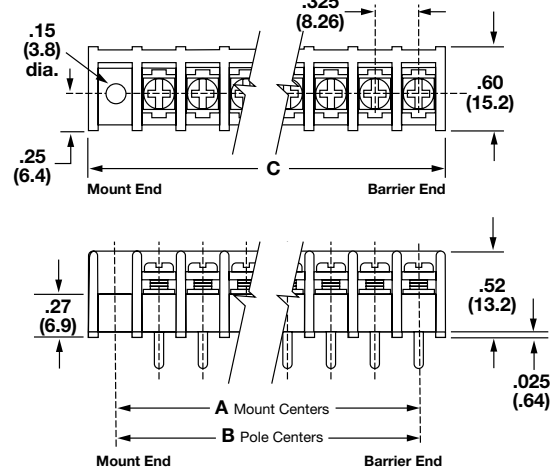
A102206

Poles	MOUNTING ENDS ONLY		BARRIER & MOUNTING ENDS B Pole Ctrs.	BARRIER ENDS ONLY C Length
	A Mount Ctrs.	C Length		
02	.98	1.37	.33	.72
03	1.30	1.69	.65	1.04
04	1.63	2.02	.98	1.37
05	1.95	2.34	1.30	1.69
06	2.28	2.67	1.63	2.02
07	2.60	2.99	1.95	2.34
08	2.93	3.32	2.28	2.67
09	3.25	3.64	2.60	2.99
10	3.58	3.97	2.93	3.32
11	3.90	4.29	3.25	3.64
12	4.23	4.62	3.58	3.97
13	4.55	4.94	3.90	4.29
14	4.88	5.27	4.23	4.62
15	5.20	5.59	4.55	4.94
16	5.53	5.92	4.88	5.27
17	5.85	6.24	5.20	5.59
18	6.18	6.57	5.53	5.92
19	6.50	6.89	5.85	6.24
20	6.83	7.22	6.18	6.57
21	7.15	7.54	6.50	6.89
22	7.48	7.87	6.83	7.22
23	7.80	8.19	7.15	7.54
24	8.13	8.52	7.48	7.87
25	8.45	8.84	7.80	8.19
26	8.78	9.17	8.13	8.52
27	9.10	9.49	8.45	8.84
28	9.43	9.82	8.78	9.17
29	9.75	10.14	9.10	9.49
30	10.08	10.47	9.43	9.82
31	10.40	10.79	9.75	10.14
32	10.73	11.12	10.08	10.47
33	11.05	11.44	10.40	10.79
34	11.38	11.77	10.73	11.12
35			11.05	11.44
36			11.38	11.77

#### A1000 Series



#### CB1000 Series



\* Dimensions in inches. To convert to millimeters, multiply by 25.4.

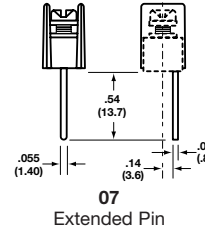
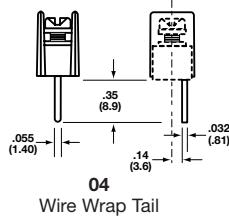
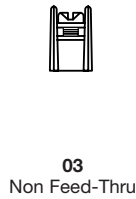
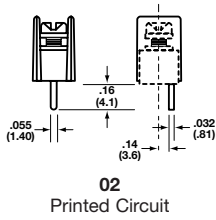
## Part Numbering System

Series	Terminal Style	Base/End	Poles	Screw Options	Options
<b>A1</b>					
<b>CB1</b>					
<b>A1</b> - standard barrier <b>CB1</b> - closed barrier	<b>02</b> - printed circuit <b>03</b> - non feed-thru <b>04</b> - wire wrap tail <b>07</b> - extended pin	<b>1</b> - mount end <b>2</b> - barrier end	<b>02 to 36</b> <b>02 to 34</b> on mount end base	Blank - std. screws <b>03</b> - stainless steel <b>04</b> - nickel brass <b>07</b> - steel SEMS & washer (not available with hardware options) <b>CA</b> - standard captive screw <b>07CA</b> - SEMS captive	<b>AB &amp; DR</b> - angle mts. (A1 only-pg 5) <b>B1 to B9</b> - .187" QC (all positions) <b>EB</b> - exit back terminals on CB1 w/07 screw option only <b>JA, JB &amp; JC</b> - barrier jumpers <b>L1 to L6</b> marking options (pg 22) <b>LT1 to LT6</b> marking options (CB1 only-pg 22) <b>MP &amp; MT</b> - mounting plates (pg 5) <b>R26 &amp; R45</b> - right angle bends (A1 only-pg 5)

Covers - (pg 23)

## Terminal Styles

Inches (Millimeters)



## Screw Options

Wire ready screws standard on all terminal styles



**Standard**  
Zinc Plated Steel



**03**  
Stainless Steel



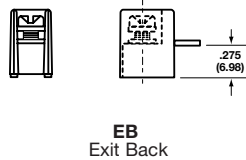
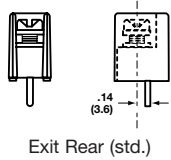
**04**  
Brass Nickel Plated



**07**  
Steel SEMS Zinc Plated

## CB1 Terminal Exit Options

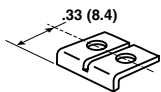
Inches (Millimeters)



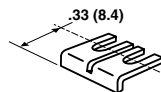
## Hardware Options

(Bulk ordering part numbers are in parentheses.)

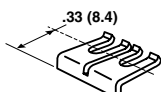
### Jumpers



**JA (JA1-XX)**



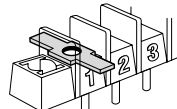
**JB (JB1-XX)**



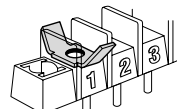
**JC (JC1-XX)**

### Quick Connects

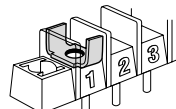
Blade Width B = .187". (For other orientations, contact factory.)



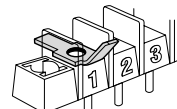
**B1 (1B1) \***



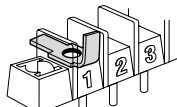
**B2 (1B2) \***



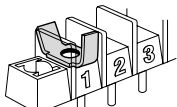
**B3 (1B3) \***



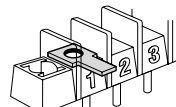
**B4 (1B4) \***



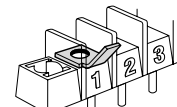
**B5 (1B5) \***



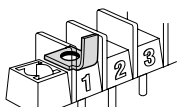
**B6 (1B6) \***



**B7 (1B7)**



**B8 (1B8)**



**B9 (1B9)**

\* N/A on CB1 Series.

## Series A1000 & CB1000

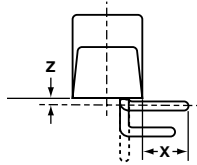
### Single Row Terminal Blocks

## Mounting Options

Inches (Millimeters)

### Right Angle Bends (A1 only)

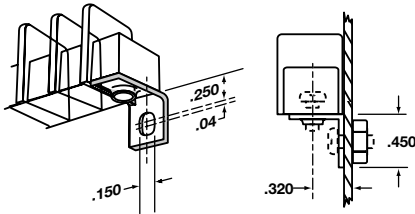
Right angle terminals are offered on the A1000 Series. Configurations are defined in these dimensions: X = pin extension beyond the block base; Z = length from block base to centerline of the terminal tip. Standard bends consist of the X and Z dimensions shown in the chart. Specify by adding the selected Bend Option Code to the terminal part no.



Bend Option Code	X (minimum)	Z
R26 (04 terminal only)	.14	.09
R45 (07 terminal only)	.33	.09

Dimensions in inches. To convert to millimeters, multiply by 25.4.

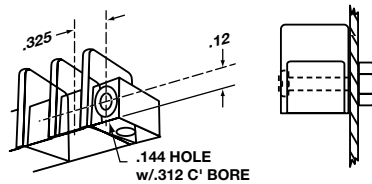
### Angle Brackets (A1 only)



#### Option AB

Angle brackets enable block to be fastened at right angles to normal mount position. Bulk part no. **1AB**.

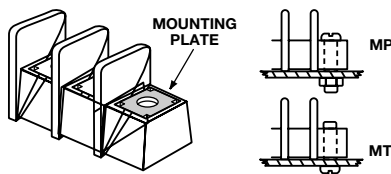
### Drilled Right Angle (A1 only)



#### Option DR

Counterbored holes across mount ends of block enable fastening with two screws at right angles to normal mount position.

### Mounting Plates



#### Options MP & MT

**MP** Metal inserts with .150" dia. hole accept #6 screw. **MT** Metal inserts with tapped hole accept #6-32 screw. Bulk Part Nos. **1MP & 1MT**.