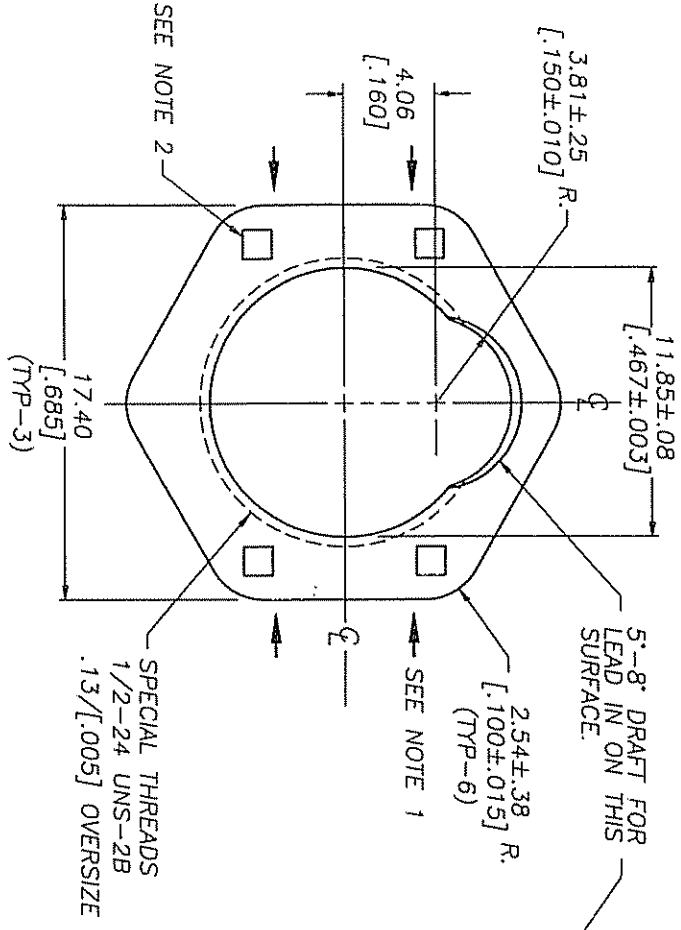
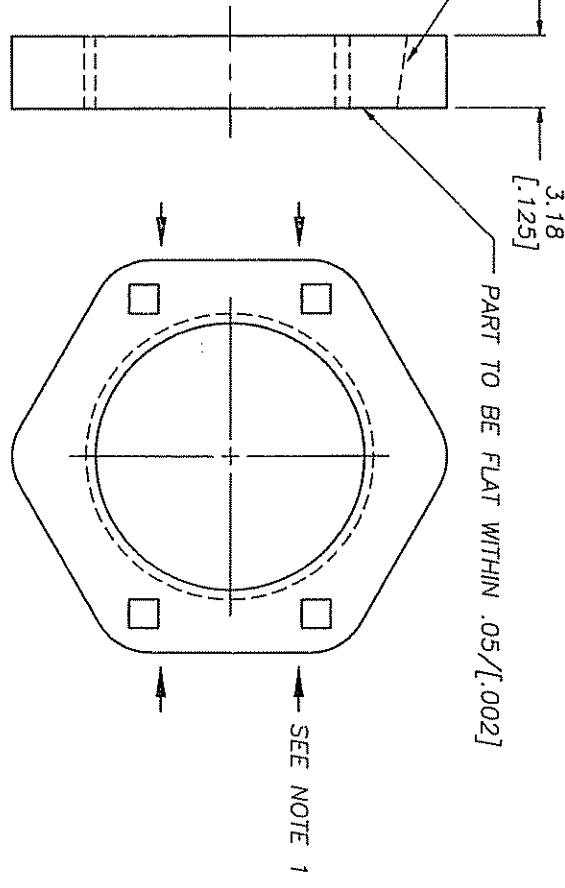


(B)



P/N 2A1460

MATERIAL: POLYCARBONATE #3505064  
 ALTERNATE MATERIAL: #3505040  
 #3505040-1  
 #3505071  
 PREFERRED COLOR: BLACK (PMS 2) COLOR CONCENTRATE #3505992-27  
 ALTERNATE COLOR: BLACK (PMS 2) LIQUID COLOR #3505999-2  
 STORE IN BAG #3021670  
 BULK PACKAGING SPECIFICATION #1P1305



P/N 2A1460-1

SAME AS PART NUMBER 2A1460 EXCEPT IT DOES NOT CONTAIN 3.81/ [.150] CUTOUT.

- NOTES:
- 1) STRENGTH TEST - NUT MUST WITHSTAND A MINIMUM OF 30 LBS. OF FORCE APPLIED TO THE SURFACES INDICATED.
  - 2) INDENTATIONS IN THE NUT FACE NOT EXCEEDING 1.27/ [.050] DIA. x 1.27/ [.050] DEEP ARE PERMISSABLE, WHICH ARE THE DIRECT RESULT OF TOOLING USED TO PREVENT PART ROTATION AS THE UNSCREWING CORE IS WITHDRAWN.

CONTRACTOR: THE INFORMATION CONTAINED IN THIS DOCUMENT IS UNCLASSIFIED EXCEPT WHERE SHOWN OTHERWISE. IT IS THE PROPERTY OF GOVERNMENT AND IS LOANED TO YOU BY OR THROUGH THE INFORMATION CENTER FOR SCIENCE AND TECHNOLOGY. IT IS TO BE RETURNED TO GOVERNMENT AND IS NOT TO BE REPRODUCED OR DISTRIBUTED OUTSIDE YOUR ORGANIZATION WITHOUT THE WRITTEN PERMISSION OF THE INFORMATION CENTER FOR SCIENCE AND TECHNOLOGY.	SCALE: 3X	UNLESS OTHERWISE SPECIFIED TOLERANCES TO BE: METRIC ± .13mm ANGULAR ± 2°	THIRD ANGLE PROJECTION
INDICATES CRITICAL DIMENSION OR FEATURE	INDICATES CRITICAL DIMENSION OR FEATURE	PART FEATURES TO BE SYMMETRICAL ABOUT INDICATED CENTER LINE WITHIN .25 [.010] TIR RFS.	
			C/F NO. 71221