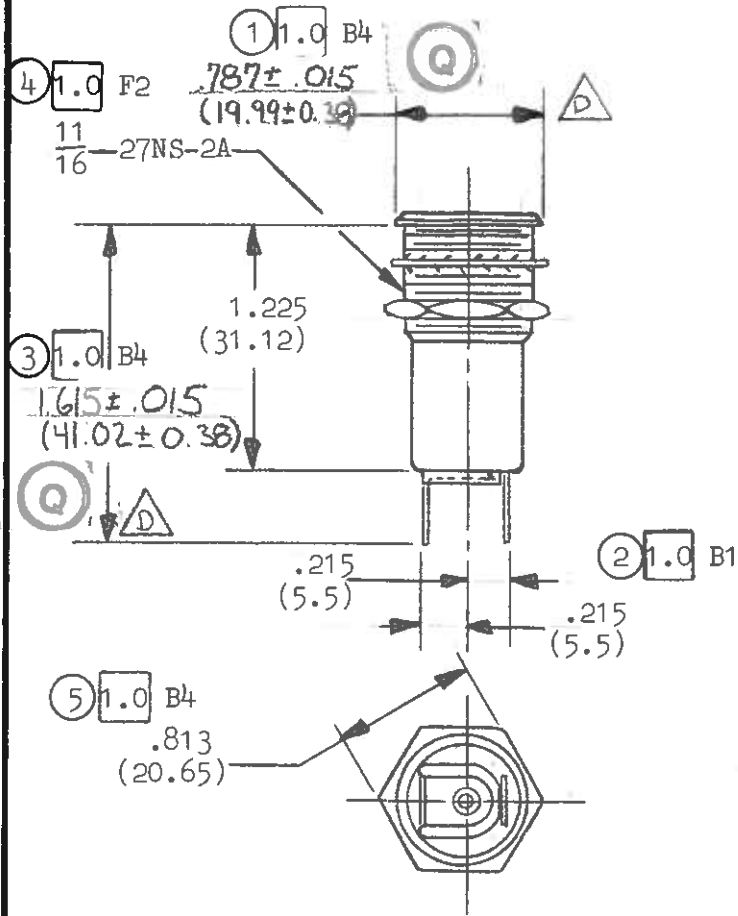


REMOVAL OF THIS DRAWING FROM THE PREMISES OF VCH, INCORPORATED OR ITS UNAUTHORIZED REPRODUCTION IS STRICTLY FORBIDDEN.

VCH, INCORPORATED HAS PROPRIETARY RIGHTS OVER ALL INFORMATION ON THIS DRAWING.



SEE ATTACHED SHEETS.

REVISIONS

ISSUE	DESCRIPTION	DATE	APPROVAL
-------	-------------	------	----------

- 4. PARTS ARE PACKED INDIVIDUALLY IN PLASTIC BAGS WITH HARDWARE UNASSEMBLED.
 - 3. MATERIALS AND FINISHES.
BEZEL: STAINLESS STEEL.
HOUSING: GLASS-FILLED POLYESTER.
LOCKWASHER AND NUT: ZINC PLATED STEEL.
 - 2. MTG. DIAMETER IS .688" (17.48) ON .969" (24.61) CENTERS.
 - 1. THIS SHEET IS FOR PUBLICATION PURPOSES ONLY.
- NOTES.

Superseded by Drawing #
B14668 Rev D



INTERNATIONAL
CHICAGO MINIATURE BRAND

VCH, Inc.
Chevy Chase Business Park
1080 Johnson Drive
Buffalo Grove, IL 60089
312/459-3400
FAX: 312-459-2708
TELEX: 9102215445

MATERIAL

TOLERANCE EXCEPT AS NOTED	
3 PLACE DEC. ± .015	FRACT. ±
2 PLACE DEC. ± .020	ANGLES ±
DIMENSIONS IN PARENTHESES ARE IN mm	

DRAWN E. R. R.	DATE 1/4/88
CHECKED [Signature]	1/11/88
ENGINEER [Signature]	1/17/88
APPROVED [Signature]	1/21/88

INDICATOR LIGHT, STANDARD,
MINIATURE BAYONET

5100 SERIES

SCALE 1X

ER No. 65489

4G0001
SHEET 1 OF 4

B14668 REV. D/1

507149

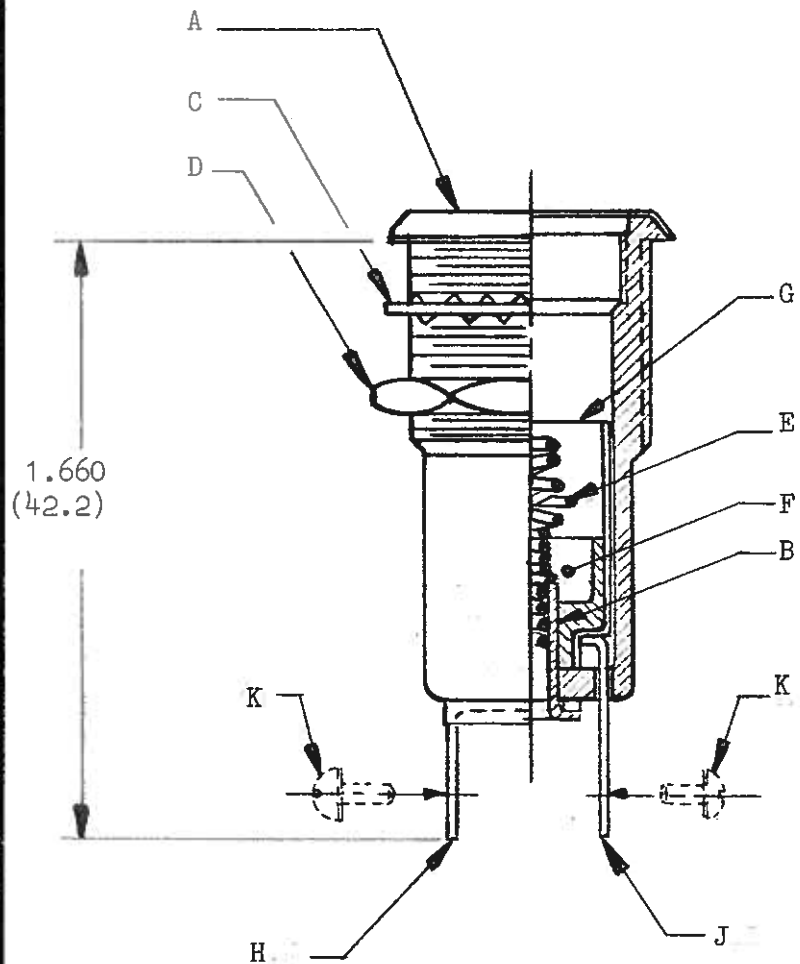
REMOVAL OF THIS DRAWING FROM THE PREMISES OF VCH, INCORPORATED OR ITS UNAUTHORIZED REPRODUCTION IS STRICTLY FORBIDDEN.
VCH, INCORPORATED HAS PROPRIETARY RIGHTS OVER ALL INFORMATION ON THIS DRAWING.

REVISIONS

ISSUE	DESCRIPTION	DATE	APPROVAL
-------	-------------	------	----------

NOTE: (6) 1.0 G1

1. THIS SHEET IS FOR MANUFACTURING PURPOSES ONLY.
2. PARTS ARE TO BE INDIVIDUALLY PACKAGED IN PLASTIC BAGS WITH HARDWARE UNASSEMBLED.



(7) .65 G1

SPECIAL REQUIREMENTS: THE FOLLOWING NOTES PERTAIN TO SPECIFIC INDICATORS ONLY. SEE SPECIAL REQUIREMENTS COLUMN FOR APPLICABLE ITEMS.

- A. PARTS ARE TO BE STAMPED WITH THE FOLLOWING: CATALOG NUMBER, 3W-125V, DATE CODE, UL LISTING LOGO, AND CSA MARKING. BAG IS TO BE LABELED WITH UL LISTING LOGO, CATALOG NUMBER, AND DATE CODE.
- B. PARTS ARE TO BE STAMPED WITH THE FOLLOWING: CATALOG NUMBER, 3W-125V, DATE CODE, **AJ**, AND CSA MARKING. BAG IS TO BE LABELED WITH UL RECOGNIZED LOGO, CATALOG NUMBER, AND DATE CODE.
- C. PARTS ARE TO BE STAMPED WITH THE FOLLOWING: CATALOG NUMBER, 1/2W-125V, 25K, DATE CODE, UL LISTING LOGO, AND CSA MARKING. BAG IS TO BE LABELED WITH UL LISTING LOGO, CATALOG NUMBER, AND DATE CODE.
- D. PARTS ARE TO BE STAMPED WITH THE FOLLOWING: CATALOG NUMBER, 1/2W-125V, 25K, DATE CODE, **AJ**, AND CSA MARKING. BAG IS TO BE LABELED WITH UL RECOGNIZED LOGO, CATALOG NUMBER, AND DATE CODE.
- E. PARTS ARE TO BE STAMPED WITH THE FOLLOWING: CATALOG NUMBER, 7/10W-250V, 100K, DATE CODE, UL LISTING LOGO, AND CSA MARKING. BAG IS TO BE LABELED WITH UL LISTING LOGO, CATALOG NUMBER, AND DATE CODE.
- F. PARTS ARE TO BE STAMPED WITH THE FOLLOWING: CATALOG NUMBER, 7/10W-250V, 100K, DATE CODE, **AJ**, AND CSA MARKING. BAG IS TO BE LABELED WITH UL RECOGNIZED LOGO, CATALOG NUMBER, AND DATE CODE.

LTR	I.P. NUMBER	QTY	DESCRIPTION

Superseded by Drawing #
B14668 Rev D

VCH, Inc.
Chevy Chase Business Park
1080 Johnson Drive
Buffalo Grove, IL 60089
312/459-3400
FAX: 312-459-2708
TELEX: 9102215445

MATERIAL

TOLERANCE EXCEPT AS NOTED	
3 PLACE DEC. ± .015	FRACT. ± _____
2 PLACE DEC. ± _____	ANGLES ± _____
DIMENSIONS IN PARENTHESES ARE IN mm	

DRAWN: *R.P.H.*
DATE: 1/4/88
CHECKED: *R.J.W.*
DATE: 1/21/88
ENGINEER:
APPROVED: *R.J.W.*
DATE: 1/21/88

INDICATOR LIGHT, STANDARD
MINIATURE BAYONET
5100 SERIES
SCALE: NTS
ER No. 65489

vch

INTERNATIONAL
CHICAGO MINIATURE BRAND

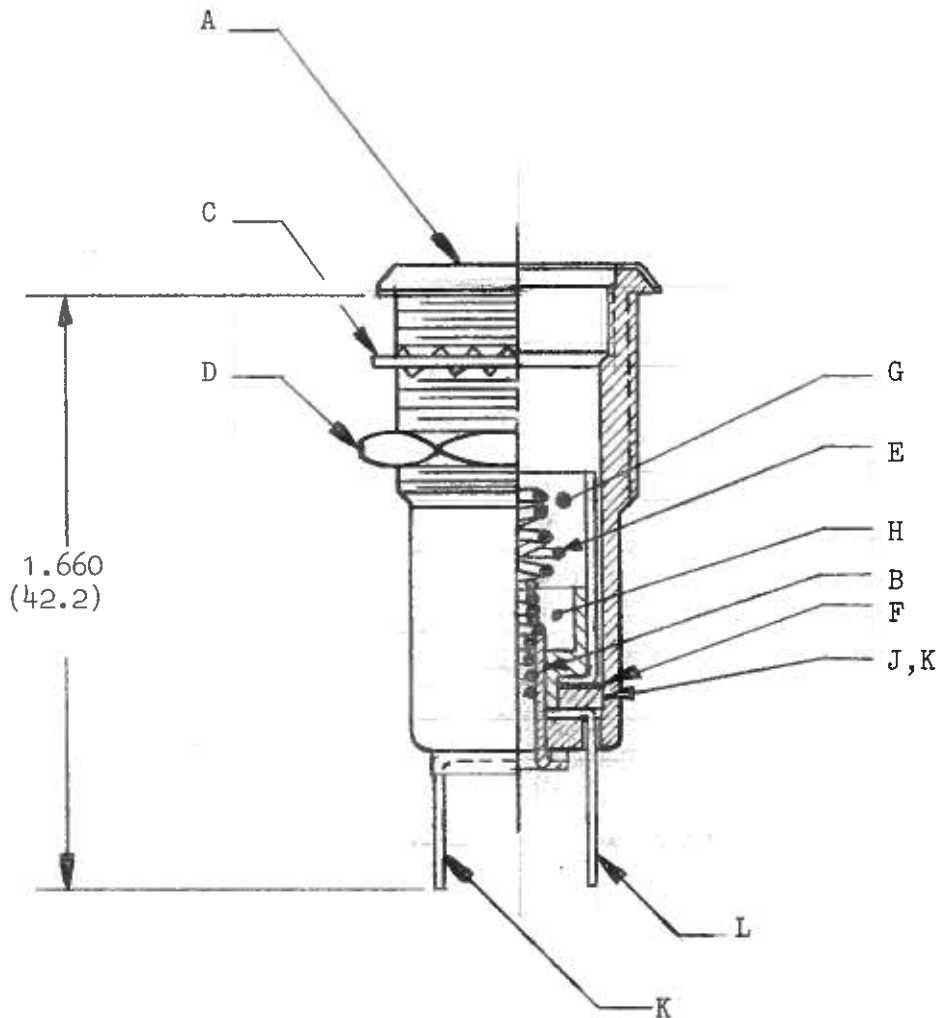
4GQ01
SHEET 2 OF 4

REMOVAL OF THIS DRAWING FROM THE PREMISES OF VCH, INCORPORATED OR ITS UNAUTHORIZED REPRODUCTION IS STRICTLY FORBIDDEN.

VCH, INCORPORATED HAS PROPRIETARY RIGHTS OVER ALL INFORMATION ON THIS DRAWING.

NOTE: $\text{\textcircled{6}}$ 1.0 G1

1. THIS SHEET IS FOR MANUFACTURING PURPOSES ONLY.
2. PARTS ARE TO BE INDIVIDUALLY PACKAGED IN PLASTIC BAGS WITH HARDWARE UNASSEMBLED.



$\text{\textcircled{7}}$.65 G1

SPECIAL REQUIREMENTS: THE FOLLOWING NOTES PERTAIN TO SPECIFIC INDICATORS ONLY. SEE SPECIAL REQUIREMENTS COLUMN FOR APPLICABLE ITEMS.

- PARTS ARE TO BE STAMPED WITH THE FOLLOWING: CATALOG NUMBER, 3W-125V, DATE CODE, UL LISTING LOGO, AND CSA MARKING. BAG IS TO BE LABELED WITH UL LISTING LOGO, CATALOG NUMBER, AND DATE CODE.
- PARTS ARE TO BE STAMPED WITH THE FOLLOWING: CATALOG NUMBER, 3W-125V, DATE CODE, $\text{\textcircled{A}}$, AND CSA MARKING. BAG IS TO BE LABELED WITH UL RECOGNIZED LOGO, CATALOG NUMBER, AND DATE CODE.
- PARTS ARE TO BE STAMPED WITH THE FOLLOWING: CATALOG NUMBER, 1/2W-125V, 25K, DATE CODE, UL LISTING LOGO, AND CSA MARKING. BAG IS TO BE LABELED WITH UL LISTING LOGO, CATALOG NUMBER, AND DATE CODE.
- PARTS ARE TO BE STAMPED WITH THE FOLLOWING: CATALOG NUMBER, 1/2W-125V, 25K, DATE CODE, $\text{\textcircled{A}}$, AND CSA MARKING. BAG IS TO BE LABELED WITH UL RECOGNIZED LOGO, CATALOG NUMBER, AND DATE CODE.
- PARTS ARE TO BE STAMPED WITH THE FOLLOWING: CATALOG NUMBER, 7/10W-250V, 100K, DATE CODE, UL LISTING LOGO, AND CSA MARKING. BAG IS TO BE LABELED WITH UL LISTING LOGO, CATALOG NUMBER, AND DATE CODE.
- PARTS ARE TO BE STAMPED WITH THE FOLLOWING: CATALOG NUMBER, 7/10W-250V, DATE CODE, $\text{\textcircled{A}}$, AND CSA MARKING. BAG IS TO BE LABELED WITH UL RECOGNIZED LOGO, CATALOG NUMBER, AND DATE CODE.

ISSUE	DESCRIPTION	DATE	APPROVAL
L		1	LUG
	20740924		FASTON, 5100-834, 5100-844
	20700727		SOLDER, 5100-832, 5100-842
K		1	LUG
	20940820		FASTON, 5100-834, 5100-844
	20900829		SOLDER, 5100-832, 5100-842
J		1	RESISTOR
	21351043		100K Ω , 5100-844, 5100-842
	21352533		25K Ω , 5100-834, 5100-832
H	20361194	1	BUSHING
G	20511020	1	SHELL
F	20840513	1	SPRING WASHER
E	21090340	1	SPRING
D	21730301	1	HEX NUT
C	20880911	1	LOCKWASHER
B	20041024	1	EYELET
A	30300101	1	HOUSING, SUB-ASSEMBLY
LTR	I. P. NUMBER	QTY.	DESCRIPTION

LIST OF MATERIALS

Superseded by Drawing #
B14668 Rev D

vch

INTERNATIONAL
CHICAGO MINIATURE BRAND

VCH, Inc.
Chevy Chase Business Park
1080 Johnson Drive
Buffalo Grove, IL 60089
312/459-3400
FAX: 312-459-2708
TELEX: 9102215445

MATERIAL

TOLERANCE EXCEPT AS NOTED

3 PLACE DEC. \pm .015	FRACT. \pm _____
2 PLACE DEC. \pm _____	ANGLES \pm _____

DIMENSIONS
IN PARENTHESES
ARE IN mm

DRAWN <i>R. R. H.</i>	DATE 1/4/88
CHECKED <i>CPW</i>	1/21/88
ENGINEER	
APPROVED <i>CPW</i>	1/21/88

INDICATOR LIGHT, STANDARD
MINIATURE BAYONET

5100 SERIES

SCALE NTS ER No. 65489

4GQ001

SHEET 3 OF 4

B14668 REV. D

(8) ~~65~~ C4 (FOR INTERNAL RESISTORS)

REMOVAL OF THIS DRAWING FROM THE PREMISES OF VCH, INCORPORATED OR ITS UNAUTHORIZED REPRODUCTION IS STRICTLY FORBIDDEN.

VCH, INCORPORATED HAS PROPRIETARY RIGHTS OVER ALL INFORMATION ON THIS DRAWING.

DASH NO.	CATALOG NUMBER	I. P. NUMBER	INTERNAL RESISTOR (KΩ)	DESCRIPTION	SPECIAL REQ.	REVISIONS			
						ISSUE	DESCRIPTION	DATE	APPROVAL
01	5100-822	04601000		FOR INCANDESCENT LAMPS, SOLDER LUGS	A	A	ER66071	3/12/90	<i>[Signature]</i>
02	5100-823	04602000		FOR INCANDESCENT LAMPS, SCREW LUGS	A	B	16498 KB ADDED P/N 5105-822	6/26/98	<i>[Signature]</i>
03	5100-824	04603000		FOR INCANDESCENT LAMPS, .250 QUICK CONNECT LUGS	B	C	17002 KB ADDED Q's	10/22/98	<i>[Signature]</i>
04	5100-832	04604000	25	FOR B2A NEON LAMP, 125VAC, SOLDER LUGS	C	D	17268 KB R'MVD SPEC. REQ	12/11/98	<i>[Signature]</i>
05	5100-834	04605000	25	FOR B2A NEON LAMP, 125VAC, .250 QUICK CONNECT LUGS	D				
06	5100-842	04606000	100	FOR B2A NEON LAMP, AT 250VAC, B1A AT 125VAC, SOLDER LUGS	E				
07	5100-844	04607000	100	FOR B2A NEON LAMP, AT 250VAC, B1A AT 125VAC, .250 QUICK CONNECT LUGS	F				
	5105-822			FOR INCANDESCENT LAMPS, NO BEZEL, SOLDER LUGS	A				



Superseded by Drawing #
B14668 Rev D

vch

VCH, Inc. Chevy Chase Business Park 1080 Johnson Drive Buffalo Grove, IL 60089 312/459-3400 FAX: 312-459-2708 TELEX: 9102215445	MATERIAL	TOLERANCE EXCEPT AS NOTED 3 PLACE DEC. ± 2 PLACE DEC. ±	FRACT. ± ANGLES ±	DRAWN <i>S.R.Z.</i> DATE 1/13/88	INDICATOR LIGHT, STANDARD MINIATURE BAYONET	<div style="text-align: center; font-weight: bold; font-size: 1.2em;">INTERNATIONAL</div> CHICAGO MINIATURE BRAND 4G001 SHEET 4 OF 4	
		DIMENSIONS IN PARENTHESES ARE IN mm		CHECKED <i>R/W</i> ENGINEER			DATE 1/21/88
				APPROVED <i>R/W</i>			DATE 1/21/88
				SCALE _____	ER No. 65489		

B14668 REV.D

507149