

DENOTES CRITICAL DIMENSION FOR INSPECTION

- NOTES:-
 1. MATERIAL: SEE TABLE
 2. FINISH: GOOD POLISH ALL OVER
 3. GEN. WALL THK. 1mm
 4. GEN DRAFT ANGLE 2 DEG.

PART No.	DESCRIPTION
10119	BLACK POLYCARBONATE
10120	CLEAR POLYCARBONATE
10121	WHITE POLYCARBONATE

©2007 CARCLO
 ALL DIMENSIONS IN mm

ISS.	DATE	E.C.N.	DESCRIPTION
1	24-Mar-05		FIRST ISSUE
2	14-Jun-05		RE-DESIGNED
3	28-Sep-05		C1- 7.55 WAS 8.0 D3- 7.55 WAS 8.0 A2- 8.65 WAS 9.0 B1- 21.58 +/-0.15 WAS +/-0.2 D3- 7.4 ADDED
4	10-Oct-05		A2- 8.80 WAS 8.65 D3- 7.55 WAS 7.40
5	19-Oct-05		A6- 13.35 WAS 13.85 (FOCUS IMPROVEMENT)
6	21-May-07		TOP CLIP WIDEND TO 11.5 & 0.3 CHAMFER ADDED
7	21-May-08		CUT OUT IN BASE REMOVED



CTP-COIL
 111 BUCKINGHAM AVE, SLOUGH
 SL1 4PF, ENGLAND
 TEL: +44 1753 575011 FAX: +44 1753 811359
 email:design@coil.co.uk

GENERAL TOLERANCES (UNLESS STATED)

LINEAR	ANGULAR
X +/- 0.25	X +/- 1°
X.X +/- 0.1	X.X +/- 0.5°
X.XX +/- 0.05	X.XX +/- 0.1°

CUSTOMER

TITLE
 HOLDER FOR 20mm
 OPTIC & LUXEON K2 LED

DRAWN RJL DATE 24-Mar-05

CHK'D DATE

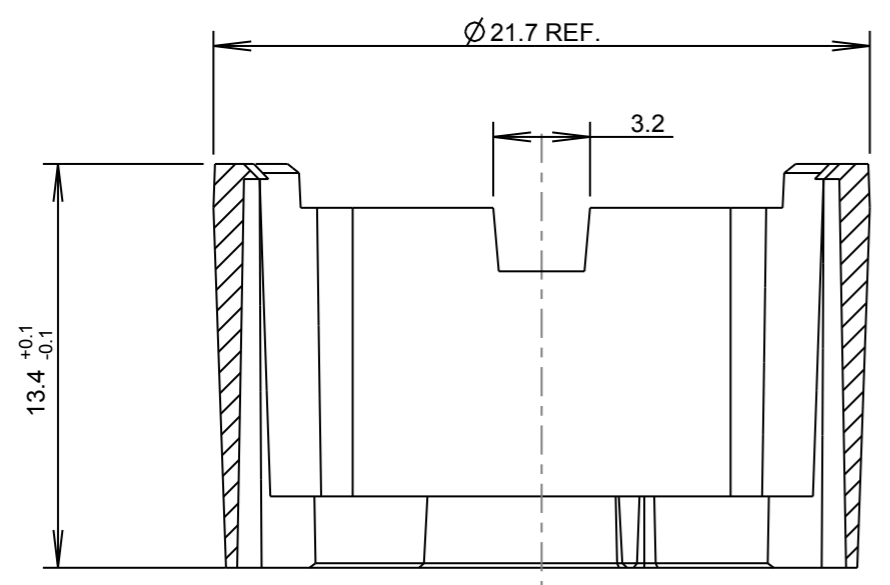
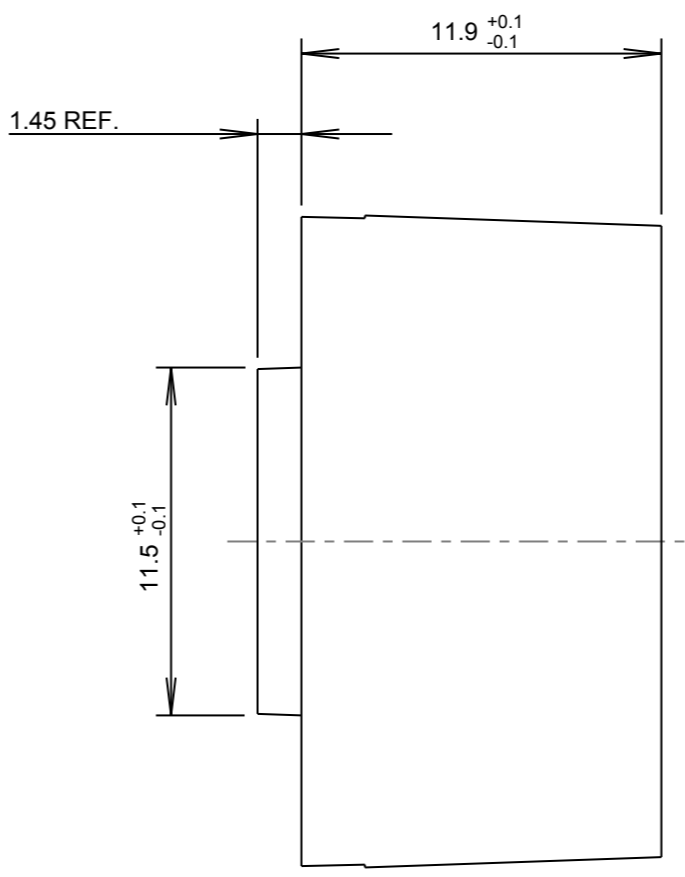
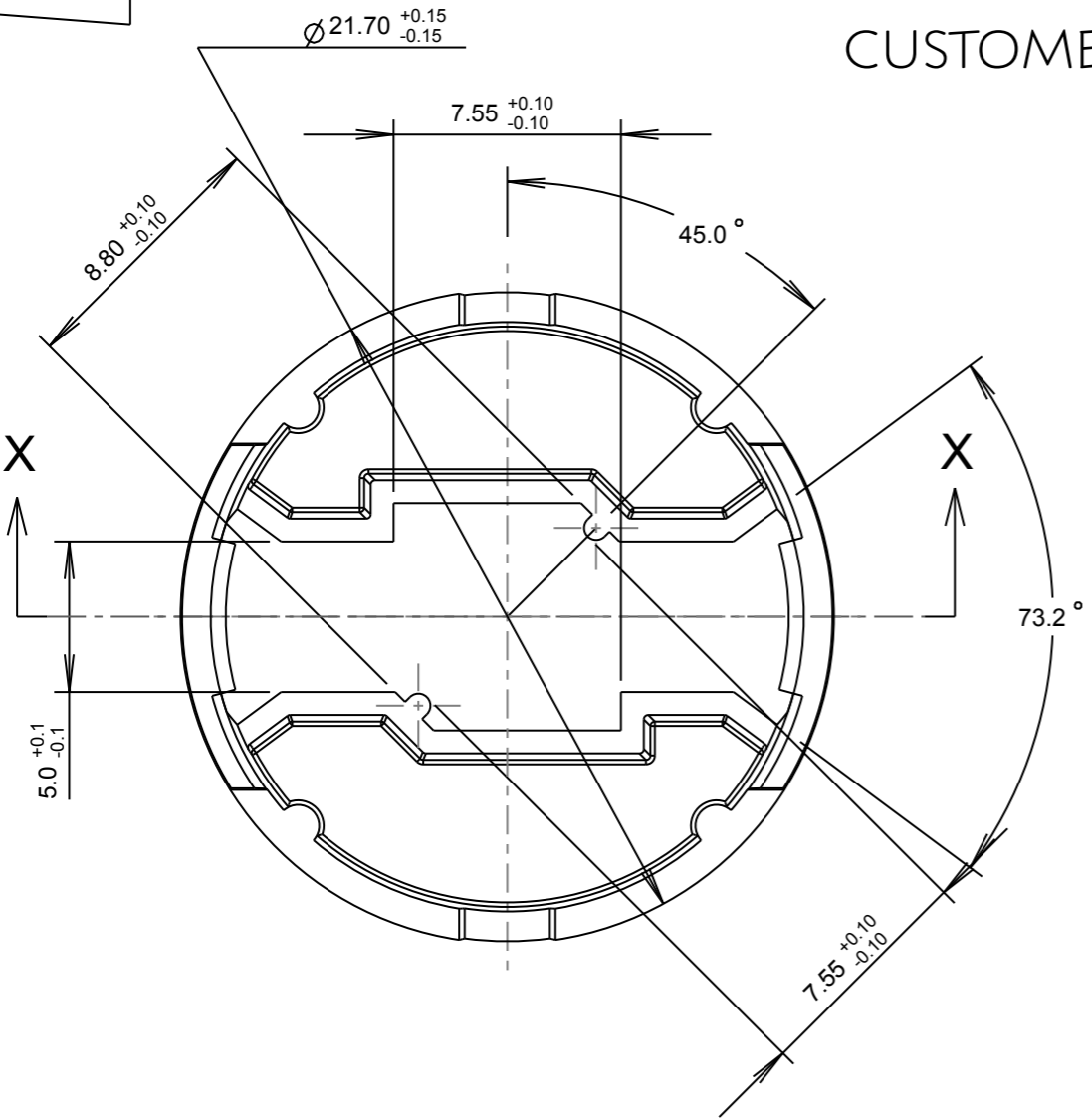
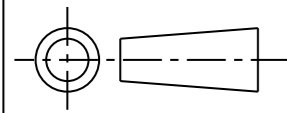
APP'D DATE

SCALE 4:1 COIL PART No. SEE TABLE

SIZE A3 COIL DRG. No. 60402 SHEET 1 OF 2

CUSTOMER DRAWING

©2007 CARCLO
ALL DIMENSIONS IN mm



SECTION X-X

PART No.	DESCRIPTION
10119	BLACK POLYCARBONATE
10120	CLEAR POLYCARBONATE
10121	WHITE POLYCARBONATE

ISS.	DATE	E.C.N.	DESCRIPTION
7	23-May-08		CUT OUT IN BASE REMOVED. SHEET 2 ADDED.



CARCLO TECHNICAL PLASTICS (SLOUGH)
111 BUCKINGHAM AVE, SLOUGH
SL1 4PF, ENGLAND
TEL: +44 1753 575011 FAX: +44 1753 811359
email: design@carclo-optics.com

GENERAL TOLERANCES (UNLESS STATED)

LINEAR	ANGULAR
X +/- 0.25	X +/- 1°
X.X +/- 0.1	X.X +/- 0.5°
X.XX +/- 0.05	X.XX +/- 0.1°

CUSTOMER
LUXEON

TITLE
HOLDR FOR 20mm
OPTIC & LUXEON K2 LED

DRAWN M.K. DATE 23-May-08

CHK'D DATE

APP'D DATE

SCALE 4:1 CARCLO PART No. SEE TABLE

SIZE A3 CARCLO DRG. No. 60402 SHEET 2 OF 2