

PVA

Short Stroke Key Switches

Features/Benefits

- Compact design
- Short stroke to latch
- Wide variety of actuator heights and styles
- Adapted for medium power applications
- RoHS compliant and compatible

Typical Applications

- Automotive (air conditioning, lighting)
- Video, remote controls
- Electronic games



Construction

FUNCTION: Momentary, Push-Push
 CONTACT ARRANGEMENT:¹
 PVA1: 2 make contacts (DPST)
 PVA2: 2 change over contacts (DPDT)
 SWITCHING MODE: Non-shorting
 TERMINALS: PC pins²

Mechanical

TOTAL TRAVEL / LATCHING TRAVEL:
 OA: 2,4± 0,2 (0.094 ± 0.008)
 EE: 2,4± 0,2 (0.094 ± 0.008)/ 1,5 (0.059)
 OPERATING FORCE: 1.2 ± .25 (120 grams);
 1.7 ± .25 (170 grams); 3.5 ± .25 (350 grams)

Process

SOLDERABILITY:
 Wave soldering, compatible with lead free soldering profile
 Hand soldering, 350°C for 3 seconds

Note: Specifications listed above are for switches with standard options.
 For information on specific and custom switches, consult Customer Service Center.

Electrical

SWITCHING POWER MAX.: 3 W DC
 SWITCHING VOLTAGE MAX.: 32 V DC
 SWITCHING CURRENT MAX.: 100 mA DC*
 DIELECTRIC STRENGTH (50 Hz / 1 min):
 1000 V between open contacts, PVA2: 750 V
 OPERATING LIFE:
 OA (momentary): ≥ 1 x 10⁵ operations
 EE (push-push): ≥ 1 x 10⁵ operations
 CONTACT RESISTANCE: Initial ≤ 100 mΩ
 After life: 150 mΩ
 INSULATION RESISTANCE: ≥ 10¹⁰ Ω
 BOUNCE TIME: ≤ 3 ms

Environmental

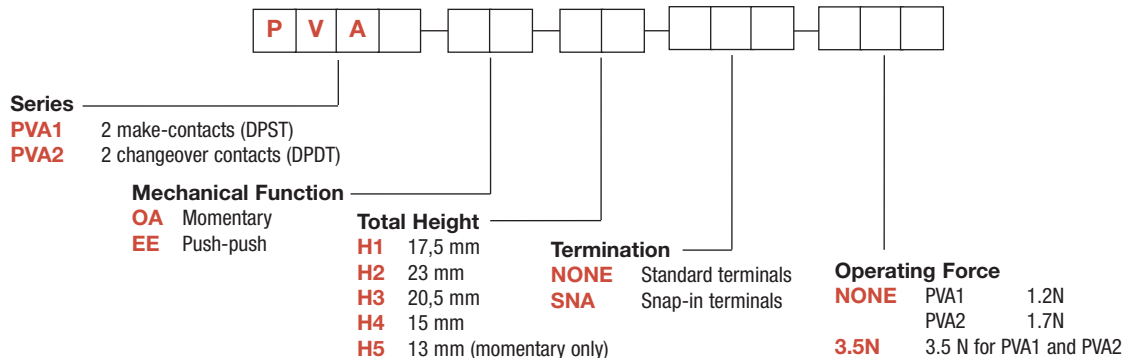
OPERATING TEMPERATURE: -40°C to 85°C.³

- 1) Other contact arrangements available by request
 - 2) "Snap-in" contacts on request, Version SNA with pins bent inside (standard)
 - 3) With button +70°C
- * By 13,8 VDC, the PVA supports a peak current of 500 mA and a continuous current of 200 mA.

How To Order

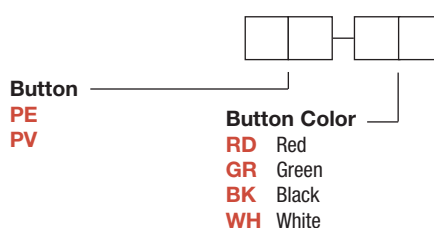
Our easy build-a-switch concept allows you to mix and match options to create the switch you need. To order, select desired option from each category and place it in the appropriate box. **Some of the configurations may not be available or could require some development.**

Switch



Button

Buttons must be ordered separately.
 Shipped in bulk.



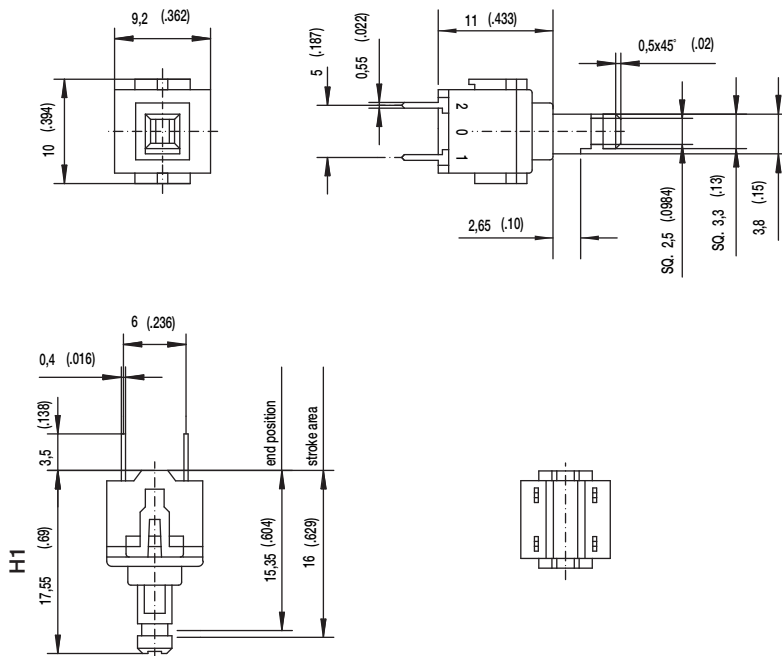
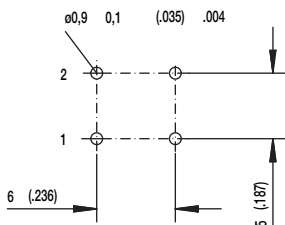
Dimensions are shown: mm (inch)
 Specifications and dimensions subject to change



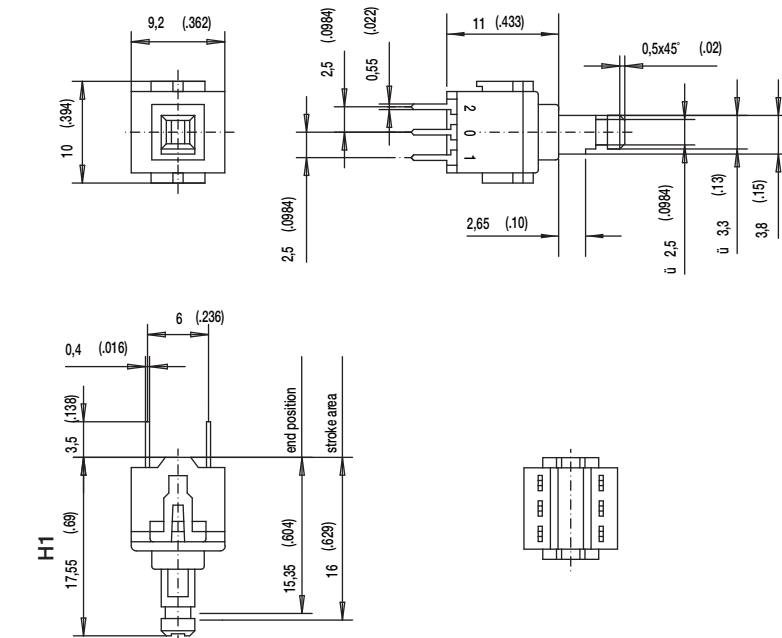
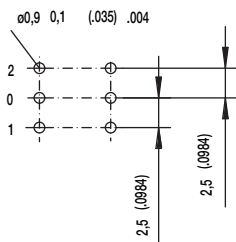
PVA Short Stroke Key Switches

SERIES

PVA1 (DPST)



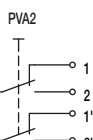
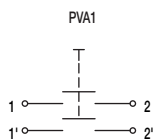
PVA2 (DPDT)



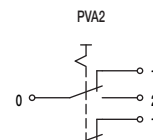
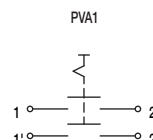
MECHANICAL FUNCTION

OPTION CODE	FUNCTION
OA	Momentary
EE	Push-Push

OA



EE



First Angle Projection

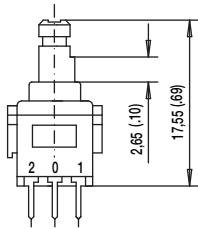
Dimensions are shown: mm (inch)
Specifications and dimensions subject to change



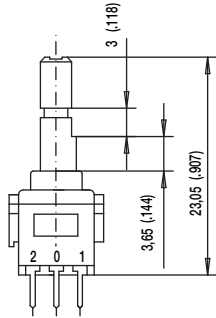
PVA Short Stroke Key Switches

TOTAL HEIGHT

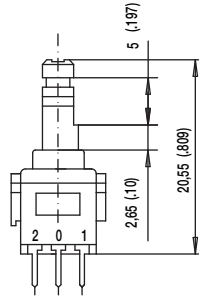
H1 17,5 MM



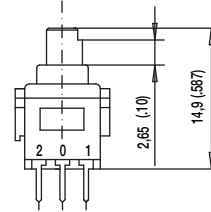
H2 23 MM



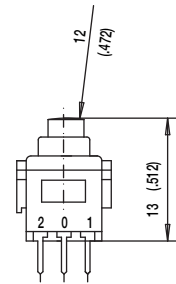
H3 20,5 MM



H4 15 MM

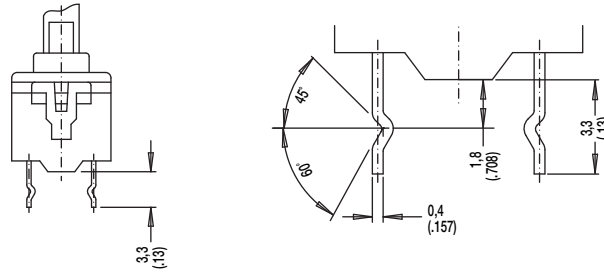


H5 13 MM
(MOMENTARY ONLY)



TERMINATION

SNA



OPERATING FORCE

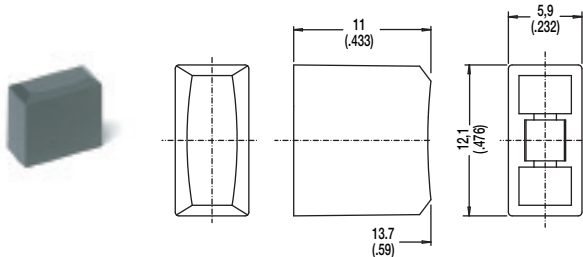
NONE PVA1 1.2 N
PVA2 1.7 N

3.5N 3.5 NEWTONS PVA1 & PVA2

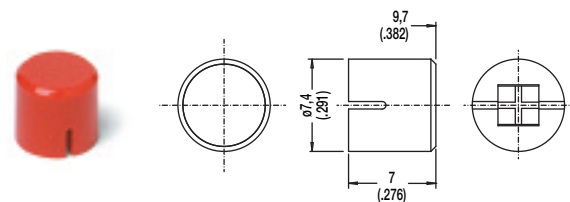
BUTTONS

BUTTONS MUST BE ORDERED SEPARATELY. SHIPPED IN BULK.

PE



PV



OPTION CODE	COLOR
RD	Red
GY	Gray
BK	Black
WH	White



Dimensions are shown: mm (inch)
Specifications and dimensions subject to change



Key Switches