

# 8600 Series Microminiature Pushbutton Switches



## Features/Benefits

- Available with overtravel
- Normally closed models available
- Microminiature size ideal for applications where space is limited
- RoHS compliant

## Typical Applications

- Detection
- Telecommunications and networking equipment
- Computers and peripherals



Models Available

## Specifications

**CONTACT RATING:** Q contact material (8631, 8632 Models): 500 mA @ 120 V AC or 28 V DC; 250 mA @ 250 V AC; (8633 Model): 250 mA @ 120 V AC or 28 V DC; 125 mA @ 250 V AC. See page A-73 for additional ratings.

### ELECTRICAL LIFE:

8631 and 8633 MODELS: 250,000 actuations at full load.  
8632 MODEL: 100,000 actuations at full load.

**CONTACT RESISTANCE:** Below 30 mΩ typ. initial @ 2-4 V DC, 100 mA, for both silver and gold plated contacts.

**INSULATION RESISTANCE:** 109 Ω min.

**DIELECTRIC STRENGTH:** 500 Vrms min. @ sea level.

**OPERATING TEMPERATURE:** -30°C to 65°C.

**SOLDERABILITY:** Per MIL-STD-202F method 208D, or EIA RS-186E method 9.

## Materials

**CASE:** Glass filled phenolic or diallyl phthalate (DAP), (UL94V-0).

**PLUNGER:** Glass filled nylon (UL94V-0), black standard.

**BUSHING:** Brass, nickel plated.

**CONTACTS:** Q contact material: Coin silver, silver plated.  
See page A-73 for additional contact materials.

### TERMINALS:

8631, 8632 MODELS: Copper alloy, silver plated.

8633 MODEL: Q contact material: Coin silver.

See page A-73 for additional contact materials.

### TERMINAL SEAL:

8633 MODEL: Epoxy.

8631, 8632 MODELS: Terminals insert molded.

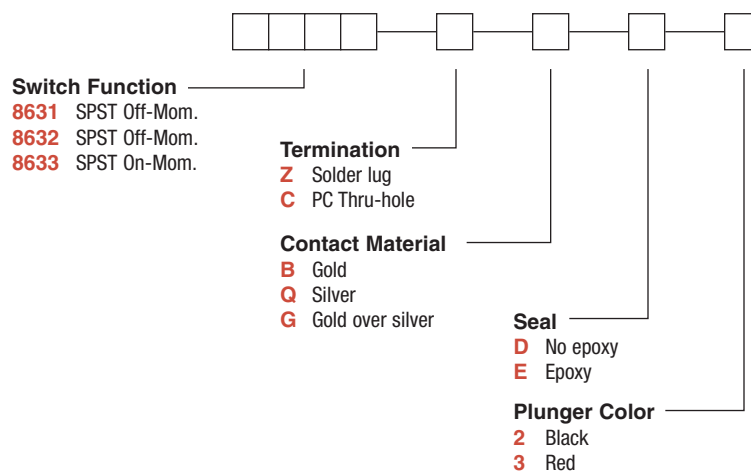
**HARDWARE:** Nut: Brass, nickel plated.

**NOTE:** Any models supplied with Q, B or G contact material are RoHS compliant.

**NOTE:** Specifications and materials listed above are for switches with standard options. For information on specific and custom switches, consult Customer Service Center.

## Build-A-Switch

To order, simply select desired option from each category and place in the appropriate box. Available options are shown and described on pages A-72 and A-73. For additional options not shown in catalog, consult Customer Service Center.



Dimensions are shown: Inches (mm)  
Specifications and dimensions subject to change



# 8600 Series Microminiature Pushbutton Switches

## SWITCH FUNCTION



A

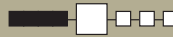
Pushbutton

NO. POLES	MODEL NO.	SWITCH FUNCTION		TOTAL TRAVEL	ACTUATION FORCE	SCHEMATIC
		POS. 1	POS. 2			
SP	<b>8631</b>	OFF	MOM.	.040 (1,02) TYP.	5 oz (140g) TYP.	N.O.
<b>SPST</b> <p>Part number shown: 8631ZQD2</p> <p>Terminals Insert Molded</p>						
SP	<b>8632</b>	OFF	MOM.	.106 (2,69) TYP. with overtravel .024 (0,61) TYP.	6.25 oz (177g) TYP.	N.O. with overtravel
<b>SPST</b> <p>Part number shown: 8632ZQD2</p> <p>Terminals Insert Molded</p>						
SP	<b>8633</b>	ON	MOM.	.048 (1,22) TYP.	5 oz (140g) TYP.	N.C.
<b>SPST</b> <p>Part number shown: 8633ZQE2</p>						

MOM. = Momentary

NOTE: Caps available for plunger options, see page A-73.

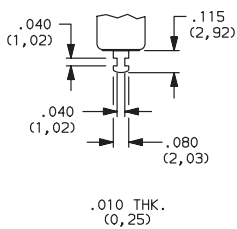
## TERMINATIONS



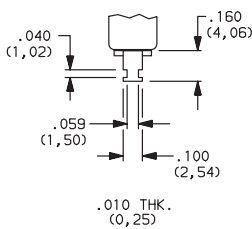
**Z** SOLDER LUG

**C** PC THRU-HOLE

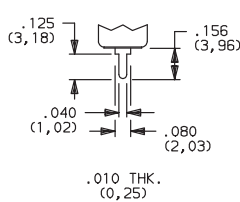
8631, 8632 models only.



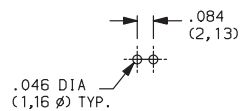
8633 models only.



8631, 8632 models only.



PC MOUNTING



Third Angle Projection  
Dimensions are shown: Inches (mm)  
Specifications and dimensions subject to change

**C&K**

# 8600 Series Microminiature Pushbutton Switches



A

Pushbutton

## CONTACT MATERIAL

OPTION CODE	RoHS COMPLIANT *	RoHS COMPATIBLE *	CONTACT MATERIAL	TERMINAL PLATING	RATINGS	
<b>B</b>	YES	YES	GOLD <sup>1</sup>	GOLD <sup>1</sup>	LOW LEVEL/ DRY CIRCUIT	0.4 VA MAX. @ 20 V AC OR DC MAX.
<b>Q</b>	YES	YES	SILVER <sup>4</sup>	SILVER <sup>5</sup>	POWER	8631, 8632 MODELS: 500 mA @ 120 V AC OR 28 V DC; 250 mA @ 250 V AC. 8633 MODELS: 250 mA @ 120 V AC OR 28 V DC; 125 mA @ 250 V AC.
<b>G</b>	YES	YES	GOLD OVER SILVER <sup>4</sup>	GOLD <sup>3</sup>	LOW LEVEL/DRY CIRCUIT OR POWER	0.4 VA MAX @ 20 V AC OR DC MAX. OR 8631, 8632 MODELS: 500 mA @ 120 V AC OR 28 V DC; 250 mA @ 250 V AC. 8633 MODELS: 250 mA @ 120 V AC OR 28 V DC; 125 mA @ 250 V AC.

\* Note: See Technical Data section of this catalog for RoHS compliant and compatible definitions and specifications.

<sup>1</sup> CONTACTS & TERMINALS: Copper alloy, with gold plate over nickel plate.


<sup>2</sup> CONTACTS: Coin silver, with gold plate over nickel plate.

<sup>3</sup> TERMINALS: Copper alloy, with gold plate over nickel plate.  
8633 model only: Coin silver, with gold plate over nickel plate.

<sup>4</sup> CONTACTS: Coin silver, silver plated.

<sup>5</sup> TERMINALS: Copper alloy, silver plated. 8633 model only: coin silver.

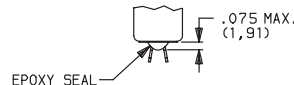
**NOTE:** Any models supplied with Q, B or G contact material are RoHS compliant.

8631, 8632 models  with all options when ordered with G or Q contact material.  
Q contact material standard with C, Z terminations.

## SEAL

**D** NO EPOXY SEAL

**E** EPOXY SEAL



Not available on 8633 model.  
Standard on 8631, 8632 models.

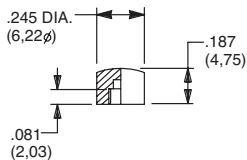
Not available on 8631, 8632 models.  
Standard on 8633 model only.

## PLUNGER COLOR

OPTION CODE	COLOR
<b>2</b>	BLACK
<b>3</b>	RED

## AVAILABLE HARDWARE

Cap



**PART NO.**  
**785101000** WHITE  
**785102000** BLACK  
**785103000** RED

Material: Nylon  
Finish: Gloss

**NOTE:** Other cap colors available, consult Customer Service Center.



Dimensions are shown: Inches (mm)  
Specifications and dimensions subject to change

