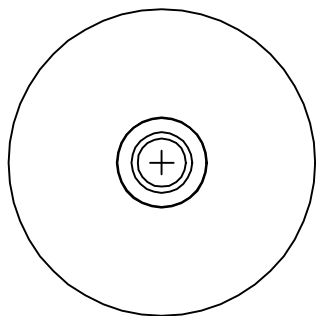
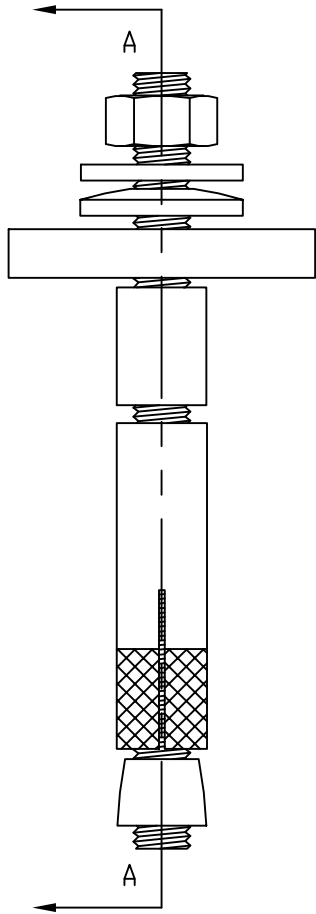
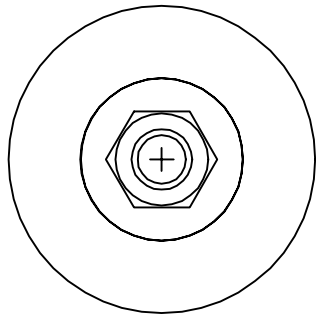


PART  
NAME

SEISMIC ANCHOR KIT

PART  
No.

AK-8850



MATERIAL: STEEL  
FINISH: ZINC PLATE

STUD 7/16-14 x 6.000 LG.

HEX NUT

WASHER

CONE WASHER

LARGE WASHER

SPACER

EXPANSION SLEEVE

SECTION "A-A"

EXPANDER

TENSION TEST

CONCRETE STRENGTH: 3,000 psi  
DEPTH OF EMBEDMENT: 3.15 inches  
AVERAGE TORQUE OF NUT: 59 ft. lbs.  
AVERAGE PULLOUT: 10,192 lbs.

SHEAR TEST

CONCRETE STRENGTH: 3,000 psi  
DEPTH OF EMBEDMENT: 3.15 inches  
AVERAGE TORQUE OF NUT: 59 ft. lbs.  
AVERAGE PULLOUT: 16,251 lbs.

DYNAMIC TEST:

SEQUENCE

INSTALLATION OF ANCHOR INTO 3,000 psi CONCRETE SLAB. SETTING DYNAMIC TEST EQUIPMENT WITH DETERMINED MAXIMUM AND MINIMUM LOAD VALUES. REPEAT LOADING WITH 1 hz.  
AFTER 100,000 RUNS OF DYNAMIC TEST, PULLOUT TEST IS PERFORMED TO CONFIRM THE STRENGTH OF THE ANCHOR.

TEST RESULTS

MAXIMUM LOAD: 3,308 lbs.  
MINIMUM LOAD: 1,345 lbs.  
PULLOUT TEST RESULTS AFTER DYNAMIC TEST: 9,438 lbs.