



PRODUCT, WIRE, CABLE & INDUSTRIAL
IDENTIFICATION

BradyID.com



High-performance
labeling solutions
for the harshest
environments



3" Core Materials - Polyester

Polyester Materials

Polyester labels are widely used for identification based on their mechanical strength, high heat tolerance, general chemical resistance, and compatibility with various protective, functional and aesthetic coatings. Brady polyester materials are designed for use in barcode labeling, traceability, regulatory and compliance, product identification, rating plates, serialization and specimen identification. An all-purpose material, polyester labels can be easily customized to perform in almost any environment.

Printer Compatibility

The following pages contain 3" core label rolls that are designed for use in these printers unless otherwise noted.



NEW BradyPrinter i5100 and legacy IP™ Printer



NEW BradyPrinter i7100 and legacy PR PLUS printer

How to Read a THT Catalog Number

Many Brady label parts follow a naming convention that includes specific information about the label. The following example shows how it can be broken down:

THT – 5 – 422 – 10

Technology:
Thermal Transfer

Die Size:
#5 die
1" x 0.5"

Material:
B-422
Polyester

Quantity:
Multiply by 1,000
10 x 1,000 = 10,000

Material	Print Technology	Color	Finish	Adhesive	Thickness	UL	CSA	RoHS	Applications
B-103	Over-Lam	Clear	Matte	Permanent	1.0 mil			X	Overlaminates tape may be placed on top of printed materials to protect against dirt, chemicals and abrasion.
B-422	Thermal Transfer	White	Gloss	Permanent	4.0 mils	X	X	X	Electronic PCB, component ID, barcode labels, rating plates, solar panel ID. Ideal for rough surface applications.
B-423	Thermal Transfer	White	Gloss	Permanent	3.1 mils	X	X	X	Electronic PCB, component ID, barcode labels, rating plates, solar panel ID.
B-430	Thermal Transfer	Clear	Gloss	Permanent	3.0 mils	X	X	X	Rating and serial plates using alphanumerics, barcodes, graphic symbols and logos that require name plate quality.
B-432	Thermal Transfer	Clear	Gloss	Permanent	4.0 mils	X	X	X	Very similar to B-430, but has a thicker layer of acrylic adhesive for better adherence to rough surface applications.
B-459	Thermal Transfer	White	Matte	Permanent	3.1 mils	X	X	X	Applications requiring high quality/density alphanumerics, barcodes and graphics, such as PCBs and rating plates. Matte version of B-423.
B-461	Thermal Transfer	White/Clear	Gloss	Permanent	1.9 mils			X	Laboratory identification such as vials, centrifuge tubes, test tubes, straws and slides.
B-473	Thermal Transfer	White	Gloss	Permanent	3.4 mils	X	X	X	Printed circuit board and electronic component post-process labeling.
B-481	Thermal Transfer	White	Matte	Permanent	3.3 mils				StainerBondz chemical resistant polyester designed for use in the slide staining process and other lab ID.
B-482	Thermal Transfer	White	Matte	Permanent	4.6 mils			X	Designed for lab tissue cassette labeling and identification. Superior resistance to processing fluids and conditions.
B-483	Thermal Transfer	White	Gloss	Permanent	4.0 mils	X	X	X	For high adhesion to powder coated or textured metals and low surface energy plastics.
B-484	Thermal Transfer	White	Gloss	Permanent	3.0 mils	X		X	Thinner for application to angled or curved surfaces. Also for high adhesion to textured metals and low surface energy plastics.
B-488	Thermal Transfer	White	Gloss	Permanent	3.6 mils	X	X	X	Widely-used high performance polyester label used for component identification, barcoding, asset and inventory tracking.
B-489	Thermal Transfer	White	Matte	Permanent	4.4 mils	X	X	X	For high adhesion to textured metals and low surface energy plastic.
B-490	Thermal Transfer	White	Matte	Permanent	2.1 mils			X	Laboratory identification such as vials, centrifuge tubes, test tubes, straws and slides.
B-492	Thermal Transfer	White	Matte	Permanent	3.2 mils			X	Laboratory identification such as vials, centrifuge tubes, test tubes, straws and slides.
B-533	Thermal Transfer	White	Gloss	Removable	3.0 mils	X		X	Alphanumeric and barcode applications, such as electronic component marking; applications that require good solvent and heat resistance and clean removability.
B-8117	Thermal Transfer	Black	Matte	Permanent	3.5 mils	X			Product, component and asset labeling applications for a variety of surfaces.
B-8423	Thermal Transfer	White	Gloss	Permanent	2.8 mils	X	X	X	General labeling and rating plates.
B-8459	Thermal Transfer	White	Matte	Permanent	2.8 mils	X	X		Economical alternative to B-459. Ideal for general purpose and rating plate applications needing high quality barcoding and graphics.
B-8591	Thermal Transfer	White, Yellow, Silver, Black	Gloss	Permanent	4.3 mils	X			For outdoor labeling applications with proven outdoor durability of 12+ years.

3" Core Materials - Polyester

B-103 Polyester Overlaminating Material

Color: Clear **Finish:** Matte

Clear polyester overlaminate tape recommended for use with most Brady materials. Place tape on top of printed materials to protect against dirt, chemicals and abrasion.

Performance Attributes: 

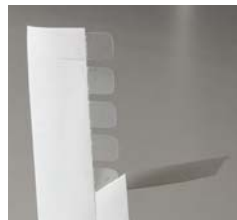
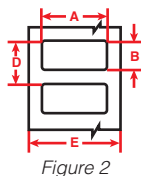


Diagram	Catalog #	Material	Color	Label Width A Inch (mm)	Label Height B Inch (mm)	Vert. Repeat D Inch (mm)	Web Width E Inch (mm)	Labels Per Row	Labels Per Pkg	Rec. Ribbon
Fig. 2	LAM-1-103	Polyester	Clear	0.650 (16.5)	0.200 (5.1)	0.262 (6.7)	0.850 (21.6)	1	5,000	N/A
Fig. 2	LAM-2-103	Polyester	Clear	1.000 (25.4)	0.250 (6.3)	0.312 (7.9)	1.200 (30.5)	1	5,000	N/A
Fig. 2	LAM-5-103	Polyester	Clear	1.000 (25.4)	0.500 (12.0)	0.562 (14.2)	1.200 (30.5)	1	2,000	N/A
Fig. 2	LAM-3-103	Polyester	Clear	1.500 (38.1)	0.250 (6.3)	0.262 (6.7)	1.700 (43.18)	1	5,000	N/A
Fig. 2	LAM-6-103	Polyester	Clear	1.500 (38.1)	0.750 (19.05)	0.812 (20.6)	1.700 (43.18)	1	2,000	N/A
Fig. 2	LAM-7-103	Polyester	Clear	2.000 (50.8)	1.000 (25.4)	1.062 (27.0)	2.200 (55.88)	1	2,000	N/A

B-422 Polyester Material

Color: White **Finish:** Gloss

White material stock with glossy finish and 2 mils of adhesive for rough surface applications, including low surface energy plastics. Designed to withstand solvent exposure. UL rated for surfaces commonly used in solar panel manufacturing. Also used for component identification, barcoding, and asset and inventory tracking.

Performance Attributes: 

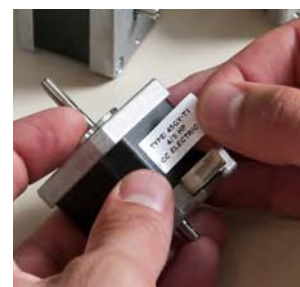
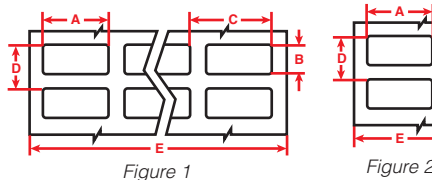


Diagram	Catalog #	Material	Color	Label Width A Inch (mm)	Label Height B Inch (mm)	Web Width E Inch (mm)	Labels Per Row	Labels Per Pkg	Rec. Ribbon
Fig. 1	THT-148-422-10	Polyester	White	0.500 (12.7)	0.375 (9.5)	2.500 (63.5)	4	10,000	R4400, R4900, R6000, R6200
Fig. 1	THT-149-422-10	Polyester	White	0.500 (12.7)	0.500 (12.7)	2.500 (63.5)	4	10,000	R4400, R4900, R6000, R6200
Fig. 1	THT-36-422-10	Polyester	White	0.500 (12.7)	0.200 (5.1)	3.200 (81.3)	5	10,000	R4400, R4900, R6000, R6200
Fig. 1	THT-3-422-10	Polyester	White	1.000 (25.4)	0.375 (9.5)	3.350 (85.1)	3	10,000	R4400, R4900, R6000, R6200
Fig. 1	THT-5-422-10	Polyester	White	1.000 (25.4)	0.500 (12.7)	3.350 (85.1)	3	10,000	R4400, R4900, R6000, R6200
Fig. 2	THT-102-422-10	Polyester	White	1.500 (38.1)	0.370 (9.4)	1.700 (43.2)	1	10,000	R4400, R4900, R6000, R6200
Fig. 1	THT-147-422-10	Polyester	White	1.500 (38.1)	0.375 (9.5)	3.350 (85.1)	2	10,000	R4400, R4900, R6000, R6200
Fig. 1	THT-37-422-10	Polyester	White	1.500 (38.1)	0.500 (12.7)	3.350 (85.1)	2	10,000	R4400, R4900, R6000, R6200
Fig. 2	THT-17-422-3	Polyester	White	2.000 (50.8)	1.000 (25.4)	2.200 (55.9)	1	3,000	R4400, R4900, R6000, R6200
Fig. 2	THT-7-422-3	Polyester	White	2.750 (69.9)	1.250 (31.8)	2.950 (74.9)	1	3,000	R4400, R4900, R6000, R6200
Fig. 2	THT-18-422-3	Polyester	White	3.000 (76.2)	1.000 (25.4)	3.200 (81.3)	1	3,000	R4400, R4900, R6000, R6200
Fig. 2	THT-19-422-1	Polyester	White	3.000 (76.2)	2.000 (50.8)	3.200 (81.3)	1	1,000	R4400, R4900, R6000, R6200
Fig. 2	THT-76-422-1	Polyester	White	4.000 (101.6)	3.000 (76.2)	4.200 (106.7)	1	1,000	R4400, R4900, R6000, R6200

Custom Options Available

Brady offers custom options for many of the materials in this catalog. Our dedicated, experienced custom quoting team can provide pricing for your unique label needs.

Contact Brady Customer Service at 1-888-272-3946 for more information and to order your custom labels.

