

1	2	3	4	5	6	7	8	9
REV.	REMARK	DATE	SIGN.					

MATERIAL:

CONTACT PIN: PHOSPHOR BRONZE SELECTIVE 10 μ " GOLD OVER NICKEL PLATED.

GROUND PIN: COPPER WIRE, TIN PLATED

METAL BODY: ZINC DIE CASTING, NICKEL PLATED

MAIN BODY: VALOX, UL94V-0

CENTER PLASTIC: POLYPROLYLENE, UL94V-0

SPRING CLIP: PHOSPHOR BRONZE, TIN PLATED

ELECTRICAL:

OPERATING VOLTAGE: 500 VOLTS RMS

CONTACT RESISTANCE: 3.0 MILLIOHMS MAX. (GOLD)

FREQUENCY RANGE: 0~1 GHZ

DIELECTRIC WITHSTANDING VOLTAGE: 1500 VOLTS (VAC)

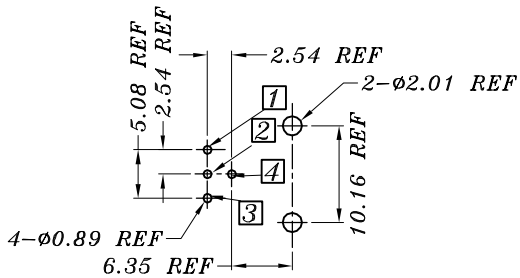
INSULATION RESISTANCE: 5000 MEGAOHMS MIN.

IMPEDANCE NOM.: 50 OHM

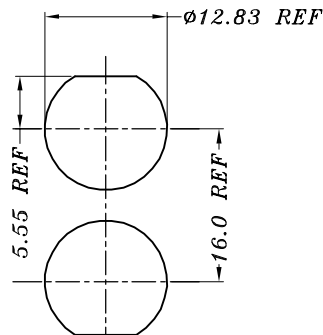
TEMPERATURE RANGE: -55°C TO +105°C

MECHANICAL:

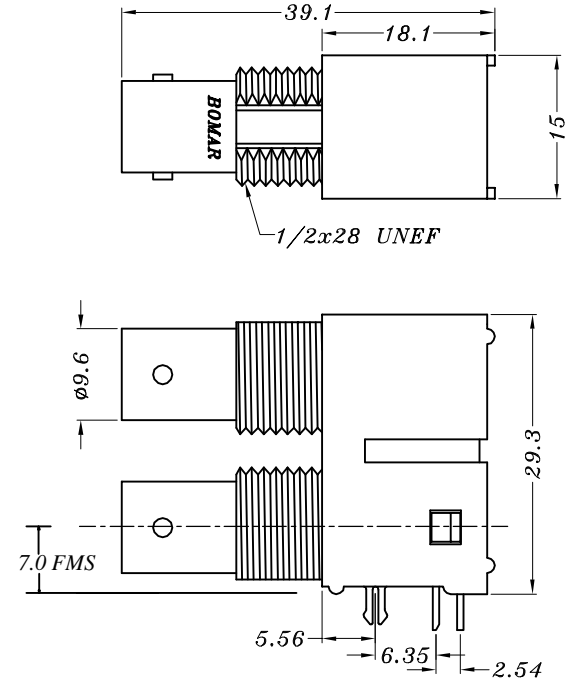
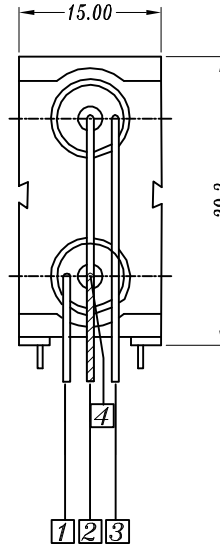
DURABILITY: 500 CYCLES



(DIMENSIONING)
PCB HOLE CONFIGURATION



PANEL CUTOUT



Bomar Interconnect	DESC.	DUAL BNC RIGHT ANGLE 50 OHM			APPROVED	CHECKED	DESIGNED	TOLERANCE	SCALE	1 = 1	UNIT	mm	
	P/N	364A2595	CUSTOMER P/N		BB	SO	BB		DATE	09/03/03	DWG NO.	UDBN\R01A13B	

1	2	3	4	5	6	7	8	9
---	---	---	---	---	---	---	---	---