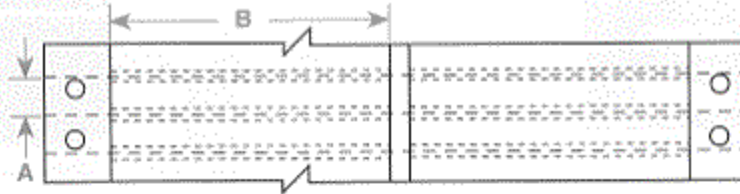




Product #: HCPS1.9-3758W

B-321 Heat-Shrink White Polyolefin



1.90" Sleeve Width

Part Number	Quantity Per Box	Sleeve Height Inch (mm) A	Sleeve Width Inch (mm) B	Range of Wire Dia. Inch (mm)	Approximate Wire Gauge*	Print Lines/Inch
B-319 Non-Shrink White Polyolefin						
CPS19-2508W	2,500	.250 (6.35)	1.90 (48.26)	.030-.100 (.76-2.54)	16-22	8
CPS19-3336W	2,500	.333 (8.38)	1.90 (48.26)	.090-.150 (2.28-3.81)	12-16	6
CPS19-3758W	2,500	.375 (9.53)	1.90 (48.26)	.125-.175 (3.18-4.45)	10-12	8
CPS19-5008W	2,500	.500 (12.70)	1.90 (48.26)	.160-.250 (4.06-6.35)	8-10	6 or 8

Small Quantity Packages: 1.90" sizes are available in 250 piece packages. The part number changes from CPS to SCPS (CPS19-2508W would be SCPS19-2508W). The "S" indicates small package quantities.

B-321 Heat-Shrink White Polyolefin						
HCPS19-2508W	2,500	.250 (6.35)	1.90 (48.26)	.035-.075 (.89-1.90)	16-22	8
HCPS19-3336W	2,500	.333 (8.38)	1.90 (48.26)	.075-.130 (1.90-3.30)	12-16	6
HCPS19-3758W	2,500	.375 (9.53)	1.90 (48.26)	.130-.160 (3.30-4.06)	10-12	8
HCPS19-5008W	2,500	.500 (12.70)	1.90 (48.26)	.160-.235 (4.06-5.97)	8-10	6 or 8
HCPS19-6258W	2,500	.625 (15.87)	1.90 (48.26)	.235-.290 (5.97-7.36)	6-8	8
HCPS19-6676W	2,500	.667 (16.94)	1.90 (48.26)	.290-.335 (7.36-8.51)	4-6	6
HCPS19-7508W	1,500	.750 (19.05)	1.90 (48.26)	.335-.390 (8.51-9.91)	2-4	8
HCPS19-8336W	1,500	.833 (21.15)	1.90 (48.26)	.390-.440 (9.91-11.17)	1-2	6
HCPS19-1008W	1,500	1.00 (25.40)	1.90 (48.26)	.375-.540 (9.53-13.72)	00-1	6 or 8

Small Quantity Packages: 1.90" sizes are available in 250 piece packages. The part number changes from HCPS to HSCPS (HCPS19-2508W would be HSCPS19-2508W). The "S" indicates small package quantities.

B-322 Self-Extinguishing Heat-Shrink White Polyolefin						
SEHCPS19-2508W	2,500	.250 (6.35)	1.90 (48.26)	.035-.075 (.89-1.90)	16-22	8
SEHCPS19-3336W	2,500	.333 (8.38)	1.90 (48.26)	.075-.130 (1.90-3.30)	12-16	6
SEHCPS19-3758W	2,500	.375 (9.53)	1.90 (48.26)	.130-.160 (3.30-4.06)	10-12	8
SEHCPS19-5008W	2,500	.500 (12.70)	1.90 (48.26)	.160-.235 (4.06-5.97)	8-10	6 or 8
SEHCPS19-7508W**	1,500	.750 (19.05)	1.90 (48.26)	.235-.375 (5.97-9.53)	2-4	8
SEHCPS19-1008W**	1,500	1.00 (25.40)	1.90 (48.26)	.375-.540 (9.53-13.72)	00-1	6 or 8