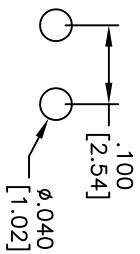
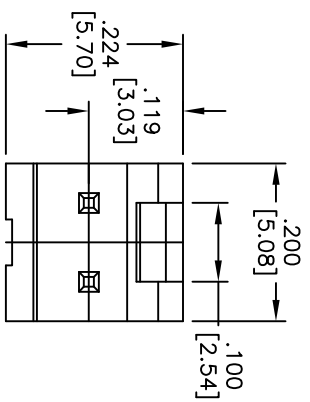
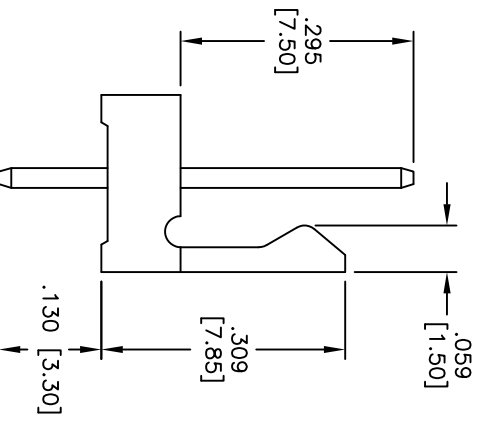
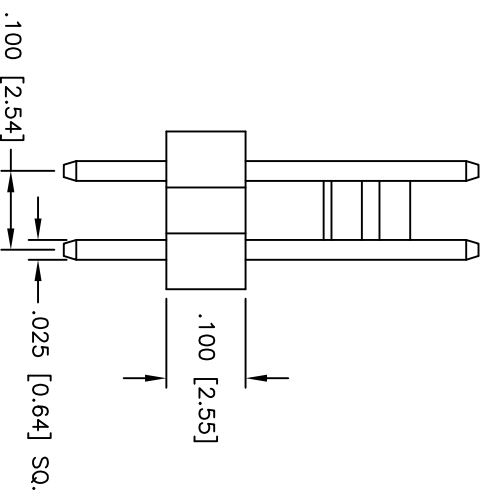


Rev	AWO #	Description	Date	Appr
-		RELEASED	11/12/09	

APPROVED: _____
 DATE: _____ TITLE: _____



RECOMMENDED PCB LAYOUT



SPECIFICATIONS:

Material: Insulator: Nylon 66, glass reinforced, rated UL 94V-0
 Insulator color: Natural
 Contacts: Brass

Plating: Tin over Copper underplate overall

Electrical: Current rating: 2.5 Amps max

Contact resistance: 20 mohms max

Insulation resistance: 1,000 Mohms min

Dielectric withstanding voltage: 250 VAC for 1 minute

Temperature Rating: Operating temperature: -25°C to +85°C

Environmental: Lead free, RoHS compliant
 Recommended soldering temp: 235°C for 5 seconds



ADAM TECH

909 Rahway Avenue, Union, NJ 07083
 Phone: 908-687-5000 Fax: 908-687-5710

TITLE: .100 [2.54] WIRE TO BOARD HEADER
 STRAIGHT, DIP TYPE

UNLESS OTHERWISE SPECIFIED ALL DIMENSIONS ARE INCHES [MM]	
TOLERANCES: EXCEPT AS NOTED	
INCHES	HOLDS
.X ± .10	ØXX ± .10
.XX ± .020	ØXXX ± .015
.XXX ± .015	ØXXXX ± .010
APPROVALS	DATE
DRAWN DY	11/12/09
CHECKED	
APPROVED	

REF: S00089T	SCALE: NTS	SHEET 1 OF 1
SIZE X	PART NO. LHT-XX-TS	REV. -