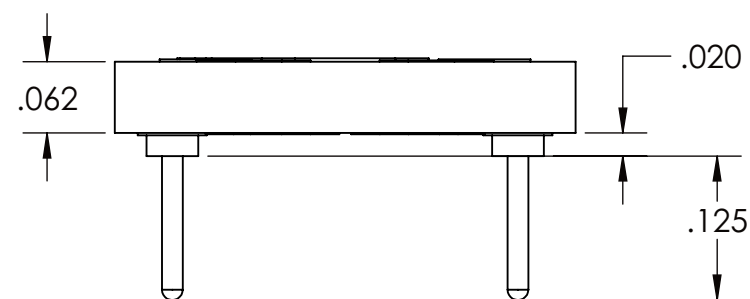
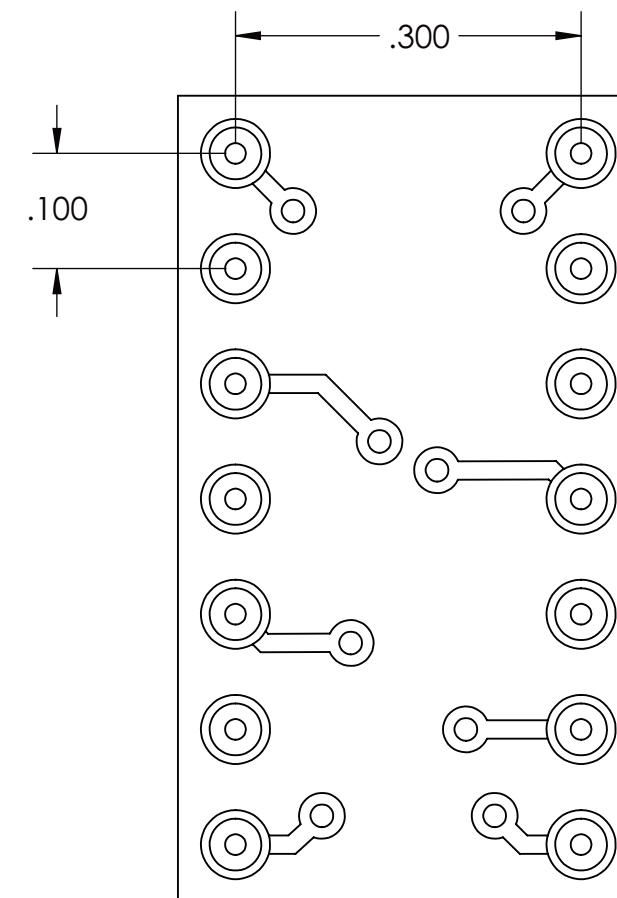
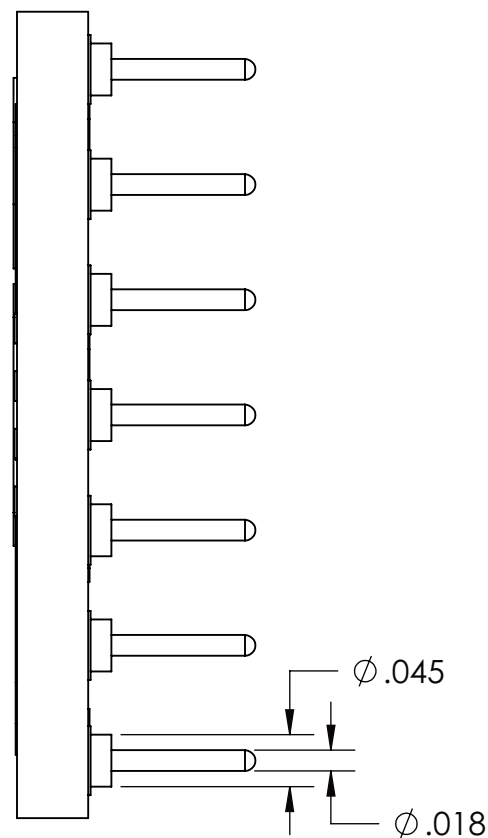
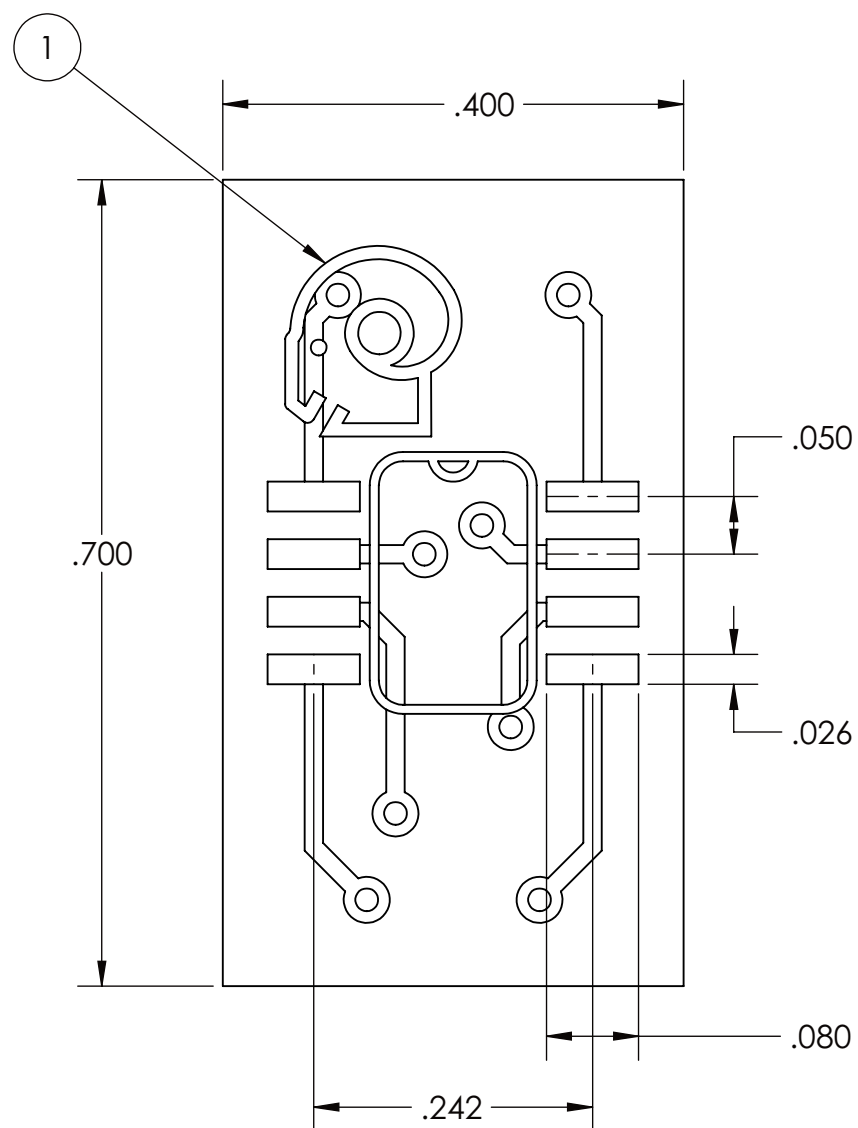


DRAWING NO. 5087-119-18

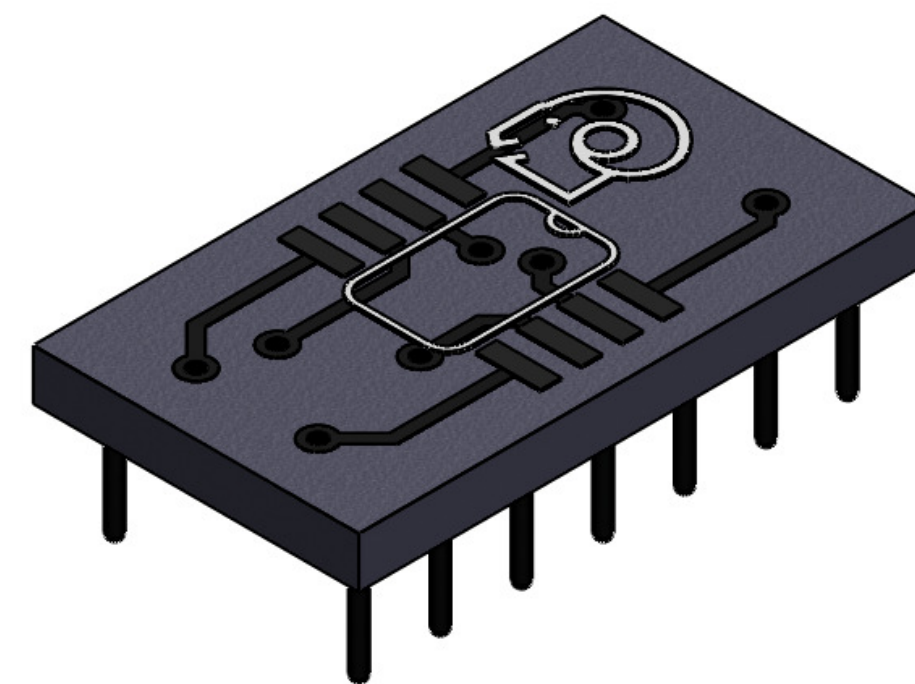
REV	ECN	DATE	APPVD
1	FINAL	9/14/2011	MJS



NOTE:

- PIN 1 INDICATOR
- SOLDERMASK COLOR : BLACK
- THIS PRODUCT IS NOT RoHS COMPLIANT
- SOLDER PER J-STD-001
- BOARD MATERIAL : FR4 .062" THICK PER IPC4101A/26 WITH 1 OZ CU TRACES BOTH SIDES WITH HASL FINISH (Sn/Pb FINISH) ON PADS.
- PIN MATERIAL : BRASS ALLOY 360, 1/2 HARD PER ASTM-B16-00
- PIN PLATING : 200u" MIN/93/7 TIN/LEAD PER MIL-P-81728 OVER 100u" MIN. NICKEL PER QQ-N-290.

SOIC(TOP)	DIP(BOTTOM)
1	1
2	4
3	6
4	7
5	8
6	10
7	12
8	14



INCH [MM] OR INCH [MM]	TOLERANCES UNLESS OTHERWISE SPECIFIED	MATL:	SEE NOTES		
 THIRD ANGLE PROJECTION	0.0	±.010 [0.25]	USED ON:	DES:	
	0.00	±.005 [0.13]	TBD	DRW:	JR 9/14/2011
	0.000	±.002 [0.08]	TOOL NO.	CKD:	MJS 9/14/2011
	ANGLES	± 1°	APP:		



SCALE:	6:1		TITLE:	CAC, 8P SOIC to 14P DIP	
SHEET OF	1	SIZE	DRAWING NO.	REV	
	1	B	5087-119-18	1	