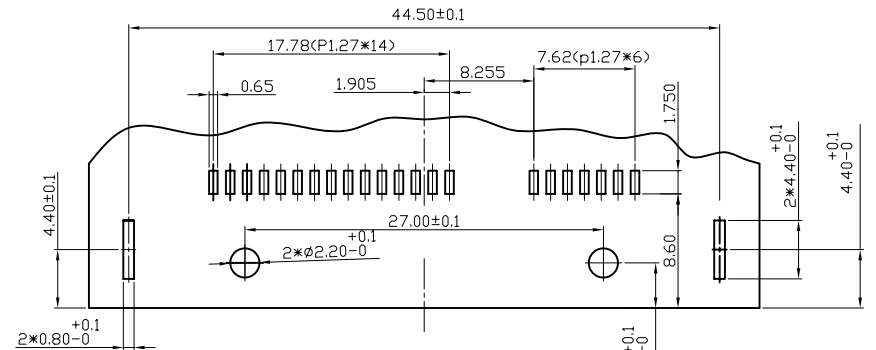
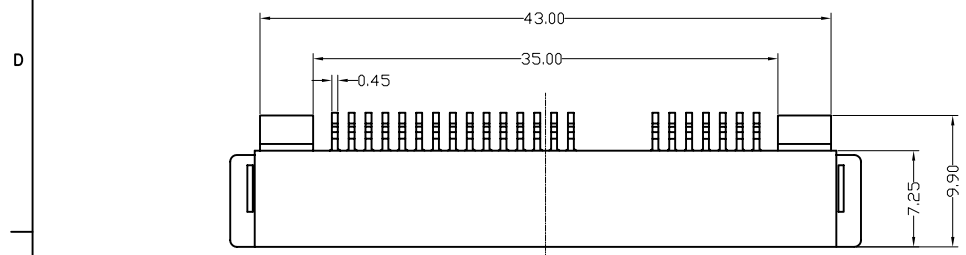


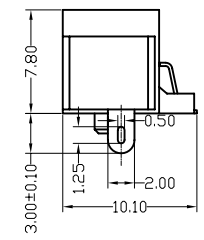
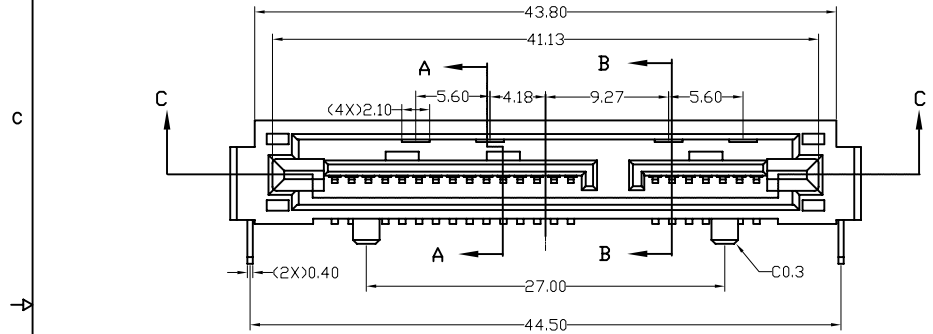
This document is the property of Amphenol Corporation and is delivered on the express condition that it is not to be disclosed, reproduced or used, in whole or in part, for manufacture or sale by anyone other than Amphenol Corporation without the prior consent, it that no right is granted to disclose or to use any information in this document.

Customer Drawing

REVISIONS				
SYM	ECN	DESCRIPTION	DATE	APPROVED
B	HK3854	RELEASE TO PRODUCTION	5/18/06	Michael.IP



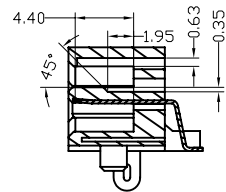
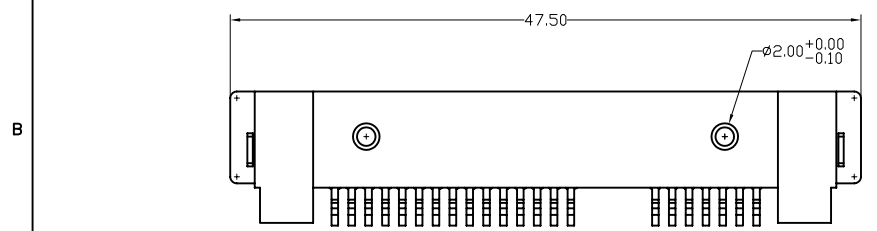
RECOMMENDED PCB LAYOUT
(PC BOARD THICKNESS: 1.60mm±0.10)



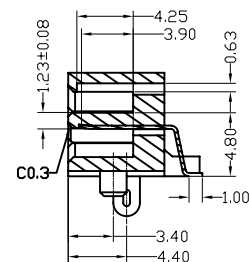
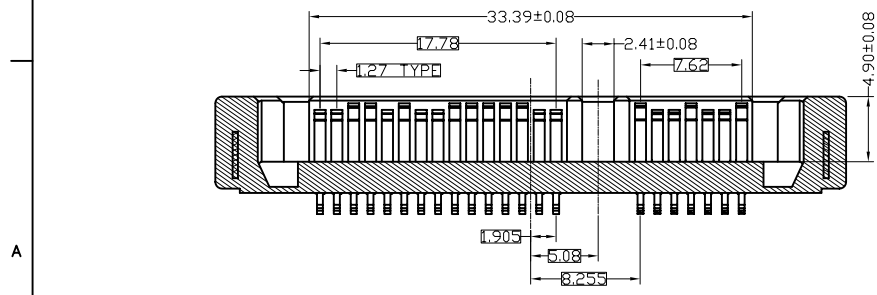
NOTE:

- MATERIAL:**
HOUSING: HIGH TEMPERATURE THERMOPLASTIC MATERIAL, UL 94 V-0, BLACK;
CONTACTS: COPPER ALLOY T=0.25mm;
CONTACT FINISHED: 1.30-2.54um. NICKEL UNDER PLATED ON ENTIRE CONTACT;
SEE NOTES 4 FOR GOLD PLATING ON MATING AREA;
2.54-5.08um MATTE TIN PLATED ON TAIL AREA;
SOLDER TAB: BRASS, t=0.4±0.05mm;
SOLDER TAB FINISHED: 2.54-5.08um PURE MATTE TIN OVER 1.30um MIN. NICKEL;
- SPECIFICATIONS:**
RATED CURRENT: SIGNAL PIN 1.5A MIN
POWER PIN 1.5A MIN
500V FOR 1 MINUTE
DIELECTRIC STRENGTH: 1x10⁹ MΩ
INSULATION RESISTANCE: 1x10⁹ MΩ
TEMPERATURE: -40°C TO +105°C
CONTACT RESISTANCE: 30mΩ MAX
PIN RETENTION FORCE: 0.5Kg MIN. PER PIN.
- PACKAGE: PACKING WITH TRAY.**
- ORDERING INFORMATION:**
SATA - 001 - 0225 - X

GOLD PLATING ON MATING AREA:
1: 0.76 um MIN.
2: 0.38 um MIN.
3: GOLD FLASH



SECTION A-A



SECTION B-B

SECTION C-C

UNLESS OTHERWISE SPECIFIED TOLERANCES U.S. METRIC .X +/- 0.3 .XX +/- 0.15 .XXX +/- 0.15 FRACTIONS +/- 1/16" ANGLES +/- 2° FOR MATERIALS AND FINISHES SEE NOTES REMOVE SHARP EDGES DIMENSIONS U.S. INCHES (METRIC) (MM)	APPROVAL DRAWN: Maya.Lu CHECKED: Michael.IP CHECKED:	DATE 5/18/06 5/18/06	<h2>Amphenol</h2>		
	DRAWING FILE : \DRAWING\SATA\CSATA0010225X.DWG			TITLE 15+7PIN SATA PLUG,SMT TYPE	
	ANGLE OF PROJECTION 			SIZE A3C	DRAWING NO. SATA-001-0225-X
				SCALE NONE	REV. B
		SHEET 1 OF 1			