

FS1-S02-1XXX

MOUNTING SCREW OPTION

- 1 = 8 mm MOUNTING SCREW SHIPPED BULK IN SAME TRAYS WITH CAGE ASSEMBLIES
- 2 = NO MOUNTING SCREW SUPPLIED
- 3 = 10 mm MOUNTING SCREW WITH LOCK WASHER SHIPPED BULK IN SAME TRAYS WITH CAGE ASSEMBLIES

GASKET OPTION

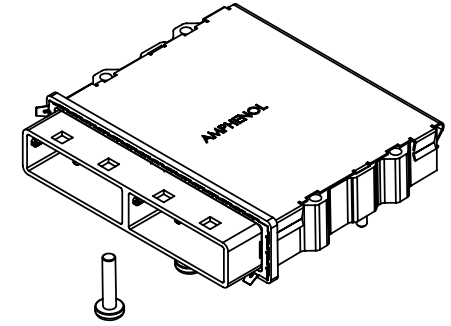
- E = STAINLESS STEEL EMI GASKET
- F = FOAM, CHOMERICS SOFT SHIELD 4800, EMI GASKET

KEYING OPTION (SEE BELOW TABLE FOR FURTHER CLARIFICATION)

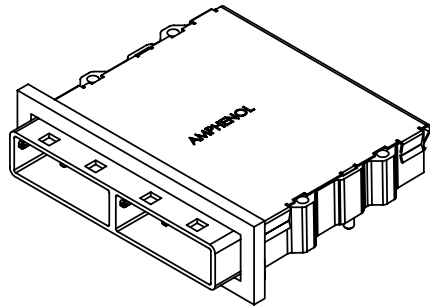
- 0 = NO KEY
- 1 = KEY #1 (IN ALL PORTS)
- 2 = KEY #2 (IN ALL PORTS)
- 4 = KEY #4 (IN ALL PORTS)
- 6 = KEY #6 (IN ALL PORTS)
- 7 = KEY #7 (IN ALL PORTS)
- D22 = KEY #2 AND #4 (IN ALL PORTS)
- D66 = KEY #4 AND #6 (IN ALL PORTS)
- D26 = KEY #2 AND #4 IN LEFT PORT / KEY #4 AND #6 IN RIGHT PORT
- D62 = KEY #4 AND #6 IN LEFT PORT / KEY #2 AND #4 IN RIGHT PORT

Left Key Option	Right Key Option	Part Number	Description
0	0	FS1-S02-10XX	No Key
1	1	FS1-S02-11XX	SATA 'X' Cable
4	4	FS1-S02-14XX	SAS Universal Port
7	7	FS1-S02-17XX	SATA 'M' Cable
2,4	2,4	FS1-S02-1D22XX	SAS Out Port
4,6	4,6	FS1-S02-1D66XX	SAS In Port
2,4	4,6	FS1-S02-1D26XX	SAS Out/In Port
4,6	2,4	FS1-S02-1D62XX	SAS In/Out Port

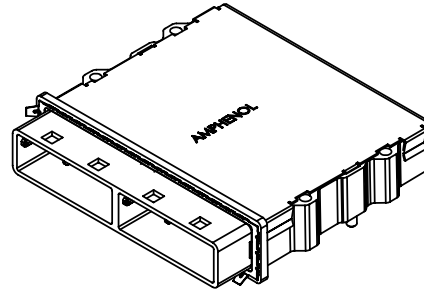
REVISIONS				
REV	ECN	DESCRIPTION	DATE	APPROVED
R		FOAM AND METAL GASKETS DWG'S COMBINED	NOV 7/08	ZLJ



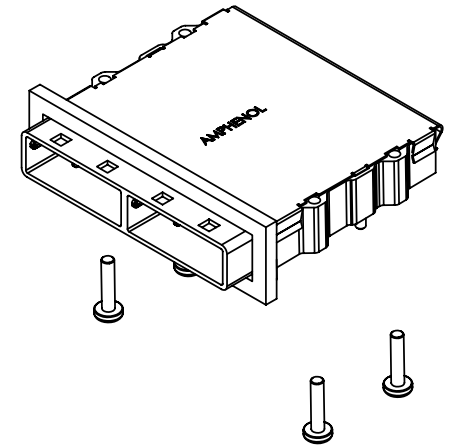
PART NUMBER: **FS1-S02-14E1** SHOWN
(CAGE ASSEMBLY WITH STAINLESS STEEL GASKET AND 8mm MOUNTING SCREWS SHIPPED BULK)



PART NUMBER: **FS1-S02-14F2** SHOWN
(CAGE ASSEMBLY WITH FOAM GASKET WITHOUT MOUNTING SCREWS)



PART NUMBER: **FS1-S02-14E2** SHOWN
(CAGE ASSEMBLY WITH STAINLESS STEEL GASKET WITHOUT MOUNTING SCREWS)



PART NUMBER: **FS1-S02-14F1** SHOWN
(CAGE ASSEMBLY WITH FOAM GASKET AND 8mm MOUNTING SCREWS SHIPPED BULK)

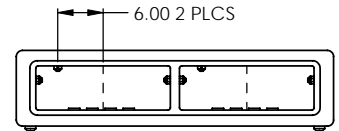


UNLESS OTHERWISE SPECIFIED DIMENSIONS ARE IN MILLIMETERS TOLERANCES ARE:		APPROVALS		DATE		Amphenol Canada Corp.	
DECIMALS	ANGLES	DRAWN	ZLJ	NOV 7/08	TITLE		
X ± 0.25	± 2°	DESIGNED	ZLJ	NOV 7/08	MINI SAS 1 DEGREE 2 PORT CAGE		
XX ± 0.10		CHECKED					
XXX ± 0.05		CAL APP'D					
MATERIAL AND FINISH		E APP'D		SCALE		SHEET	
ENG. REL. NO. EAR 123XX		DWG. NO. 03554		SCALE NTS		SHEET 1 OF 2	
CODE IDENT NO. 03554		DWG APP'D		PROJECT SFF		REV R	

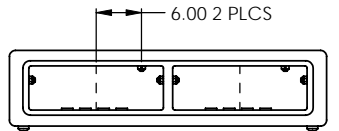
DO NOT SCALE DRAWING

THIS DOCUMENT CONTAINS PROPRIETARY INFORMATION AND SUCH INFORMATION MAY NOT BE DISCLOSED TO OTHERS FOR ANY PURPOSE OR USED FOR MANUFACTURING PURPOSES WITHOUT PERMISSION FROM AMPHENOL CANADA CORP.

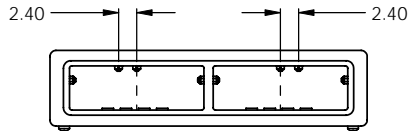
REVISIONS			
REV	ECN	DESCRIPTION	DATE
R		SEE SHEET 1	NOV 1908



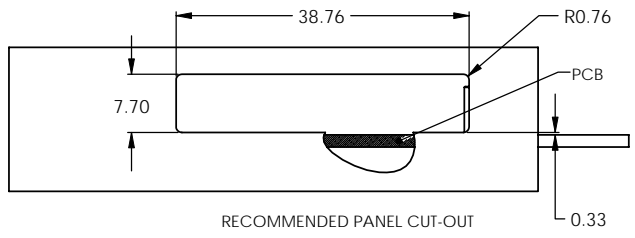
KEY #1-1



KEY #7-7



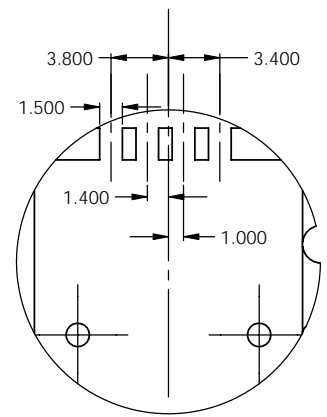
KEY #2, 4 - 4, 6



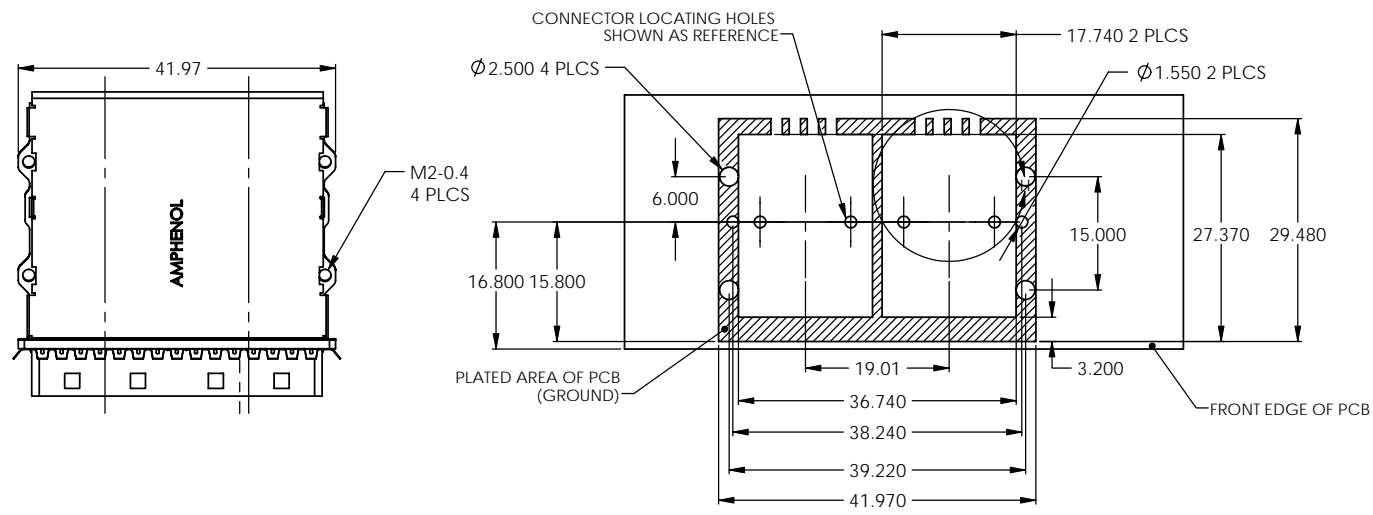
RECOMMENDED PANEL CUT-OUT



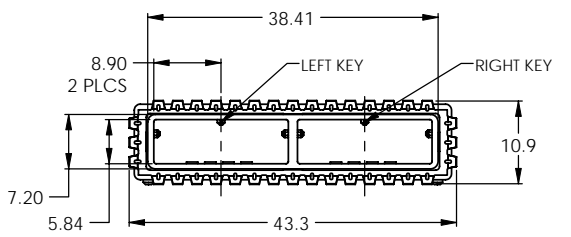
RECOMMENDED FACE PLATE TO LOCATING POST DISTANCE



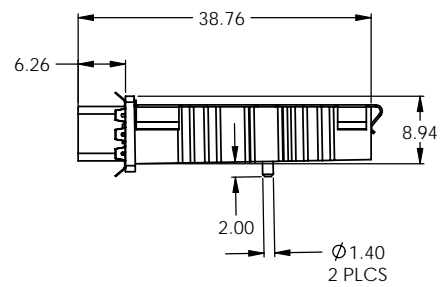
DETAIL H
SCALE 4 : 1



RECOMMENDED PCB LAYOUT



KEY #4-4



DO NOT SCALE DRAWING

NOTES:

1) MATERIAL:

CAGE: ZINC DIECAST SHELL WITH 150 MICROINCHES OF NICKEL PLATING
EMC GASKET: SEE SHEET 1
COVER: STAINLESS STEEL
MOUNTING SCREW: AISI 1010 STEEL

2) ROHS COMPLIANT



APPROVALS		DATE	Amphenol Canada Corp.	
DRAWN	ZLJ	SEP 19/08	TITLE	
DESIGNED	ZLJ	SEP 19/08	MINI SAS 1 DEGREE 2 PORT CAGE	
CHECKED				
DATE				
ENG. REL. NO.	EAR 123XX	SCALE	NTS	PROJECT
CODE IDENT. NO.	03554	DWG. APP'D		SFF
				SHEET
				2 OF 2

THIS DOCUMENT CONTAINS PROPRIETARY INFORMATION AND SUCH INFORMATION MAY NOT BE DISCLOSED TO OTHERS FOR ANY PURPOSE OR USED FOR MANUFACTURING PURPOSES WITHOUT PERMISSION FROM AMPHENOL CANADA CORP.