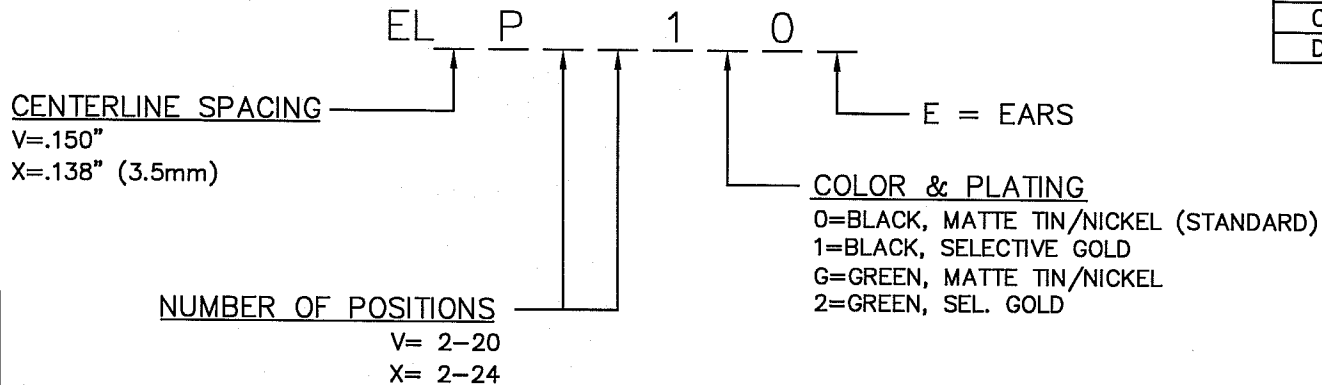


ELV/XP SERIES PART NUMBERING SCHEME

REV	ECN	APPD
-	3624	JEC 1/18/99
A	3865	JEC 11/9/99
B	4661	IQ 11/26/01
C	5742	RN 12/28/05
D	6113	JT 9/17/07



UL RATINGS
CURRENT - 12A
VOLTAGE - 300V
U.L. FILE NO. E83421

SP RATINGS
CURRENT - 12A
VOLTAGE - 300V
CSA FILE NO. LR69703

DIN VDE 0627:1986
DIN VDE 0110-1:1989
EN 60947-1:1991
EN 60947-7-1:1992

CURRENT - 12A
VOLTAGE - 300 V
TUV FILE NO. 20396

CONSULT PCD FOR PART NO. AND AVAILABILITY OF FOLLOWING OPTIONS:
 * CUSTOM COLORS
 * CUSTOM MARKING
 * CUSTOM KEYING
 * SELECTIVE CONTACT LOADING

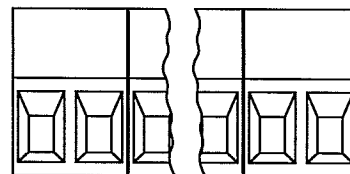
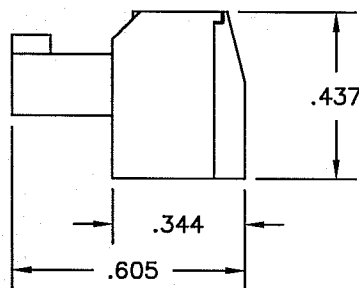
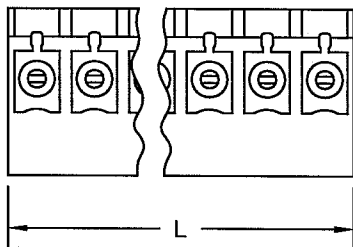
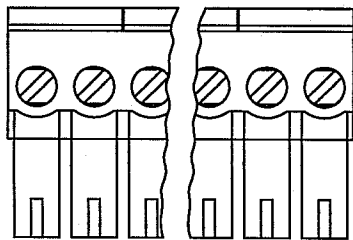
INSTALLATION RECOMMENDATIONS:
 WIRE RANGE: AWG #16-28, STRANDED OR SOLID
 WIRE STRIP LENGTH: .250"
 TIGHTENING TORQUE: 2.2 LB-IN.

MATERIALS:
 HOUSING: PA 4/6, UL 94 V-0
 CONTACT: COPPER ALLOY, OPTIONAL FINISH
 SCREW: COPPER ALLOY, NICKEL FINISH
 WIRE CLAMP: COPPER ALLOY, NICKEL FINISH

MAX OPERATING TEMPERATURE: 125°C

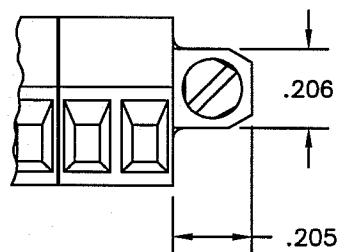
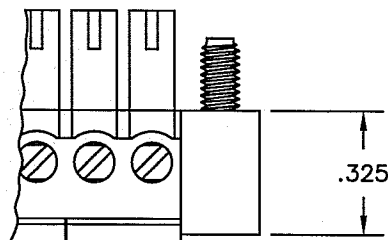
DIMENSIONS ANSI Y14.5M UNITS: INCHES ACAD FILE	TOLERANCES .XX ±.01 .XXX ±.005 ANGLES ±2°	PROJECTION 	Amphenol Pcd SPECIFICATION DRAWING		TITLE ELV/ELX SERIES PLUGGABLE TERMINAL BLOCK, RIGHT ANGLE		
			ENGR I. QUINN 12/21/99				
ORIGINAL STAMPED IN RED	THIS DOCUMENT CONTAINS PROPRIETARY INFORMATION WHICH IS THE CONFIDENTIAL PROPERTY OF AMPHENOL PCD INC. PEABODY, MA		CHKD J. CAHALY 1/18/99	SIZE A	DWG NO. ELVP02100	REV D	
			APPD J. CAHALY 1/18/99	CODE: 58982	SCALE: NONE	SHEET 1 OF 2	

STANDARD R/A PLUG



L=NUM OF POS X CL SPACING

MOUNTING EAR CONFIGURATION



SIZE	DWG NO.	DOC REV
A	ELVP02100	D
CODE: 58982	SCALE: NONE	SHEET 2 OF 2