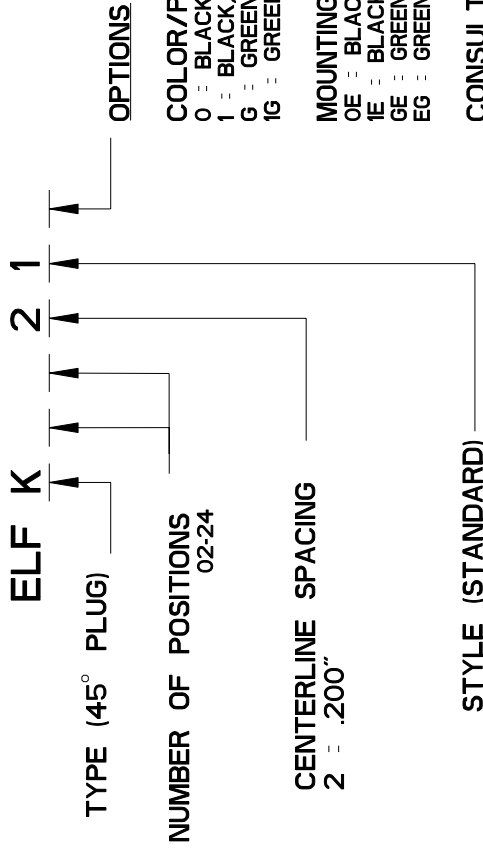


# ELFK SERIES PART NUMBERING SCHEME



- OPTIONS**
- COLOR/PLATING**  
 0 = BLACK, TIN-LEAD (STANDARD)  
 1 = BLACK, SELECTIVE GOLD  
 G = GREEN, TIN-LEAD  
 1G = GREEN, SEL. GOLD
- MOUNTING EARS**  
 OE = BLACK, TIN-LEAD  
 IE = BLACK, SEL. GOLD  
 GE = GREEN, TIN-LEAD  
 EG = GREEN, SEL. GOLD
- CONSULT PCD FOR PART NO. AND AVAILABILITY OF FOLLOWING OPTIONS:**
- CUSTOM COLORS
  - CUSTOM MARKING
  - CUSTOM KEYING
  - SELECTIVE CONTACT LOADING

REV	ECN	APP'D
-	3600	JEC 12/11/98
A	4686	IQ 1/2/02
B	5137	

**RA**  
RATINGS

CURRENT - 15A  
 VOLTAGE - 300V  
 U.L. FILE NO. E83421

**SP**  
RATINGS

CURRENT - PENDING  
 VOLTAGE - PENDING  
 CSA FILE NO. LR69703

DIN VDE 0627:1986  
 DIN VDE 0110-1:1989  
 EN 60947-1:1991  
 EN 60947-7-1:1992

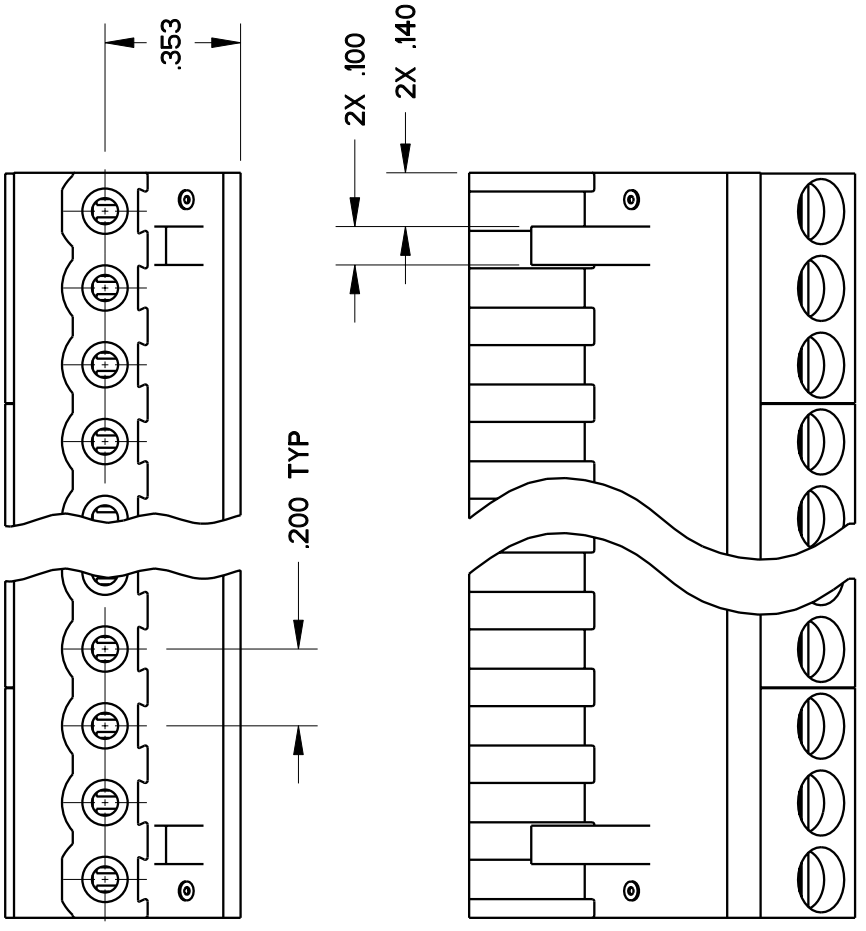
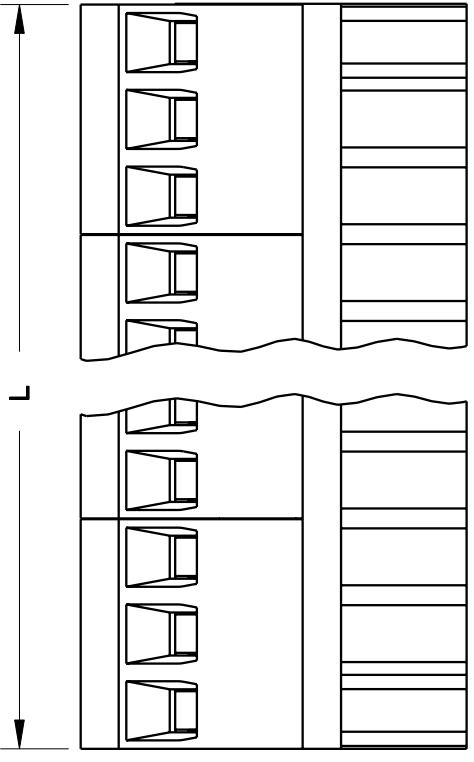
CURRENT - PENDING  
 VOLTAGE - PENDING  
 TUV FILE NO. 20396

**INSTALLATION RECOMMENDATIONS**  
 WIRE RANGE: AWG #14-26, STRANDED  
 OR SOLID; AWG #12 STRANDED  
 WIRE STRIP LENGTH: .310"  
 TIGHTENING TORQUE: 7 LB-IN.

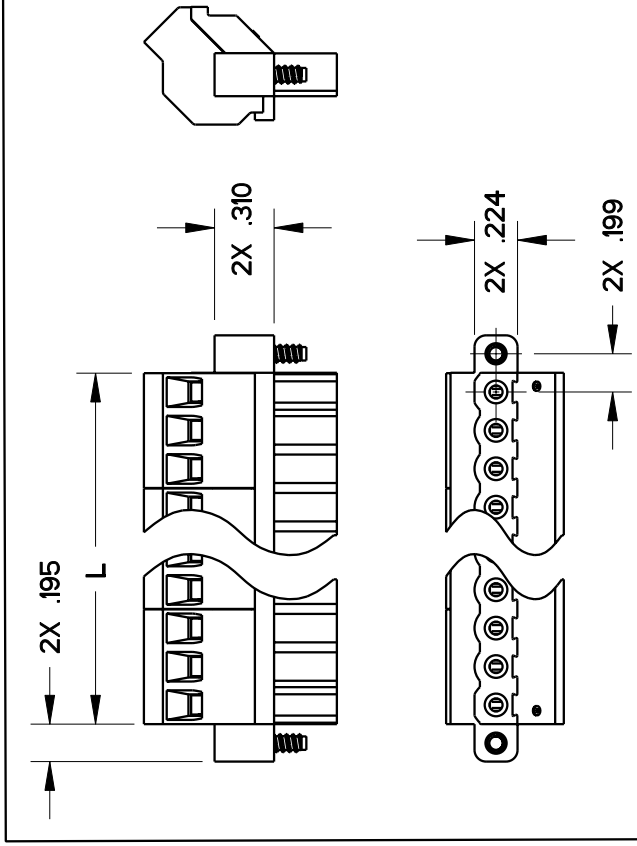
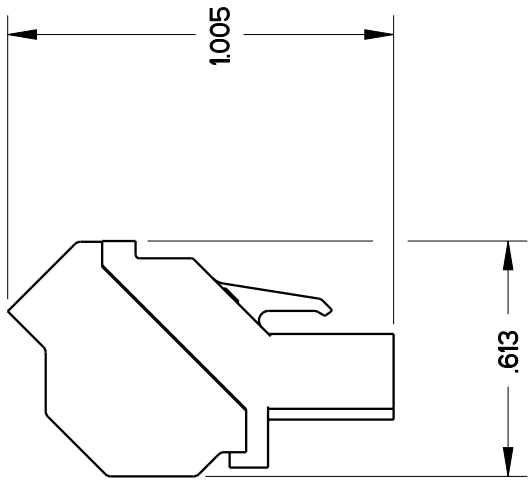
**MATERIALS:**  
 HOUSING: PPO, UL 94 V-0  
 CONTACT: COPPER ALLOY, NICKEL FINISH  
 SCREW: STEEL, NICKEL FINISH  
 WIRE CLAMP: COPPER ALLOY, NICKEL FINISH

**MAX OPERATING TEMPERATURE:**  
 105°C

<b>DIMENSIONS</b> ANSI Y14.5M UNITS: INCHES Pro/E FILE	<b>TOLERANCES</b> .XX ±0.01 .XXX ±0.005 ANGLES ±2.0°	<b>PROJECTION</b> 	<b>SPECIFICATION DRAWING</b>		<b>TITLE</b> ELFK SERIES PLUG ASSEMBLY 45°
			ENGR D. MANTER 10-Dec-98	CHKD	
<b>ORIGINAL STAMPED IN RED</b>	THIS DOCUMENT CONTAINS PROPRIETARY INFORMATION WHICH IS THE CONFIDENTIAL PROPERTY OF PCD, INC. PEABODY, MA, USA			CODE: 58982	SCALE: NONE
			APPD J. CAHALY 12/11/98		SHEET 1 OF 2



L- NUM OF POS X CL SPACING



MOUNTING EARS CONFIGURATION

SIZE  
**A**

DWG NO.

**ELFK02210**

REV  
**B**

CODE: 58982

SCALE: NONE

SHEET 2 OF 2