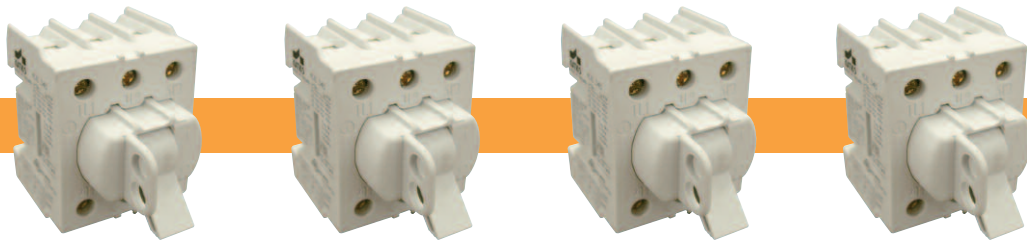


Toggle Handle Motor Disconnect Switch

The KUE series only requires an additional cover plate (see below) which makes the switch IP20 touch proof.



Catalog Number	KUE316	KUE325	KUE340	KUE363
No. of Poles	3	3	3	3
General Purpose Current	16A	25A	40A	60A
Maximum Voltage	600V AC	600V AC	600V AC	600V AC
Motor FLA @ 480V AC	14A	17.5A	28A	34A
Motor FLA @ 600V AC	9A	11A	18A	27A

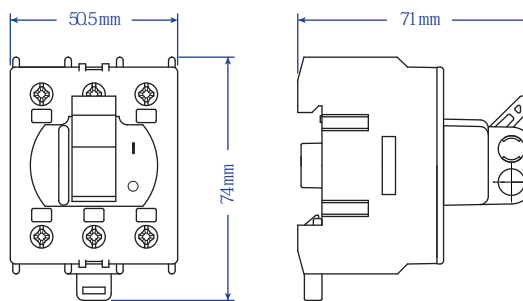
Horsepower Rating /HP	KUE316		KUE325		KUE340		KUE363	
	1 Phase	3 Phase	1 Phase	3 Phase	1 Phase	3 Phase	1 Phase	3 Phase
110-120V AC	3/4	1 1/2	1	2	2	3	3	5
200V AC	2	3	2	5	3	7.5	5	10
208V AC	2	3	2	5	3	7.5	5	10
220-240V AC	2	3	3	7.5	5	10	5	10
265V AC	2	3	3	7.5	5	10	5	10
277V AC	2	3	3	7.5	5	10	7.5	10
380-415V AC	3	7.5	5	10	7.5	15	10	20
440-480V AC	5	10	7.5	15	10	20	15	25
550-600V AC	3	7.5	5	10	7.5	15	15	25

Short Circuit Withstand Rating at 600 V with Max. Fuse Size/Class:	KUE316	KUE325	KUE340	KUE363
K5	50A	50A	50A	60A
RK5	50A	50A	50A	60A (80A @ 480V AC)
RK1	80A	80A	80A	100A
J	80A	80A	80A	100A

Terminal Size Acceptability (Cu Conductors only, 75°C)	KUE316	KUE325	KUE340	KUE363
Terminal Size Acceptability	14-8AWG	14-8AWG	14-8AWG	12-4AWG
Terminal Torque	16 lb. in.	16 lb. in.	16 lb. in.	16 lb. in.

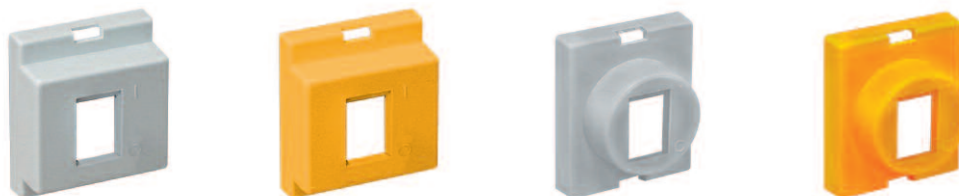
Dimensions

(to convert to inches multiply by 0.03937)



Weight	KUE316	KUE325	KUE340	KUE363
Weight	0.19Kg (0.419lb.)	0.172Kg (0.379lb.)	0.172Kg (0.379lb.)	0.200Kg (0.441lb.)

Suitable Accessories Cover Plate



Cat. No.	K/KUE	K/KUEY	R/KUE	R/KUEY
Color	Grey	Yellow	Grey	Yellow
Shape	Rectangular	Rectangular	Circular	Circular

Dimensions (to convert to inches multiply by 0.03937)

Mouser Electronics

Related Product Links

[845-KUE363 - Altech KUE363](#)