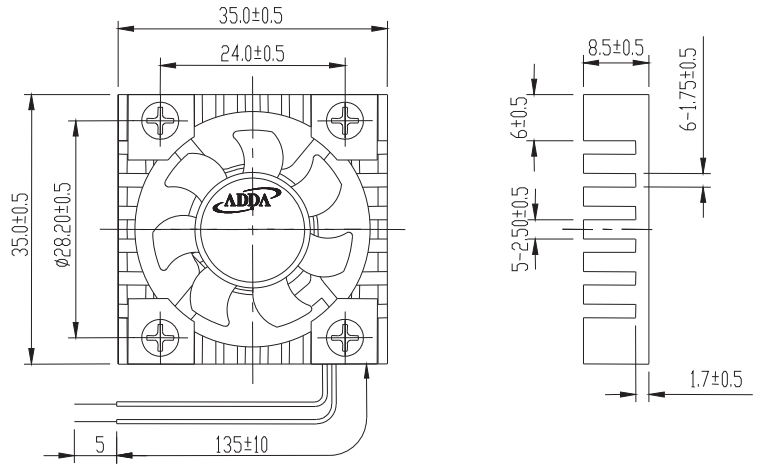
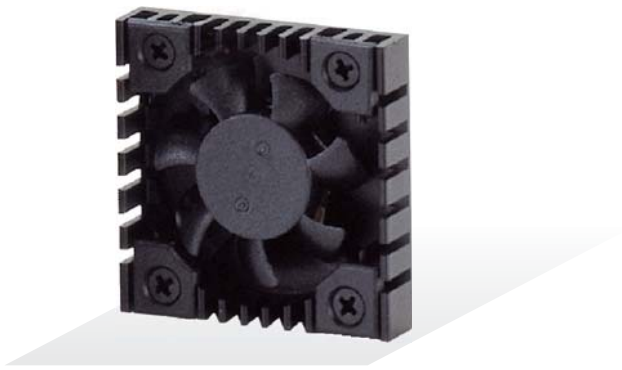




AP3508 SERIES

External Dimensions



Frame: Aluminum alloy
 Impeller: Plastic (UL:94V-0)
 Bearing: 1B1S, Hydro bearing
 Lead wire: UL1571AWG28
 VOLTAGE AVAILABLE: 5V, 12V

Specifications (Nominal)

*Noise is measured at the distance of one (1) meter from the axis of intake.

Bearing type: ○=Ball ※=Sleeve ○=1B1S ●=Hydro bearing

Frame size (mm)	Model No.	Bearing System Type	Rated Voltage (VDC)	Current (A)	Power (W)	Rated Speed (rpm)	Maximum AirFlow (CMM, CFM)		Maximum Pressure (InAq, mmAq)		*Noise Level (dB/A)	Weight (g)
35x35x08	AP3505LB-J70	○●	5	0.06	0.30	7500	0.071	2.50	0.082	2.05	20.0	6.0
	AP3505MB-J70	○●	5	0.11	0.55	9000	0.093	3.30	0.138	3.45	27.9	
	AP3505HB-J70	○●	5	0.11	0.55	10500	0.116	4.10	0.151	3.78	32.0	
	AP3512LB-J70	○●	12	0.05	0.60	7500	0.071	2.50	0.082	2.05	20.0	
	AP3512MB-J70	○●	12	0.05	0.60	9000	0.093	3.30	0.138	3.45	27.9	
	AP3512HB-J70	○●	12	0.08	0.96	10500	0.116	4.10	0.151	3.78	32.0	

Specifications subject to change without notice.

*Motor protective circuit and third lead wire functions

0	1	2	3	4	6	7	8	9	A	B
✓										

*Safety approvals

✓	✓		✓	✓