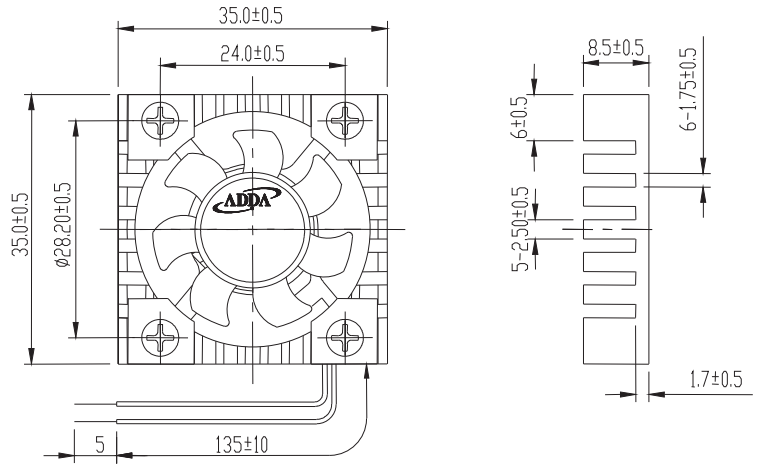
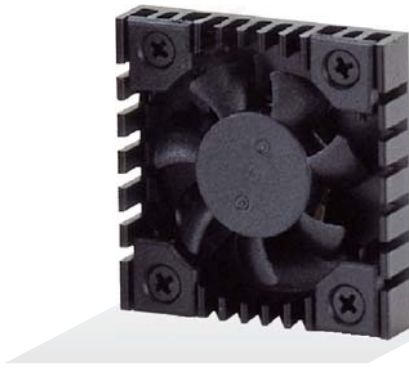




AP3508 SERIES

External Dimensions



Frame: Aluminum alloy
 Impeller: Plastic (UL: 94V-0)
 Lead wire: UL1571AWG28

Specifications (Nominal)

*Noise is measured at the distance of one (1) meter from the axis of intake.

Bearing type: ○=Ball ※=Sleeve ○=1B1S ●=Hypro bearing

Frame size (mm)	Model No.	Bearing System Type	Rated Voltage (VDC)	Current (A)	Power (W)	Rated Speed (rpm)	Maximum AirFlow (CMM)	Maximum AirFlow (CFM)	Maximum Pressure (InAq)	Maximum Pressure (mmAq)	*Noise Level (dB/A)	Weight (g)
35x35x08	AP3505LB-J70	○●	5	0.06	0.30	7500	0.071	2.50	0.082	2.05	20.0	6.0
	AP3505MB-J70	○●	5	0.11	0.55	9000	0.093	3.30	0.138	3.45	27.9	
	AP3505HB-J70	○●	5	0.11	0.55	10500	0.116	4.10	0.151	3.78	32.0	
	AP3512MB-J70	○●	12	0.05	0.60	9000	0.093	3.30	0.138	3.45	27.9	
	AP3512HB-J70	○●	12	0.08	0.96	10500	0.116	4.10	0.151	3.78	32.0	

Specifications subject to change without notice.

*Motor protective circuit and third lead wire functions

0	1	2	3	4	6	7	8	9	A	B
✓										

*Safety approvals

✓	✓		✓	✓