

- Eliminate the use of screws and nuts in assembling the heat sink and transistor.
- Have an internal tab to secure the transistor permanently in place.
- An insulator and insulating cover may be used with a clip with 3mm standoff to meet V.D.E. specifications.

**To order:**

Add the three character suffix after the model number.  
For example:

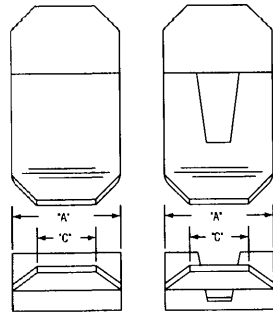
7022B - TC4 - MT  
 a = Model Number  
 b = Thermalclip  
 c = Mounting Tab



**THERMALCLIPS**

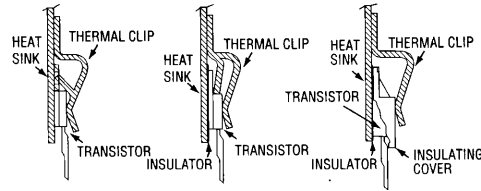
**PRODUCTIVITY ENHANCEMENTS**

**CLIP CONFIGURATIONS**



▲ TC12      ▲ TC10, -TC11

▼ **FIGURE 1** Locking Clip      ▼ **FIGURE 2** Insulating Clip\*\*      ▼ **FIGURE 3** V.D.E. Clip

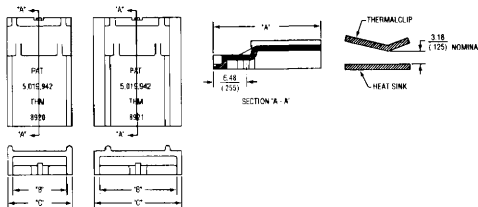


\*\*This clip can be used with or without an insulator.

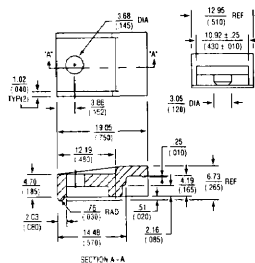
U.S. Patent No. 4,729,426  
 U.S. Patent No. 2,187,886

**INSULATING COVERS**

- Isolate the device to reduce the possibility of arcing.
- May be used with insulators if desired.
- The 8920 and 8921 covers are designed to be used with Thermalclips.



▲      ▲



▲ **FIGURE 4/V.D.E. COVERS**

8920 and 8921  
 U.S. Patent No. 5,019,942

THERMALCLIP AND COVER SPECIFICATIONS					
Suffix No.	Clip/Cover Features	Fig.	Transistor Case Style	Dimensions	
				A	B      C
-TC10	Locking	1	TO-220, TO-218	10.16 (.400)	—      — (.250)
-TC11	Insulated	2	TO-220	10.16 (.400)	—      — (.250)
-TC12	V.D.E.	3	TO-218, TO-220	10.16 (.400)	—      — (.250)
8920 Cover	V.D.E.	4	TO-220	21.21 (.835)	10.67 (.420)      12.70 (.500)
8921 Cover	V.D.E.	4	TO-218	22.99 (.905)	16.51 (.650)      18.54 (.730)

**Note:** Insulating covers, made of 33% glass-reinforced nylon 6/6 rated 94 V-0, are used with Thermalclip -TC12 to provide insulation to meet V.D.E. requirements. The covers also meet U.L. 90 V-0. Covers are ordered separately.

HEAT SINKS AVAILABLE FOR THERMALCLIP		
Heat Sink Part Number	Clip Option Suffix Number For TO-220	Clip Option Suffix Number For TO-218
6025B (and D, B-TT)	-TC10, -TC11	
6032B (and D, B-TT)	-TC12	
6072B-MT*	-TC10, -TC11, -TC12	
6099B*, 6100B*	-TC10, -TC11	
6106B-MT	-TC12	
6106B-14-MT	-TC12	
6232B-MT	-TC12	
6298B, 6299B, 6300B	-TC10, -TC11	-TC10, -TC11
6398B, 6399B, 6400B	-TC12	-TC12
7020B-MT*	-TC10, -TC11, -TC12	-TC10, -TC11
7021B-MT*	-TC10, -TC11, -TC12	-TC10, -TC11
7022B-MT	-TC12	
7023B-MT	-TC12	
7024B-MT	-TC12	-TC12

\*Parts marked with an asterisk will not have mounting holes or transistor cut-outs as in the standard heat sinks.