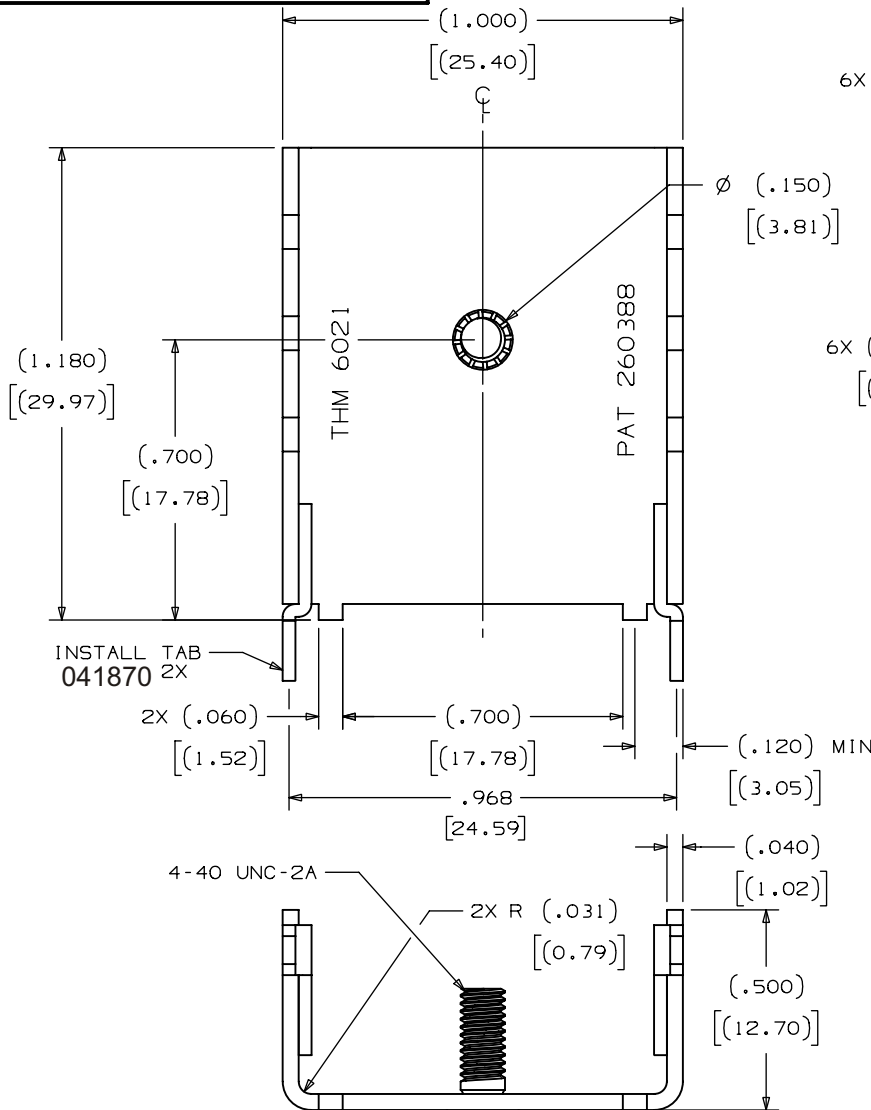
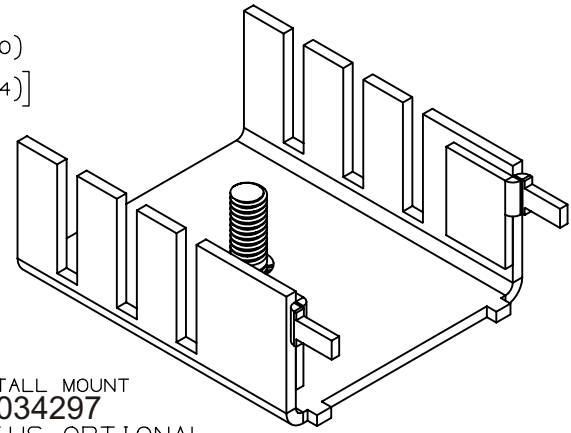
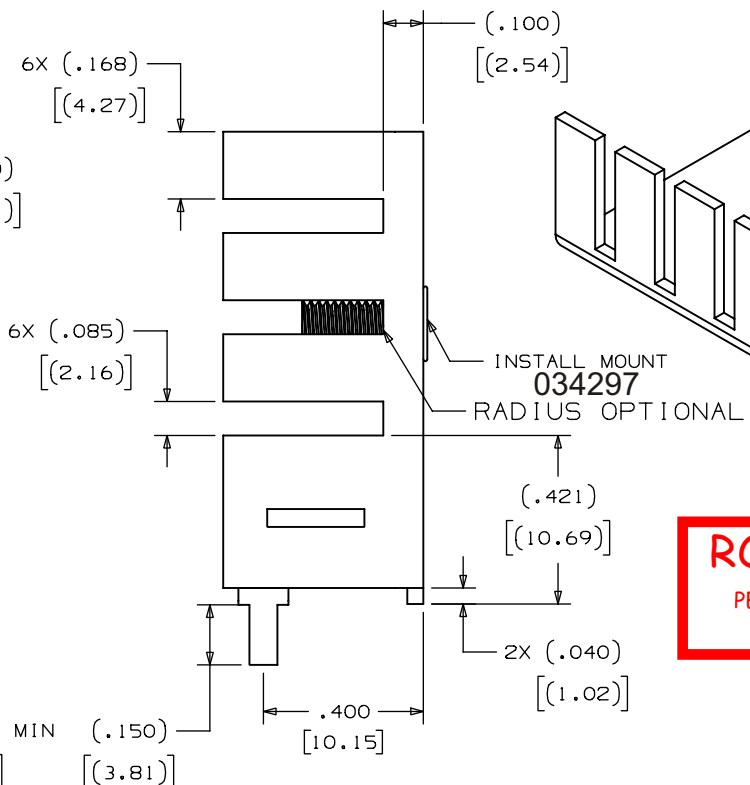


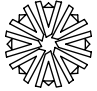
THIS DRAWING AND THE SPECIFICATIONS CONTAINED HEREIN ARE CONFIDENTIAL AND PROPRIETARY. THEY ARE THE PROPERTY OF AAVID THERMAL TECHNOLOGIES INC. AND SHALL NOT BE REPRODUCED OR COPIED OR USED IN WHOLE OR IN PART AS THE BASIS FOR THE MANUFACTURE OR SALE OF ITEMS WITHOUT WRITTEN PERMISSION. THIS IS AN UNPUBLISHED WORK PROTECTED UNDER THE FEDERAL COPYRIGHT LAWS, 1995



NOTES:
 1. TABS MUST WITHSTAND 8 lb LOAD AT 90° WITHOUT BECOMING LOOSE OR SEPERATED FROM HEATSINK.



ROHS COMPLIANT
 PER AAVID SPEC: ROHS - 9000

A	06/26/06	RELEASE PER ECN# 002538	G.L.
REV.	DATE	DESCRIPTION	CHK'D
 AAVID THERMALLOY		80 COMMERCIAL ST. CONCORD, N.H. 03301	
		DRAWING NO. 043609	
STANDARD DESCRIPTION THM,6021B-SF1G			
DATE	DRAWN	ENGR.	APP'D
06/23/06	G. LARES	G.L.	
			SHEET

FINISH	SEE TABLE
U/O	
MAT'L	SEE TABLE
TOLERANCE	UNLESS NOTED
.XX	= ±.015 [±.38]
.XXX	= ±.010 [±.25]
ANGULAR	± 3°

043609	THM,6021B-SF1G	BLACK ANODIZE	037611
043610	THM,6021PB-SF1G	PRE-BLACK ANODIZE	034588
VIS #	DESCRIPTION	FINISH	MATERIAL